

CITY OF ANOKA
COUNTY OF ANOKA
SEC. 5, T31N, R24W

EASTVIEW MEADOWS THIRD ADDITION

KNOW ALL PERSONS BY THESE PRESENTS: That STC Homes LLC, a Minnesota limited liability company, owner of the following described property:

Outlot A, EASTVIEW MEADOWS SECOND ADDITION, Anoka County, Minnesota.

Has caused the same to be surveyed and platted as EASTVIEW MEADOWS THIRD ADDITION.

In witness whereof said STC Homes LLC, a Minnesota limited liability company, has caused these presents to be signed by its proper officer this 11th day of December, 2025, on behalf of the company.

STC HOMES LLC

[Signature]
Mark L. Strandlund, as Chief Manager

STATE OF Minnesota
COUNTY OF Anoka

This instrument was acknowledged before me this 11th day of December, 2025 by Mark L. Strandlund, as Chief Manager of STC Homes LLC, a Minnesota limited liability company.

[Signature] (Signature)
Lalae Mack (Print Name)
Notary Public, Anoka County, Minnesota
My Commission Expires January 31, 2027

I James E. Napier do hereby certify that this plat was prepared by me or under my direct supervision; that I am a duly Licensed Land Surveyor in the State of Minnesota; that this plat is a correct representation of the boundary survey; that all mathematical data and labels are correctly designated on this plat; that all monuments depicted on this plat have been, or will be correctly set within one year; that all water boundaries and wet lands, as defined in Minnesota Statutes, Section 505.01, Subd. 3, as of the date of this certificate are shown and labeled on this plat; and all public ways are shown and labeled on this plat.

Dated this 11th day of December, 2025.

[Signature]
James E. Napier, Licensed Land Surveyor
Minnesota License No. 25343

STATE OF MINNESOTA
COUNTY OF Anoka

This instrument was acknowledged before me this 11th day of December, 2025 by James E. Napier.

[Signature] (Signature)
Lalae Mack (Print Name)
Notary Public, Anoka County, Minnesota
My Commission Expires January 31, 2027

CITY COUNCIL, CITY OF ANOKA, MINNESOTA

This plat of EASTVIEW MEADOWS THIRD ADDITION was approved and accepted by the City Council of the City of Anoka, Minnesota at a regular meeting thereof held this 1st day of December, 2025, and said plat is in compliance with the provisions of Minnesota Statutes, Section 505.03, Subd. 2.

CITY COUNCIL, CITY OF ANOKA, MINNESOTA

By [Signature] Mayor By [Signature] Clerk

COUNTY SURVEYOR

I hereby certify that in accordance with Minnesota Statutes, Section 505.021, Subd. 11, this plat has been reviewed and approved this 31st day of December, 2025.

[Signature]
David M. Zieglmeier
Anoka County Surveyor

COUNTY AUDITOR/TREASURER

Pursuant to Minnesota Statutes, Section 505.021, Subd. 9, taxes payable in the year 2025 on the land hereinbefore described have been paid. Also, pursuant to Minnesota Statutes, Section 272.12, there are no delinquent taxes and transfer entered this 31st day of December, 2025.

Pamela J LeBlanc
Property Tax Administrator

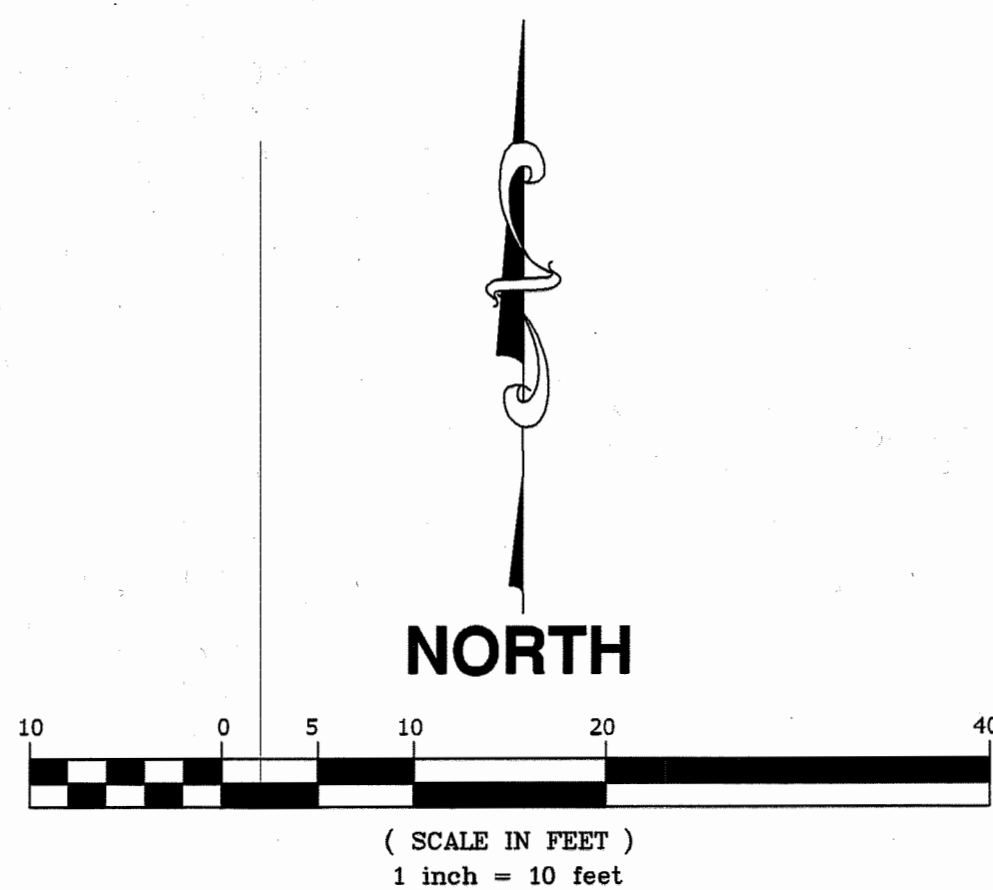
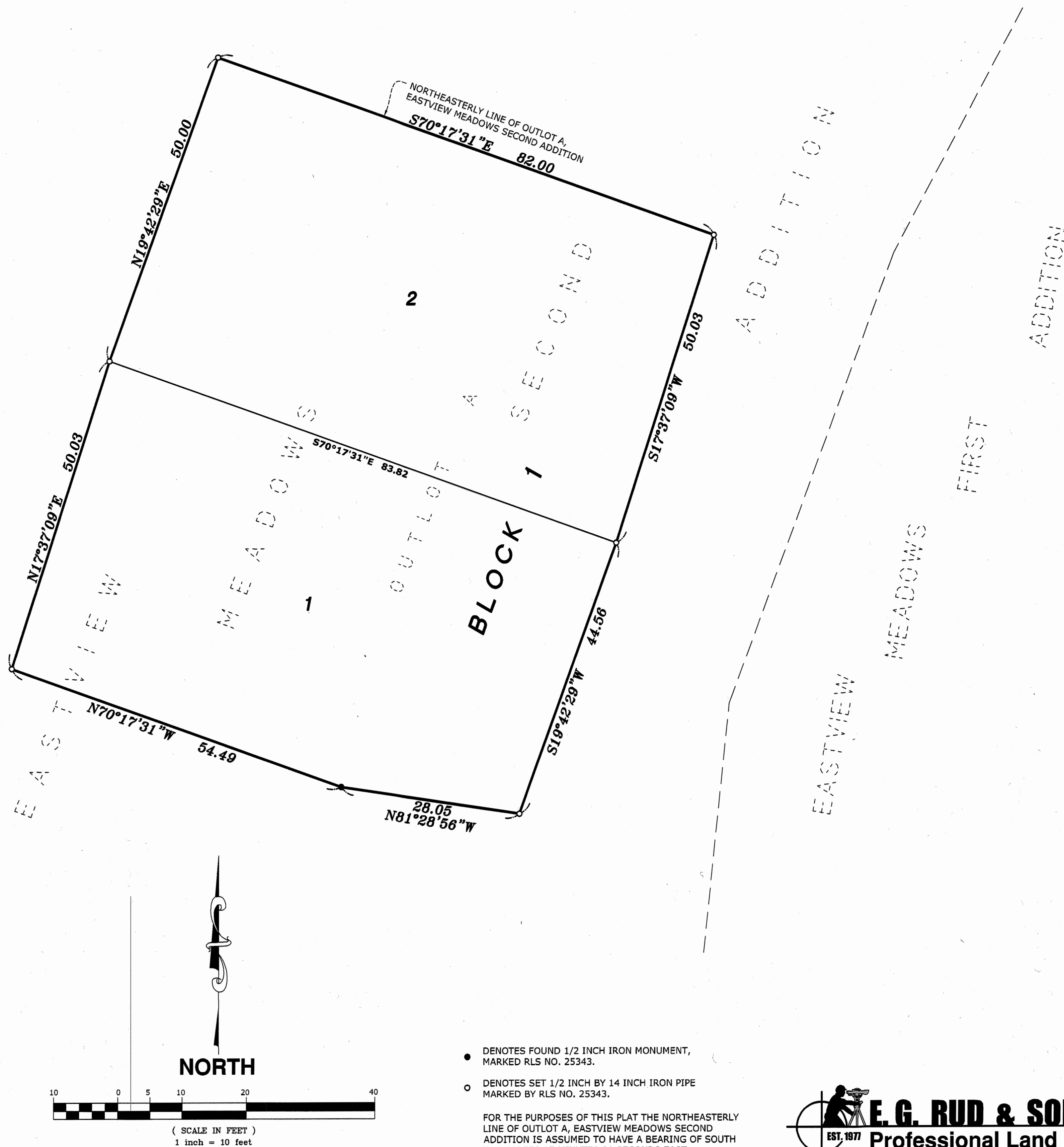
By [Signature], Deputy

COUNTY RECORDER/REGISTRAR OF TITLES
COUNTY OF ANOKA, STATE OF MINNESOTA

I hereby certify that this plat of EASTVIEW MEADOWS THIRD ADDITION was filed in the office of the County Recorder/Registrar of Titles for public record on this 31st day of December, 2025, at 9:43 o'clock A.M. and was duly recorded as Document Number 2456656.001.

Pamela J. LeBlanc
County Recorder/Registrar of Titles

By [Signature], Deputy



- DENOTES FOUND 1/2 INCH IRON MONUMENT, MARKED RLS NO. 25343.
- DENOTES SET 1/2 INCH BY 14 INCH IRON PIPE MARKED BY RLS NO. 25343.

FOR THE PURPOSES OF THIS PLAT THE NORTHEASTERLY LINE OF OUTLOT A, EASTVIEW MEADOWS SECOND ADDITION IS ASSUMED TO HAVE A BEARING OF SOUTH 70 DEGREES 17 MINUTES 31 SECONDS EAST.

\$56.00

E. G. RUD & SONS, INC.
EST. 1977
Professional Land Surveyors