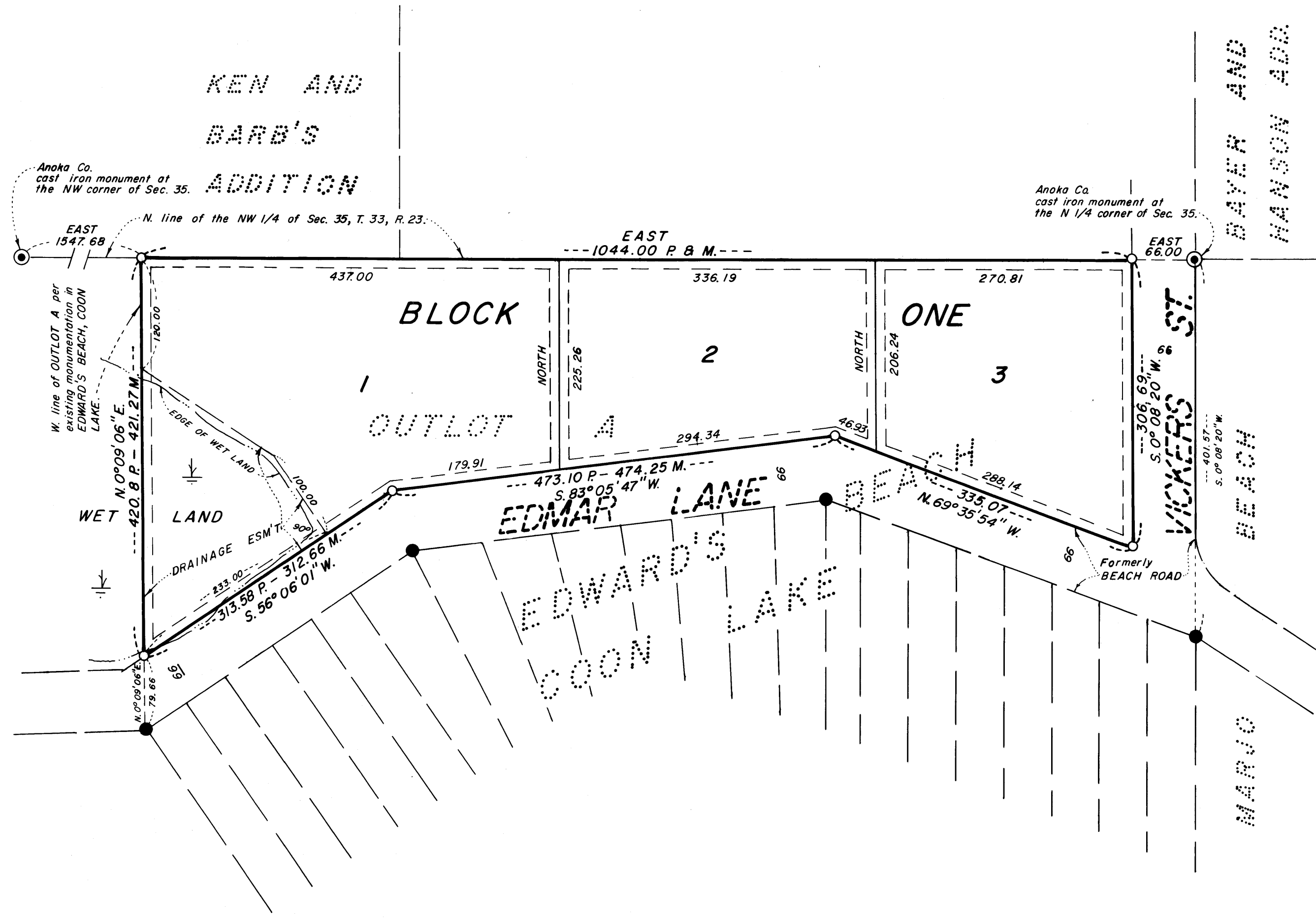


EDWARD'S BEACH SECOND ADDITION

CITY OF EAST BETHEL
COUNTY OF ANOKA



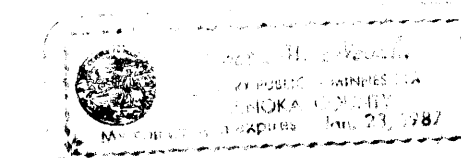
KNOW ALL MEN BY THESE PRESENTS: That Alma Holmstrom, a single person, owner and proprietor of the following described property situated in the County of Anoka, State of Minnesota, to-wit:

Outlot A, EDWARD'S BEACH, COON LAKE, according to the recorded plat thereof, Anoka County, Minnesota.

Has caused the same to be surveyed and platted as EDWARD'S BEACH SECOND ADDITION and do hereby donate and dedicate the drainage and/or utility easements as shown on this plat. In witness whereof, said Alma Holmstrom has hereunto set her hand this 17 day of June, 1985.

SIGNED: Alma Holmstrom
Alma Holmstrom

STATE OF MINNESOTA The foregoing instrument was acknowledged before me this 17 day of June, 1985, by Alma Holmstrom, a single person.
COUNTY OF Anoka



Janet M. Nevala
Notary Public, Anoka County, MN.
My Commission Expires 1-23-87

I hereby certify that I have surveyed and platted the land described in the dedication on this plat as EDWARD'S BEACH SECOND ADDITION; that the plat is a correct representation of said survey; that all distances are correctly shown on said plat in feet and hundredths of a foot; that the monuments have been correctly placed in the ground as shown; that the outside boundaries are correctly designated on said plat; and that there are no wet lands or public highways to be designated on said plat other than as shown thereon.

Jeffrey N. Caine
Registered Land Surveyor, MN. Reg. No. 12251

STATE OF MINNESOTA The surveyor's certificate was acknowledged before me, a Notary Public, this 12th day of June, 1985, by Jeffrey N. Caine, Land Surveyor.
COUNTY OF ANOKA

Nancy S. Caine
Notary Public, Anoka County, Minnesota.
My Commission Expires July 23, 1984

We hereby certify that the City Council of the City of East Bethel, Anoka County, Minnesota, duly accepted and approved the plat of EDWARD'S BEACH SECOND ADDITION at a regular meeting held this 5th day of June, 1985.

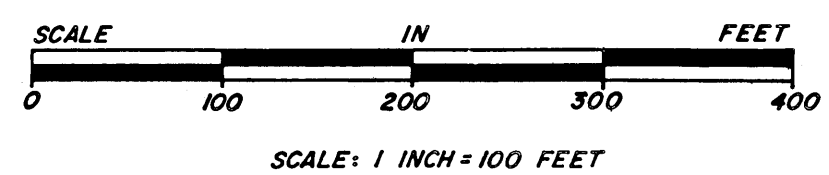
By: Roger Scama Mayor By: Sharon Anderson Clerk

Checked and approved this 16th day of August, 1985.

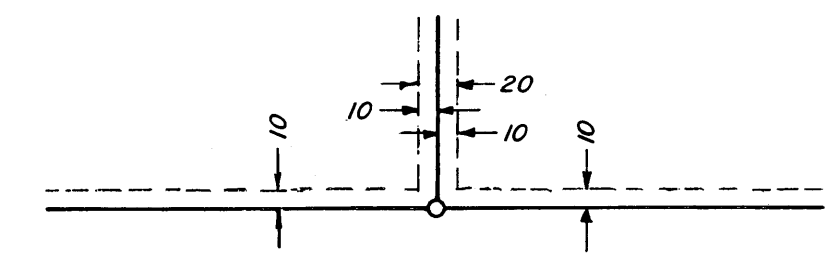
Richard W. Anderson Anoka County Surveyor

- P. DENOTES PLAT DISTANCE
- M. DENOTES MEASURED DISTANCE.
- DENOTES FOUND IRON MONUMENT.
- DENOTES 1/2 INCH IRON PIPE SET.

NOTE:
FOR THE PURPOSES OF THIS PLAT,
THE NORTH LINE OF THE NW 1/4
OF SEC. 35, T. 33, R. 23 IS ASSUMED
TO BEAR EAST.



UNLESS OTHERWISE SHOWN, DRAINAGE AND UTILITY EASEMENTS SHOWN THUS:



CANE & ASSOCIATES
LAND SURVEYORS, INC.

63322
OFFICE OF COUNTY RECORDER
STATE OF MINNESOTA, COUNTY OF ANOKA
I hereby certify that the within instrument was filed in this office for record on the AUG 16 1985 A.D., 1985 at 11:55 o'clock A.M., and was duly recorded in book 35 of Plat, page 30
Paul J. Amdehl
County Recorder
By: V. E. Hilderness

"NO DELINQUENT TAXES AND TRANSFER ENTERED"
Aug 16th 1985
Charles R. Johnson
Auditor, Anoka County
J. R. Lemmick
Deputy

I HEREBY CERTIFY THAT THE TAXES PAYABLE IN THE YEAR 1985 ON THE LANDS DESCRIBED WITHIN ARE PAID
Donald C. Bailey, M. Dwyer
Anoka County Treasurer

