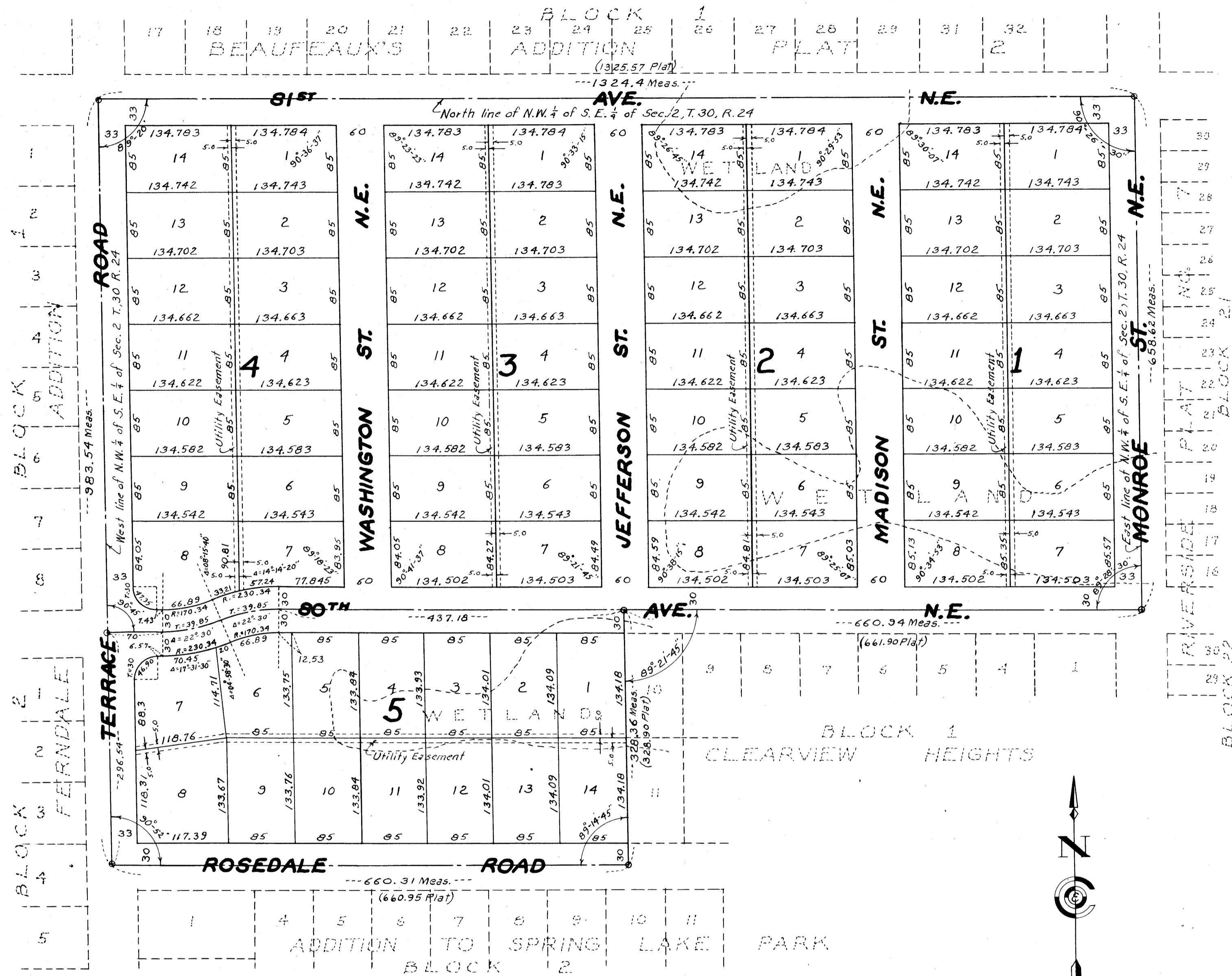


CARTWRIGHT & OLSON
LAND SURVEYORS

DECEMBER 1955

EL RANCHO

VILLAGE OF SPRING LAKE PARK



Know all men by these presents: That we, Dahlmeier Construction Company, a Minnesota Corporation, owners and proprietors of the following described property situate in the County of Anoka, State of Minnesota to-wit: The Northwest Quarter of the Southeast Quarter (N.W. 1/4) of Section Two (2), Township Thirty (30), Range Twenty-four (24), except that part thereof platted as "CLEARVIEW HEIGHTS ADDITION TO SPRING LAKE PARK", according to the plat thereof on file and of record in the office of the Register of Deeds, Anoka County, Minnesota, have caused the same to be surveyed and platted as EL RANCHO and do hereby donate and dedicate to the public for public use forever the Avenues, Streets and Road as shown on the annexed plat, also subject to Utility easements as shown on the annexed plat. In witness whereof we have hereunto set our hands and seals on this 17th day of July A.D. 1956

In the presence of
 Signed
 Dahlmeier Construction Company
 Charles S. Hadley } As to Stanley W. Dahlmeier
 Stanley W. Dahlmeier } President
 Will Allen }
 Charles S. Hadley } As to Francis A. Dahlmeier
 Francis A. Dahlmeier } Secretary - Treasurer
 Will Allen }

STATE OF MINNESOTA
 COUNTY OF
 On this 16th day of July A.D. 1956, before me, a Notary Public within and for said County and State personally appeared Stanley W. Dahlmeier and Francis A. Dahlmeier to me personally known, who being each by me duly sworn, did say that they are the President and Secretary-Treasurer of Dahlmeier Construction Company, the Corporation named in the foregoing instrument, that the seal affixed to said instrument is the Corporate seal of said Corporation, and that said instrument was signed and sealed in behalf of said Corporation by authority of its Board of Directors and said Stanley W. Dahlmeier and Francis A. Dahlmeier acknowledge said instrument to be the free act and deed of said Corporation.

Charles S. Hadley
 Notary Public,
 My Commission Expires Sept. 24, 1957
 CHARLES S. HADLEY, Notary Public, Anoka County, Minn.
 My Commission Expires Sept. 24, 1957

I hereby certify that I have surveyed and platted the land described in the dedication on this plat as EL RANCHO; that this plat is a correct representation of said survey; that all distances are correctly shown on said plat in figures denoting feet and decimals of a foot; that the monuments for the guidance of future surveys have been correctly placed in the ground as shown on said plat; that the topography of the land is correctly shown on said plat; that the outside boundaries of the land are correctly designated on said plat; and that there are no wet lands or public highways to be designated on said plat other than are shown thereon.

Harry C. Cartwright
 Registered Land Surveyor, Minnesota Registration No. 1983

STATE OF MINNESOTA } s.s.
 COUNTY OF HENNEPIN }
 Above certificate subscribed and sworn to before me, a Notary Public within and for said County and State on this 3rd day of February A.D. 1956
 Norman C. Houm
 Notary Public, Hennepin County, Minnesota
 My Commission Expires Oct. 14, 1961

We hereby certify that the Village Council of the Village of Spring Lake Park, Anoka County, Minnesota, duly accepted and approved the annexed plat of EL RANCHO, at a regular meeting thereof held this 17th day of July A.D. 1956
 Mayor Stanley W. Dahlmeier
 Clerk John M. Conde
 Village of Spring Lake Park
 Anoka County, Minnesota

181600
 OFFICE OF REGISTER OF DEEDS
 STATE OF MINNESOTA, COUNTY OF ANOKA } ss
 I hereby certify that the within instrument was filed in this office for record on the 27th day of June, 1957, 11:15 a.m. and was duly recorded in book 22 of Record, page 5.
 Beatrice Johnson
 Register of Deeds
 By Margaret Buswell
 Deputy

TAXES PAID
 This 27th day of June, 1957
 Kenneth W. Campbell
 Auditor, Anoka County, Minn.
 Felix E. Sage
 Deputy

I HEREBY CERTIFY THAT TAXES FOR THE YEAR 1956 ON THE LANDS DESCRIBED HEREIN ARE PAID
 Walter D. Benson
 Deputy
 County Treasurer

SCALE: 1"=100'
 0"=IRON MON.

