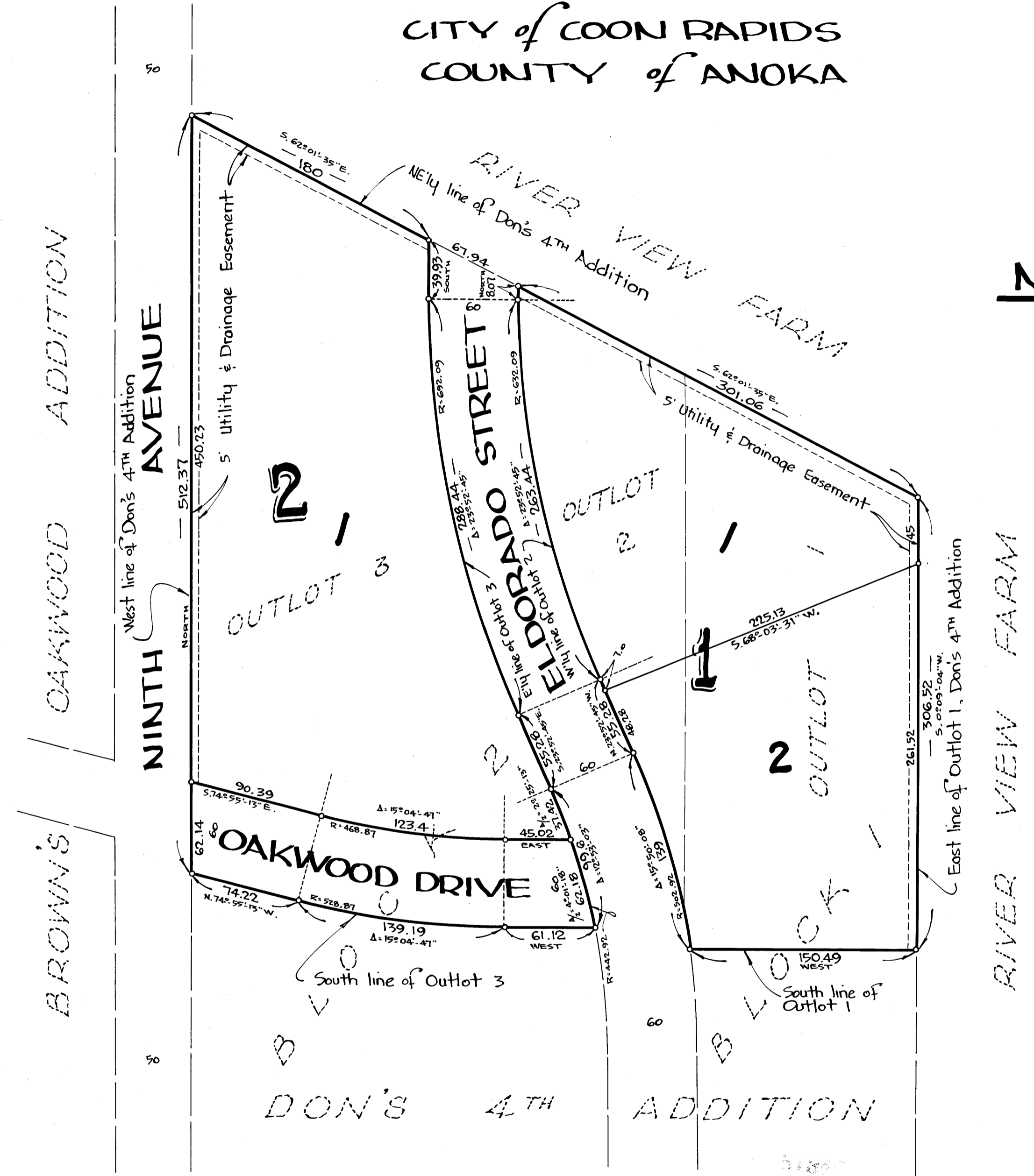


ELDORADO TERRACE

CITY of COON RAPIDS
COUNTY of ANOKA

o Denotes Iron Monument
Bearings shown are assumed
Scale 1" = 60' January, 1965



KNOW ALL MEN BY THESE PRESENTS: that Decem, Inc., a Minnesota Corporation, owner and proprietor of the following described property situate in the State of Minnesota and County of Anoka, to-wit: Outlot 1, Outlot 2 and Outlot 3, Don's 4th Addition; has caused the same to be surveyed and platted as ELDORADO TERRACE; and do hereby donate and dedicate to the public for public use forever the Drive as shown on the annexed plat; subject to Utility and Drainage Easements as shown on the annexed plat; in witness whereof Decem, Inc. has caused these presents to be signed by its proper officers and its corporate seal to be hereunto affixed this 16 day of January A.D. 1965.

In Presence of
 As to Joseph E. Wargo and Peter Tema
 Decem, Inc. President Secretary
 JOANNE M. ORR
 Notary Public, Anoka County, Minn.
 My Commission Expires Jan. 8, 1970

State of Minnesota On this 16 day of January A.D. 1965, before me, a Notary Public within and for said County and State, personally appeared Joseph E. Wargo and Peter Tema, to me personally known, who being by me duly sworn, did say that they are the President and Secretary respectively of Decem, Inc., the corporation named in the foregoing instrument; that the seal affixed to said instrument was signed and sealed in behalf of said corporation by authority of its Board of Directors, and said Joseph E. Wargo and Peter Tema acknowledged said instrument to be the free act and deed of said corporation.

JOANNE M. ORR
 Notary Public, Anoka County, Minn.
 My Commission Expires Jan. 8, 1970

I hereby certify that I have surveyed and platted the property described on this plat as ELDORADO TERRACE; that this plat is a correct representation of said survey; that all distances are correctly shown on the plat in feet and decimals of a foot; that the monuments for guidance of future surveys have been correctly placed in the ground as shown on the plat; that the outside boundary lines are correctly designated on the plat, and that there are no wet lands or public highways to be designated on said plat other than as shown thereon.

E. A. Rattner
 Surveyor - Minnesota Registration No. 3795

State of Minnesota The surveyors certificate subscribed and sworn to before me, a Notary Public, this 15th day of January A.D. 1965.
 Notary Public, Hennepin County, Minnesota
 My Commission Expires

We hereby certify that the City Council of the City of Coon Rapids, Anoka County, Minnesota, duly accepted and approved the annexed plat of ELDORADO TERRACE, at a regular meeting thereof held this 20 day of January A.D. 1965.

CITY OF COON RAPIDS, ANOKA COUNTY, MINNESOTA
 By Joseph A. Gray Its Mayor
 By Norman Peterson Its Clerk

The annexed plat of ELDORADO TERRACE was approved by the Planning and Zoning Commission of the City of Coon Rapids at a regular meeting thereof held this 19th day of November A.D. 1964.

CITY OF COON RAPIDS, ANOKA COUNTY, MINNESOTA
 By Edith G. Pease Its Chairman
 By W. J. McLean Jr. Its Clerk

Checked and approved this 3rd day of May A.D. 1965.

Robert W. Anderson Anoka County Surveyor

Suburban Engineering, Inc.
 Engineers - Surveyors

Office of REGISTRAR OF TITLE
 STATE OF MINNESOTA
 COUNTY OF ANOKA
 I hereby certify that the within instrument was filed in this office on the 18 day of MAY 1965, A. D. 1965, at 5 o'clock P. M. by Ellen Boettcher Deputy Registrar of Title

274460
 OFFICE OF REGISTER OF DEEDS
 STATE OF MINNESOTA, COUNTY OF ANOKA } SS
 I hereby certify that the within instrument was filed in this office for record on the 13 day of MAY 1965, A. D. 1965, at 5 o'clock P. M., and was duly recorded in Book 10 of Platting - 10.
 By Margaret Russell Deputy

TAXES PAID
 This 11 day of May 1965
Kenneth W. Campbell
 Auditor, Anoka County, Minn.
Richard E. Sage deputy

I HEREBY CERTIFY THAT THE TAXES PAYABLE IN THE YEAR 1965 ON THE LANDS DESCRIBED WITHIN ARE PAID.
Richard E. Sage
 Anoka County Treasurer