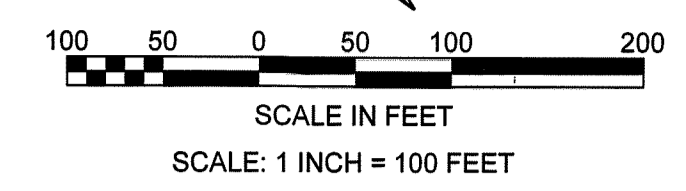


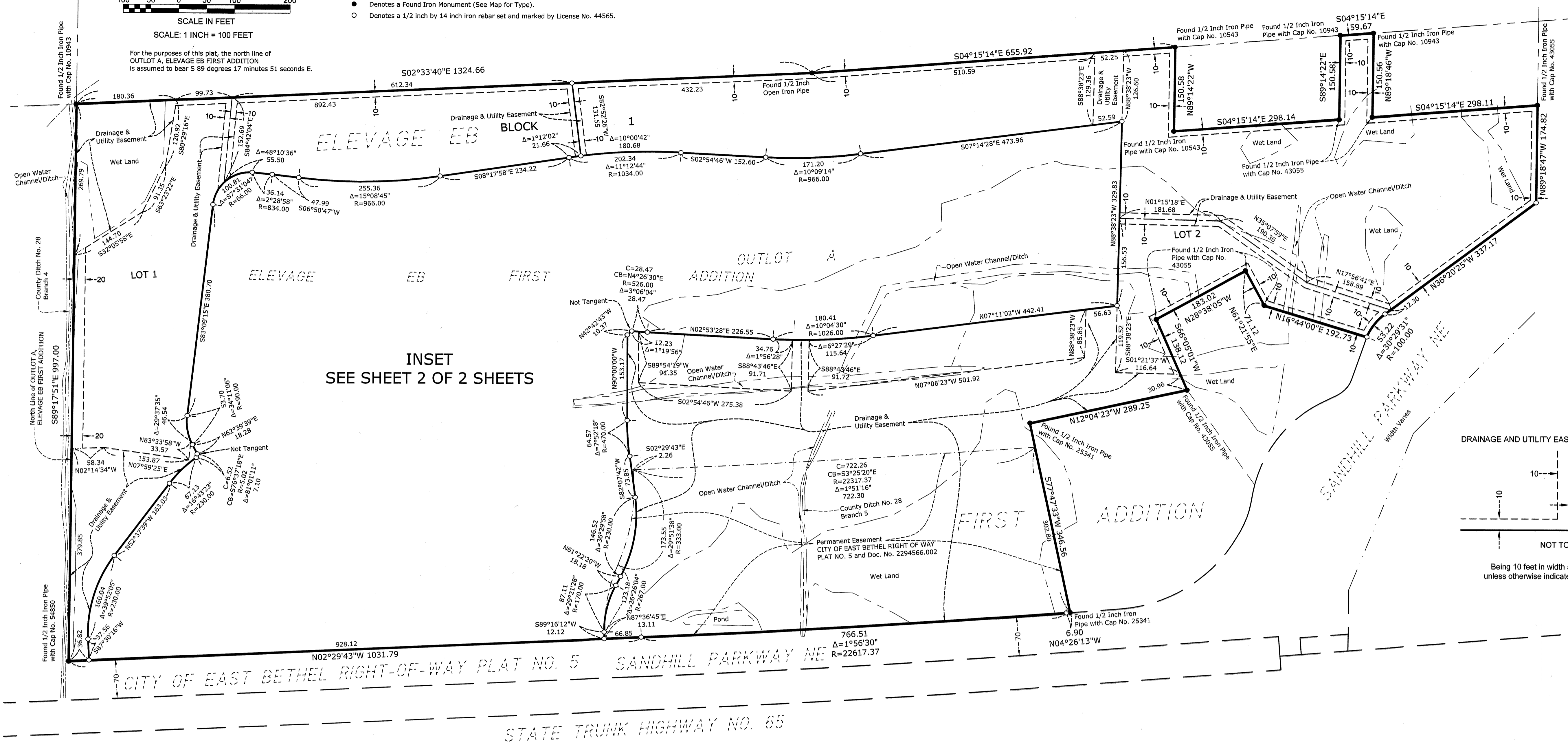
ELEVAGE EB SECOND ADDITION

CITY OF EAST BETHEL
COUNTY OF ANOKA
SECS. 29, 32, T. 33, R. 23

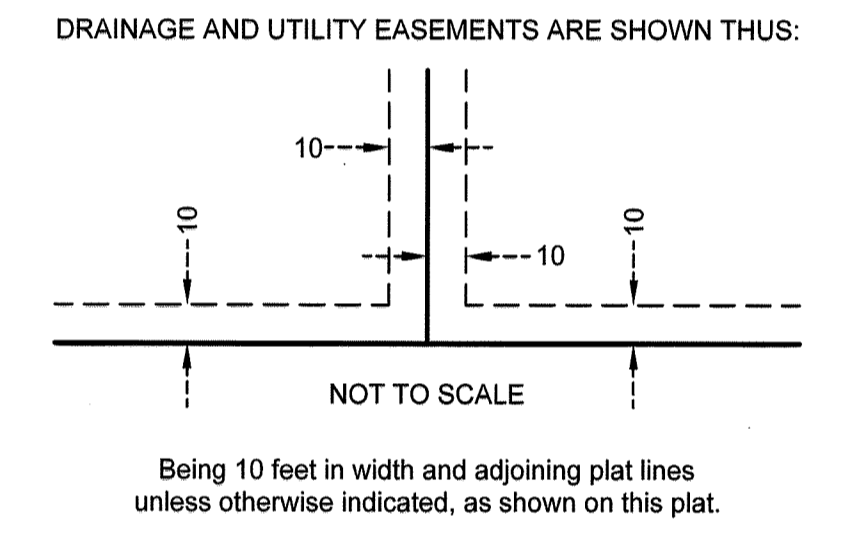


- Denotes a Found Iron Monument (See Map for Type).
- Denotes a 1/2 inch by 14 inch iron rebar set and marked by License No. 44565.

For the purposes of this plat, the north line of OUTLOT A, ELEVAGE EB FIRST ADDITION is assumed to bear S 89 degrees 17 minutes 51 seconds E.



INSET
SEE SHEET 2 OF 2 SHEETS



KNOW ALL PERSONS BY THESE PRESENTS: That Elevage EB Holdings, LLC, a Minnesota limited liability company, owner of the following described property:
OUTLOT A, ELEVAGE EB FIRST ADDITION, Anoka County, Minnesota.

Has caused the same to be surveyed and platted as ELEVAGE EB SECOND ADDITION and does hereby dedicate to the public for public use the public ways and the drainage and utility easements as created by this plat.

In witness whereof said Elevage EB Holdings, LLC, a Minnesota limited liability company, has caused these presents to be signed by its proper officer this 22 day of AUGUST, 2023.

Elevage EB Holdings, LLC
By: [Signature] Its MANAGER

STATE OF MINNESOTA, COUNTY OF ANOKA
This instrument was acknowledged before me this 22 day of AUGUST, 2023, by COREY L. BULSTAD

MANAGER of Elevage EB Holdings, LLC, a Minnesota limited liability company, on behalf of the company.
Wm Collins Notary Public, Signature KELSEY COLLING Notary Public, Printed Name
My Commission Expires: JAN. 31, 2024

Notary Public ANOKA County, MINNESOTA

SURVEYORS CERTIFICATE
I, Rory L. Synstelen do hereby certify that this plat was prepared by me or under my direct supervision; that I am a duly Licensed Land Surveyor in the State of Minnesota; that this plat is a correct representation of the boundary survey; that all mathematical data and labels are correctly designated on this plat; that all monuments depicted on this plat have been, or will be correctly set within one year; that all water boundaries and wet lands, as defined in Minnesota Statutes, Section 505.01, Subd. 3, as of the date of this certificate are shown and labeled on this plat; and all public ways are shown and labeled on this plat.

Dated this 21st day of AUGUST, 2023.
Rory L. Synstelen, Licensed Land Surveyor
Minnesota License No. 44565

STATE OF MINNESOTA, COUNTY OF RAMSEY
This instrument was acknowledged before me this 21st day of AUGUST, 2023 by Rory L. Synstelen.
[Signature] Notary Public, Signature Cody E. Johnson Notary Public, Printed Name
Notary Public RAMSEY County, MINNESOTA
My Commission Expires: January 31, 2027

CITY COUNCIL
City Council, City of East Bethel, Minnesota
This plat of ELEVAGE EB SECOND ADDITION was approved and accepted by the City Council of the City of East Bethel, Minnesota at a regular meeting thereof held this 26th day of December, 2022, and said plat is in compliance with the provisions of Minnesota Statutes, Section 505.03, Subd. 2.
City Council, City of East Bethel, Minnesota
By: [Signature] Mayor Jack Davis Clerk

COUNTY SURVEYOR
I hereby certify that in accordance with Minnesota Statutes, Section 505.021, Subd. 11, this plat has been reviewed and approved this 12th day of September, 2023.

By: David M. Ziegemeier
David M. Ziegemeier
Anoka County Surveyor

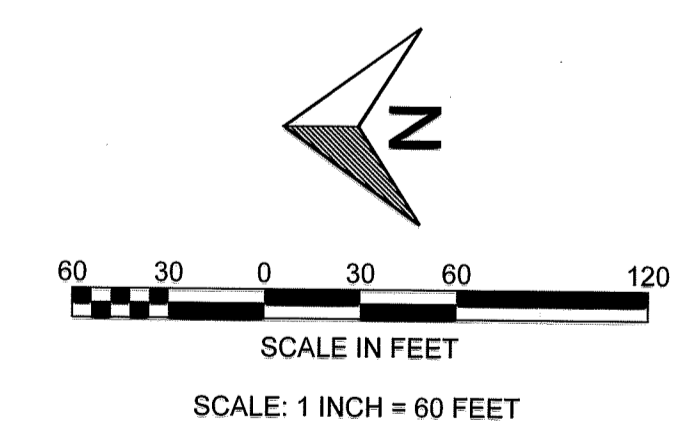
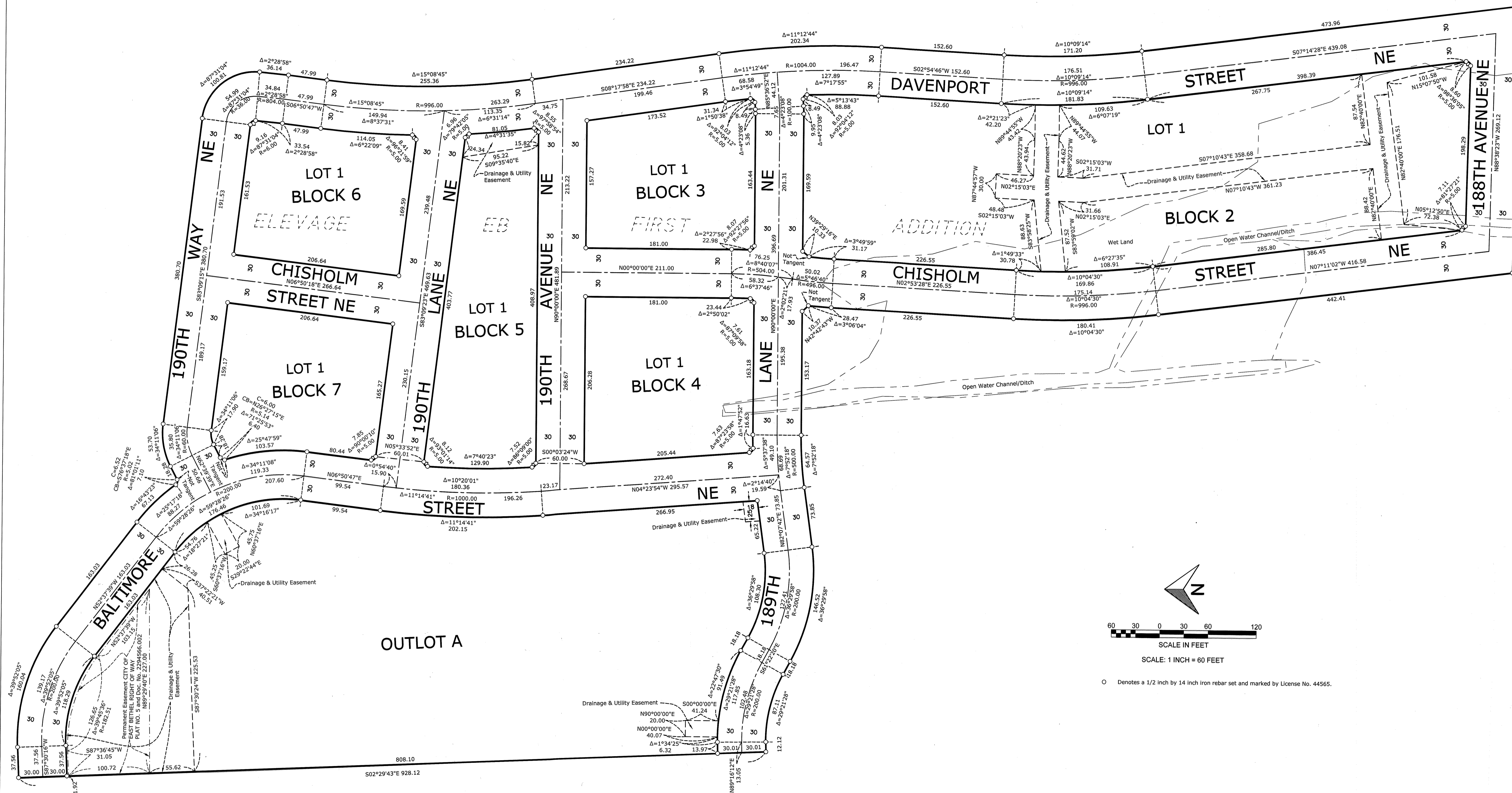
COUNTY AUDITOR/TREASURER
Pursuant to Minnesota Statutes, Section 505.021, Subd. 9, taxes payable in the year 2023 on the land hereinbefore described have been paid. Also, pursuant to Minnesota Statutes, Section 272.12, there are no delinquent taxes and transfer entered this 12 day of September, 2023.

By: Pamela J LeBlanc Property Tax Administrator
By: [Signature] Deputy

COUNTY RECORDER/REGISTRAR OF TITLES
County of Anoka, State of Minnesota
I hereby certify that this plat of ELEVAGE EB SECOND ADDITION was filed in the Office of the County Recorder/Registrar of Titles for public record on this 12 day of September, 2023, at 11:01 o'clock A.M. and was duly recorded as Document Number 2398673.002

By: Pamela J LeBlanc County Recorder/Registrar of Titles
By: [Signature] Deputy

ELEVAGE EB SECOND ADDITION



○ Denotes a 1/2 inch by 14 inch iron rebar set and marked by License No. 44565.