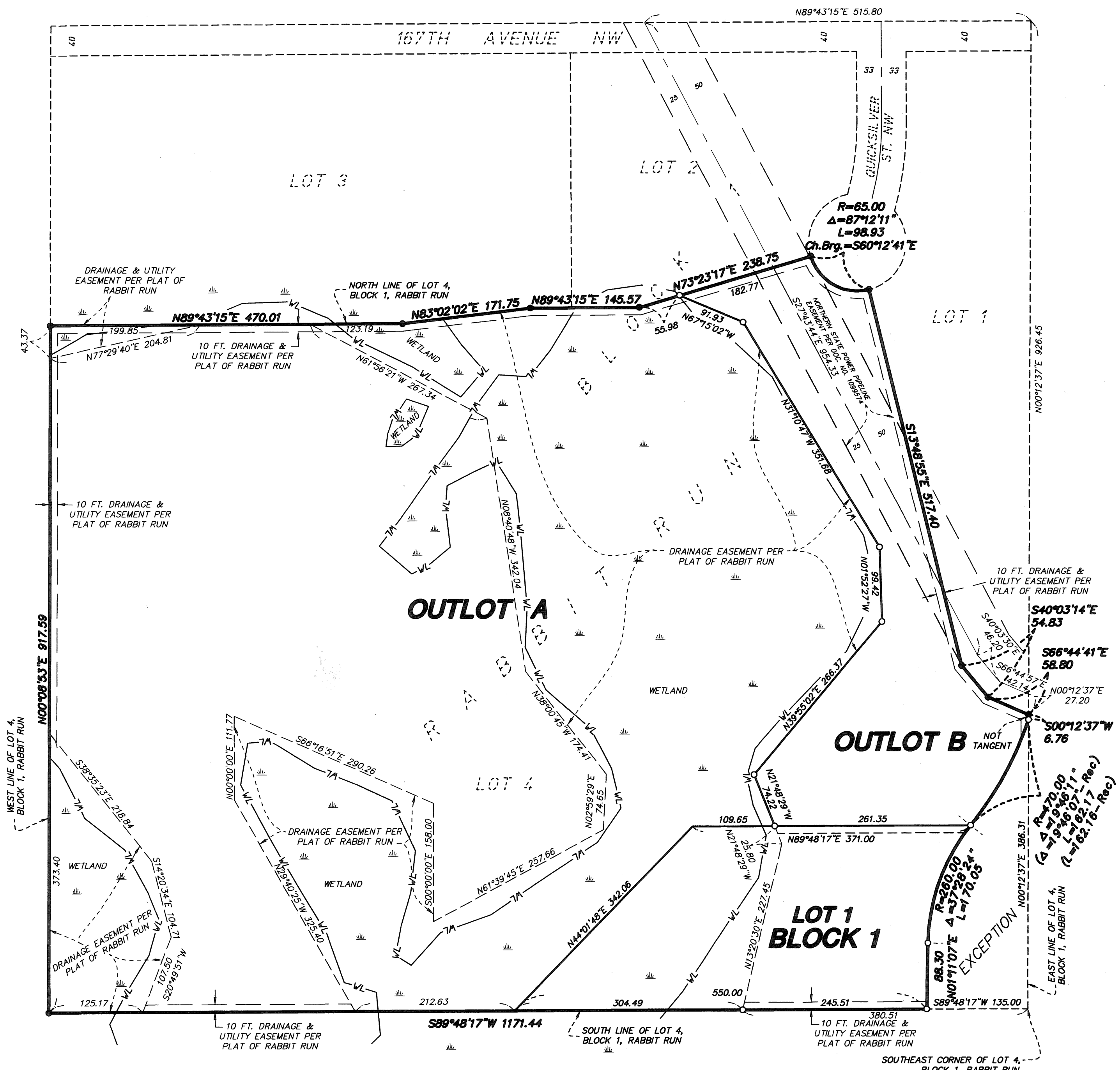
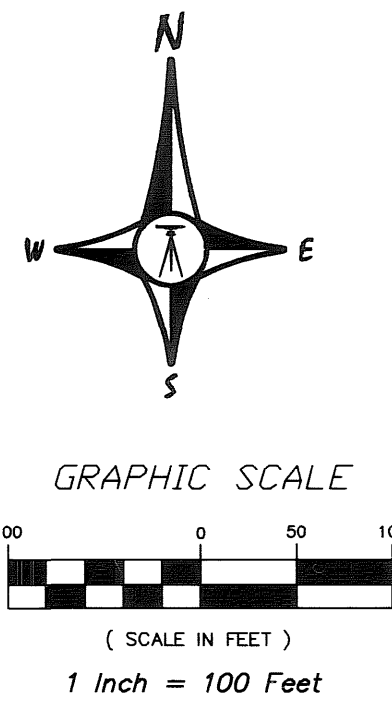


ELMCREST SANCTUARY



KNOW ALL PERSONS BY THESE PRESENTS: That Oakwood Land Development, Inc., a Minnesota corporation, fee owner and 21st Century Bank, a Minnesota corporation, mortgagee of the following described property situated in the County of Anoka, State of Minnesota, to wit:

Lot 4, Block 1, RABBIT RUN, Anoka County, Minnesota EXCEPT that part of Lot 4, Block 1 which lies easterly and southerly of the following described line: Commencing at the southeast corner of Lot 4, Block 1, RABBIT RUN; thence South 89 degrees 48 minutes 17 seconds West, (assumed bearing) along the south line of said Lot 4, a distance of 135.00 feet to the point of beginning of the line to be described; thence North 01 degrees 11 minutes 07 seconds East, a distance of 88.30 feet; thence northeasterly 170.05 feet along a tangential curve, concave to the southeast, having a radius of 260.00 feet and a central angle of 37 degrees 28 minutes 24 seconds; thence 162.16 feet along a reverse curve, concave to the northwest, having a radius of 470.00 feet and a central angle of 19 degrees 46 minutes 07 seconds, to the east line of said Lot 4 and said line there terminating.

Have caused the same to be surveyed and platted as ELMCREST SANCTUARY and do hereby donate and dedicate to the public for public use forever the drainage and utility easements as shown on this plat.

In witness whereof said Oakwood Land Development, Inc., a Minnesota corporation, has caused these presents to be signed by its proper officer this 5 day of August, 2010.
OAKWOOD LAND DEVELOPMENT, INC.

By John R. Peterson, President

State of Minnesota
County of Anoka

This instrument was acknowledged before me this 5 day of August, 2010 by John R. Peterson, as President of Oakwood Land Development, Inc., a Minnesota corporation, on behalf of the corporation.

Rebecca Lazerte
Notary Public, Anoka County, Minnesota
My commission expires January 31, 2015

Notary Public, Anoka County, Minnesota
My commission expires January 31, 2015

Also in witness whereof said 21st Century Bank, a Minnesota corporation, has caused these presents to be signed by its proper officer this 5 day of August, 2010.

21st CENTURY BANK
By Thomas P. Dolphin, Senior, Chief Executive Officer

State of Minnesota
County of Anoka

This instrument was acknowledged before me this 5th day of August, 2010 by Thomas P. Dolphin, Senior, as Chief Executive Officer of 21st Century Bank, a Minnesota corporation, on behalf of the corporation.

James W. Zinberg
Notary Public, Anoka County, Minnesota
My commission expires January 31, 2015

Notary Public, Anoka County, Minnesota
My commission expires January 31, 2015

I Kyle J. Roddy do hereby certify that this plat was prepared by me or under my direct supervision; that I am a duly Licensed Land Surveyor in the State of Minnesota; that this plat is a correct representation of the boundary survey; that all mathematical data and labels are correctly designated on this plat; that all monuments depicted on this plat have been, or will be correctly set within one year; that all water boundaries and wet lands, as defined in Minnesota Statutes, Section 505.01, Subd. 3, as of the date of this certificate are shown and labeled on this plat; and all public ways are shown and labeled on this plat.

Dated this 29th day of June, 2010.

Kyle J. Roddy
Kyle J. Roddy, Licensed Land Surveyor
Minnesota License No. 42627

State of Minnesota
County of Anoka

This instrument was acknowledged before me this 29th day of June, 2010 by Kyle J. Roddy.

Christine S. Hanson
Notary Public, Anoka County, Minnesota
My commission expires January 31, 2015

Notary Public, Anoka County, Minnesota
My commission expires January 31, 2015

CITY COUNCIL
CITY OF RAMSEY, MINNESOTA

This plat of ELMCREST SANCTUARY was approved and accepted by the City Council of the City of Ramsey, Minnesota, at a regular meeting thereof held this 26th day of June, 2010, and said plat is in compliance with the provisions of Minnesota Statutes, Section 505.03, Subdivision 2.

CITY COUNCIL
CITY OF RAMSEY, MINNESOTA

By [Signature] Mayor By [Signature] Clerk

COUNTY SURVEYOR

I hereby certify that in accordance with Minnesota Statutes, Section 505.021, Subd. 11, this plat has been reviewed and approved this 26th day of August, 2010.

By Larry D. Holm, Anoka County Surveyor

BEARING NOTE

For the purposes of this plat, the South line of Lot 4, Block 1, RABBIT RUN, Anoka County, Minnesota, is assumed to bear South 89 degrees 48 minutes 17 seconds West.

LEGEND

- DENOTES FOUND IRON PIPE
- DENOTES SET 1/2" IRON PIPE WITH PLASTIC CAP R.L.S. NO. 42627
- WL— DENOTES EDGE OF WETLAND PER DELINEATION BY KUOLHAUG ENVIRONMENTAL - OCTOBER 21, 2008

NOTE REGARDING WETLANDS

The Minnesota Department of Natural Resources, United States Corps of Engineers and other water management agencies have categorized various wetlands, which are not acknowledged by Chapter 505.01, Subdivision 3 of Minnesota Statutes and may not be shown hereon. Development of lands containing said wetlands may be subject to special conditions or limitations.

I HEREBY CERTIFY THAT THE CURRENT AND DELINQUENT TAXES ON THE LANDS DESCRIBED WITHIN ARE PAID AND THE TRANSFER IS ENTERED
Aug 26 2010
Larry W. Dalien
PROPERTY TAX ADMINISTRATOR
By [Signature]
DEPUTY PROPERTY TAX ADMINISTRATOR

2017082.001
OFFICE OF COUNTY RECORDER
STATE OF MINNESOTA, COUNTY OF ANOKA
I hereby certify that the within instrument was filed in this office for record on the 26th August A.D., 2010 at 9:20 o'clock A.M., and was duly recorded in book 25 ABST. page 31
Larry W. Dalien
County Recorder
By [Signature] Deputy