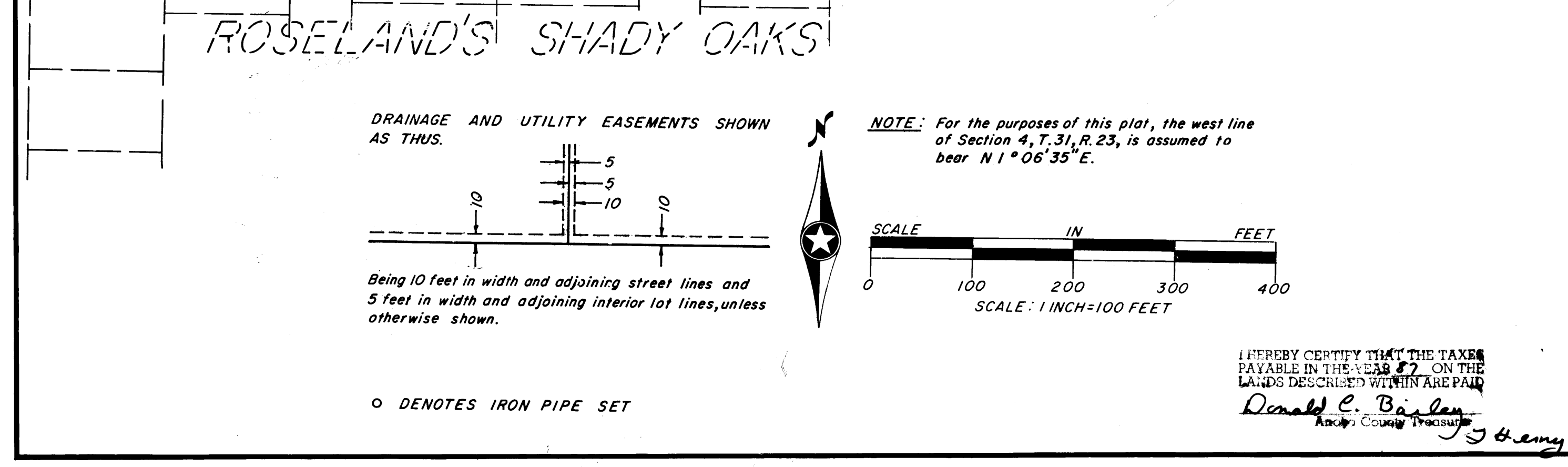
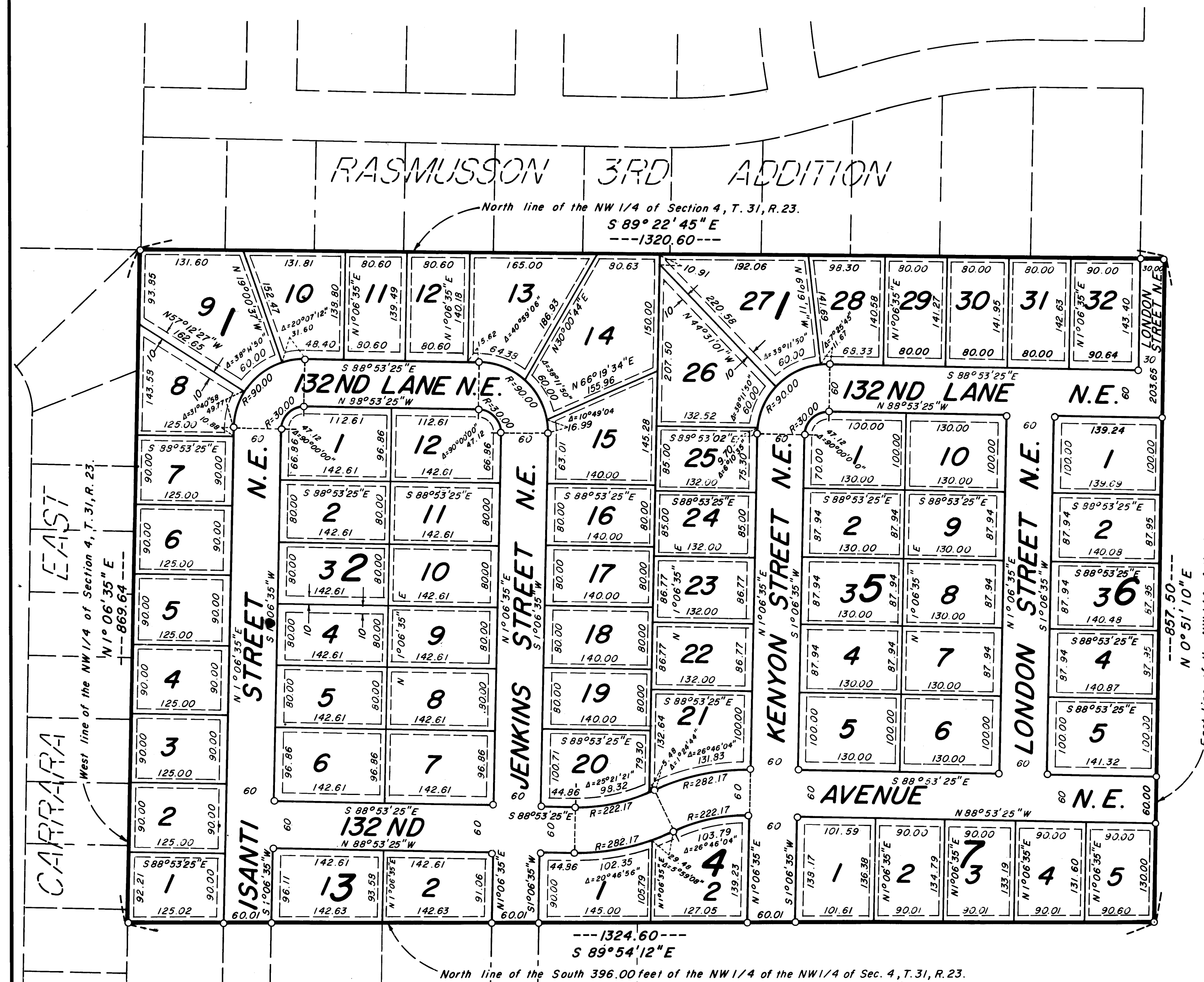


# ERICKSON MEADOWS

CITY OF BLAINE COUNTY OF ANOKA



KNOW ALL PERSONS BY THESE PRESENTS: That Nordic Insulation, Inc. a Minnesota corporation, owner and proprietor of the following described property situated in the County of Anoka, State of Minnesota, to-wit:

That part of the Northwest Quarter of the Northwest Quarter of Section 4, Township 31, Range 23, lying north of the south 396.00 feet thereof.

Has caused the same to be surveyed and platted as ERICKSON MEADOWS and does hereby donate and dedicate to the public for public use forever the Streets, Lanes and Avenue as shown on the plat. Also dedicating the drainage and/or utility easements as shown on the plat. In witness whereof said Nordic Insulation, Inc. has caused these presents to be signed by its proper officers this 21 day of May, 1987.

NORDIC INSULATION:

Steven D. Wrolstad, President      Donna L. Wrolstad, Secretary/Treasurer  
Steven D. Wrolstad      Donna L. Wrolstad

STATE OF MINNESOTA COUNTY OF Ramsey The foregoing instrument was acknowledged before me this 21 day of May, 1987, by Steven D. Wrolstad, president, and Donna L. Wrolstad, secretary/treasurer, of Nordic Insulation, Inc. a Minnesota corporation, on behalf of the corporation.

Collette T. Wagner      Collette T. Wagner  
Notary Public, Ramsey County Minnesota      My commission expires 4-4-91

I hereby certify that I have surveyed and platted the land described in the dedication on this plat as ERICKSON MEADOWS: that the plat is a correct representation of said survey; that all distances are correctly shown on said plat in feet and hundredths of a foot; that the monuments have been correctly placed in the ground as shown; that the outside boundaries are correctly designated on said plat; and that there are no wet lands or public highways to be designated on said plat other than as shown thereon.

Jeffrey N. Caine  
Jeffrey N. Caine, Land Surveyor, Minn. Reg. No. 12251

STATE OF MINNESOTA COUNTY OF ANOKA The surveyors certificate was acknowledged before me, a Notary Public, this 21st day of May, 1987, by Jeffrey N. Caine, Land Surveyor.

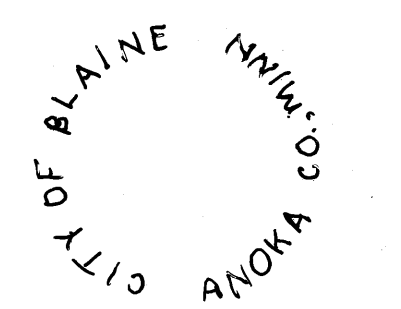
Nancy L. Caine  
Notary Public, Anoka County, Minnesota      My commission expires 9-22-92

CITY OF BLAINE: We hereby certify that the City Council of the City of Blaine, Anoka County, Minnesota, duly accepted and approved the plat of ERICKSON MEADOWS at a regular meeting held this 21st day of MAY, 1987. If applicable, the written comments and recommendations of the Commissioner of Transportation and the County Highway Engineer have been received by the City or the prescribed 30 day period has elapsed without receipt of such comments and recommendations, as provided by Minnesota Statutes, Section 505.03 Subd. 2.

By Thyra Tinklerberg, Mayor      By Richard P. Johnson, City Manager

Checked and approved this 21<sup>st</sup> day of May, 1987.

Mauf D. Auel  
County Surveyor, Anoka County, Minnesota



"NO DELINQUENT TAXES AND TRANSFER ENTERED"  
May 28 1987  
Charles R. Asprey  
Auditor, Anoka County  
By Donald E. Bisley  
Deputy

"NO DELINQUENT TAXES AND TRANSFER ENTERED"  
May 29 1987  
Charles R. Asprey  
Auditor, Anoka County  
By Donald E. Bisley  
Deputy

761945  
OFFICE OF COUNTY RECORDER  
STATE OF MINNESOTA, COUNTY OF ANOKA  
I hereby certify that the within instrument was filed in this office for record on the MAY 29 1987 A.D., 1987 at 2:35 o'clock P.M., and was duly recorded in book 3788 Plats, page 42.

Neil J. Ordahl  
County Recorder  
By A. J. Swanson  
Deputy

**CANE & ASSOCIATES LAND SURVEYORS, INC.**