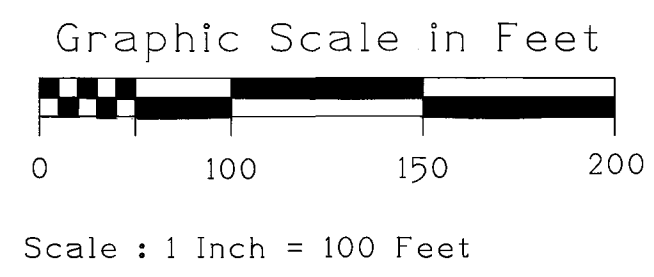
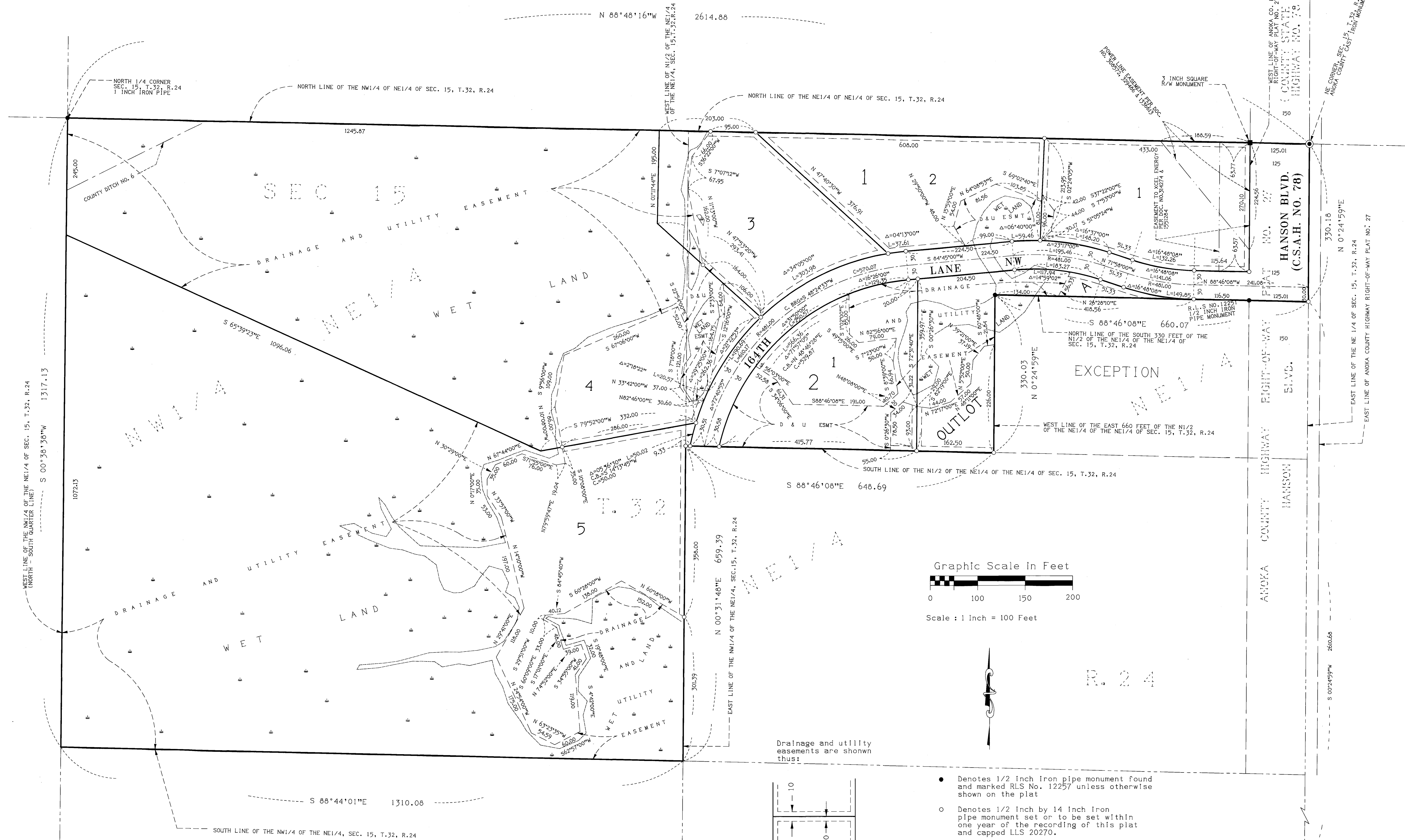


ESTATES OF CEDAR RIDGE

CITY OF ANDOVER
COUNTY OF ANOKA
SEC. 15, T.32, R.24



Drainage and utility easements are shown thus:

- Denotes 1/2 inch Iron pipe monument found and marked RLS No. 12257 unless otherwise shown on the plat
- Denotes 1/2 inch by 14 inch Iron pipe monument set or to be set within one year of the recording of this plat and capped LLS 20270.
- Denotes approximate edge of wet land
- W Denotes wet land
- D & U ESMT. Denotes drainage and utility easement
- C.B. Denotes chord bearing

FOR THE PURPOSES OF THIS PLAT, THE NORTH LINE OF THE NE1/4 OF THE NE1/4 OF SECTION 15, TOWNSHIP 32, RANGE 24 IS ASSUMED TO BEAR NORTH 88 DEGREES, 48 MINUTES, 16 SECONDS WEST