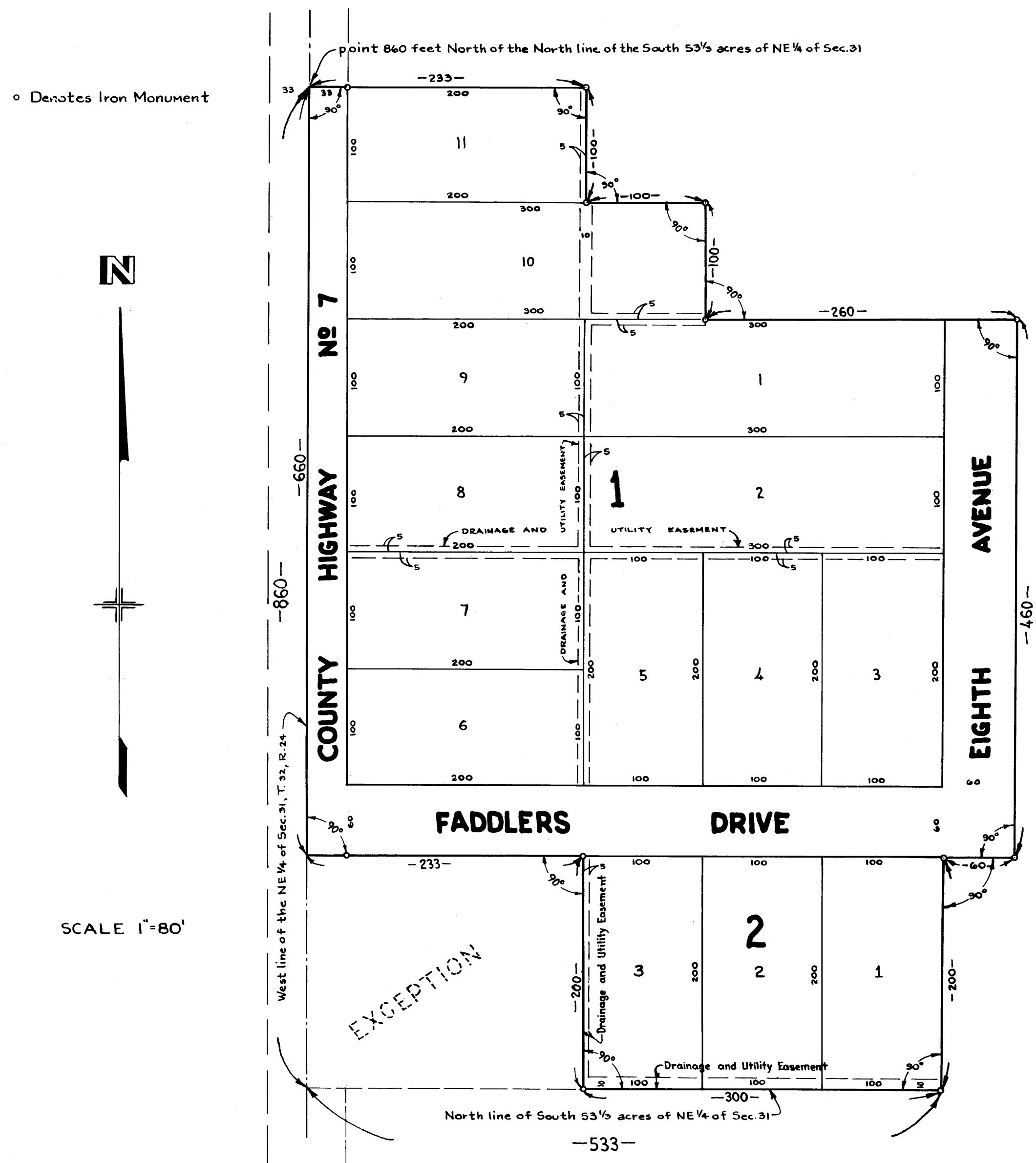


# FADDLER'S 1<sup>ST</sup> ADDITION

## TOWNSHIP OF GROW

## ANOKA COUNTY, MINNESOTA

MINDER ENGINEERING CO., INC. ~ ENGINEERS & SURVEYORS MARCH • 1959



KNOW ALL MEN BY THESE PRESENTS: that we, Julius E. Faddler and Dorothy J. Faddler, his wife, owners and proprietors of the following described property situate in the State of Minnesota and County of Anoka to wit: That part of the NE 1/4 of Section 31, Township 32, Range 24, lying North of the South 53 1/2 acres thereof described as beginning at the intersection of the North line of said South 53 1/2 acres and the West line of said NE 1/4, thence East along the North line of said South 53 1/2 acres a distance of 533 feet, thence North at right angles a distance of 200 feet, thence East at right angles a distance of 60 feet, thence North at right angles a distance of 460 feet, thence West at right angles a distance of 260 feet, thence North at right angles a distance of 100 feet, thence West at right angles a distance of 100 feet, thence North at right angles a distance of 100 feet, thence West at right angles a distance of 233 feet more or less to a point on the West line of said NE 1/4 distant 860 feet North from the point of beginning, thence South along the West line of said NE 1/4 to the point of beginning, <sup>except the West 233 feet of the South 200 feet thereof;</sup> have caused the same to be surveyed and platted as FADDLER'S 1<sup>ST</sup> ADDITION; and do hereby donate and dedicate to the public for the public use forever the Avenue, Drive and Highway as shown on the annexed plat; also subject to drainage and utility easements as shown on the annexed plat for use of municipality or other public utilities for installation and maintenance of facilities installed in and over said easements to serve adjacent or other premises in the vicinity. In witness whereof said Julius E. Faddler and Dorothy J. Faddler have hereunto set their hands and seals this 30<sup>th</sup> day of July A.D. 1959

Signed by: Julius E. Faddler (Seal) and Dorothy J. Faddler (Seal)  
 In Presence of: Elaine S. Johnson and Irma Meyer As to Julius E. Faddler and Dorothy J. Faddler

State of Minnesota } s.s. On this 30<sup>th</sup> day of July A.D. 1959, before me a Notary Public, personally appeared Julius E. Faddler and Dorothy J. Faddler his wife, to me known to be the persons described in and who executed the foregoing instrument, and they acknowledged that they executed the same as their own free act and deed.

Notary Public, Anoka County, Minnesota  
 My Commission Expires March 31, 1960

I hereby certify that I have surveyed and platted the property described on this plat as FADDLER'S 1<sup>ST</sup> ADDITION; that this plat is a correct representation of said survey; that all distances are correctly shown on the plat in feet and decimals of a foot, that the monuments for guidance of future surveys are correctly placed in the ground as shown on the annexed plat, that the outside boundary lines are correctly designated on the plat; that the topography of the land is correctly shown on the plat and that there are no wetlands or public highways to be designated on said plat other than as shown thereon.

Harold R. Olson  
 Surveyor Minnesota Registration No 2039

State of Minnesota } s.s. Above certificate subscribed and sworn to before me, a Notary Public, this 28 day of July A.D. 1959

Notary Public, Anoka County, Minnesota  
 My Commission Expires March 31, 1960

This plat was approved and accepted by the Board of County Commissioners of the County of Anoka, State of Minnesota at a regular meeting thereof held this 10<sup>th</sup> day of August A.D. 1959

by Bob Meroch Stinson Chairman  
 by Kenneth W. Johnson County Auditor

Recommended for approval this 8<sup>th</sup> day of September A.D. 1959

by Ernie J. Lundheim  
 County Highway Engineer, Anoka County, Minnesota

This plat was approved as to form and execution on this 19<sup>th</sup> day of August A.D. 1959

Robert J. Johnson  
 County Attorney, Anoka County, Minnesota

The annexed plat of FADDLER'S 1<sup>ST</sup> ADDITION was approved by the Planning and Zoning Commission and by the Town Board of the Township of Grow at a regular meeting held this 31<sup>st</sup> day of July A.D. 1959

by William K. Stinson Chairman of Town Board  
 by Paul O. Palm Clerk of Town Board

Checked and approved this 11<sup>th</sup> day of August A.D. 1959

Harold R. Olson  
 Anoka County Surveyor

WHEREBY CERTIFY THAT TAXES FOR THE YEAR 1958 ON THE LANDS DESCRIBED WITHIN ARE PAID  
Walter R. Bowers  
 County Treasurer  
 by Norman Jensen Deputy

TAXES PAID  
 This 30<sup>th</sup> day of Sept 1959  
Kenneth H. Campbell  
 Anoka County, Minn.  
Robert J. Johnson Deputy

OFFICE OF REGISTER OF DEEDS  
 STATE OF MINNESOTA, COUNTY OF ANOKA } ss

I hereby certify that the within instrument was filed in this office for record on the 30<sup>th</sup> day of July, 1959, at 2:40 o'clock P.M., and was duly recorded in book 55 of Plats, page 13

Gertrude Skinner  
 Register of Deeds  
 By Margaret Purcell Deputy

SCALE 1"=80'