

# FOLEY COMMERCIAL PARK SECOND ADDITION

Bk 74 Pg. 36  
of Plat

CITY OF COON RAPIDS  
COUNTY OF ANOKA  
SEC. 24, T. 31, R. 24.

KNOW ALL PERSONS BY THESE PRESENTS: That Shamrock Development, Inc., a Minnesota corporation, fee owner of the following described property situated in the State of Minnesota, County of Anoka, to wit:

Lot 2, Block 1, FOLEY COMMERCIAL PARK, according to the recorded plat thereof.

Has caused the same to be surveyed and platted as FOLEY COMMERCIAL PARK SECOND ADDITION and does hereby donate and dedicate to the public for public use forever the public ways and also dedicating the easements, as shown on this plat, for drainage and utility purposes only. Also dedicating to the State of Minnesota the right to restrict access onto U.S. Highway No. 10 and State Trunk Highway No. 47 as shown on this plat. Also dedicating to the County of Anoka the right to restrict access onto C.S.A.H. No. 11 as shown on this plat.

In witness whereof said Shamrock Development, Inc. has caused these presents to be signed by its proper officer this 9<sup>th</sup> day of June, 2008

SHAMROCK DEVELOPMENT, INC.

By: James M. Stanton  
James M. Stanton, President

State of Minnesota, County of Anoka

The foregoing instrument was acknowledged before me this 9<sup>th</sup> day of June, 2008 by James M. Stanton, as President of Shamrock Development, Inc., a Minnesota corporation, on behalf of the corporation.

Signed Angela J. Zajac  
Printed Angela J. Zajac

Notary Public, Anoka County, Minnesota

My Commission expires: January 31, 2010

I hereby certify that I have surveyed and platted the land, or directly supervised the surveying and plating of the land described on the plat as FOLEY COMMERCIAL PARK SECOND ADDITION; that this plat is a correct representation of the boundary survey; that all mathematical data and labels are correctly designated on this plat; that all monuments depicted on this plat have been correctly set; as of the date of this certification, all wet lands and water boundaries and all public ways are shown and labeled as defined in Minnesota Statutes 505.01, Subd. 3.

Rick M. Blom

Rick M. Blom, Land Surveyor  
Minnesota License No. 21729

State of Minnesota, County of Sherburne

The foregoing instrument was acknowledged before me this 9<sup>th</sup> day of May, 2008 by Rick M. Blom, Land Surveyor, Minnesota License No. 21729.

Signed Holly R. Wood  
Printed Holly R. Wood

Notary Public, Sherburne County, Minnesota

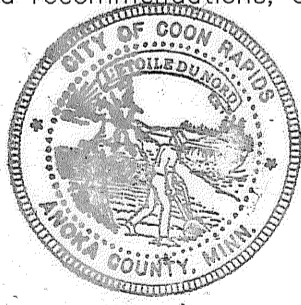
My Commission expires: January 31, 2010

Annexed plat of FOLEY COMMERCIAL PARK SECOND ADDITION was approved by the Planning Commission of the City of Coon Rapids, Minnesota this 17<sup>th</sup> day of April, 2008.

By: Down M. Naev, Chairman

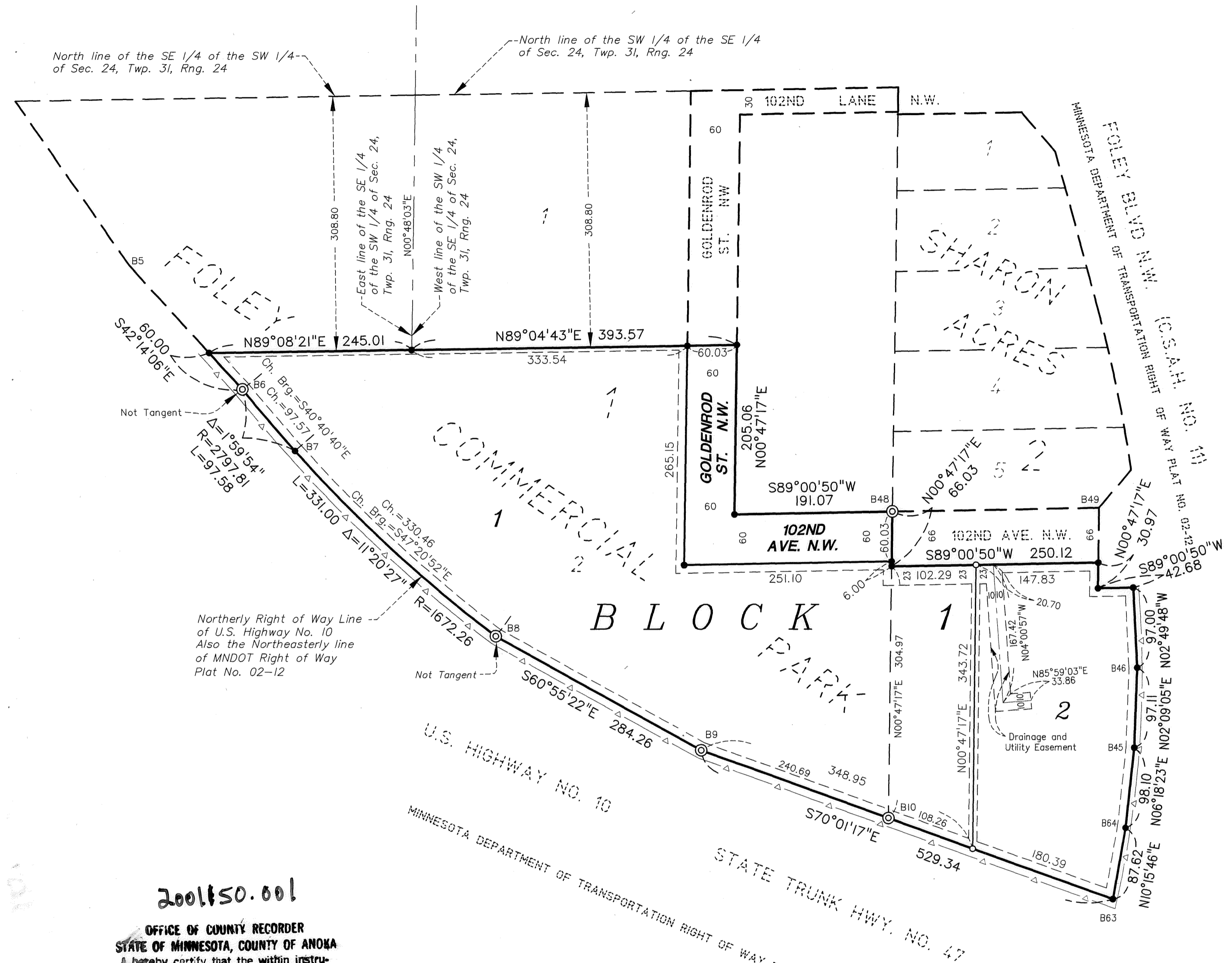
Annexed plat of FOLEY COMMERCIAL PARK SECOND ADDITION was approved by the City Council of Coon Rapids, Minnesota at a regular meeting thereof held this 6<sup>th</sup> day of May, 2008. If applicable, the written comments and recommendations of the Commissioner of Transportation and the County Highway Engineer have been received by the City or the prescribed 30 day period has elapsed without receipt of such comments and recommendations, as provided by Minnesota Statutes Section 505.03, Subdivision 2.

By: John A. Anderson, Mayor  
Attest: John A. Anderson, Clerk



This plat has been checked and approved this 11<sup>th</sup> day of JUNE, 2008

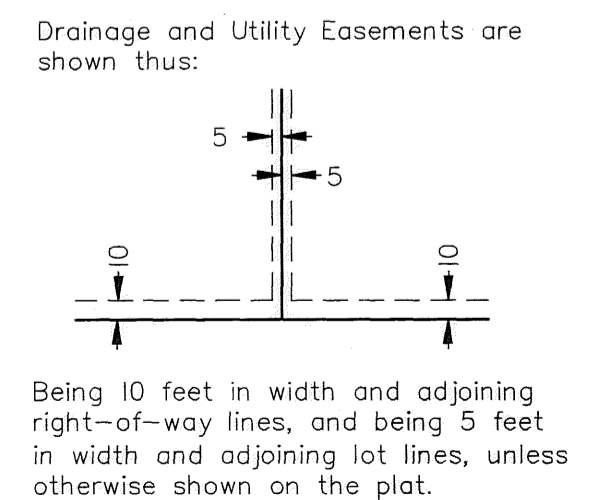
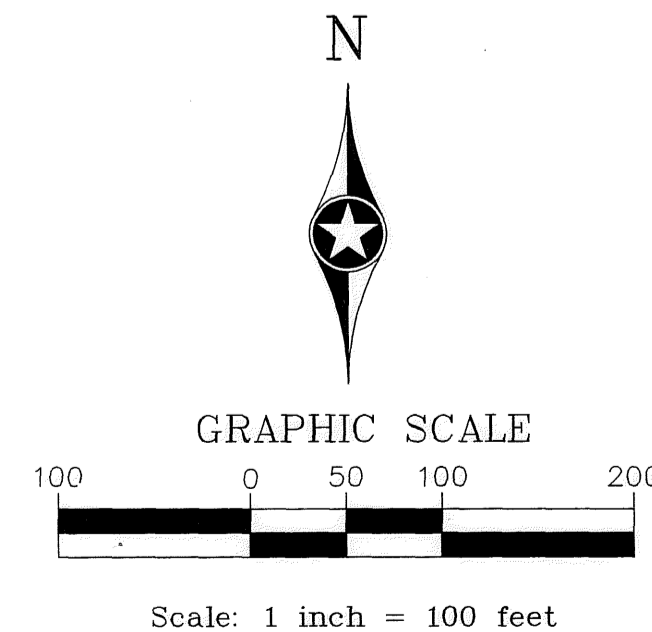
Larry D. Ahl, Anoka County Surveyor



200850.001  
OFFICE OF COUNTY RECORDER  
STATE OF MINNESOTA, COUNTY OF ANOKA  
I hereby certify that the within instrument was filed in this office for record on the 11<sup>th</sup> June A.D., 2008 at 1:21 o'clock P.M., and was duly recorded in book 74 page 36  
Maureen J. Devine  
County Recorder  
By: KS  
Deputy

I HEREBY CERTIFY THAT THE CURRENT AND DELINQUENT TAXES ON THE LANDS DESCRIBED WITHIN ARE PAID AND THE TRANSFER IS ENTERED 6/19/08  
MAUREEN J. DEVINE  
PROPERTY TAX ADMINISTRATOR  
By: Al Schultz  
DEPUTY PROPERTY TAX ADMINISTRATOR

- For the purposes of this plat, the West line of the S.W. 1/4 of the S.E. 1/4, Sec. 24, Twp. 31, Rng. 24, is assumed to bear N00°48'03"E.
- Denotes iron pipe set with a plastic plug stamped R.L.S. 21729.
- Denotes iron monument found.
- ⊙ Denotes Found MNDot Right of Way Monument.
- △— Denotes Right of Access dedicated to the State of Minnesota and the County of Anoka.



856.00

John Oliver & Associates, Inc.