

FOLEY MANOR SECOND ADDITION

KNOW ALL MEN BY THESE PRESENTS: That Norwest Bank Minneapolis, National Association, United States Corporation, a owner and proprietor of the following described property situated in the In the County of Anoka, State of Minnesota to wit:

Outlot A and that part of the East 1/2 of vacated Holly Street NW which lies within said Outlet A, Foley Manor, Anoka County, Minnesota

Outlot B and that part of Outlot A, FOLEY MANOR lying west of the centerline of vacated HOLLY STREET N.W., as shown on the plat of L.O. PETTIT'S ANOKA HOMES. That part of FOLEY BOULEVARD as dedicated in the plat of FOLEY MANOR which abuts upon Outlots A and B, FOLEY MANOR, lying southwesterly of the centerline of vacated HOLLY STREET N.W., as shown in the plat of L.O. PETTIT'S ANOKA HOMES. Subject to the donation and dedication to the public for public use forever as boulevard as set forth in the dedication clause and as shown on the plat of FOLEY MANOR, filed as Doc. No. 107905 in the office of the Registrar of Titles.

Has caused these presents to be surveyed and platted as FOLEY MANOR SECOND ADDITION and do hereby donate and dedicate to the public for public use forever the utility and drainage easements as shown on the plat. In witness whereof said Norwest Bank Minneapolis, National Association, a United States corporation, has caused these presents to be signed by its proper officers this 29th day of May, 1987, in behalf of said corporation.

NORWEST BANK MINNEAPOLIS NATIONAL ASSOCIATION

Michael A. Wagner
Michael A. Wagner,
Vice President

Winston B. Dolland
Winston B. Dolland,
Assistant Vice President

STATE OF MINNESOTA
COUNTY OF Hennepin

The foregoing instrument was acknowledged before me this 29th day of May, 1987, by Michael A. Wagner, Vice President and Winston B. Dolland, Assistant Vice President, Norwest Bank Minneapolis, National Association, a United States Corporation

Edna J. Tanner
Notary Public, Hennepin County, Minnesota
My Commission Expires May 26th, 1990



I hereby certify that I surveyed the property described on this plat as FOLEY MANOR SECOND ADDITION, that this plat is a correct representation of the survey, that all distances are shown in feet and hundredths of a foot, that all monuments have been correctly placed in the ground as shown, that the outside boundary lines are correctly designated on the plat, and that there are not wetlands to be designated on this plat, other than shown thereon.

Leonard Pilarski
Leonard Pilarski, Land Surveyor
Minnesota Registration No. 15479

STATE OF MINNESOTA
COUNTY OF HENNEPIN

The foregoing instrument was acknowledged before me this 27th day of May, 1987, by Leonard Pilarski Land Surveyor.

Susan J. Auer
Notary Public, Hennepin County, Minnesota
My Commission Expires March 7, 1989



PLANNING COMMISSION
COON RAPIDS, MINNESOTA

This plat of FOLEY MANOR SECOND ADDITION was approved by the Planning Commission of the City of Coon Rapids, Minnesota at a regular meeting thereof held this 18th day of December, 1986.

Donna M. Macne Chairman
Shirley A. Zapp Secretary

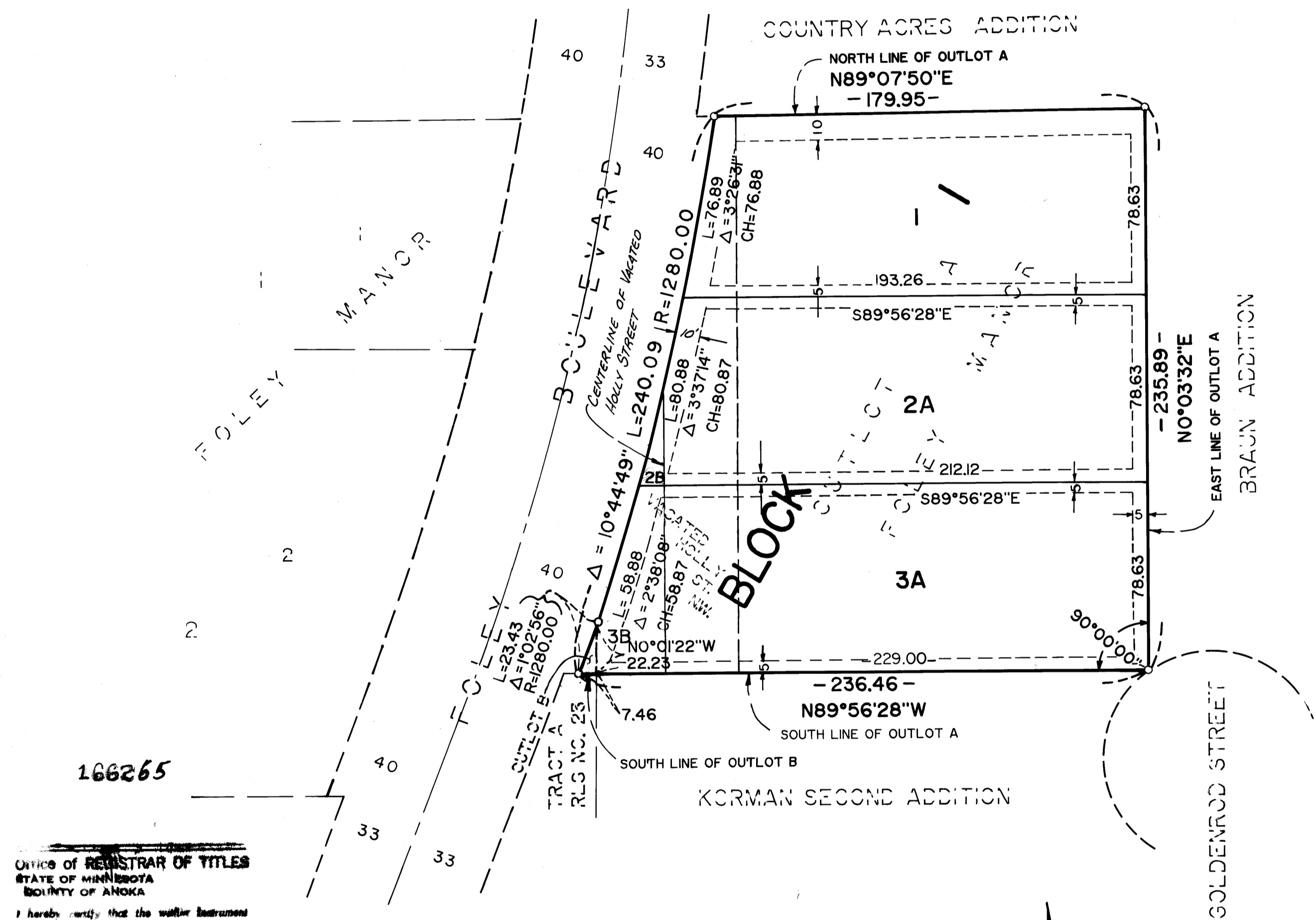
CITY COUNCIL
COON RAPIDS, MINNESOTA

This plat of FOLEY MANOR SECOND ADDITION was approved and accepted by the City Council of the City of Coon Rapids, Minnesota at a regular meeting thereof held this 24th day of March, 1987.

CITY COUNCIL OF COON RAPIDS, MINNESOTA
Robert B. Lewis Mayor
Betty Backes, Clerk Clerk

ANOKA COUNTY SURVEYOR

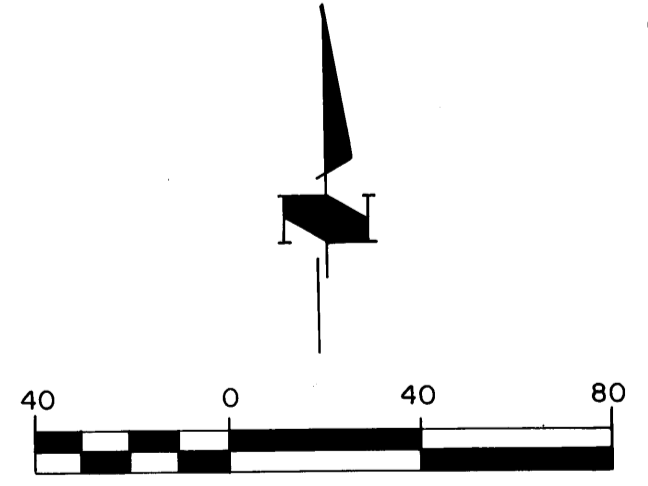
This plat was checked and approved on this 22nd day of June, 1987.
Mark D. Anderson
Anoka Surveyor



Office of REGISTRAR OF TITLES
STATE OF MINNESOTA
COUNTY OF ANOKA
I hereby certify that the within instrument was filed in this office on the 3rd day of Aug, A.D. 1987 at 9 o'clock A.M.
Ed J. Omdahl Registrar of Titles
By Katherine Beer Deputy Registrar of Titles

772964
BENJEL OF COUNTY RECORDER
STATE OF MINNESOTA, COUNTY OF ANOKA
I hereby certify that the within instrument was filed in this office for record on the AUG 3 1987 A.D., 1987 at 9 o'clock A.M., and was duly recorded in book 384 page 10
Ed J. Omdahl County Recorder
By P. H. Rike Deputy

UTILITY & DRAINAGE EASEMENTS
SHOWN BEING 10 FEET IN WIDTH ALONG ROAD & NORTH LINE AND 5 FEET IN WIDTH ALONG EAST & SOUTH LINES & ADJOINING LOT LINES



SCALE: 1-inch = 40 feet
Bearings based on assumed datum
o Denotes iron monuments

I HEREBY CERTIFY THAT THE TAXES PAYABLE IN THE YEAR 1987 ON THE LANDS DESCRIBED WITHIN ARE PAID
Donald C. Bailey
Anoka County Treasurer

"NO DELINQUENT TAXES AND TRANSFER ENTERED"

August 3rd 1987
Charles R. Lehner Auditor, Anoka County
By James Schultz Deputy

"NO DELINQUENT TAXES AND TRANSFER ENTERED"

June 22 1987
Charles R. Lehner Auditor, Anoka County
By Jan Jensen Deputy

