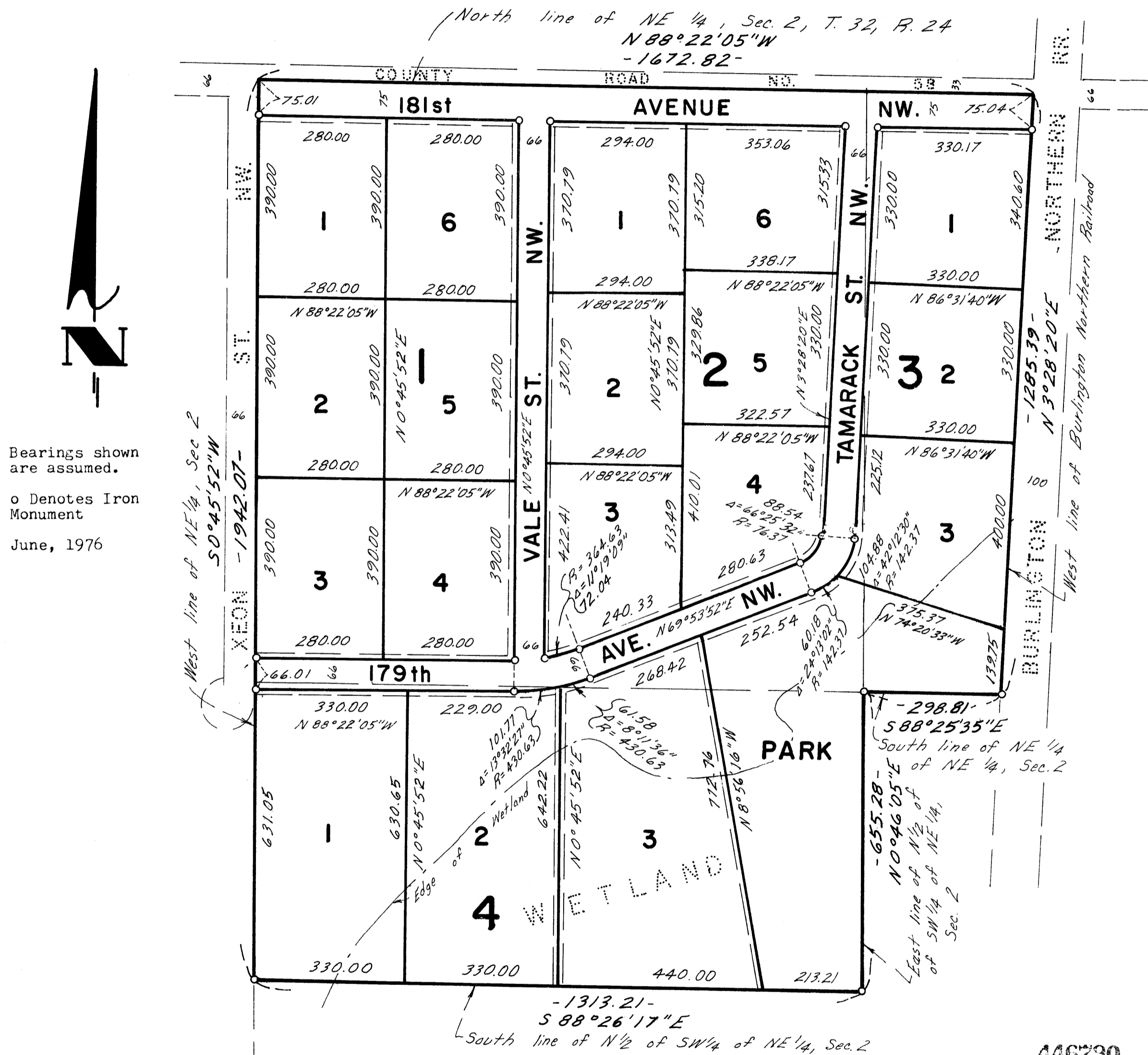


FOREST MEADOWS

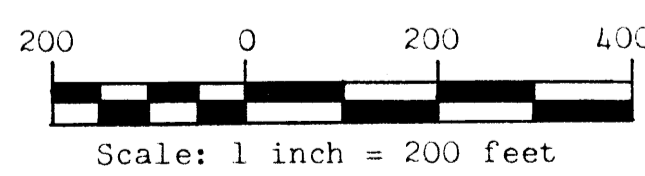
CITY OF ANDOVER
COUNTY OF ANOKA

LOT SURVEYS CO.
LAND SURVEYORS



Bearings shown are assumed.
o Denotes Iron Monument
June, 1976

Utility and Drainage Easements shown thus being 10 feet in width and parallel with lot lines unless otherwise indicated.



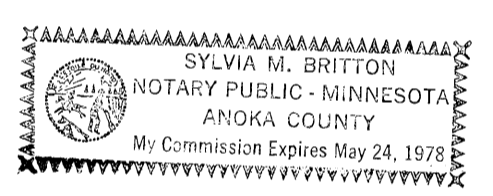
446730
OFFICE OF REGISTER OF DEEDS
STATE OF MINNESOTA, COUNTY OF ANOKA
I hereby certify that the within instrument was filed in this office for record on the JUN 18 1976 A.D., 1976 at 3:10 o'clock P.M., and was duly recorded in book 20 of page 11

Virginia A. Holderness
Register of Deeds
By Virginia A. Holderness Deputy

KNOW ALL MEN BY THESE PRESENTS: That Raymond C. DeLong and Alice DeLong, his wife, owners and proprietors, of the following described property situate in the County of Anoka, State of Minnesota to-wit:
The Northwest 1/4 of the Northeast 1/4 of Section 2, Township 32, Range 24, Anoka County, Minnesota.
Also, the North 1/2 of the Southwest 1/4 of the Northeast 1/4 of Section 2, Township 32, Range 24, Anoka County, Minnesota.
And also, that part of the Northeast 1/4 of the Northeast 1/4 of Section 2, Township 32, Range 24, Anoka County, Minnesota lying West of the Burlington Northern Railroad right of way.
Have caused the same to be surveyed and platted as FOREST MEADOWS and do hereby donate and dedicate to the public for public use forever the Streets, Avenues, Park and Utility and Drainage Easements as shown on the plat. Also dedicating to the County of Anoka, the right of access to County Road No. 58 from Lots 1 and 6, Block 1, and Lots 1 and 6, Block 2, and Lot 1, Block 3. In witness whereof said Raymond C. DeLong and Alice DeLong, his wife, have hereunto set their hands and seals this 14th day of June A.D., 1976.

Signed:
Raymond C. DeLong
Raymond C. DeLong
Alice De Long
Alice DeLong

State of Minnesota
County of Anoka The foregoing instrument was acknowledged before me this 14th day of June A.D., 1976, by Raymond C. DeLong and Alice DeLong, his wife.



Sylvia M. Britton
Notary Public, Anoka County, Minnesota.
My Commission Expires May 24, 1978

I hereby certify that I have surveyed and platted the property described on this plat as FOREST MEADOWS; that this plat is a correct representation of said survey; that the distances are correctly shown on said plat in feet and hundredths of a foot; that all monuments have been correctly placed in the ground as shown on said plat; that the outside boundary lines are correctly designated on said plat; and that there are no wet lands or public highways to be designated other than as shown thereon.

Raymond A. Prasch
Raymond A. Prasch, Registered Land Surveyor
Minn. Reg. No. 6743

State of Minnesota.
County of Hennepin The foregoing instrument was acknowledged this 14th day of JUNE A.D., 1976, by Raymond A. Prasch, Registered Land Surveyor.

Gerald T. Coyne
Gerald T. Coyne - Notary Public, Hennepin County, Minnesota
My Commission Expires September 14, 1976

This plat of FOREST MEADOWS was approved and accepted by the City Council of Andover, Minnesota, at a regular meeting thereof held this 15th day of June A.D., 1976.

By Richard J. Schneider Mayor By Patricia Lindquist Clerk
Checked and approved this 17th day of June A.D., 1976.

Robert W. Anderson
Anoka County Surveyor
June 18 1976
Charles E. Lippin
Auditor, Anoka County
John M. O'Connell
Deputy