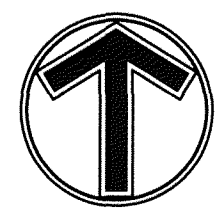
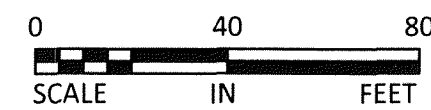


FOREST VIEW ACRES SECOND ADDITION

Book 76 Abstract page 25
CITY OF LINO LAKES
COUNTY OF ANOKA
SEC. 4, T. 31, R. 22



NORTH



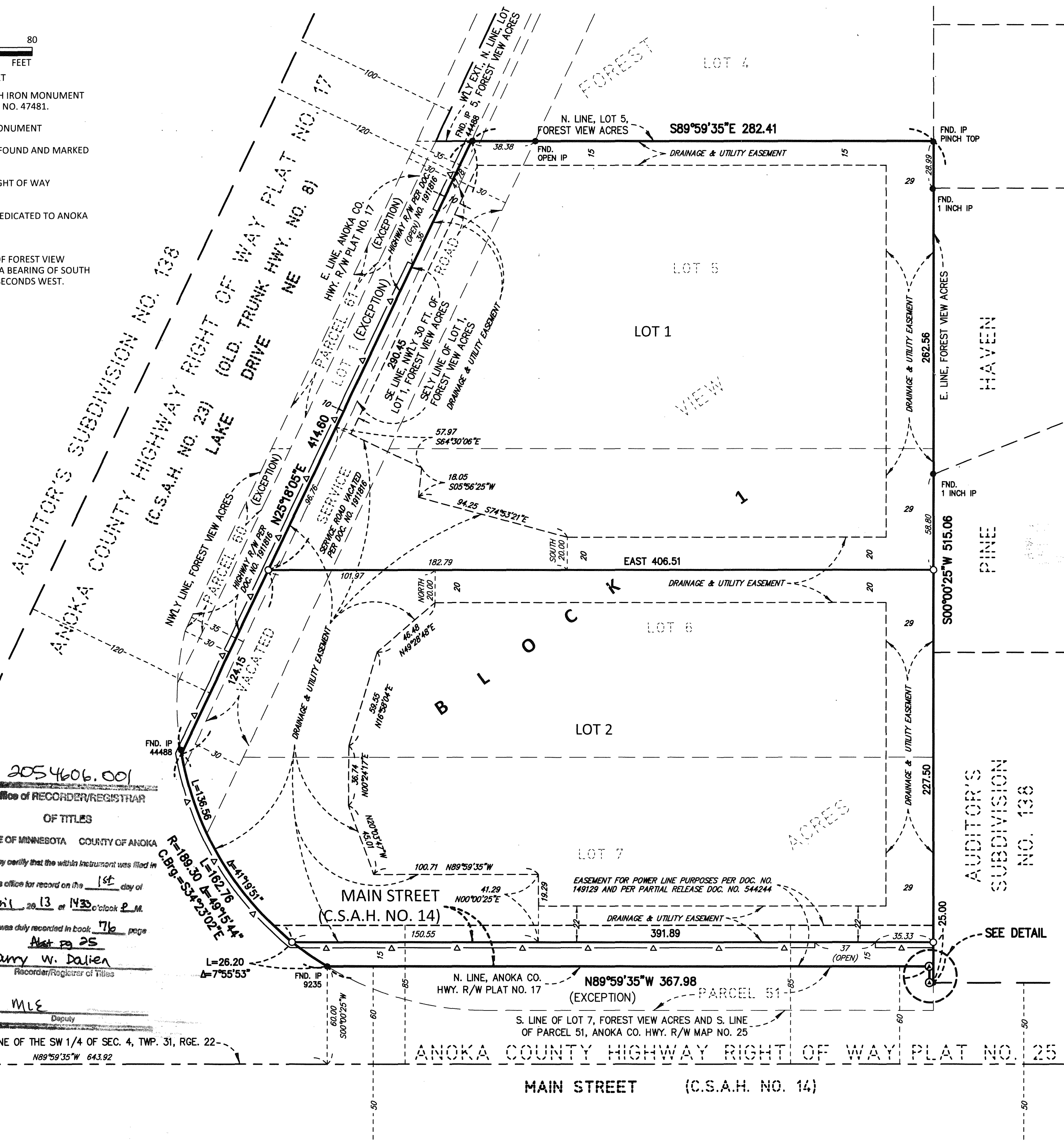
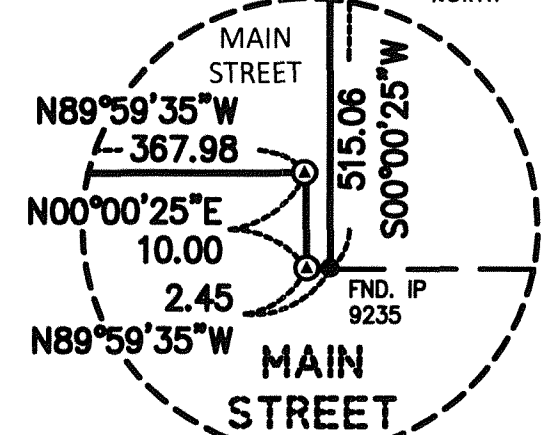
1 INCH = 40 FEET

- DENOTES 1/2 INCH BY 14 INCH IRON MONUMENT SET AND MARKED BY LICENSE NO. 47481.
- ⊙ DENOTES ANOKA COUNTY MONUMENT
- DENOTES IRON MONUMENT FOUND AND MARKED AS SHOWN.
- ⊙ DENOTES ANOKA COUNTY RIGHT OF WAY MONUMENT
- △— DENOTES RIGHT OF ACCESS DEDICATED TO ANOKA COUNTY

THE EAST LINE OF THE PLAT OF FOREST VIEW ACRES IS ASSUMED TO HAVE A BEARING OF SOUTH 00 DEGREES 00 MINUTES 25 SECONDS WEST.



DETAIL NO SCALE



2054606.00
Office of RECORDER/REGISTRAR
OF TITLES
STATE OF MINNESOTA COUNTY OF ANOKA
I hereby certify that the within instrument was filed in this office for record on the 1st day of April 2013 at 1:30 o'clock P.M. and was duly recorded in book 76 page 25
Larry W. Dalien
Recorder/Registrar of Titles

By MLE
Deputy

KNOW ALL PERSONS BY THESE PRESENTS: That Rademacher Family Limited Partnership, a Minnesota limited partnership, owner of the following described property:

All of Lots 5, 6 and 7, FOREST VIEW ACRES
AND
All those parts of the vacated service road per Doc. No. 1911816, lying South of the westerly extension of the North line of Lot 5, FOREST VIEW ACRES, and Lot 1, FOREST VIEW ACRES, lying South of the westerly extension of the North line of Lot 5, FOREST VIEW ACRES, EXCEPT THEREFROM the following parcels:

Parcels 60 and 61, ANOKA COUNTY HIGHWAY RIGHT-OF-WAY PLAT NO. 17, according to the map or plat thereof on file and of record in the Office of the Anoka County Recorder.
Parcel 51, ANOKA COUNTY HIGHWAY RIGHT-OF-WAY PLAT NO. 25, according to the map or plat thereof on file and of record in the Office of the Anoka County Recorder.
The Northwesterly 30 feet of Lot 1, FOREST VIEW ACRES, lying South of the westerly extension of the North line of Lot 5, FOREST VIEW ACRES.

Has caused the same to be surveyed and platted as FOREST VIEW ACRES SECOND ADDITION and does hereby dedicate to the public for public use the public way and drainage and utility easements as shown on this plat. Also dedicating to the County of Anoka the right of access onto County State Aid Highway No. 14 and County State Aid Highway No. 23 as shown on this plat.

In witness whereof said Rademacher Family Limited Partnership, a Minnesota limited partnership, has caused these presents to be signed by its proper partner this 28th day of March, 2013.

Rademacher Family Limited Partnership
SIGNED: William C. Rademacher, its General Partner
Karen K. Rademacher

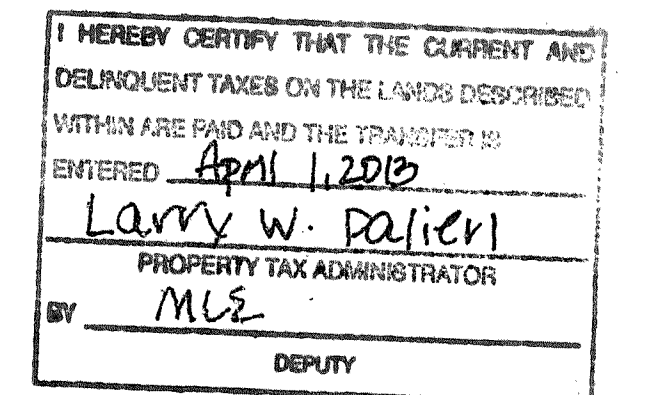
STATE OF MINNESOTA
COUNTY OF Anoka
This instrument was acknowledged before me this 28th day of March, 2013 by William + Karen Rademacher, its General Partner of Rademacher Family Limited Partnership, a Minnesota limited partnership, on behalf of the partnership.

Lisa Hogstad-Osterhues
Lisa Hogstad-Osterhues
Notary Public, Anoka County, Minnesota
My Commission Expires 1-31-15



SURVEYOR'S CERTIFICATE
I Marcus F. Hampton do hereby certify that this plat was prepared by me or under my direct supervision; that I am a duly Licensed Land Surveyor in the State of Minnesota; that this plat is a correct representation of the boundary survey; that all mathematical data and labels are correctly designated on this plat; that all monuments depicted on this plat have been, or will be correctly set within one year; that all water boundaries and wet lands, as defined in Minnesota Statutes, Section 505.01, Subd. 3, as of the date of this certificate are shown and labeled on this plat; and all public ways are shown and labeled on this plat.

Dated this 8th day of March, 2013.
Marcus F. Hampton
Marcus F. Hampton, Licensed Land Surveyor, Minnesota License No. 47481



STATE OF MINNESOTA
COUNTY OF Hennepin
This instrument was acknowledged before me this 8th day of March, 2013 by Marcus F. Hampton.

Barbara Yotter
Notary Public, Chisago County, Minnesota
My Commission Expires January 31, 2015



CITY COUNCIL, CITY OF LINO LAKES, MINNESOTA
This plat of FOREST VIEW ACRES SECOND ADDITION was approved and accepted by the City Council of the City of Lino Lakes, Minnesota at a regular meeting thereof held this 25th day of March, 2013, and said plat is in compliance with the provisions of Minnesota Statutes, Section 505.03, Subd. 2.

City Council, City of Lino Lakes, Minnesota
By: [Signature], Mayor By: [Signature], Clerk

ANOKA COUNTY SURVEYOR
I hereby certify that in accordance with Minnesota Statutes, Section 505.021, Subd. 11, this plat has been reviewed and approved this 1st day of April, 2013.

By: Larry D. Hoium by Charles F. Letzen, Deputy
Larry D. Hoium, Anoka County Surveyor

\$56.00
MFRA, INC.
ENGINEERING, PLANNING
AND LAND SURVEYING