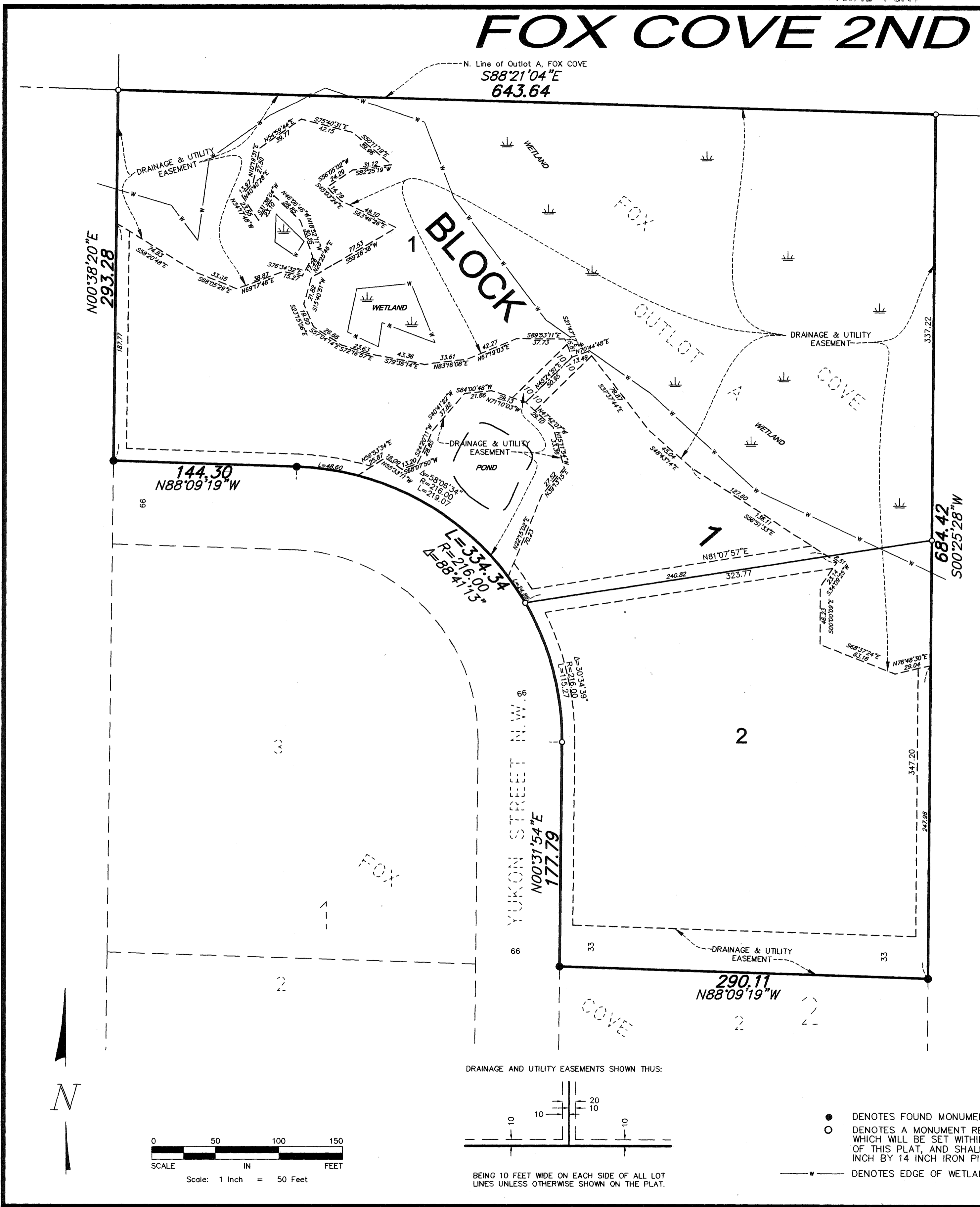


# FOX COVE 2ND ADDITION

3K 73 of Abat  
pg 19

City of Oak Grove  
County of Anoka  
Sec. 28, Twp. 33, Rge. 24



KNOW ALL PERSONS BY THESE PRESENTS: That Fox Cove, LLC, a Minnesota Limited Liability Company, owner and proprietor of the following described property situated in the County of Anoka, State of Minnesota, to-wit:

Outlot A, FOX COVE, according to the recorded plat thereof, Anoka County, Minnesota.

Has caused the same to be surveyed and platted as FOX COVE 2ND ADDITION and does hereby donate and dedicate to the public for public use forever the drainage and utility easements as shown on the plat. In witness whereof said Fox Cove, LLC, has caused these presents to be signed by its proper officer this 16th day of April, 2007.

FOX COVE, LLC  
*Ronald L. Nordin*  
 Ronald L. Nordin as Chief Manager

STATE OF MINNESOTA) The foregoing instrument was acknowledged before me this 12th day of April, 2007, by Ronald L. Nordin as Chief Manager of Fox Cove, LLC, a Minnesota Limited Liability Company, on behalf of the company.

*Catherine M. W. Turner*  
 NOTARY PUBLIC - MINNESOTA  
 MY COMMISSION EXPIRES JAN. 31, 2010

*Catherine M. W. Turner*  
 Notary Public, Anoka County, Minnesota  
 My Commission expires 1/31/2010

I hereby certify that I have surveyed and platted the land described in the dedication on this plat as FOX COVE 2ND ADDITION; that this plat is a correct representation of said survey; that all distances are correctly shown on said plat in feet and hundredths of a foot; that all monuments have been correctly placed in the ground as shown, or shall be correctly placed in the ground within one year after the recording date of this plat; that the outside boundaries are correctly designated on said plat; and that there are no wetlands, in accordance with M.S. 505.02 Subdivision 1, or public highways to be designated on said plat other than as shown thereon.

*Jeffrey N. Caine*  
 Jeffrey N. Caine, Registered Land Surveyor  
 Minnesota License No. 12251

STATE OF MINNESOTA) The surveyors certificate was acknowledged before me a Notary Public, this 3rd day of April, 2007, COUNTY OF ANOKA ) by Jeffrey N. Caine, Land Surveyor.

*Jill M. Kent*  
 NOTARY PUBLIC - MINNESOTA  
 My Commission Expires Jan. 31, 2010

*Jill M. Kent*  
 Notary Public, Anoka County, Minnesota  
 My Commission expires 01-31-10

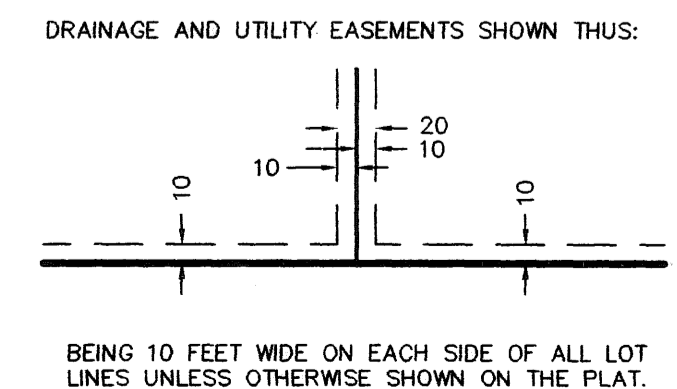
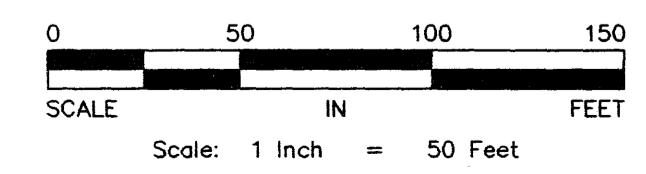
CITY OF OAK GROVE

We hereby certify that the City Council of the City of Oak Grove, Anoka County, Minnesota, duly accepted and approved the plat of FOX COVE 2ND ADDITION at a regular meeting held this 26th day of March, 2007. If applicable, the written comments and recommendations of the Commissioner of Transportation and the County Highway Engineer have been received by the city or the prescribed 30 day period has elapsed without receipt of such comments and recommendations, as provided by Minn. Statutes, Section 505.03, Subd. 2.

By *James A. Jank* Mayor By *Myrl Pedersen* Clerk  
 Checked and approved this 27th day of April, 2007.  
 By *Larry D. Stein*  
 Anoka County Surveyor

1992679.002  
 OFFICE OF COUNTY RECORDER  
 STATE OF MINNESOTA, COUNTY OF ANOKA  
 I hereby certify that the within instrument was filed in this office to record on the 27 April A.D., 2007  
 at 8:46 o'clock A.M., and was duly recorded in book 13 next page 19  
*Maureen J. Devine*  
 County Recorder  
 By *JMK*  
 Deputy

I HEREBY CERTIFY THAT THE CURRENT AND DELINQUENT TAXES ON THE LANDS DESCRIBED WITHIN ARE PAID AND THE TRANSFER IS ENTERED April 27, 2007  
*Maureen J. Devine*  
 PROPERTY TAX ADMINISTRATOR  
 By *S. Culver*  
 DEPUTY PROPERTY TAX ADMINISTRATOR



- DENOTES FOUND MONUMENT.
- DENOTES A MONUMENT REQUIRED BY MINNESOTA STATE STATUTE WHICH WILL BE SET WITHIN ONE YEAR OF THE RECORDING DATE OF THIS PLAT, AND SHALL BE EVIDENCED BY A 1/2" INCH BY 14 INCH IRON PIPE MARKED BY RLS 12251.
- W — DENOTES EDGE OF WETLAND

For the purposes of this plat, the north line of Outlot A, FOX COVE, Anoka County, Minnesota, is assumed to bear S88°21'04"E

# 56.02

