

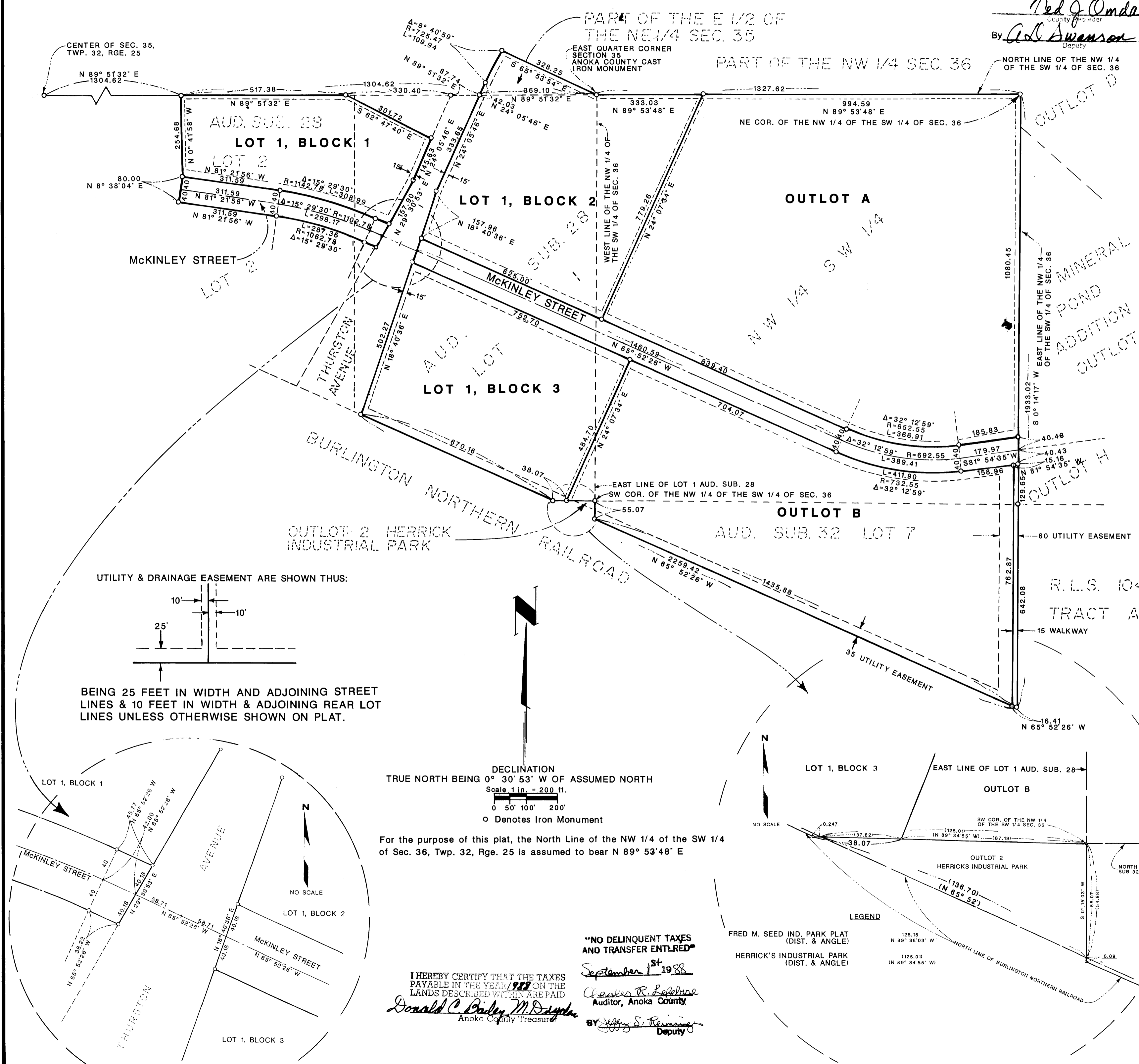
821584

FRED M. SEED INDUSTRIAL PARK CITY OF ANOKA COUNTY OF ANOKA

Jim Kyro & Associates, Inc.
PROFESSIONAL LAND SURVEYORS
AND LAND DEVELOPMENT CONSULTANTS

OFFICE OF COUNTY RECORDER
STATE OF MINNESOTA, COUNTY OF ANOKA
I hereby certify that the within instrument was filed in this office for record on the SEP 1, 1988 A.D. 19
4:15 o'clock P.M. and was duly recorded in book 3945 page 38

By Paul J. Omdahl
County Recorder
Attest: Carl Swanson
Deputy



UTILITY & DRAINAGE EASEMENT ARE SHOWN THUS:

BEING 25 FEET IN WIDTH AND ADJOINING STREET LINES & 10 FEET IN WIDTH & ADJOINING REAR LOT LINES UNLESS OTHERWISE SHOWN ON PLAT.

DECLINATION
TRUE NORTH BEING 0° 30' 53" W OF ASSUMED NORTH
Scale 1 in. = 200 ft.

0 50' 100' 200'

○ Denotes Iron Monument

For the purpose of this plat, the North Line of the NW 1/4 of the SW 1/4 of Sec. 36, Twp. 32, Rge. 25 is assumed to bear N 89° 53' 48" E

"NO DELINQUENT TAXES AND TRANSFER ENTITLED"

September 1 1988

James R. Kyro
Auditor, Anoka County

BY Jeffrey S. Reinhardt
Deputy

I HEREBY CERTIFY THAT THE TAXES PAYABLE IN THE YEAR 1988 ON THE LANDS DESCRIBED WITHIN ARE PAID

Donald C. Bailey, M.D.
Anoka County Treasurer

KNOW ALL MEN BY THESE PRESENTS: That James M. Seed and Eva C. Seed, husband and wife, and John C. Seed and Mary Nell Seed, husband and wife, owners and proprietors of the following described property situated in the County of Anoka, State of Minnesota, to-wit:

That part of Lot 1, Auditors Subdivision 28 lying north of Outlot 2 Herrick Industrial Park and lying easterly of the following described line: Commencing at the East 1/4 corner of Section 35 Township 32, Range 25; thence on an assumed bearing of South 89 degrees 51 minutes 32 seconds West along the East-West Quarter line of said Section 35 a distance of 369.10 feet to the point of Beginning; thence South 24 degrees 05 minutes 46 seconds West a distance of 333.65 feet; thence South 18 degrees 40 minutes 36 seconds West a distance of 740.59 feet to the northerly line of the Burlington Northern, Inc. railroad right-of-way and there terminating.

That part of Lot 1 and Lot 2, Auditors Subdivision 28 described as follows: Commencing at the East 1/4 corner of Section 35 Township 32, Range 25; thence on an assumed bearing of South 89 degrees 51 minutes 32 seconds West along the East-West Quarter line of said Section 35 a distance of 787.24 feet to the point of Beginning; thence South 89 degrees 51 minutes 32 seconds West along said East-West Quarter line a distance of 517.38 feet; thence South 0 degrees 41 minutes 58 seconds East a distance of 254.68 feet; thence South 8 degrees 38 minutes 04 seconds West a distance of 80 feet; thence South 81 degrees 21 minutes 56 seconds East a distance of 311.59 feet; thence along a tangential curve to the right having a radius of 1062.78 feet, central angle of 15 degrees 29 minutes 30 seconds, a distance of 287.36 feet; thence South 65 degrees 52 minutes 26 seconds East a distance of 38.22 feet; thence North 29 degrees 30 minutes 53 seconds East a distance of 238.26 feet; thence North 24 degrees 05 minutes 46 seconds East a distance of 145.63 feet; thence North 62 degrees 47 minutes 40 seconds West a distance of 301.72 feet to the point of Beginning and there terminating.

The Northwest 1/4 of the Southwest 1/4 of Section 36, Township 32, Range 25.
Lot 7, Auditor's Subdivision 32.
That part of the East 1/2 of the Northeast 1/4 of Section 35, Township 32, Range 25, described as follows: Beginning at the southeast corner of said East 1/2 of the Northeast 1/4; thence on an assumed bearing of South 89 degrees 51 minutes 32 seconds west along the south line of said East 1/2 of the Northeast 1/4 a distance of 369.10 feet; thence on a bearing of North 24 degrees 05 minutes 46 seconds East a distance of 42.03 feet; thence along a tangential curve to the right having a radius of 725.47 feet, central angle of 8 degrees 40 minutes 59 seconds, a distance of 109.94 feet; thence South 65 degrees 53 minutes 54 seconds East to the point of beginning and there terminating.

Have caused the same to be surveyed and platted as FRED M. SEED INDUSTRIAL PARK and do hereby donate and dedicate to the public for public use forever the Street, Walkway and utility and drainage easements as shown on the plat.

IN WITNESS WHEREOF, James M. Seed and Eva C. Seed, and John C. Seed and Mary Nell Seed, have caused the presents to be signed this 24th day of August, 1988.

James M. Seed
James M. Seed
Eva C. Seed
Eva C. Seed

John C. Seed
John C. Seed
Mary Nell Seed
Mary Nell Seed

STATE OF Rhode Island
COUNTY OF Providence

The foregoing instrument was acknowledged before me this 24th day of August, 1988, by James M. Seed and Eva C. Seed, husband and wife.

Elizabeth J. Lamb
Notary Public

STATE OF Rhode Island
COUNTY OF Providence

The foregoing instrument was acknowledged before me this 24th day of August, 1988, by John C. Seed and Mary Nell Seed, husband and wife.

Elizabeth J. Lamb
Notary Public

I hereby certify that I have surveyed and platted the property described in this plat as FRED M. SEED INDUSTRIAL PARK, and that this plat is a correct representation of said survey; that the distances are correctly shown on said plat in feet and hundredths of a foot; that all monuments have been correctly placed in the ground as shown on said plat; that the outside boundary lines are correctly designated on said plat; and that there are no wetlands or public highways to be designated other than as shown thereon.

STATE OF MINNESOTA
COUNTY OF HENNEPIN

The foregoing instrument was acknowledged before me this 25th day of August, 1988, by James R. Kyro, Land Surveyor.

Jeanette R. Kyro
Jeanette R. Kyro, Notary Public, Hennepin Co., Minn.
My Commission Expires: June 26, 1991

CITY OF ANOKA
This plat of FRED M. SEED INDUSTRIAL PARK was approved by the Planning Commission of the City of Anoka at a regular meeting thereof held this 12th day of July, 1988.

Signed: Paul J. Foley, Chairman Attest: Robert Kirchner, Secretary

CITY OF ANOKA
We hereby certify that the City Council of the City of Anoka, Anoka County, Minnesota, duly accepted and approved the plat of FRED M. SEED INDUSTRIAL PARK at a regular meeting thereof held this 18th day of July, 1988. If applicable, the written comments and recommendations of the Commissioner of Transportation and the County Highway Engineer have been received by the City or the prescribed 30 day period has elapsed without receipt of such comments and recommendations, as provided by Minn. Statutes, Section 505.03, Subd. 2.

Signed: Stephen M. Halverson, Mayor Attest: Mark E. Nagel, Clerk

Checked and approved this 24th day of Sept, 1988.

Merlyn Anderson
Merlyn Anderson, Anoka County Surveyor