

FRIDLEY SENIOR ADDITION

CITY OF FRIDLEY
COUNTY OF ANOKA
SEC. 14, TWP. 30, RGE. 24

KNOW ALL PERSONS BY THESE PRESENTS: That The City of Fridley Housing and Redevelopment Authority, a public body, corporate and politic, owner and proprietor of the following described property:

Lots 6, 7, 8, 9, 10, 11, 12, 13, 15 and 16, all in Block 1, FRIDLEY PLAZA CENTER, Anoka County, Minnesota.

And

That part of vacated 5th Street NE, as created and dedicated in the plat of FRIDLEY PLAZA CENTER, Anoka County, Minnesota, accruing thereto by reason of street vacation.

And

That part of vacated Fourmies Avenue NE, formerly known as 64th Avenue NE and Minnesota Street, as created and dedicated in the plat of REES' ADDITION TO FRIDLEY PARK, Anoka County, Minnesota, accruing thereto by reason of street vacation.

And

That part of University Avenue East Service Drive NE, formerly known as University Avenue, as created and dedicated in the plat of FRIDLEY PLAZA CENTER, Anoka County, Minnesota, accruing thereto by reason of street vacation.

And

That part of vacated University Avenue East Service Drive, formerly known as University Avenue and 6th Avenue, as created and dedicated in the plat of REES' ADDITION TO FRIDLEY PARK, Anoka County, Minnesota, accruing thereto by reason of street vacation.

Has caused the same to be surveyed and platted as FRIDLEY SENIOR ADDITION and does hereby dedicate to the public for public use the drainage and utility easements as shown on this plat.

In witness whereof said The City of Fridley Housing and Redevelopment Authority, a public body, corporate and politic, has caused these presents to be signed by its proper officers this 14th day of June, 2019.

THE CITY OF FRIDLEY HOUSING AND REDEVELOPMENT AUTHORITY

William B. Holm
William B. Holm, Chairperson

Walter T. Wysopal
Walter T. Wysopal, Executive Director

STATE OF Minnesota
COUNTY OF Anoka

This instrument was acknowledged before me on 14th day of June 2019 by William B. Holm, Chairperson of The City of Fridley Housing and Redevelopment Authority, a public body, corporate and politic, on behalf of the corporation.

Julianne M. Beberg
William B. Holm (Signed)
Julianne M. Beberg (Printed)
Notary Public, Anoka County, Minnesota
My commission expires 1-31-2020

STATE OF Minnesota
COUNTY OF Anoka

This instrument was acknowledged before me on 14th day of June 2019 by Walter T. Wysopal, Executive Director of The City of Fridley Housing and Redevelopment Authority, a public body, corporate and politic, on behalf of the corporation.

Julianne M. Beberg (Signed)
Julianne M. Beberg (Printed)
Notary Public, Anoka County, Minnesota
My commission expires 1-31-2020

I Thomas R. Balluff do hereby certify that this plat was prepared by me or under my direct supervision; that I am a duly Licensed Land Surveyor in the State of Minnesota; that this plat is a correct representation of the boundary survey; that all mathematical data and labels are correctly designated on this plat; that all monuments depicted on this plat have been, or will be correctly set within one year; that all water boundaries and wet lands, as defined in Minnesota Statutes, Section 505.01, Subd. 3, as of the date of this certificate are shown and labeled on this plat; and all public ways are shown and labeled on this plat.

Dated this 23rd day of MAY, 2019.

Thomas R. Balluff
Thomas R. Balluff, Licensed Land Surveyor
Minnesota License No. 40361

STATE OF Minnesota
COUNTY OF Anoka

This instrument was acknowledged before me on May 23rd, 2019 by Thomas R. Balluff.

Cynthia J. Morical (Signed)
Cynthia J. Morical (Printed)
Notary Public, Hennepin County, Minnesota
My commission expires January 31, 2020

CITY COUNCIL, CITY OF FRIDLEY, MINNESOTA

This plat of FRIDLEY SENIOR ADDITION was approved and accepted by the City Council of the City of Fridley, Minnesota at a regular meeting thereof held this 28th day of May, 2019, and said plat is in compliance with the provisions of Minnesota Statutes, Section 505.03, Subd. 2.

CITY COUNCIL, CITY OF FRIDLEY, MINNESOTA

By: Scott F. Lund, Mayor
By: Debra Bergner, Clerk

COUNTY SURVEYOR

I hereby certify that in accordance with Minnesota Statutes, Section 505.021, Subd. 11, this plat has been reviewed and approved this 14th day of June, 2019.

By: Charles F. Gitzen
Charles F. Gitzen
Anoka County Surveyor

COUNTY AUDITOR/TREASURER

Pursuant to Minnesota Statutes, Section 505.021, Subd. 9, taxes payable in the year 2019 on the land hereinbefore described have been paid. Also, pursuant to Minnesota Statutes, Section 272.12, there are no delinquent taxes and transfer entered this 14th day of June, 2019.

Jonell M. Sawyer
Property Tax Administrator
By: Wally, Deputy

COUNTY RECORDER/REGISTRAR OF TITLES

County of Anoka, State of Minnesota

I hereby certify that this plat of FRIDLEY SENIOR ADDITION was filed in the office of the County Recorder/Registrar of Titles for public record on this 14th day of June, 2019, at 2:24 o'clock P.M. and was duly recorded as Document Number 2229374.002.

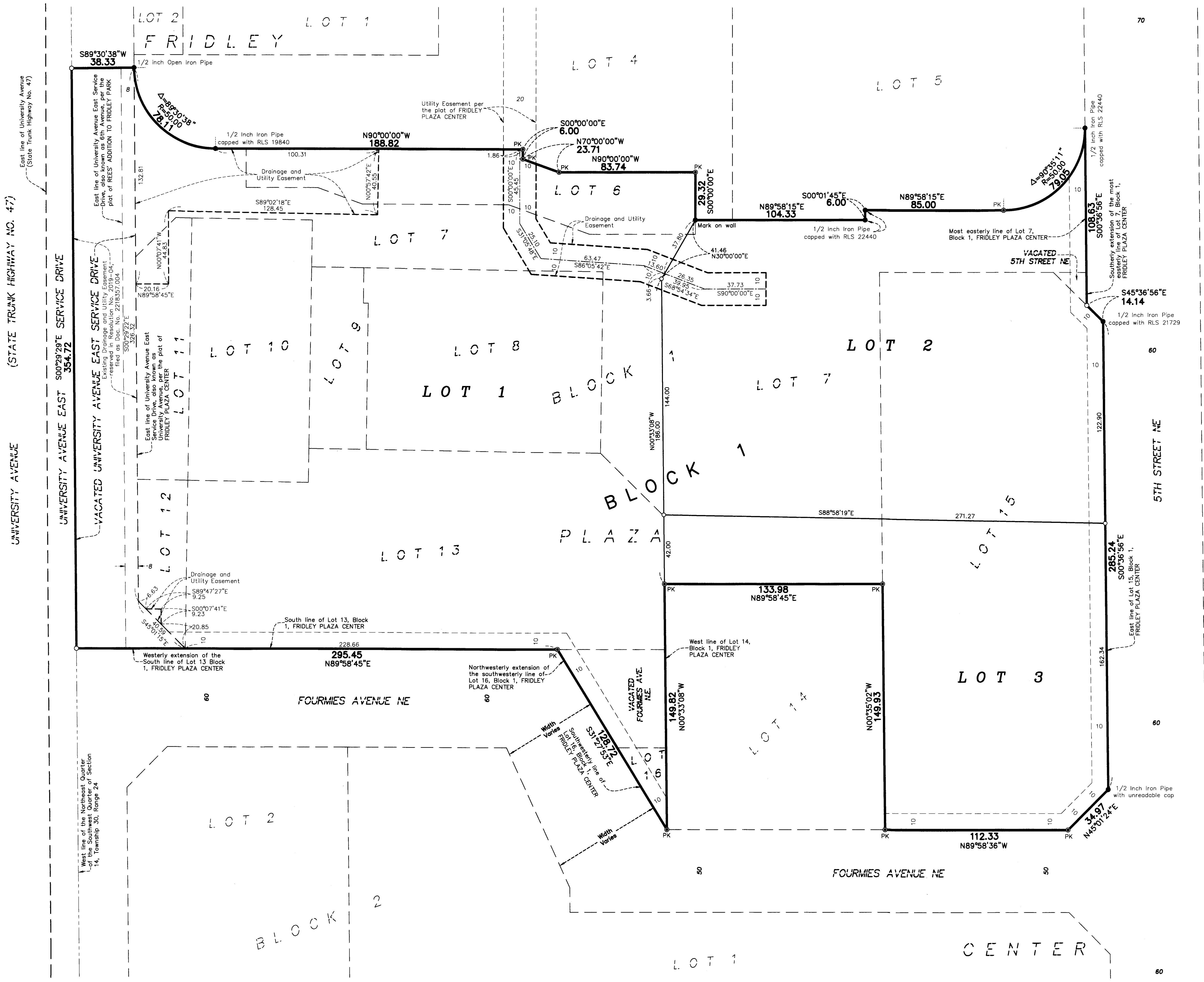
Jonell M. Sawyer
County Recorder/Registrar of Titles
By: Wally, Deputy



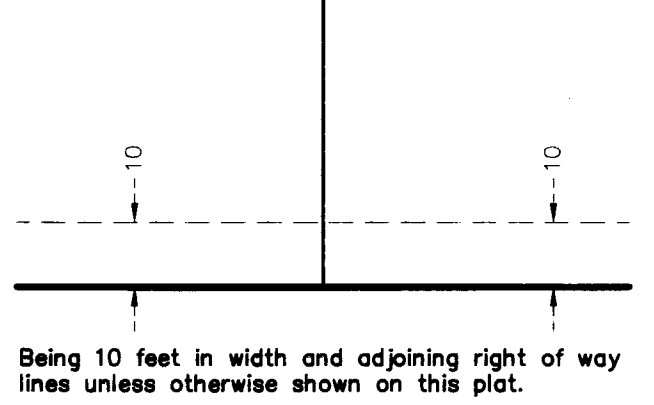
#2600

FRIDLLEY SENIOR ADDITION

CITY OF FRIDLLEY
COUNTY OF ANOKA
SEC. 14, TWP. 30, RGE. 24



DRAINAGE AND UTILITY EASEMENTS ARE SHOWN THUS:



For the purposes of this plat, West line of the Northeast Quarter of the Southwest Quarter of Section 14, Township 30, Range 24 is assumed to have a bearing of South 00 degrees 29 minutes 29 seconds East.

- Denotes 5/8 inch by 14 inch Rebar, set or to be set within one year of recording of this plat and marked with license number 40361
- Denotes Found Iron Monument, as noted
- PK Denotes Found PK Nail

