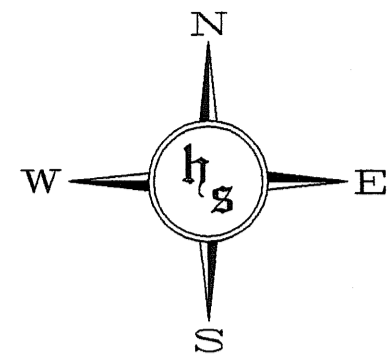


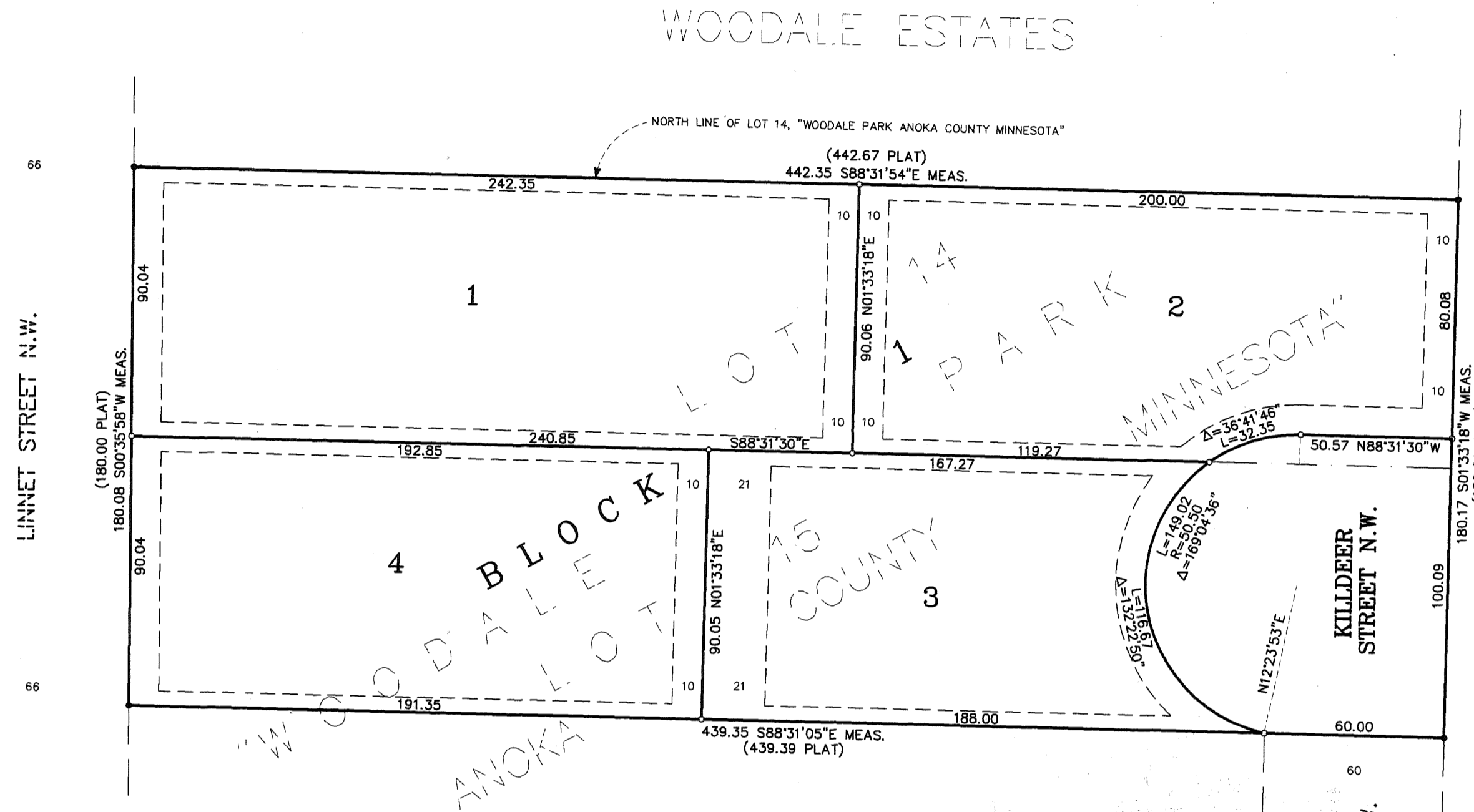
CITY OF COON RAPIDS
COUNTY OF ANOKA
SECTION 22, TOWNSHIP 31, RANGE 24.

FRONT PORCH ADDITION



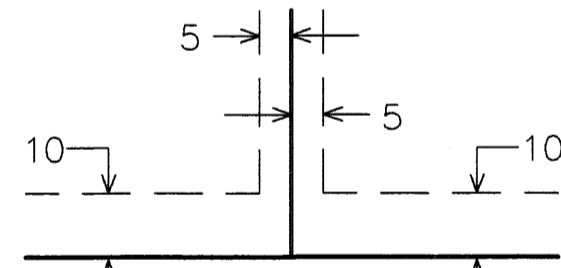
0 40 80 120
SCALE: 1 INCH = 40 FEET

"WOODDALE PARK
ANOKA COUNTY MINNESOTA"



REVISED AUDITORS
SUBDIVISION NO. 75

DRAINAGE AND UTILITY EASEMENTS SHOWN THUS:



BEING 10 FEET IN WIDTH AND ADJOINING
RIGHT-OF-WAY LINES, AND BEING 5 FEET
IN WIDTH AND ADJOINING LOT LINES, UNLESS
OTHERWISE SHOWN ON THE PLAT.

- 180.00 (PLAT) - DENOTES PLAT OF "WOODDALE PARK, ANOKA COUNTY, MINNESOTA".
- - DENOTES 1/2 INCH BY 14 INCH IRON PIPE MONUMENT SET AND MARKED WITH A PLASTIC CAP INSCRIBED "RLS 20262".
- - DENOTES IRON MONUMENT FOUND

FOR THE PURPOSES OF THIS PLAT THE NORTH LINE OF LOT 14, "WOODDALE PARK ANOKA COUNTY MINNESOTA" HAS AN ASSUMED BEARING OF S88°31'54"E.

State of Minnesota
County of Hennepin
The foregoing instrument was acknowledged before me this 11th day of September, 2006, by Milton E. Hyland, Licensed Land Surveyor.

RUTHANNE MARY HYLAND
Notary Public-Minnesota
My Commission Expires Jan 31, 2010

Ruthanne Mary Hyland
Notary Public, Hennepin County, Minnesota
My Commission Expires January 31, 2010

The plat of FRONT PORCH ADDITION was approved by the Planning and Zoning Commission of Coon Rapids at a regular meeting thereof held this 20 day of April, 2006.

By: Dorina M. Naewe
Chairman

By: _____
Secretary

This plat of FRONT PORCH ADDITION was approved and accepted by the City Council of Coon Rapids, Minnesota, at a regular meeting thereof held this 5th day of September, 2006. If applicable, the written comments and recommendations of the Commissioner of Transportation and the County Highway Engineer have been received by the City of the prescribed 30 day period has elapsed without receipt of such comments and recommendations, as provided by Minn. Statutes Section 505.03 Subd. 2.

F. Agre
Mayor

Tom Anderson
Clerk

Checked and approved this 6TH day of DECEMBER, 2006.

Larry Hoium
Anoka County Surveyor

489937.001 TORNAS
COUNTY OF ANOKA
NOTARY PUBLIC - MINNESOTA
My Commission Expires 1-31-2010

KNOW ALL MEN BY THESE PRESENTS: That Front Porch Properties, LLC., a Minnesota limited liability company, owner, and Mainstreet Bank, a Minnesota corporation, mortgagee, of the following described property situated in the County of Anoka, State of Minnesota, to-wit:

Lot 15, "WOODDALE PARK, ANOKA COUNTY, MINNESOTA", according to the duly recorded plat thereof.

That Jay D. Friedman, single, owner and First Franklin Financial Corporation, a DELAWARE corporation, mortgagee, of the following described property situated in the County of Anoka, State of Minnesota, to-wit:

Lot 14, "WOODDALE PARK, ANOKA COUNTY, MINNESOTA", according to the duly recorded plat thereof.

Have caused the same to be surveyed and platted as FRONT PORCH ADDITION and do hereby donate and dedicate to the public for public use forever the street and easements for drainage and utility purposes as shown on the plat. In witness whereof said Jay D. Friedman, single, has hereunto set his hand this 7 day of November, 2006. In witness whereof said Front Porch Properties, LLC., a Minnesota limited liability company, has caused these presents to be signed by its proper officer, this 13 day of November, 2006. In witness whereof Mainstreet Bank, a Minnesota corporation, has caused these presents to be signed by its proper officers, this 13 day of November, 2006. In witness whereof First Franklin Financial Corporation, a DELAWARE corporation, has caused these presents to be signed by its proper officer, this 30 day of NOVEMBER, 2006.

Signed:
Jay D. Friedman
Jay D. Friedman

FRONT PORCH PROPERTIES, LLC
James H. Hoag
James H. Hoag as Chief Manager

MAINSTREET BANK
Robert P. Deke
as Assistant V.P.

FIRST FRANKLIN FINANCIAL CORPORATION
Gregory J. P. O'Connell
as Assistant V.P.

State of Minnesota
County of Anoka
The foregoing instrument was acknowledged before me this 11 day of November, 2006, by Jay D. Friedman, single.

DOUGLAS K. WHITNEY
NOTARY PUBLIC - MINNESOTA
My Commission Expires 1-31-2010

Douglas K. Whitney
Notary Public, Anoka County, Minnesota
My commission expires Jan 31, 2010

State of Minnesota
County of Dakota
The foregoing instrument was acknowledged before me this 13 day of November, 2006, by James H. Hoag as Chief Manager of Front Porch Properties, LLC., a Minnesota limited liability company, on behalf of the company.

NANCY A. STANTON
Notary Public-Minnesota
My Commission Expires Jan 31, 2008

Nancy A. Stanton
Notary Public, Dakota County, Minnesota
My commission expires Jan 31, 2008

State of Minnesota
County of Dakota
The foregoing instrument was acknowledged before me this 13 day of November, 2006, by Robert P. Deke as Assistant V.P. and Gregory J. P. O'Connell as Assistant V.P. of Mainstreet Bank, a Minnesota corporation, on behalf of said corporation.

Notary Seal

Julie Kirk
Notary Public, Dakota County, Minnesota
My commission expires Jan 2010

State of Pennsylvania
County of Allegheny
The foregoing instrument was acknowledged before me this 30 day of November, 2006, by Gregory S. Fedoruk as Assistant V.P. and _____ as _____ of First Franklin Financial Corporation, a DELAWARE corporation, on behalf of said corporation.

COMMONWEALTH OF PENNSYLVANIA
Notary Seal
Kassey M. Stenen, Notary Public
City of Pittsburgh, Allegheny County
My Commission Expires Oct. 26, 2009

Kassey M. Stenen
Notary Public, Allegheny County, Pennsylvania
My commission expires October 26, 2009

I hereby certify that the client and delinquent taxes on the lands described within are paid and the taxes are shown on the plat; that the outside boundary lines are correctly designated on said plat; and that there are no wetlands as defined in MS505.02 Sub. 1 or public highways to be designated on said plat other than as shown thereon.

I HEREBY CERTIFY THAT THE CLIENT AND DELINQUENT TAXES ON THE LANDS DESCRIBED WITHIN ARE PAID AND THE TAXES ARE SHOWN ON THE PLAT.
December 6, 2006
LARRY HOIUM
ANOKA COUNTY SURVEYOR

Milton E. Hyland
Milton E. Hyland, Licensed Land Surveyor
Minnesota License No. 20262

HY-LAND SURVEYING, P.A.
LAND SURVEYORS

\$56.00