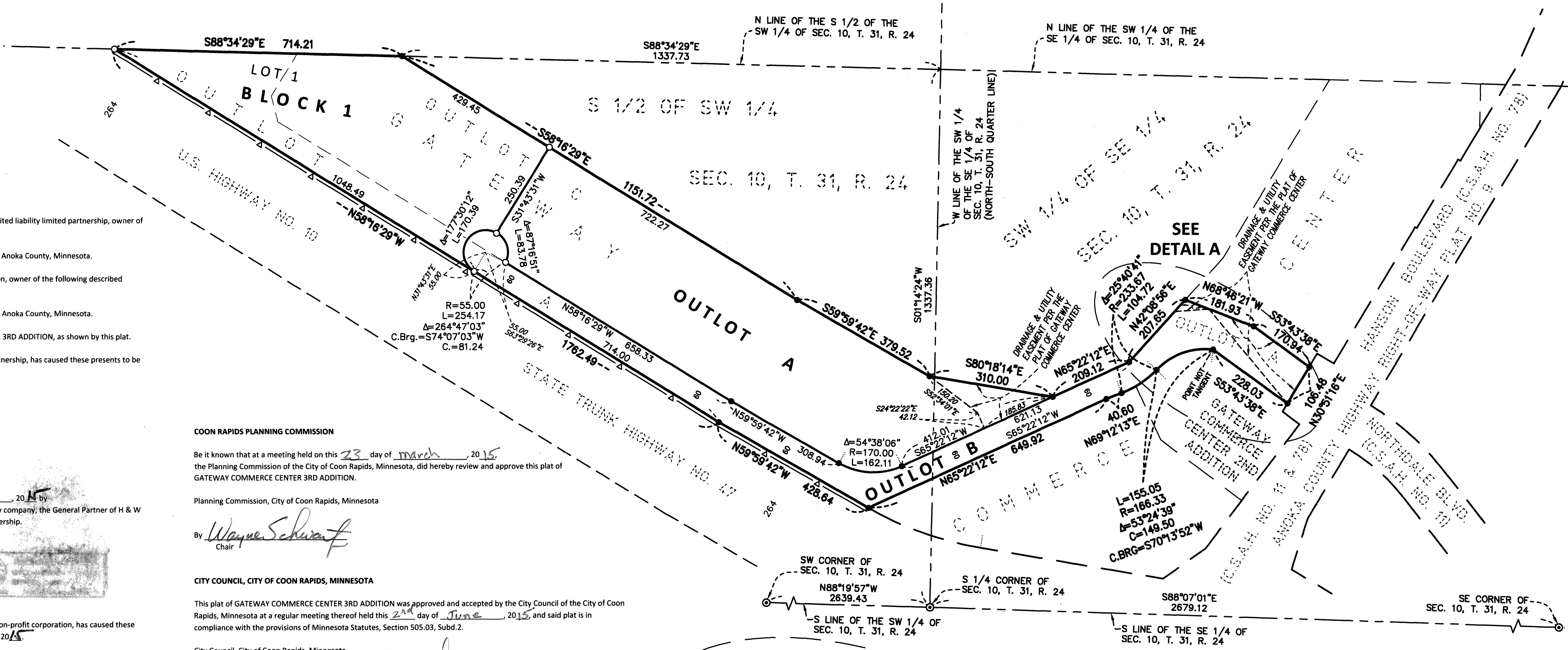


GATEWAY COMMERCE CENTER 3RD ADDITION



KNOW ALL PERSONS BY THESE PRESENTS: That H & W Family, LLLP, a Minnesota limited liability limited partnership, owner of the following described property:

Outlot C, GATEWAY COMMERCE CENTER, according to the recorded plat thereof, Anoka County, Minnesota.

And Gateway Commerce Center Association, Inc., a Minnesota non-profit corporation, owner of the following described property:

Outlot A, GATEWAY COMMERCE CENTER, according to the recorded plat thereof, Anoka County, Minnesota.

Have caused the same to be surveyed and platted as GATEWAY COMMERCE CENTER 3RD ADDITION, as shown by this plat.

In witness whereof said H & W Family, LLLP, a Minnesota limited liability limited partnership, has caused these presents to be signed by its proper officer this 15th day of JUNE, 2015.

SIGNED: H & W Family, LLLP
By: William O. Cooley, as Chief Manager

STATE OF FLORIDA
COUNTY OF PALM BEACH

This instrument was acknowledged before me this 15th day of JUNE, 2015 by William O. Cooley, as Chief Manager of H & W Holding, LLC, a Nevada limited liability company, the General Partner of H & W Family, LLLP, a Minnesota limited liability limited partnership, on behalf of the partnership.

Michael Kramer
Michael Kramer
Notary Public, Palm Beach County, Florida
My Commission Expires Oct. 21, 2017

In witness whereof said Gateway Commerce Center Association, Inc., a Minnesota non-profit corporation, has caused these presents to be signed by its proper officer this 15th day of JUNE, 2015.

SIGNED: Gateway Commerce Center Association, Inc.

By: William O. Cooley
William O. Cooley

STATE OF FLORIDA
COUNTY OF PALM BEACH

This instrument was acknowledged before me this 15th day of JUNE, 2015 by William O. Cooley as PRESIDENT of Gateway Commerce Center Association, Inc., a Minnesota non-profit corporation, on behalf of the corporation.

Michael Kramer
Michael Kramer
Notary Public, Palm Beach County, Florida
My Commission Expires Oct. 21, 2017

I, Rick M. Blom do hereby certify that this plat was prepared by me or under my direct supervision; that I am a duly Licensed Land Surveyor in the State of Minnesota; that this plat is a correct representation of the boundary survey; that all mathematical data and labels are correctly designated on this plat; that all monuments depicted on this plat have been, or will be correctly set within one year; that all water boundaries and wet lands, as defined in Minnesota Statutes, Section 505.01, Subd. 3, as of the date of this certificate are shown and labeled on this plat; and all public ways are shown and labeled on this plat.

Dated this 9th day of JUNE, 2015

Rick M. Blom
Rick M. Blom, Licensed Land Surveyor
Minnesota License No. 21729

STATE OF MINNESOTA
COUNTY OF Hennepin

This instrument was acknowledged before me this 9th day of JUNE, 2015 by Rick M. Blom.

Julie Saback
Julie Saback
Notary Public, Hennepin County, Minnesota
My Commission Expires January 31, 2019

COON RAPIDS PLANNING COMMISSION
Be it known that at a meeting held on this 23 day of March, 2015, the Planning Commission of the City of Coon Rapids, Minnesota, did hereby review and approve this plat of GATEWAY COMMERCE CENTER 3RD ADDITION.

Planning Commission, City of Coon Rapids, Minnesota

By: Wayne Schwanf
Chair

CITY COUNCIL, CITY OF COON RAPIDS, MINNESOTA
This plat of GATEWAY COMMERCE CENTER 3RD ADDITION was approved and accepted by the City Council of the City of Coon Rapids, Minnesota at a regular meeting thereof held this 24 day of June, 2015 and said plat is in compliance with the provisions of Minnesota Statutes, Section 505.03, Subd. 2.

City Council, City of Coon Rapids, Minnesota
By: Jon K... Mayor
By: Jan L... Clerk

COUNTY SURVEYOR
I hereby certify that in accordance with Minnesota Statutes, Section 505.021, Subd. 11, this plat has been reviewed and approved this 26th day of JUNE, 2015.

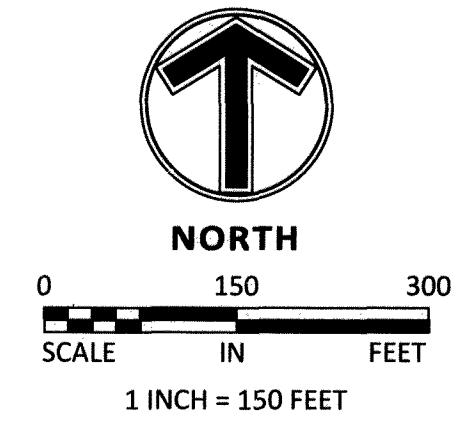
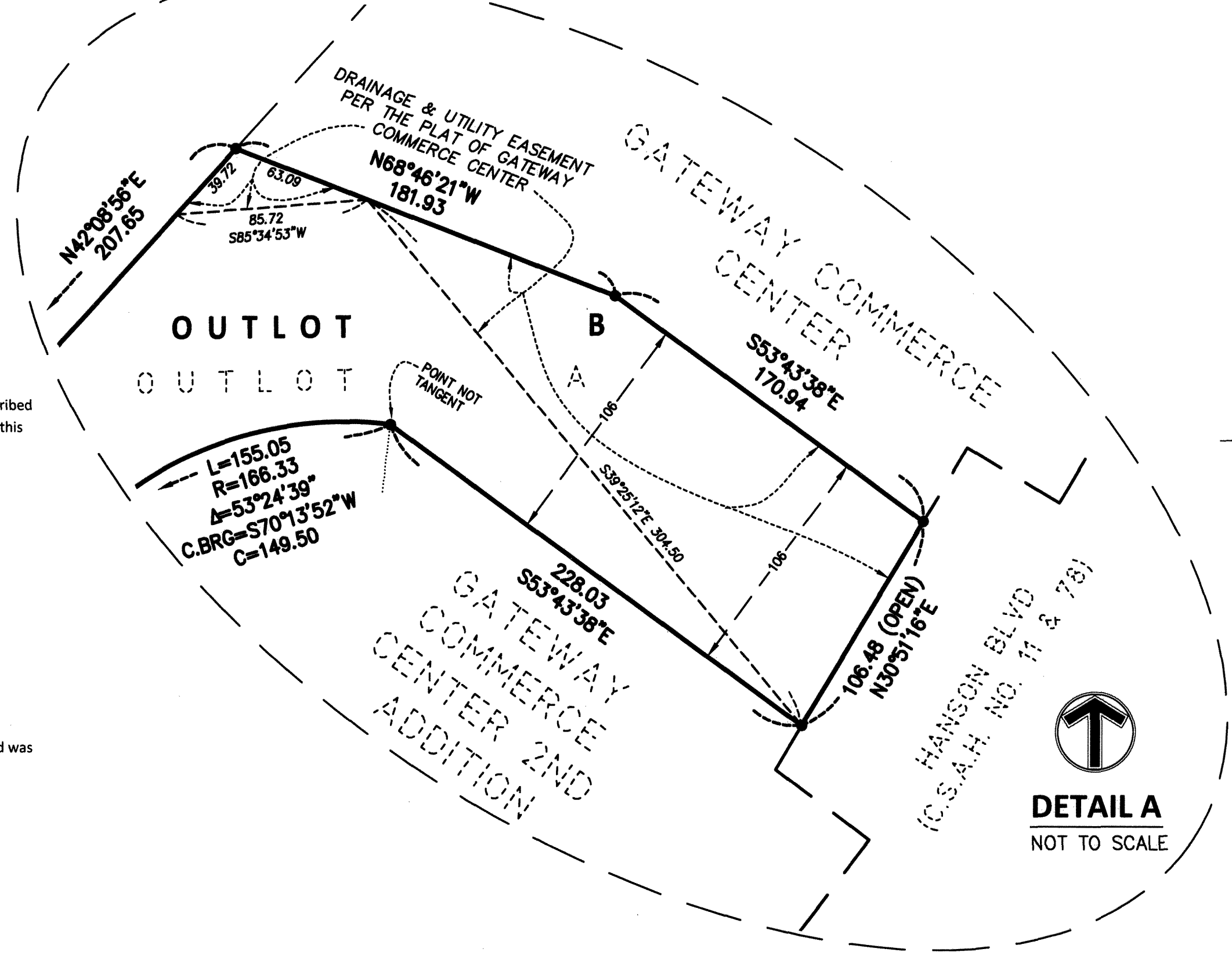
By: Larry D. Holum
Larry D. Holum, Anoka County Surveyor

COUNTY AUDITOR/TREASURER
Pursuant to Minnesota Statutes, Section 505.021, Subd. 9, taxes payable in the year 2015 on the land hereinbefore described have been paid. Also, pursuant to Minnesota Statutes, Section 272.12, there are no delinquent taxes and transfer entered this 26 day of JUNE, 2015.

Jonell M. Sawyer
Property Tax Administrator
By: Deputy Deputy

COUNTY RECORDER/REGISTRAR OF TITLES
COUNTY OF ANOKA, STATE OF MINNESOTA
I hereby certify that this plat of GATEWAY COMMERCE CENTER 3RD ADDITION was filed in the office of the County Recorder/Registrar of Titles for public record on this 26 day of JUNE, 2015 at 3:16 o'clock P.M. and was duly recorded in Book 78 Page 23, as Document Number 211658-002.

Jonell M. Sawyer
County Recorder/Registrar of Titles
By: Deputy Deputy



- ▲— DENOTES RIGHT OF ACCESS DEDICATED TO THE STATE OF MINNESOTA AND THE COUNTY OF ANOKA PER THE PLAT OF GATEWAY COMMERCE CENTER
- ⊙ DENOTES CAST IRON MONUMENT FOUND
- DENOTES 1/2 INCH BY 14 INCH IRON MONUMENT SET AND MARKED BY LICENSE NO. 21729.
- DENOTES 1/2 INCH IRON MONUMENT FOUND.

THE SOUTH LINE OF THE SOUTHEAST QUARTER OF SECTION 10, TOWNSHIP 31, RANGE 24 IS ASSUMED TO HAVE A BEARING OF SOUTH 88 DEGREES 07 MINUTES 01 SECONDS EAST.

DETAIL A
NOT TO SCALE