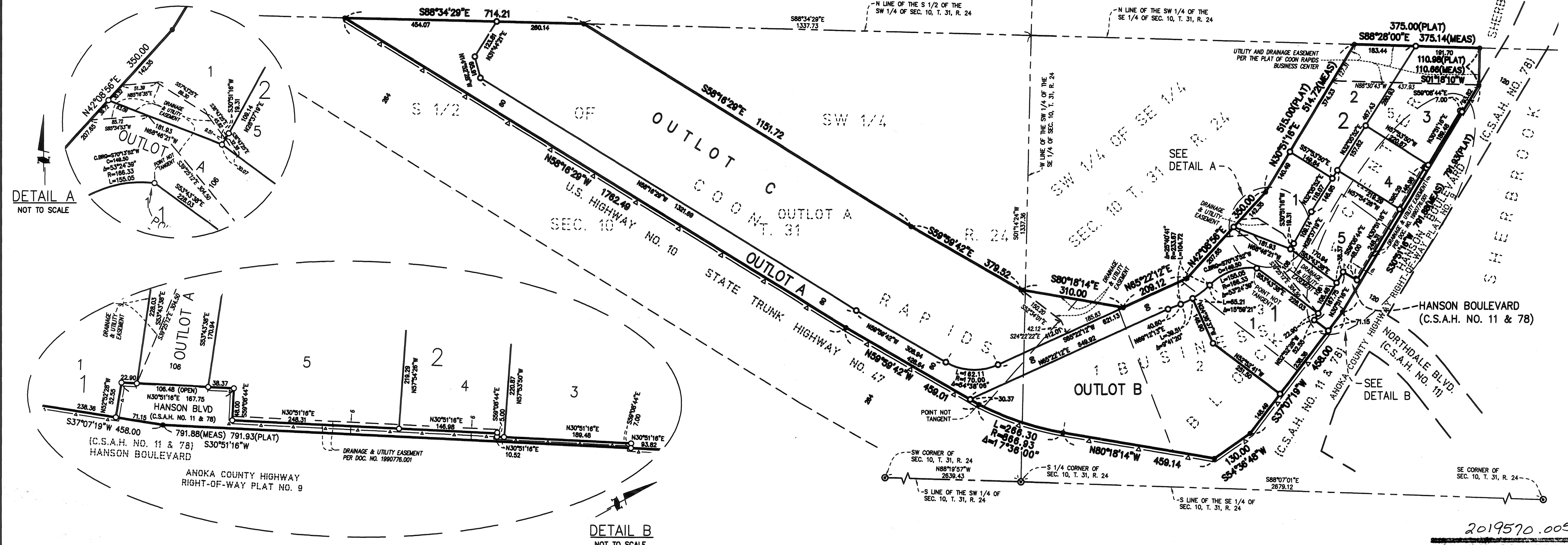


GATEWAY COMMERCE CENTER

CITY OF COON RAPIDS
COUNTY OF ANOKA, MINNESOTA
SEC. 10, TWP. 31, R. 24



DETAIL A
NOT TO SCALE

DETAIL B
NOT TO SCALE

KNOW ALL PERSONS BY THESE PRESENTS: That H & W Family, LLLP, a Minnesota limited liability partnership, fee owner of the following described property situated in the County of Anoka, State of Minnesota to wit:

Lots 1, 2, 3, 4, & 5, Block 1, and Outlot A, COON RAPIDS BUSINESS CENTER, according to the recorded plat thereof, Anoka County, Minnesota.

Have caused the same to be surveyed and platted as GATEWAY COMMERCE CENTER and do hereby donate and dedicate to the public for public use forever the public way and the easements for drainage and utility purposes as shown on this plat. Also dedicating to the State of Minnesota the right of access onto U.S. Highway No. 10 as shown on this plat. Also dedicating to the County of Anoka the right of access onto County State Aid Highway No. 11 and County State Aid Highway No. 78 as shown on this plat.

In witness whereof said H & W Family, LLLP, a Minnesota limited liability partnership, has caused these presents to be signed by its proper officer this 16th day of December, 2010.

SIGNED: H & W Family, LLLP
BY: H & W Holding, LLC

By: William O. Cooley
William O. Cooley, as Chief Manager

STATE OF FLORIDA
COUNTY OF Palm Beach

This instrument was acknowledged before me this 11th day of December, 2010 by William O. Cooley, as Chief Manager of H & W Holding, LLC, a Minnesota limited liability company, the General Partner of H & W Family, LLLP, a Minnesota limited liability partnership, on behalf of the partnership.

Brooke A Walker
Notary Printed Name

Drake D. Walker
Notary Public, DUNEDIN County, Palm Beach
My Commission Expires January 04, 2014

I hereby certify that I have surveyed and platted the property described on this plat as GATEWAY COMMERCE CENTER; that this plat is a correct representation of the boundary survey; that all mathematical data and labels are correctly designated on this plat; that all monuments depicted on this plat have been, or will be correctly set within one year; that all water boundaries and wet lands, as defined in Minnesota Statutes, Section 505.01, Subd. 3, as of the date of this certification are shown and labeled on this plat; and that all public ways are shown and labeled on this plat.

Dated this 15 day of December, 2010

Marcus F. Hampton
Marcus F. Hampton, Licensed Land Surveyor, Minnesota License No. 47481

STATE OF MINNESOTA
COUNTY OF DULUTH

This instrument was acknowledged before me this 15th day of December, 2010, by Marcus F. Hampton.

Quilla Carolyn Bell
Notary Public, DULUTH County, Minnesota
My Commission Expires January 31, 2011

Jessica Carolyn Bell
Notary Printed Name

CITY COUNCIL, CITY OF COON RAPIDS, MINNESOTA

This plat of GATEWAY COMMERCE CENTER was approved and accepted by the City Council of the City of Coon Rapids, Minnesota, at a regular meeting thereof held this 7 day of December, 2010, and said plat is in compliance with the provisions of Minnesota Statutes, Section 505.03, Subd. 2.

By: David Schultz, Mayor

By: Jonah Anderson, Clerk

COON RAPIDS PLANNING COMMISSION

Be it known that at a meeting held on this 15 day of November, 2007, the Planning Commission of the City of Coon Rapids, Minnesota, did hereby APPROVE this plat of GATEWAY COMMERCE CENTER.

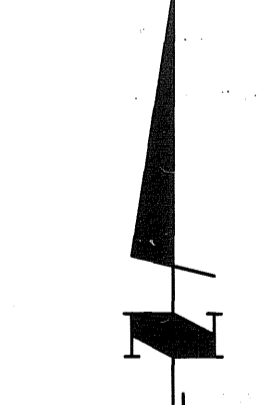
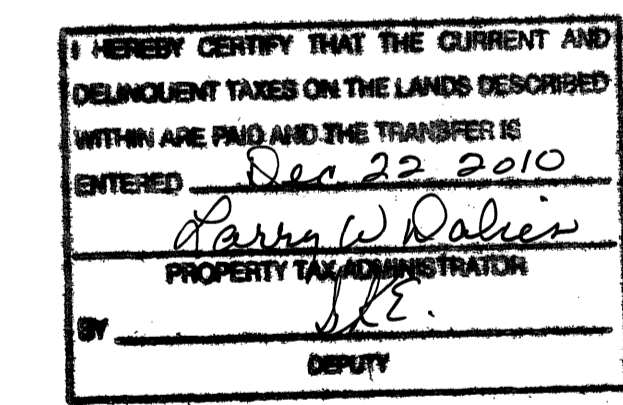
Planning Commission, City of Coon Rapids, Minnesota

By: Doreen M. Naev, Chairman

COUNTY SURVEYOR

I hereby certify that in accordance with Minnesota Statutes, Section 505.021, Subd. 11, this plat has been reviewed and approved this 22nd day of DECEMBER, 2010.

By: Larry D. Heitum
Larry D. Heitum, Anoka County Surveyor



2019570.005

Office of RECORDER/REGISTRAR
OF TITLES

STATE OF MINNESOTA COUNTY OF ANOKA

I hereby certify that the within instrument was filed in

the office for record on the 22 day of

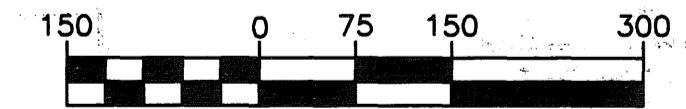
Dec 2010 at 3:57 o'clock P.M.

and was duly recorded in book 75 Abst page

10

By: Larry W. Dales
Recorder/Registrar of Titles

By: Rcm
Clerk



SCALE IN FEET
1 INCH=150 FEET

—▲— DENOTES RIGHT OF ACCESS DEDICATED TO THE STATE OF MINNESOTA AND THE COUNTY OF ANOKA

○ DENOTES 1/2 INCH BY 14 INCH IRON MONUMENT SET AND MARKED BY LICENSE NO. 47481.

● DENOTES 1/2 INCH IRON MONUMENT FOUND.

THE SOUTH LINE OF THE SOUTHEAST QUARTER OF SECTION 10, TOWNSHIP 31, RANGE 24 IS ASSUMED TO BEAR S88°07'01"E