

JOHN OLIVER & ASSOC. INC. LAND SURVEYORS Elk River, Minn.

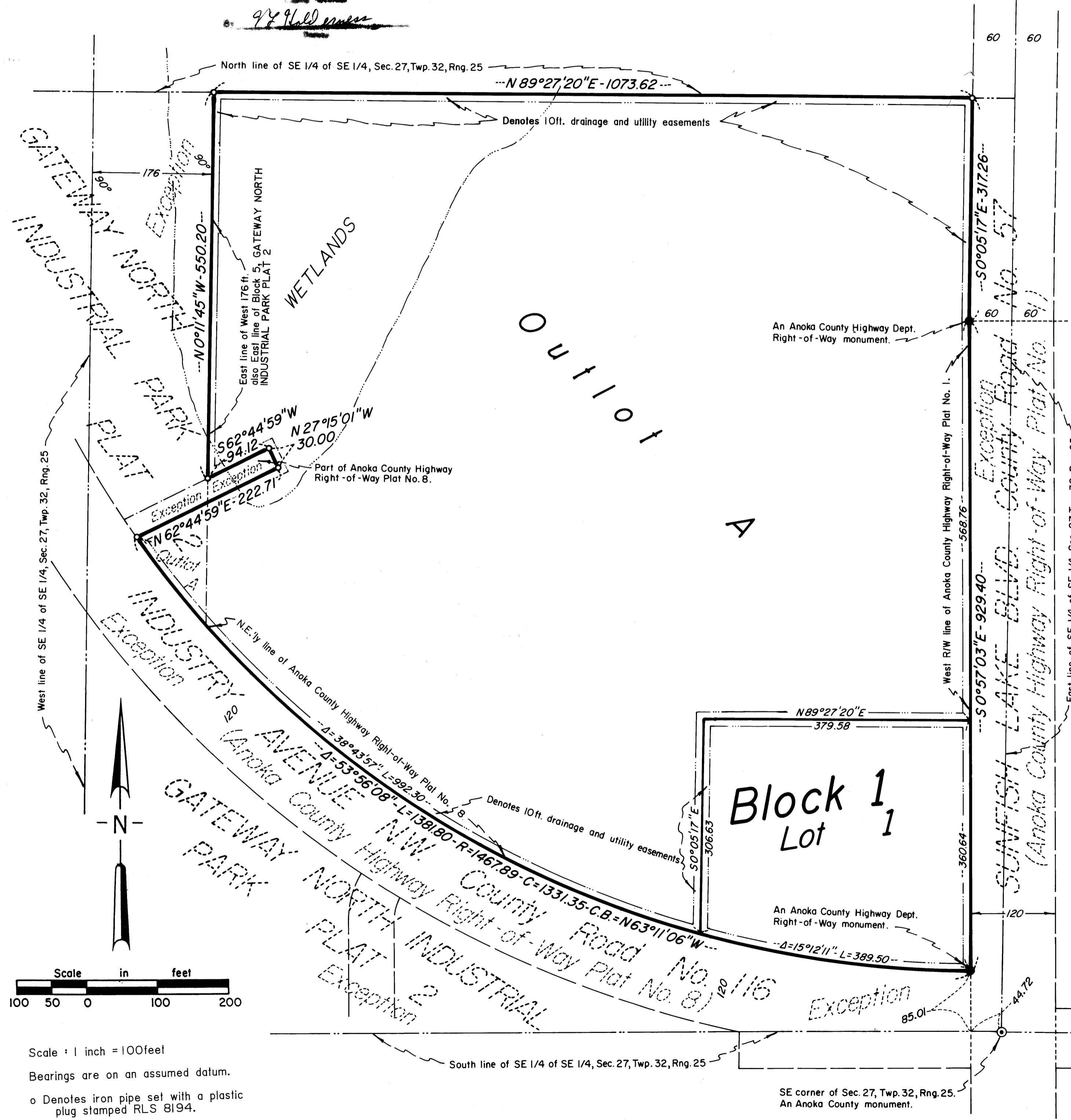
670442 OFFICE OF COUNTY RECORDER STATE OF MINNESOTA COUNTY OF ANOKA

GATEWAY NORTH INDUSTRIAL PARK PLAT 3

CITY OF RAMSEY, ANOKA COUNTY, MN.

THEREBY CERTIFY THAT THE TAXES PAYABLE IN THE YEAR 1985 ON THE LANDS DESCRIBED WITHIN ARE PAID

APRIL 4 85 Charles K. LeVine Raymond J. Hales



KNOW ALL MEN BY THESE PRESENTS: That Anoka Industrial Park, Inc., a Minnesota corporation, owner and proprietor of the following described property situated in the State of Minnesota, County of Anoka, to-wit:

Outlot A of the duly recorded plat of GATEWAY NORTH INDUSTRIAL PARK PLAT 2.

And that Anoka Industrial Park, Inc., a Minnesota corporation, owner and proprietor, and First National Bank in Anoka, a U.S. corporation, mortgagee of the following described property situated in the State of Minnesota, County of Anoka, to-wit:

The Southeast Quarter of the Southeast Quarter, Section 27, Township 32, Range 25. Excepting therefrom all that part thereof platted as GATEWAY NORTH INDUSTRIAL PARK PLAT 2; Also excepting therefrom all that part thereof platted as ANOKA COUNTY HIGHWAY RIGHT-OF-WAY PLAT NO. 8; Also excepting therefrom all that part thereof platted as ANOKA COUNTY HIGHWAY RIGHT-OF-WAY PLAT NO. 1.

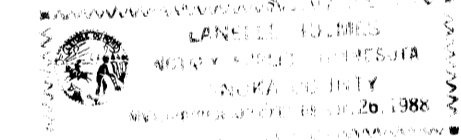
Have caused the same to be surveyed and platted as GATEWAY NORTH INDUSTRIAL PARK PLAT 3, and do hereby donate and dedicate to the public for the public use forever the easements as shown on this plat for drainage and utility purposes only.

By: [Signature] ANOKA INDUSTRIAL PARK, INC. Its: Pres. By: Donald M. Greenberg, Its: Vice Pres.

Also in witness whereof, said First National Bank in Anoka has caused these presents to be signed by its proper officers and its corporate seal to be hereunto affixed this 1st day of March, 1985.

By: William B. Bunker, Its: Pres. By: [Signature], Its: Asst. V.P.

State of Minnesota, County of Anoka. The foregoing instrument was acknowledged before me this 1st day of March, 1985 by Glenn A. Gruber, President and by Donald M. Greenberg, Vice President of Anoka Industrial Park, Inc., a Minnesota corporation, on behalf of the corporation.



Janelle Holmes, Notary Public, Anoka County, Minnesota. My commission expires: 4-26-88.

State of Minnesota, County of Anoka. The foregoing instrument was acknowledged before me this 1st day of March, 1985, by William B. Bunker, President and by G. Northagen, Asst. Vice President of First National Bank in Anoka, a U.S. corporation, on behalf of the corporation.



Janelle Holmes, Notary Public, Anoka County, Minnesota. My commission expires: 4-26-88.

I hereby certify that I have surveyed and platted the property described in this plat as GATEWAY NORTH INDUSTRIAL PARK PLAT 3 and that this plat is a correct representation of said survey; that all monuments have been correctly placed in the ground as shown on the plat; that all distances are correctly shown on the plat in feet and hundredths of a foot; that the outside boundary lines are correctly designated on the plat; and that there are no wet lands or public highways to be designated on the plat other than as shown thereon.

John O. Oliver, Land Surveyor, Minnesota Registration No. 8194

State of Minnesota, County of Sherburne. The foregoing instrument was acknowledged before me this 28th day of March, 1985, by John O. Oliver, Land Surveyor.

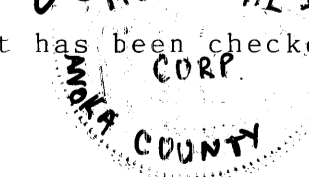


Pauline C. Hickman, Notary Public, Sherburne County, Minnesota. My commission expires: 6/12/90.

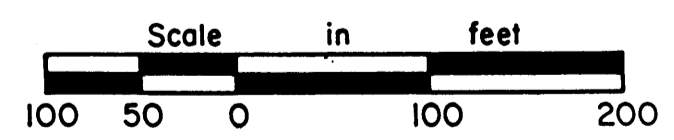
Annexed plat of GATEWAY NORTH INDUSTRIAL PARK PLAT 3 was approved by the City Council of Ramsey, Minnesota at a regular meeting thereof held this 26th day of March, 1985.

By: Gary W. Westman, Mayor. Attest: [Signature], Clerk

This plat has been checked and approved this 28th day of March, 1985.



Robert W. Anderson, Anoka County Surveyor



Scale: 1 inch = 100 feet. Bearings are on an assumed datum. Denotes iron pipe set with a plastic plug stamped RLS 8194.