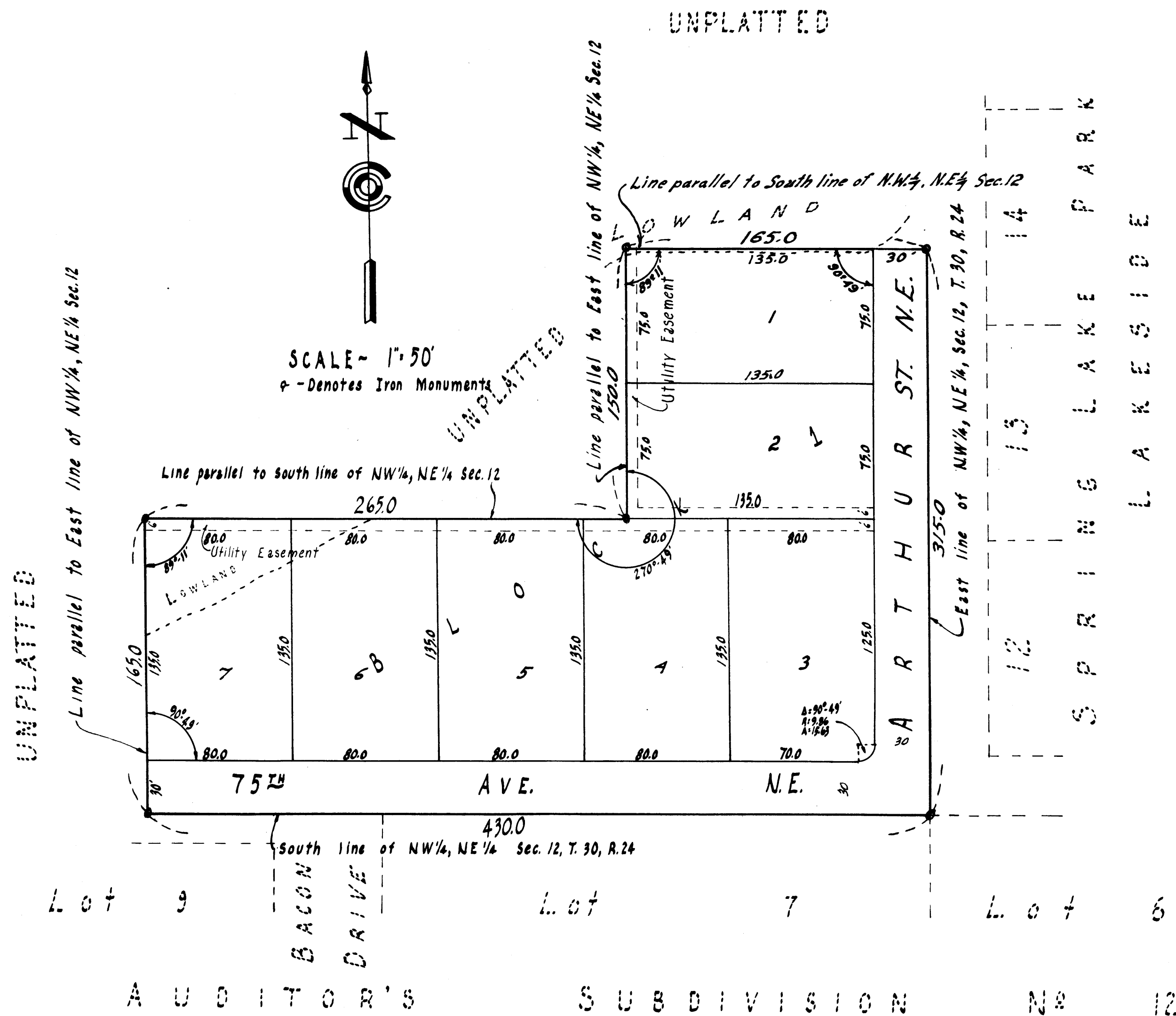


GIDEO'S FIRST ADDITION

CITY OF FRIDLEY
ANOKA COUNTY, MINNESOTA

CARTWRIGHT & OLSON
LAND SURVEYORS



KNOW ALL MEN BY THESE PRESENTS: THAT WE, MICHAEL L. GIDEO AND EVELYN L. GIDEO, HIS WIFE, OWNERS AND PROPRIETORS OF THE FOLLOWING DESCRIBED PROPERTY SITUATE IN THE COUNTY OF ANOKA AND STATE OF MINNESOTA, TO-WIT: THAT PART OF THE SOUTH 551 FEET OF THE NORTHWEST 1/4 OF THE NORTHEAST 1/4 OF SECTION 12, TOWNSHIP 30, RANGE 24, EXCEPT THE NORTH 5 ACRES THEREOF, DESCRIBED AS FOLLOWS: COMMENCING AT THE SOUTHEAST CORNER OF SAID NORTHWEST 1/4 OF NORTHEAST 1/4; THENCE NORTH ALONG THE EAST LINE OF SAID NORTHWEST 1/4 OF NORTHEAST 1/4 A DISTANCE OF 315 FEET; THENCE WEST PARALLEL WITH THE SOUTH LINE OF SAID NORTHWEST 1/4 OF NORTHEAST 1/4 A DISTANCE OF 165 FEET; THENCE SOUTH PARALLEL WITH THE EAST LINE OF SAID NORTHWEST 1/4 OF NORTHEAST 1/4 A DISTANCE OF 150 FEET; THENCE WEST PARALLEL WITH THE SOUTH LINE OF SAID NORTHWEST 1/4 OF NORTHEAST 1/4 A DISTANCE OF 265 FEET; THENCE SOUTH PARALLEL WITH THE EAST LINE OF SAID NORTHWEST 1/4 OF NORTHEAST 1/4 A DISTANCE OF 165 FEET TO THE SOUTH LINE OF SAID NORTHWEST 1/4 OF NORTHEAST 1/4; THENCE EAST ALONG THE SOUTH LINE OF SAID NORTHWEST 1/4 OF NORTHEAST 1/4 A DISTANCE OF 430 FEET TO POINT OF BEGINNING. HAVE CAUSED THE SAME TO BE SURVEYED AND PLATTED AS GIDEO'S FIRST ADDITION AND DO HEREBY DONATE AND DEDICATE TO THE PUBLIC FOR PUBLIC USE FOREVER THE STREET AND AVENUE AS SHOWN ON THE ANNEXED PLAT, ALSO SUBJECT TO UTILITY EASEMENTS AS SHOWN ON SAID PLAT. IN WITNESS WHEREOF WE HAVE HEREUNTO SET OUR HANDS AND SEALS ON THIS 12 DAY OF Aug A.D., 1958.

IN PRESENCE OF: Robert S. Aldrich AND Robert S. Aldrich SIGNED: Michael L. Gideo
A. M. Blasen AND Reemaria Nelson Evelyn L. Gideo

STATE OF MINNESOTA) ss
COUNTY OF ANOKA)
ON THIS 12 DAY OF Aug A.D., 1958, BEFORE ME, A NOTARY PUBLIC, WITHIN AND FOR SAID COUNTY AND STATE PERSONALLY APPEARED MICHAEL L. GIDEO AND EVELYN L. GIDEO, HIS WIFE, TO ME KNOWN TO BE THE PERSONS DESCRIBED IN AND WHO EXECUTED THE FOREGOING INSTRUMENT AND THEY AFFIRM AND ACKNOWLEDGE THAT THEY EXECUTED THE SAME AS THEIR OWN FREE ACT AND DEED.

Marvin C. Brunell
NOTARY PUBLIC, ANOKA COUNTY, MINNESOTA
MY COMMISSION EXPIRES Dec 26, 1964

I HEREBY CERTIFY THAT I HAVE SURVEYED AND PLATTED THE LAND DESCRIBED IN THE DEDICATION ON THIS PLAT AS GIDEO'S FIRST ADDITION; THAT THIS PLAT IS A CORRECT REPRESENTATION OF SAID SURVEY; THAT ALL DISTANCES ARE CORRECTLY SHOWN ON SAID PLAT IN FIGURES DENOTING FEET AND DECIMALS OF A FOOT; THAT THE MONUMENTS FOR THE GUIDANCE OF FUTURE SURVEYS HAVE BEEN CORRECTLY PLACED IN THE GROUND AS SHOWN ON SAID PLAT; THAT THE TOPOGRAPHY OF THE LAND IS CORRECTLY SHOWN ON SAID PLAT; THAT THE OUTSIDE BOUNDARIES OF THE LAND ARE CORRECTLY DESIGNATED ON SAID PLAT; AND THAT THERE ARE NO NET LANDS OR PUBLIC HIGHWAYS TO BE DESIGNATED ON SAID PLAT OTHER THAN ARE SHOWN THEREON.
Gary C. Cartwright
REGISTERED LAND SURVEYOR, MINN. REG. NO. 1983

STATE OF MINNESOTA) ss
COUNTY OF HENNEPIN)
ABOVE CERTIFICATE SUBSCRIBED AND SWORN TO BEFORE ME, A NOTARY PUBLIC WITHIN AND FOR SAID COUNTY AND STATE, ON THIS 7th DAY OF August A.D., 1958.
Norman C. Houm
NOTARY PUBLIC, HENNEPIN COUNTY, MINNESOTA
MY COMMISSION EXPIRES Notary Public, Hennepin County, Minn. My Commission Expires Oct 14, 1961

WE HEREBY CERTIFY THAT THE CITY COUNCIL OF THE CITY OF FRIDLEY, ANOKA COUNTY, MINNESOTA, DULY ACCEPTED AND APPROVED THE ANNEXED PLAT OF GIDEO'S FIRST ADDITION AT A REGULAR MEETING THEREOF, HELD THIS 25th DAY OF September A.D., 1958.

1960
OFFICE OF REGISTER OF DEEDS
STATE OF MINNESOTA, COUNTY OF ANOKA) ss
I hereby certify that the within instrument was filed for record on the 12th day of August 1958 at 4 o'clock P.M. and was duly recorded in book R. of Plates page 19
Strudiver
Register of Deeds
By Margaret Russell Deputy

CITY OF FRIDLEY, ANOKA COUNTY, MINNESOTA
Frank R. LaGrange, Jr. MAYOR
Stephen M. Muehlen CITY MANAGER
I HEREBY CERTIFY THAT TAXES FOR THE YEAR 1958 ON THE LANDS DESCRIBED WITHIN ARE PAID
Chatter Bowers
County Treasurer

TAXES PAID
This 20th day of Jan 1959
Kenneth W. Campbell
Auditor, Anoka County, Minn.
By Richard E. Sage Deputy