

ORIGINAL

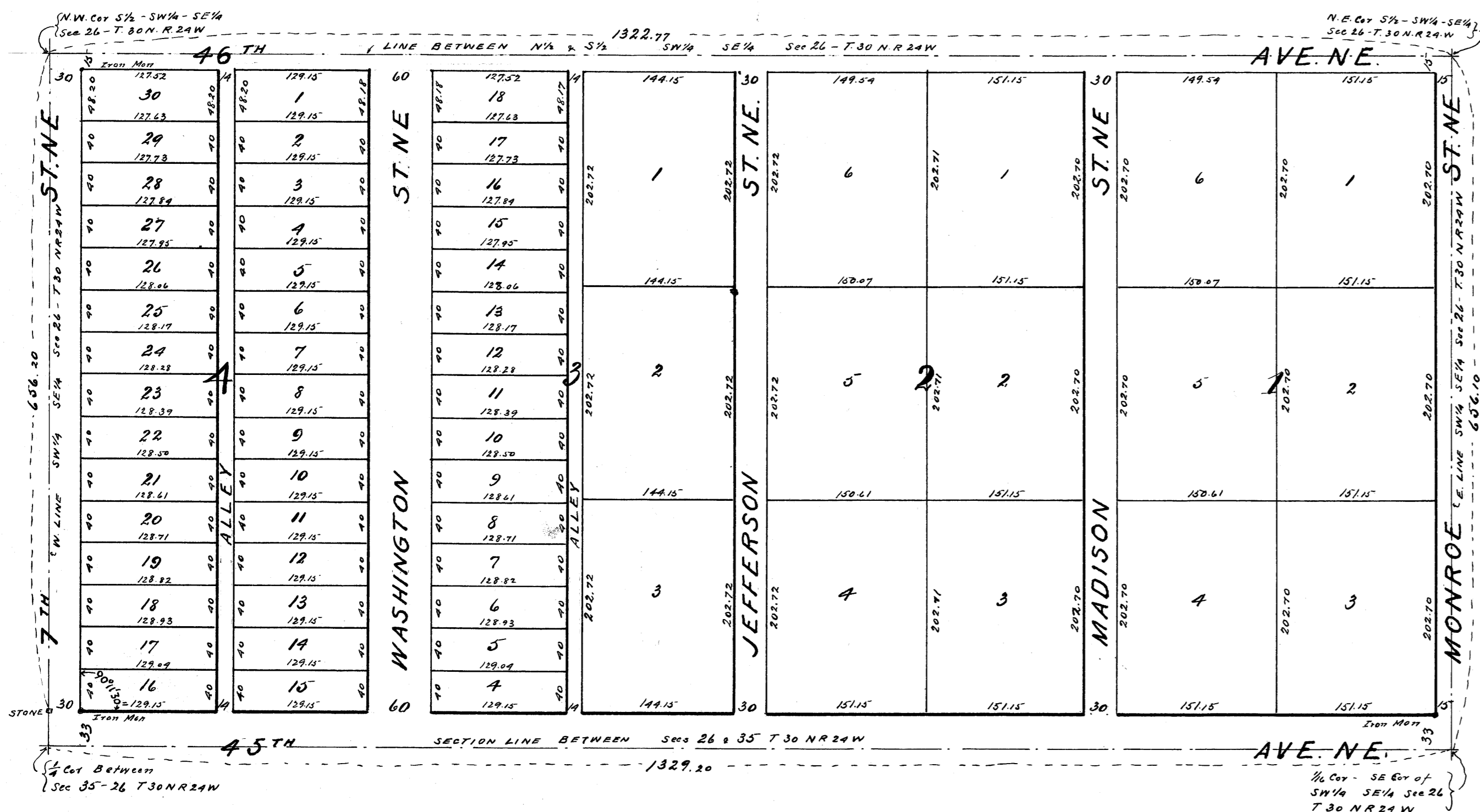
GILLETTE'S ANNEX

TO COLUMBIA HEIGHTS

ANOKA CO. MINN.

Scale 100' = 1"

Corr - Hill & Laughhead Civil Engineers



Know all men by these presents that L.S. GILLETTE COMPANY (a corporation existing under the laws of the State of Minnesota) owner and proprietor of the following described property, to wit: The South half (S¹/₂) of the South West Quarter (S.W¹/₄) of the South East Quarter (S.E¹/₄) of Section Twenty six (26) Township Thirty (30) North, Range Twenty four (24) West of the Fourth (4) Principal Meridian, have caused the same to be surveyed and platted as "GILLETTE'S ANNEX TO COLUMBIA HEIGHTS" and hereby donate and dedicate to the Public use forever the Avenues, Streets and Alleys as shown on the annexed plat.

In Testimony whereof L.S. GILLETTE COMPANY has caused these presents to be executed in its corporate name by its president and its secretary and its corporate seal to be hereto affixed this 26th day of June A.D. 1911.

In presence of
Mr. Frank L. Strouts
 G. H. Strouts

L.S. GILLETTE COMPANY
 By *L. S. Gillette* its President
 By *George S. Edwards* its Secretary

State of Minnesota }
 County of Hennepin }
 On this 26 day of June A.D. 1911 before me a Notary Public within and for said County personally appeared L.S. Gillette and George S. Edwards to me personally known who being each by me duly sworn did say that they are respectively the president and secretary of L.S. GILLETTE COMPANY the corporation named in the foregoing instrument and that the seal affixed to said instrument is the corporate seal of said corporation and that said instrument was signed and sealed in behalf of said corporation by authority of its Board of Directors and said L.S. Gillette and George S. Edwards acknowledged said instrument to be the free act and deed of said corporation.

Frank L. Strouts
 Notary Public Hennepin Co. Minn
 My commission expires Apr 18-1917

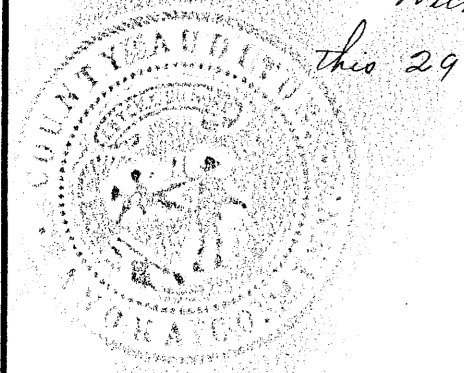
State of Minnesota }
 County of Hennepin }
 I hereby certify that I have surveyed and platted the property described in this plat as "GILLETTE'S ANNEX TO COLUMBIA HEIGHTS" that this plat is a correct representation of said survey, that all distances are correctly shown on the plat in feet and decimals of a foot that the monuments for guidance of future surveys have been correctly placed in the ground as shown on the plat, that the outside boundary lines are correctly designated on the plat that the topography of the land is correctly shown on the plat and that there are no wet lands or public highways to be designated on said plat other than as shown thereon.

W. B. Laughhead
 Surveyor

Above certificate subscribed and sworn to before me this 26 day of June A.D. 1911
Frank L. Strouts
 Notary Public Hennepin Co Minn
 My commission expires Apr 18-1917

State of Minnesota }
 County of Anoka }
 I, Arthur H. Swire, auditor of Anoka County, do hereby certify that this plat was approved by the Board of County Commissioners this 29th day of June, A. D. 1911.

Witness my hand and seal of office this 29th day of June 1911.
Arthur H. Swire
 County Auditor



35330
 OFFICE RECORD OF DEEDS, L.S.
 COUNTY OF ANOKA, MINN.
 I hereby certify that the within instrument was filed in the office for record on the 20th day of October, A. D. 1911 at 11 o'clock A.M. and was duly recorded in Book "B" of Plats, Page
W. B. Laughhead
 Register of Deeds

