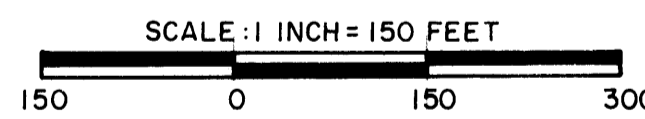
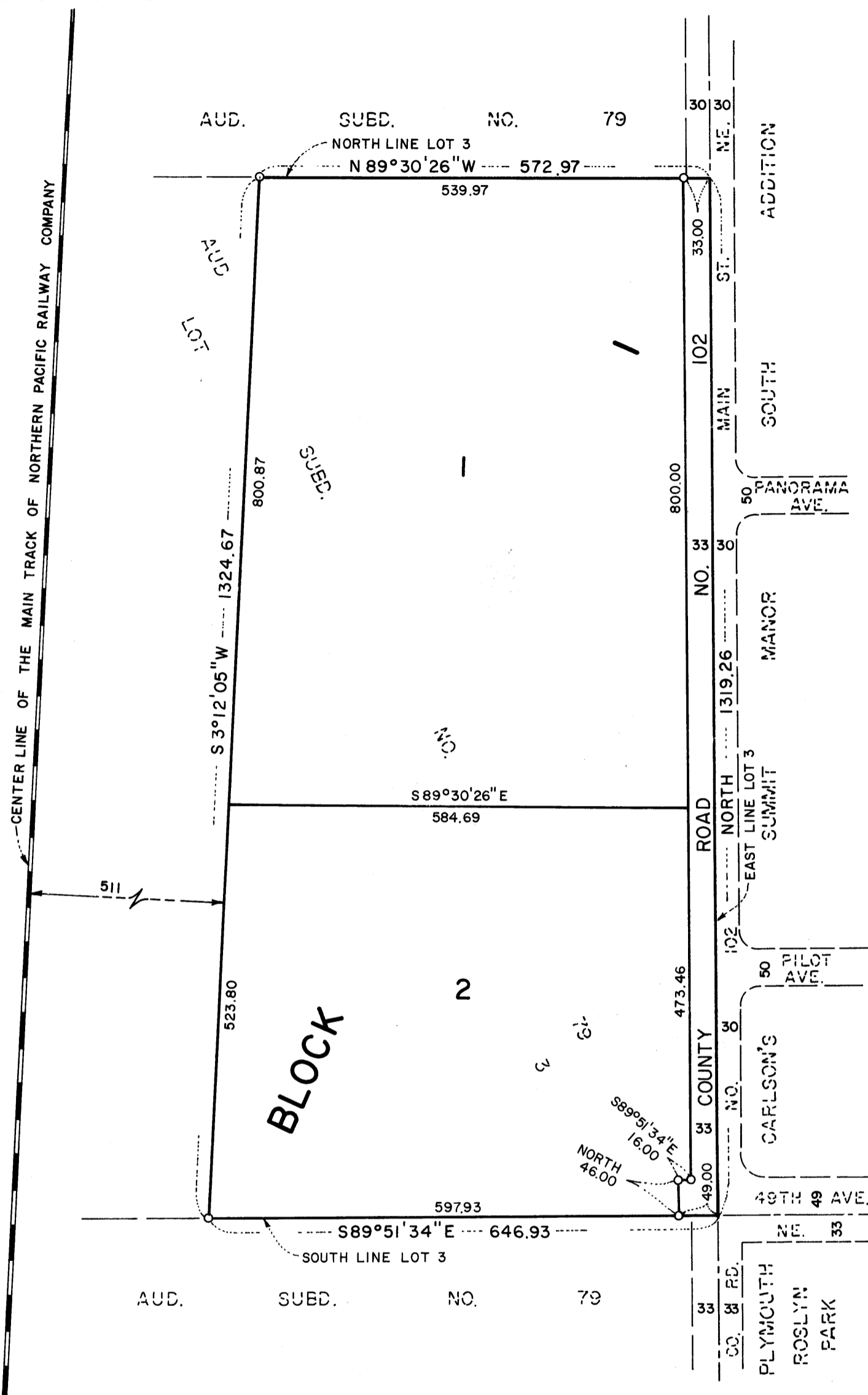


# GLACIER PARK COMPANY ADDITION

CITY OF FRIDLEY, COUNTY OF ANOKA

LOT SURVEYS COMPANY, INC.  
LAND SURVEYORS



○ DENOTES IRON MONUMENT

FOR THE PURPOSES OF THIS PLAT THE EAST LINE OF LOT 3, AUD. SUBD. NO. 79 IS ASSUMED TO BEAR NORTH.

KNOW ALL MEN BY THESE PRESENTS: That Glacier Park Company, a Delaware Corporation, fee owners, of the following described property situate in the County of Anoka, State of Minnesota, to-wit:

That portion of Lot 3, Auditor's Subdivision No. 79, Anoka County, Minnesota, according to the recorded plat thereof, lying easterly of a line parallel with and distant five hundred eleven (511) feet easterly, measured at right angles, from the center line of the main track of the Northern Pacific Railway Company as the same is now constructed and operated.

Has caused the same to be surveyed and platted as GLACIER PARK COMPANY ADDITION and do hereby donate and dedicate to the public for public use forever the Road as shown on the plat.

In witness whereof said Glacier Park Company, a Delaware Corporation, has caused these presents to be signed by its proper officers this 17<sup>th</sup> day of April, 1989.

Signed: David A. Sleason its AVP - Sales + Prop. Mgmt

State of Minnesota  
County of Anoka The foregoing instrument was acknowledged before me this 17<sup>th</sup> day of April, 1989, by David A. Sleason its AVP - Sales Prop Mgmt and \_\_\_\_\_ its \_\_\_\_\_ of Glacier Park Company, a Delaware Corporation, on behalf of said corporation.

GAIL J. PILGRIM  
NOTARY PUBLIC - MINNESOTA  
ANOKA COUNTY  
My Commission Expires June 23, 1993

Gail J. Pilgrim  
Notary Public, Anoka County, Minnesota  
My Commission Expires June 23, 1993

I hereby certify that I have surveyed and platted the property described on this plat as GLACIER PARK COMPANY ADDITION; that this plat is a correct representation of said survey; that the distances are correctly shown on said plat in feet and hundredths of a foot; that all monuments have been correctly placed in the ground as shown on said plat; that the outside boundary lines are correctly designated on said plat; and that there are no wetlands to be designated on said plat.

Raymond A. Prasch  
Raymond A. Prasch, Registered Land Surveyor  
Minnesota Registration No. 6743

State of Minnesota  
County of Hennepin The foregoing instrument was acknowledged before me this 31<sup>st</sup> day of March, 1989, by Raymond A. Prasch, Registered Land Surveyor.

MILTON E. HYLAND  
NOTARY PUBLIC - MINNESOTA  
HENNEPIN COUNTY  
My Commission Expires 11-18-93

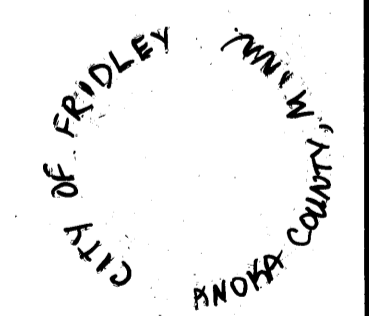
Milton E. Hyland  
Milton E. Hyland, Notary Public, Hennepin Co., Minn.  
My Commission Expires November 18, 1993

This plat of GLACIER PARK COMPANY ADDITION was approved and accepted by the City Council of Fridley, Minnesota at a regular meeting thereof held this 17<sup>th</sup> day of April, 1989. If applicable, the written comments and recommendations of the Commissioner of Transportation and the County Highway Engineer have been received by the City or the prescribed 30 day period has elapsed without receipt of such comments and recommendations, as provided by Minnesota Statutes Section 505.03, Subd. No. 2.

By William J. Nee Mayor By Shirley A. Heapala Clerk

Checked and approved this 14<sup>th</sup> day of June, 1989.

Marj D. Anderson  
County Surveyor, Anoka County, Minnesota



"NO DELINQUENT TAXES AND TRANSFER ENTLRED"  
June 14<sup>th</sup> 1989  
Charles R. Repehine  
Auditor, Anoka County  
BY John S. Reim  
Deputy

I HEREBY CERTIFY THAT THE TAXES PAYABLE IN THE YEAR 1989 ON THE LANDS DESCRIBED WITHIN ARE PAID  
Donald C. Bailey  
Anoka County Treasurer

853460  
OFFICE OF COUNTY RECORDER  
STATE OF MINNESOTA, COUNTY OF ANOKA  
I hereby certify that the within instrument was filed in this office for record on the 14<sup>th</sup> day of April, 1989 A.D., 1989.  
to check 2 and was duly recorded in book 404 page 45  
Neil J. Lundahl  
County Recorder  
By Carl Swanson  
Deputy