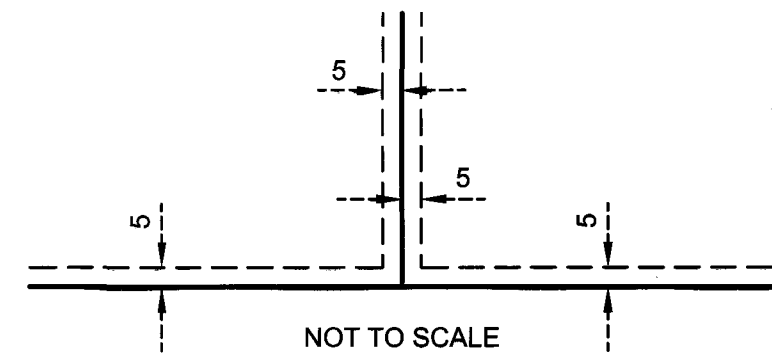


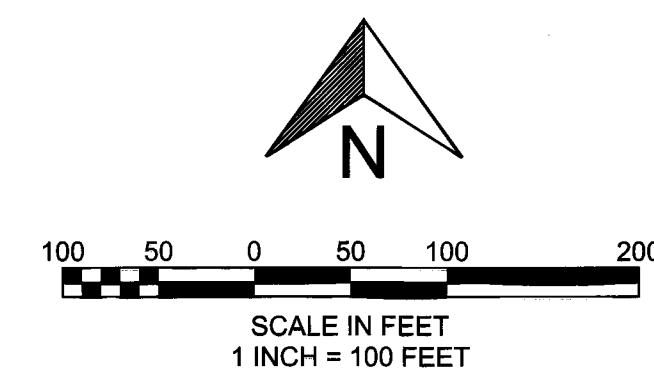
GLIMCHER NORTHTOWN MALL SIXTH ADDITION

CITY OF BLAINE
COUNTY OF ANOKA
SEC. 31, T. 31, R. 23

DRAINAGE AND UTILITY EASEMENTS ARE SHOWN THUS:

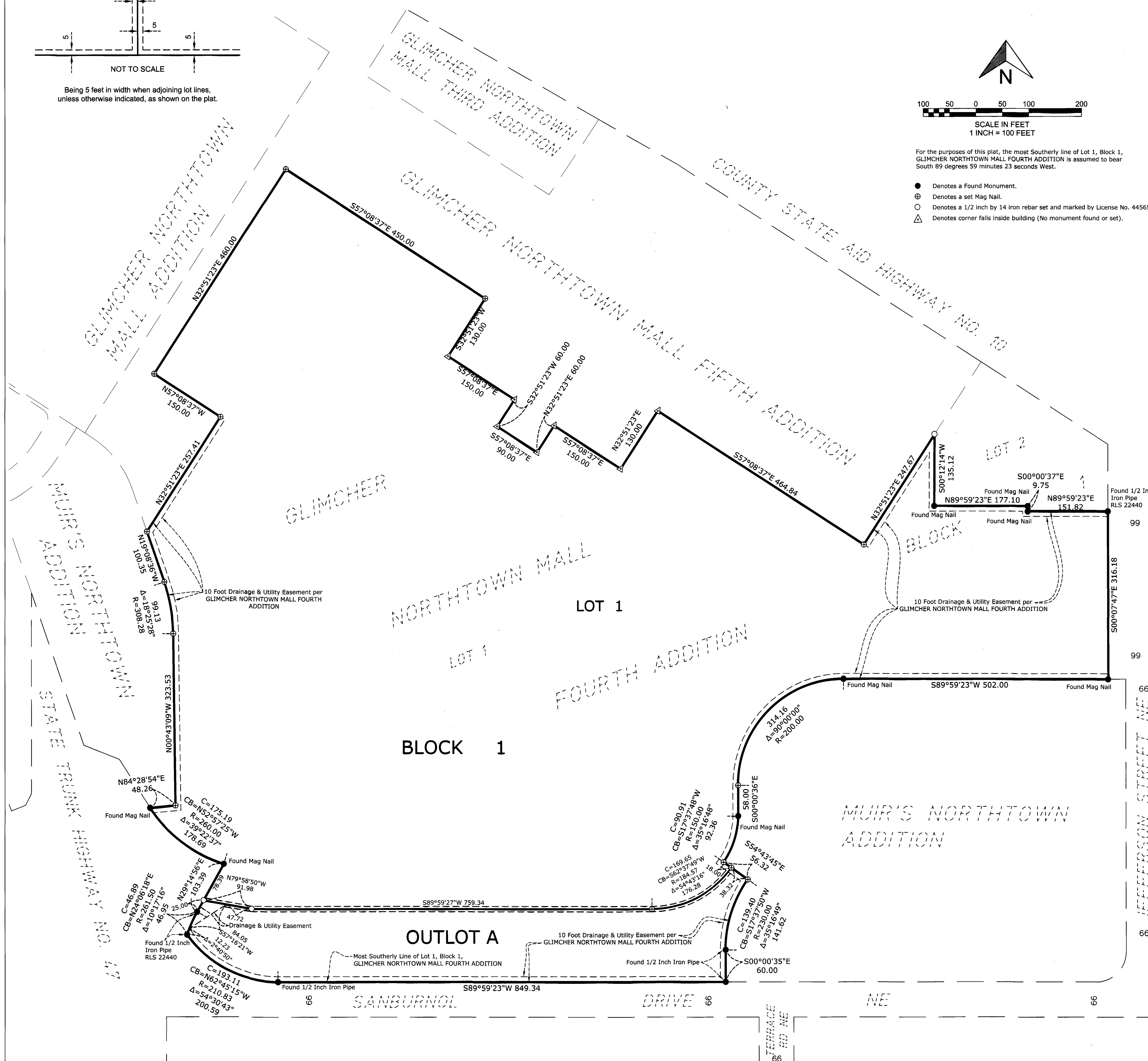


Being 5 feet in width when adjoining lot lines, unless otherwise indicated, as shown on the plat.



For the purposes of this plat, the most southerly line of Lot 1, Block 1, GLIMCHER NORTHTOWN MALL FOURTH ADDITION is assumed to bear South 89 degrees 59 minutes 23 seconds West.

- Denotes a Found Monument.
- ⊗ Denotes a set Mag Nail.
- Denotes a 1/2 inch by 14 iron rebar set and marked by License No. 44565.
- △ Denotes corner falls inside building (No monument found or set).



KNOW ALL PERSONS BY THESE PRESENTS: That WPG Northtown Venture, LLC, a Delaware limited liability company, owner of the following described property:

Lot 1, Block 1, GLIMCHER NORTHTOWN MALL FOURTH ADDITION, Anoka County, Minnesota

Has caused the same to be surveyed and platted as GLIMCHER NORTHTOWN MALL SIXTH ADDITION and does hereby dedicate to the public for public use the drainage and utility easements as shown on this plat.

In witness whereof said WPG Northtown Venture, LLC, a Delaware limited liability company, has caused these presents to be signed by its proper officer this 31st day of October, 2019.

Signed: WPG NORTHTOWN VENTURE, LLC.
 By: Washington Prime Property Limited Partnership, a Delaware limited partnership, its sole member
 By: Washington Prime Properties LLC, a Delaware limited liability company, its general partner
 By: WPG Subsidiary Holdings I, LLC, a Maryland limited liability company, its sole member
 By: Washington Prime Group, L.P., an Indiana limited partnership, its sole member
 By: Washington Prime Group Inc., an Indiana corporation, its general partner

Dan Scott
By Dan Scott, SVP, Development - Anchor Lease

STATE OF OHIO
COUNTY OF FRANKLIN

This instrument was acknowledged before me this 31st day of October, 2019 by Dan Scott, as SVP, Development - Anchor Lease of Washington Prime Group Inc., an Indiana corporation, the general partner of Washington Prime Group, L.P., an Indiana limited partnership, the sole member of WPG Subsidiary Holdings I, LLC, a Maryland limited liability company, the sole member of Washington Prime Properties LLC, a Delaware limited liability company, the general partner of Washington Prime Property Limited Partnership, a Delaware limited partnership, the sole member of WPG Northtown Venture, LLC, a Delaware limited liability company, on behalf of the company.

Shelley Stevens (Signature)
Shelley L. Stevens (Print Name)

Notary Public, Franklin County, Ohio
My commission expires 10-31-2023

SURVEYORS CERTIFICATE
I Rory L. Synstelien do hereby certify that this plat was prepared by me or under my direct supervision; that I am a duly Licensed Land Surveyor in the State of Minnesota; that this plat is a correct representation of the boundary survey; that all mathematical data and labels are correctly designated on the plat; that all monuments depicted on this plat have been, or will be correctly set within one year; that all water boundaries and wet lands, as defined in Minnesota Statutes, Section 505.01, Subd. 3, as of the date of this certificate are shown and labeled on this plat; and all public ways are shown and labeled on this plat.

Dated this 15th day of OCTOBER, 2019.

Rory L. Synstelien
Rory L. Synstelien, Licensed Land Surveyor
Minnesota License No. 44565

STATE OF MINNESOTA
COUNTY OF Ramsey
This instrument was acknowledged before me this 15th day of October, 2019 by Rory L. Synstelien.

Michael Rawlings (Signature)
Michael Rawlings (Print Name)

Notary Public, Ramsey County, Minnesota
My commission expires January 31, 2023

CITY COUNCIL
City Council, City of Blaine, Minnesota

This plat of GLIMCHER NORTHTOWN MALL SIXTH ADDITION was approved and accepted by the City Council of the City of Blaine, Minnesota at a regular meeting thereof held this 11th day of October, 2019, and said plat is in compliance with the provisions of Minnesota Statutes, Section 505.03, Subd. 2.

City Council, City of Blaine, Minnesota
By: Law Mayor
By: Cher Clerk

COUNTY SURVEYOR
I hereby certify that in accordance with Minnesota Statutes, Section 505.021, Subd. 11, this plat has been reviewed and approved this 5th day of November, 2019.

By: Charles F. Gitzten
Charles F. Gitzten
Anoka County Surveyor

COUNTY AUDITOR/TREASURER
Pursuant to Minnesota Statutes, Section 505.021, Subd. 9, taxes payable in the year 2019 on the land hereinbefore described have been paid. Also, pursuant to Minnesota Statutes, Section 272.12, there are no delinquent taxes and transfer entered this 8th day of November, 2019.

By: Jonell M. Sawyer
Jonell M. Sawyer
Property Tax Administrator
By: Deputy Deputy

COUNTY RECORDER/REGISTRAR OF TITLES
County of Anoka, State of Minnesota

I hereby certify that this plat of GLIMCHER NORTHTOWN MALL SIXTH ADDITION was filed in the office of the County Recorder/Registrar of Titles for public record on this 8th day of November, 2019, at 8:21 o'clock A.M. and was duly recorded as Document Number 2243835.003.

By: Jonell M. Sawyer
Jonell M. Sawyer
County Recorder/Registrar of Titles
By: Deputy Deputy