

GOBERNATZ ADDITION

CITY OF RAMSEY COUNTY OF ANOKA

3/8 INCH IRON ROD FOUND IN PLACE ACCEPTED AS PERPETUATION OF STAKE REFERRED TO IN BOOK 67 OF DEEDS, PAGE 298.

KNOW ALL PERSONS BY THESE PRESENTS: That John M. Gobernatz and Avis M. Gobernatz, husband and wife, owners and proprietors of the following described property situated in the County of Anoka, State of Minnesota, to-wit:

That part of Lot 7, AUDITOR'S SUBDIVISION NUMBER 27, according to the recorded plat thereof, Anoka County, Minnesota, lying easterly of the center line of State Trunk Highway No. 47 as the same is now laid out and traveled.

Have caused the same to be surveyed and platted as GOBERNATZ ADDITION and do hereby donate and dedicate to the public for public use forever the easements for drainage and/or utility purposes as shown on the plat. In witness whereof, said John M. Gobernatz and Avis M. Gobernatz, have hereunto fixed their hands this 4 day of October, 1989.

SIGNED: John M. Gobernatz John M. Gobernatz
Avis M. Gobernatz Avis M. Gobernatz

STATE OF MINNESOTA) The foregoing instrument was acknowledged before me this
COUNTY OF ANOKA) 4 day of October, 1989 by John M. Gobernatz and Avis M. Gobernatz, husband and wife.



Bonnie L. Bittmann
Notary Public, Anoka County, Minnesota.
My Commission expires July 25, 1991

I hereby certify that I have surveyed and platted the land described in the dedication on this plat as GOBERNATZ ADDITION; that the plat is a correct representation of said survey; that all distances are correctly shown on said plat in feet and hundredths of a foot; that the monuments have been correctly placed in the ground as shown; that the outside boundaries are correctly designated on said plat; and that there are no wet lands or public highways to be designated on said plat other than as shown thereon.

Jeffrey N. Caine
Jeffrey N. Caine, Registered Land Surveyor
Minnesota Registration No. 12251

STATE OF MINNESOTA) The surveyors certificate was acknowledged before me
COUNTY OF ANOKA) a Notary Public, this 2nd day of October, 1989, by Jeffrey N. Caine, Land Surveyor.



Nancy R. Caine
Notary Public, Anoka County, Minnesota
My Commission expires 9-22-92

CITY OF RAMSEY

We hereby certify that the City Council of the City of Ramsey, Anoka County, Minnesota, duly accepted and approved the plat of GOBERNATZ ADDITION at a regular meeting held this 26 day of September, 1989. If applicable, the written comments and recommendations of the Commissioner of Transportation and the County Highway Engineer have been received by the city or the prescribed 30 day period has elapsed without receipt of such comments and recommendations, as provided by Minn. Statutes, Section 505.03, Subd. 2.

By Henry R. Reimann Mayor By Paul R. Huth Clerk

Checked and approved this 9th day of OCTOBER, 1989.

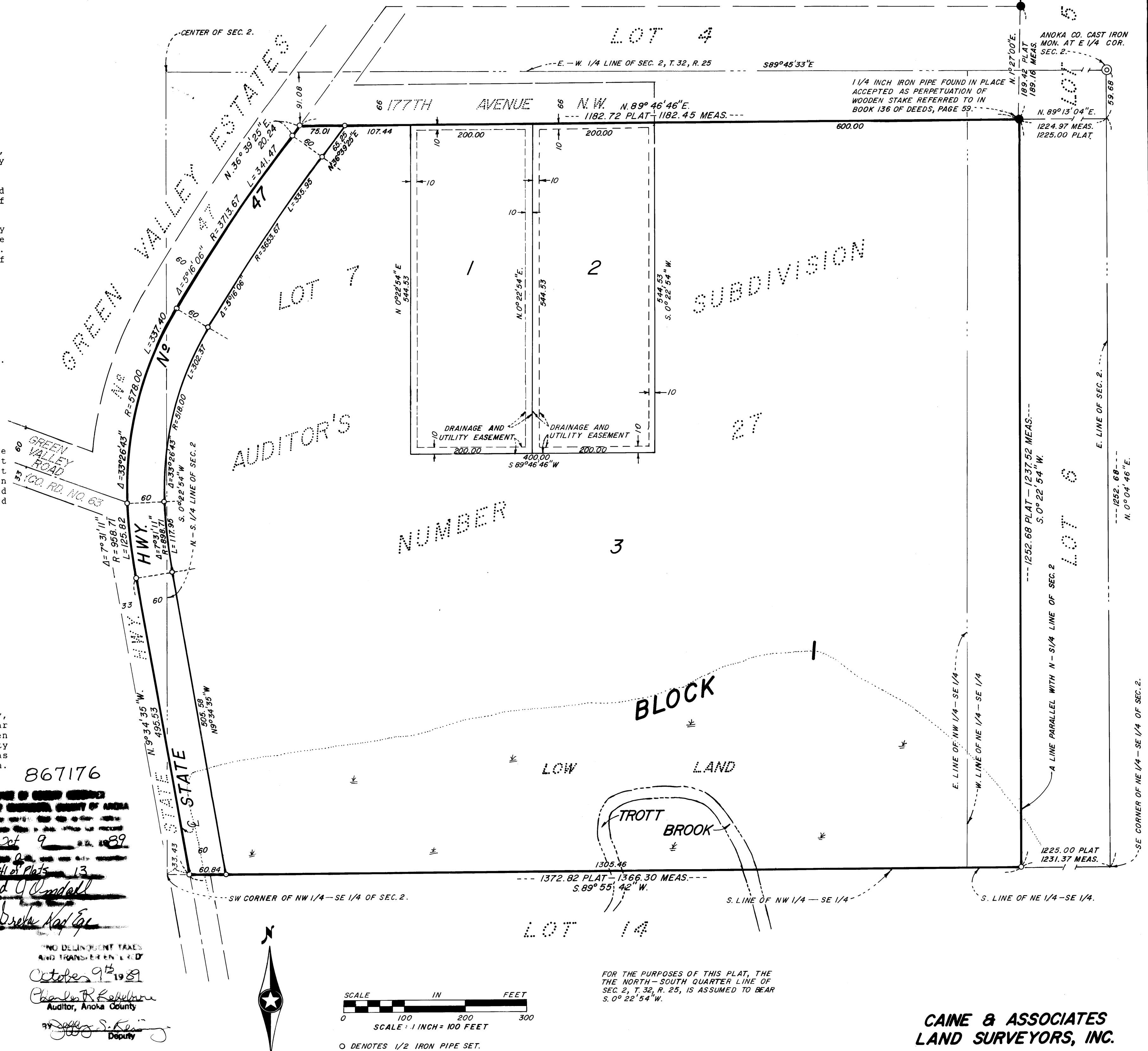
By MERLYN D. ANDERSON by Larry D. Hoin
Anoka County Surveyor deputy

867176
OFFICE OF COUNTY ENGINEER
COUNTY OF ANOKA
Set 9 1989
4 of Plats 13
Ted J. Randall
Dorothy Kay Gae

CITY OF RAMSEY
MUNICIPAL
CORP.
ANOKA COUNTY, MINN.

NO DELINQUENT TAXES AND TRANSFER ENLIED
October 9th 1989
Charles R. Kellerman
Auditor, Anoka County
Jeffrey S. Caine
Deputy

001 ACRA 10-09-89 #096 \$30.00 d



Caine & Associates
Land Surveyors, Inc.