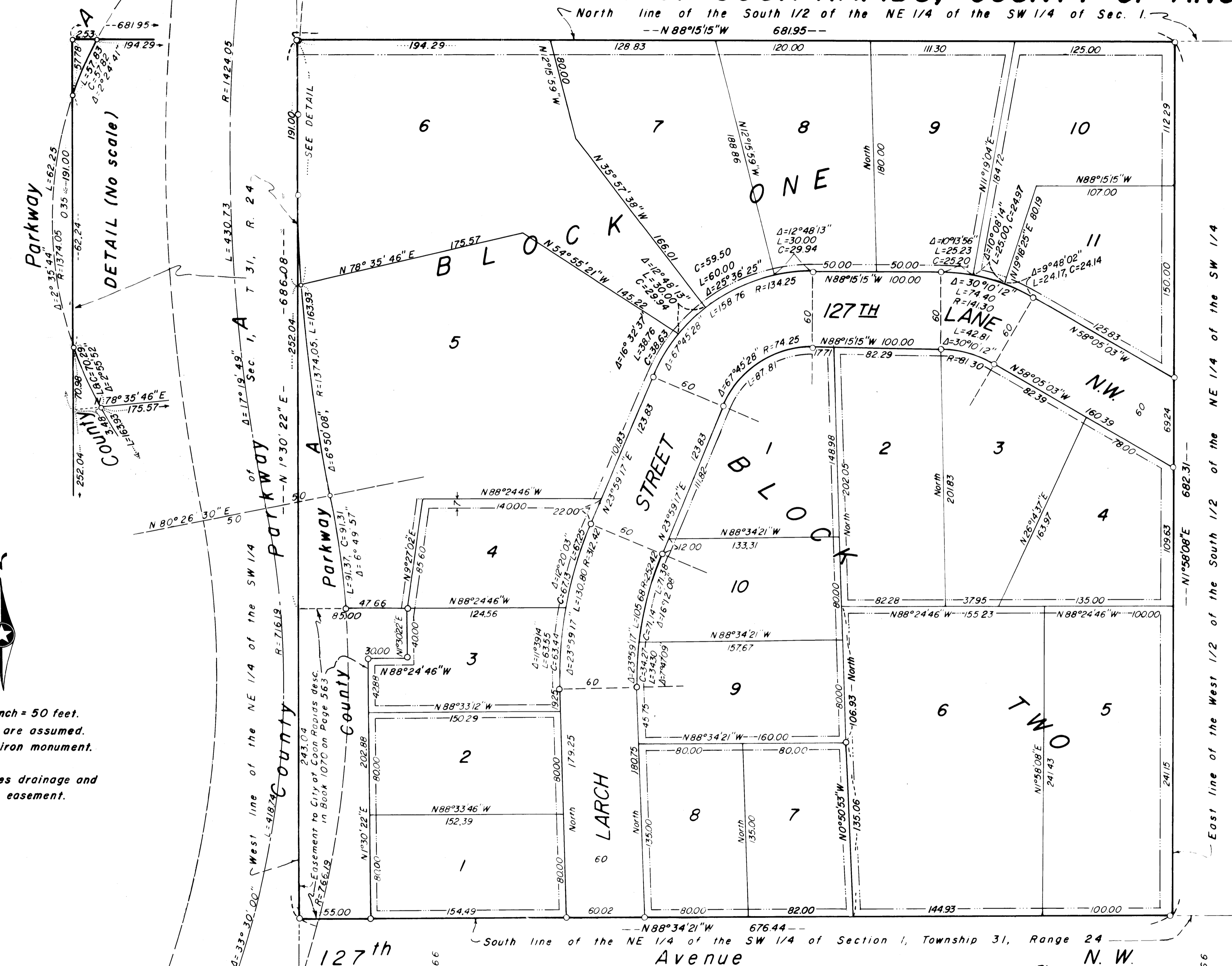


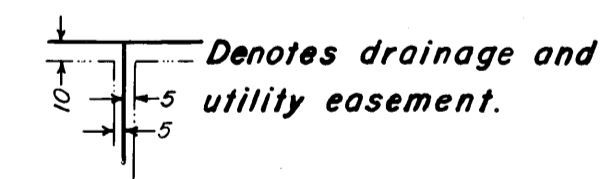
GOLF VIEW ESTATES

CITY OF COON RAPIDS, COUNTY OF ANOKA

North line of the South 1/2 of the NE 1/4 of the SW 1/4 of Sec. 1.
--N 88°15'15"W 681.95--



Scale: 1 inch = 50 feet.
Bearings are assumed.
O Denotes iron monument.



JOHN OLIVER & ASSOC. INC.
LAND SURVEYORS
Elk River, Minn.

127th Avenue
South line of the NE 1/4 of the SW 1/4 of Section 1, Township 31, Range 24
N.W.

Larch Street
H L A N D M A N O R