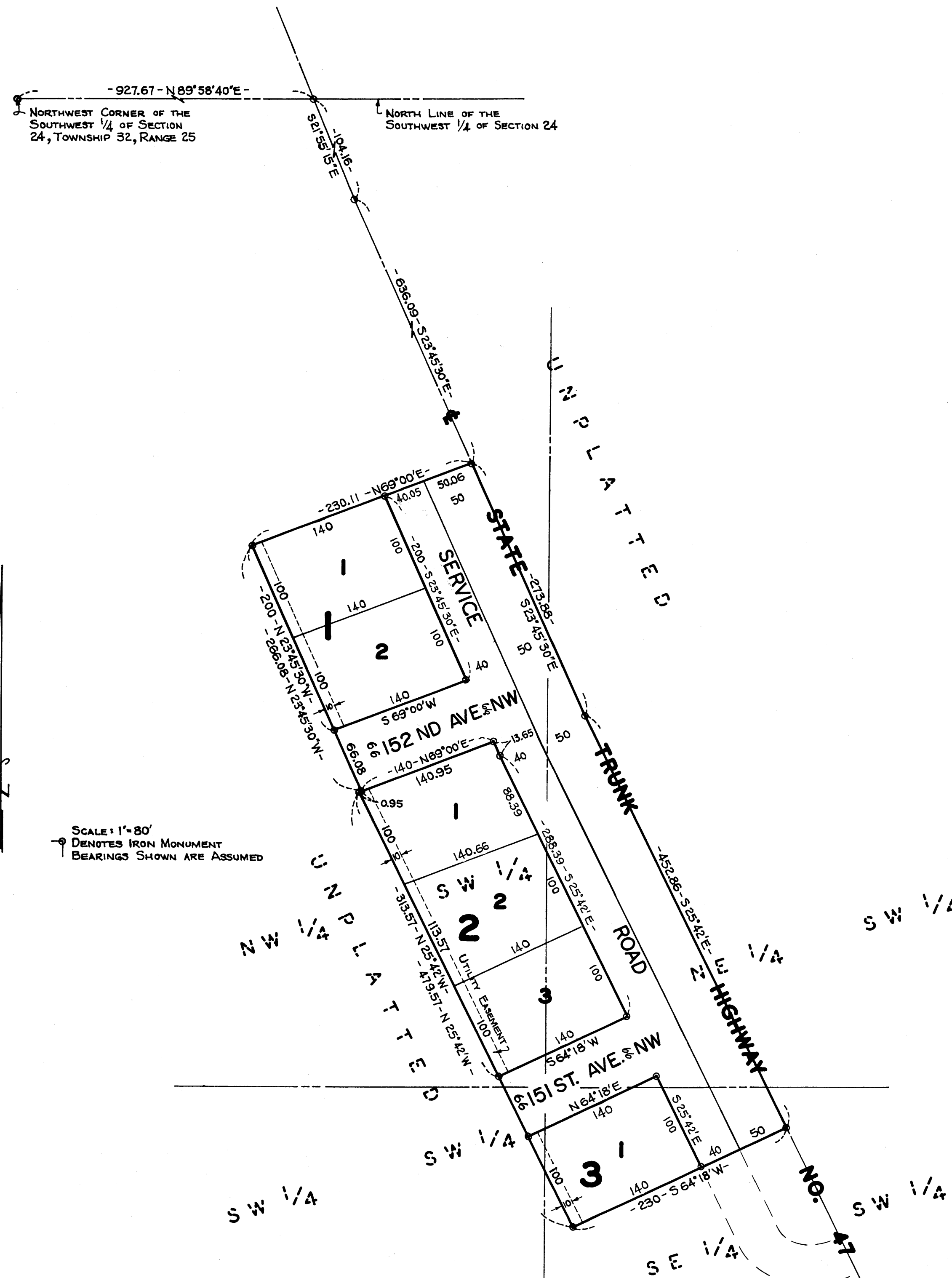


GORHAM'S ADDITION

TOWNSHIP OF RAMSEY
ANOKA COUNTY, MINNESOTA



SCALE: 1"=80'
DENOTES IRON MONUMENT
BEARINGS SHOWN ARE ASSUMED

N. C. Hoium and Associates, Inc.
LAND SURVEYORS

KNOW ALL MEN BY THESE PRESENTS: THAT WE, MARTIN H. GORHAM AND IRENE C. GORHAM, HIS WIFE, OWNERS AND PROPRIETORS, OF THE FOLLOWING DESCRIBED PROPERTY SITUATE IN THE STATE OF MINNESOTA AND COUNTY OF ANOKA TO-WIT: ALL THAT PART OF THE SOUTH-WEST 1/4 OF SECTION 24, TOWNSHIP 32, RANGE 25 LYING WESTERLY OF THE CENTERLINE OF STATE TRUNK HIGHWAY NO. 47 DESCRIBED AS FOLLOWS: COMMENCING AT THE INTERSECTION OF THE CENTERLINE OF SAID STATE TRUNK HIGHWAY NO. 47 WITH THE NORTH LINE OF SAID SOUTHWEST 1/4 OF SECTION 24, SAID POINT BEING 927.67 FEET EAST FROM THE NORTHWEST CORNER OF SAID SOUTHWEST 1/4 OF SECTION 24; THENCE SOUTH 21°-55'-15" EAST ALONG SAID CENTERLINE A DISTANCE OF 104.16 FEET; THENCE SOUTH 23°-45'-30" EAST CONTINUING ALONG SAID CENTERLINE A DISTANCE OF 636.09 FEET TO THE ACTUAL POINT OF BEGINNING OF THE TRACT OF LAND TO BE HEREBY DESCRIBED; THENCE CONTINUING SOUTH 23°-45'-30" EAST AND ALONG SAID CENTERLINE A DISTANCE OF 273.88 FEET; THENCE SOUTH 25°-42' EAST AND ALONG SAID CENTERLINE A DISTANCE OF 452.86 FEET; THENCE SOUTH 64°-18' WEST A DISTANCE OF 230 FEET; THENCE NORTH 25°-42' WEST A DISTANCE OF 479.57 FEET; THENCE NORTH 69°-00' EAST A DISTANCE OF 0.95 FEET; THENCE NORTH 23°-45'-30" WEST A DISTANCE OF 266.08 FEET; THENCE NORTH 69°-00' EAST A DISTANCE OF 230.11 FEET TO THE ACTUAL POINT OF BEGINNING. HAVE CAUSED THE SAME TO BE SURVEYED AND PLATTED AS GORHAM'S ADDITION AND DO HEREBY DONATE AND DEDICATE TO THE PUBLIC FOR PUBLIC USE FOREVER THE AVENUES, HIGHWAY, AND SERVICE ROAD AS SHOWN ON THE ANNEXED PLAT. ALSO SUBJECT TO UTILITY EASEMENTS AS SHOWN ON THE ANNEXED PLAT. IN WITNESS WHEREOF WE HAVE HEREUNTO SET OUR HANDS AND SEALS ON THIS 6th DAY OF August, A.D. 1965.

IN PRESENCE OF:

Edward E. Colera AND Patricia Mittelstadt
Edward E. Colera AND Patricia Mittelstadt

SIGNED:

Martin H. Gorham
MARTIN H. GORHAM
Irene C. Gorham
IRENE C. GORHAM

STATE OF MINNESOTA)
COUNTY OF ANOKA) ss

ON THIS 6th DAY OF August A.D. 1965, BEFORE ME, A NOTARY PUBLIC WITHIN AND FOR SAID COUNTY AND STATE, PERSONALLY APPEARED MARTIN H. GORHAM AND IRENE C. GORHAM, HIS WIFE, TO ME PERSONALLY KNOWN TO BE THE PERSONS DESCRIBED IN AND WHO EXECUTED THE FOREGOING INSTRUMENT AND THEY AFFIRM AND ACKNOWLEDGE THAT THEY EXECUTED THE SAME AS THEIR OWN FREE ACT AND DEED.

PATRICIA MITTELSTADT
Notary Public, Anoka County, Minn.
My Commission Expires Sept. 17, 1959

MY COMMISSION EXPIRES 9-17-1969

Patricia Mittelstadt
NOTARY PUBLIC, ANOKA COUNTY, MINNESOTA

I HEREBY CERTIFY THAT I HAVE SURVEYED AND PLATTED THE LAND DESCRIBED IN THE DEDICATION ON THIS PLAT AS GORHAM'S ADDITION; THAT THIS PLAT IS A CORRECT REPRESENTATION OF SAID SURVEY; THAT ALL DISTANCES ARE CORRECTLY SHOWN ON SAID PLAT; THAT THE MONUMENTS FOR THE GUIDANCE OF FUTURE SURVEYS HAVE BEEN CORRECTLY PLACED IN THE GROUND AS SHOWN ON THE PLAT; THAT THE OUTSIDE BOUNDARIES OF THE LAND ARE CORRECTLY DESIGNATED ON SAID PLAT; AND THAT THERE ARE NO WET LANDS OR PUBLIC HIGHWAYS TO BE DESIGNATED ON SAID PLAT OTHER THAN ARE SHOWN THEREON.

STATE OF MINNESOTA)
COUNTY OF ANOKA) ss

ABOVE SURVEYORS CERTIFICATE SUBSCRIBED AND SWORN TO BEFORE ME, A NOTARY PUBLIC WITHIN AND FOR SAID COUNTY AND STATE, ON THIS 4th DAY OF August A.D. 1965.

KENNETH CAMPTON
Notary Public, Anoka County, Minn.
My Commission Expires July 22, 1970

MY COMMISSION EXPIRES 7-22-1970

N. C. Hoium
REGISTERED LAND SURVEYOR
MINNESOTA REGISTRATION No. 4427

Kenneth Campton
NOTARY PUBLIC, ANOKA COUNTY, MINNESOTA

RECOMMENDED FOR APPROVAL THIS 24th DAY OF Sept., A.D. 1965.

G. J. Lundberg
COUNTY HIGHWAY ENGINEER, ANOKA COUNTY, MINN.

ANNEXED PLAT OF GORHAM'S ADDITION WAS APPROVED BY THE TOWN BOARD OF THE TOWNSHIP OF RAMSEY AT A REGULAR MEETING THEREOF HELD THIS 16 DAY OF August, 1965.

Dennis Crowe
CHAIRMAN
Ralph Etienne
CLERK

THIS PLAT APPROVED AS TO FORM AND EXECUTION ON THIS 7th DAY OF October A.D. 1965.

Robert E. Johnson
COUNTY ATTORNEY, ANOKA COUNTY, MINNESOTA

THIS PLAT WAS APPROVED AND ACCEPTED BY THE BOARD OF COUNTY COMMISSIONERS OF THE COUNTY OF ANOKA, STATE OF MINNESOTA, AT A REGULAR MEETING THEREOF HELD THIS 26th DAY OF August A.D. 1965.

Mike E. O'Bannon
CHAIRMAN
Kenneth W. Campbell
COUNTY AUDITOR

CHECKED AND APPROVED THIS 24th DAY OF September AD 1965.

Poland W. Anderson
COUNTY SURVEYOR, ANOKA COUNTY, MINNESOTA

I HEREBY CERTIFY THAT THE TAXES PAYABLE IN THE YEAR 1965 ON THE LANDS DESCRIBED WITHIN ARE PAID
Robert A. Peterson
Anoka County Treasurer

379935
OFFICE OF REGISTER OF DEEDS
STATE OF MINNESOTA, COUNTY OF ANOKA } ss

I hereby certify that the within instrument was filed in this office for record on the 14th day of Oct, A.D. 1965 at 2:30 o'clock PM, and was duly recorded in book 1 of Plats, page 22.
Gertrude Skinner
Register of Deeds
By Margaret Russell
clerk

TAXES PAID
This 14th day of Oct, 1965
Kenneth W. Campbell
Auditor, Anoka County, Minn.
Deane Whelan
County Auditor