

# GOSPEL HALL ADDITION

KNOW ALL PERSONS BY THESE PRESENTS: That the Iowa-Minnesota District of the Wesleyan Church, Inc., a non-profit corporation under the laws of the State of Iowa, owner of the following described property situated in the County of Anoka, State of Minnesota, to wit

Lots 11, 12, 13, 14, 15, 16, 17, 18, 19, 20, 21, Block 15, Hamiltons Addition to "Mechanicsville", according to the plat on file and of record in the office of the Register of Deeds in and for Anoka County, State of Minnesota.

That part of the vacated alley in Block 15, Hamiltons Addition to "Mechanicsville", Anoka County, Minnesota, lying southerly of the westerly extension of the north line of Lot 11, said Block 15, and lying northerly of the westerly extension of the south line of Lot 15, said Block 15.

Has caused the same to be surveyed and platted as GOSPEL HALL ADDITION and does hereby donate and dedicate to the public for public use forever the easements as shown on this plat for drainage and utility purposes only.

In witness whereof said Iowa-Minnesota District of the Wesleyan Church, Inc. has caused these presents to be signed by its proper officer(s) this 3rd day of MAY, 2005

Iowa-Minnesota District of the Wesleyan Church, Inc.  
By Arnold Chelley Name By John Clark Name

As Dist. Supt. As Dist. Secy

State of Minnesota  
County of Anoka

The foregoing instrument was acknowledged before me this 3rd day of May, 2005  
by Ronald C. Melting as Dist. Supt. and  
by John Clark as Dist. Secy of  
Iowa-Minnesota District of the Wesleyan Church, Inc., a non-profit corporation under the laws of the State of Iowa, on behalf of the corporation.

Alan W. Goracke  
Notary Public  
My commission expires Jan. 31, 2010

I, Walter J. Gregory, hereby certify that I have surveyed and platted the property described on this plat as GOSPEL HALL ADDITION, that this plat is a correct representation of the survey, that all distances are correctly shown on the plat in feet and hundredths of a foot, that all monuments have been correctly placed in the ground as shown or will be correctly placed in the ground as designated, that the outside boundary lines are correctly designated on the plat and that there are no wet lands or public highways to be designated other than as shown.

Walter J. Gregory  
Walter J. Gregory, Land Surveyor  
Minnesota License Number 14889

State of Minnesota  
County of WASHINGTON

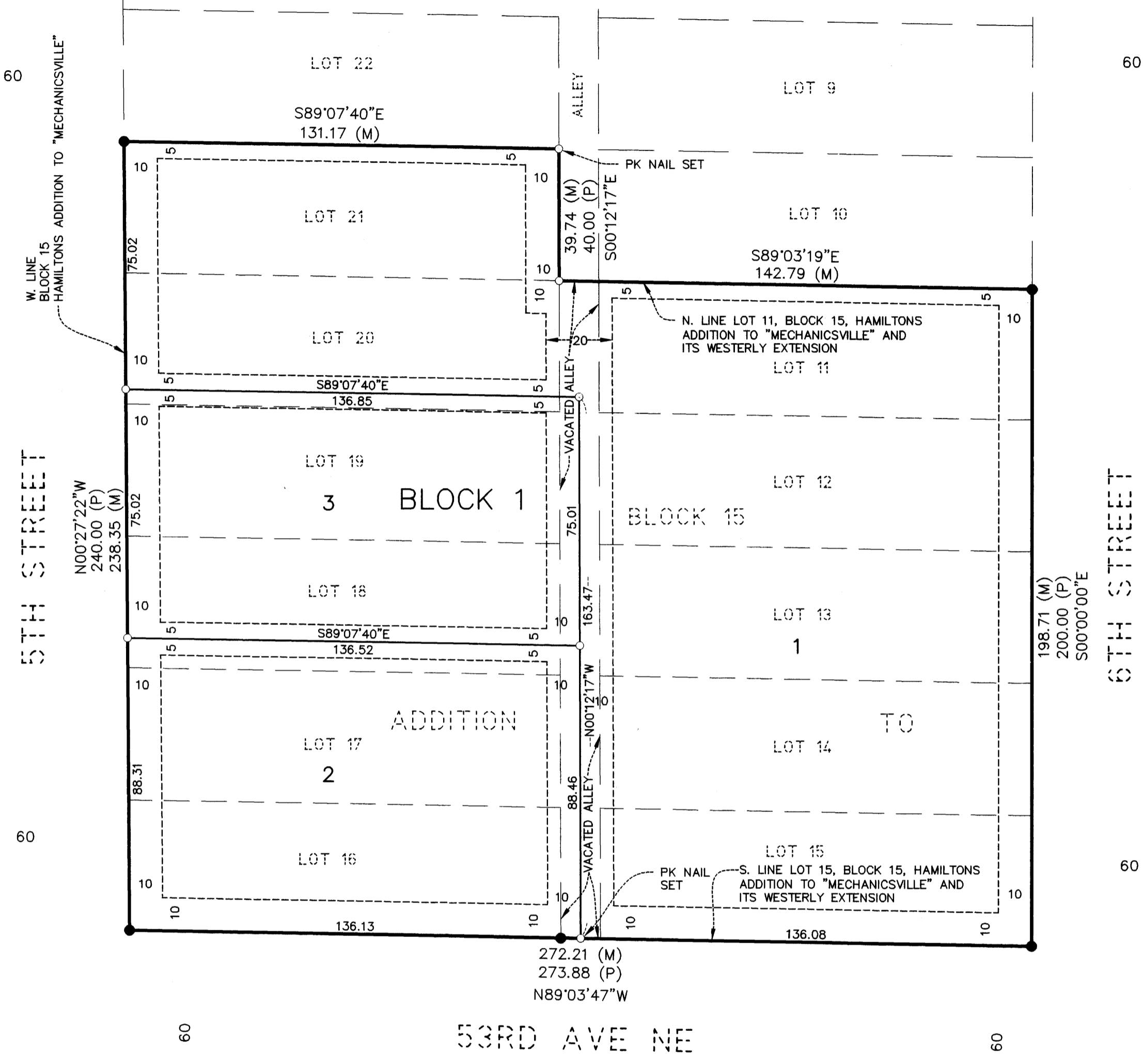
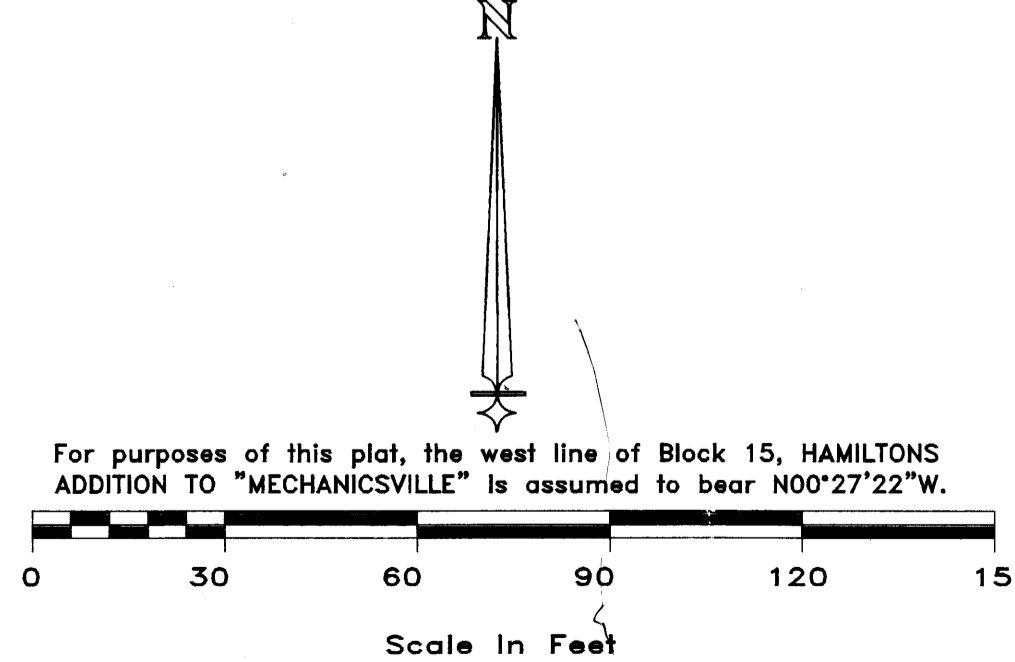
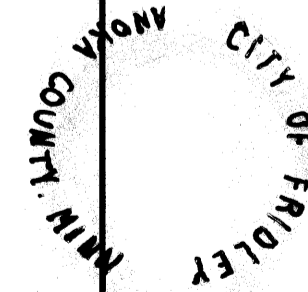
The foregoing Surveyor's Certificate was acknowledged before me this 4th day of MAY, 2005.  
by Walter J. Gregory, Minnesota License No. 14889  
James Melita  
Notary Public  
My commission expires Jan. 31, 2010

CITY OF FRIDLEY, MINNESOTA  
This plat of GOSPEL HALL ADDITION was approved and accepted by the City Council of Fridley, Minnesota, at a regular meeting thereof held this 9th day of May, 2005. If applicable, the written comments and recommendations of the Commissioner of Transportation and the County Highway Engineer have been received by the city or the prescribed 30 day period has elapsed without receipt of such comments and recommendations, as provided by Minn. Statutes, Section 505.03, Subd. 2.

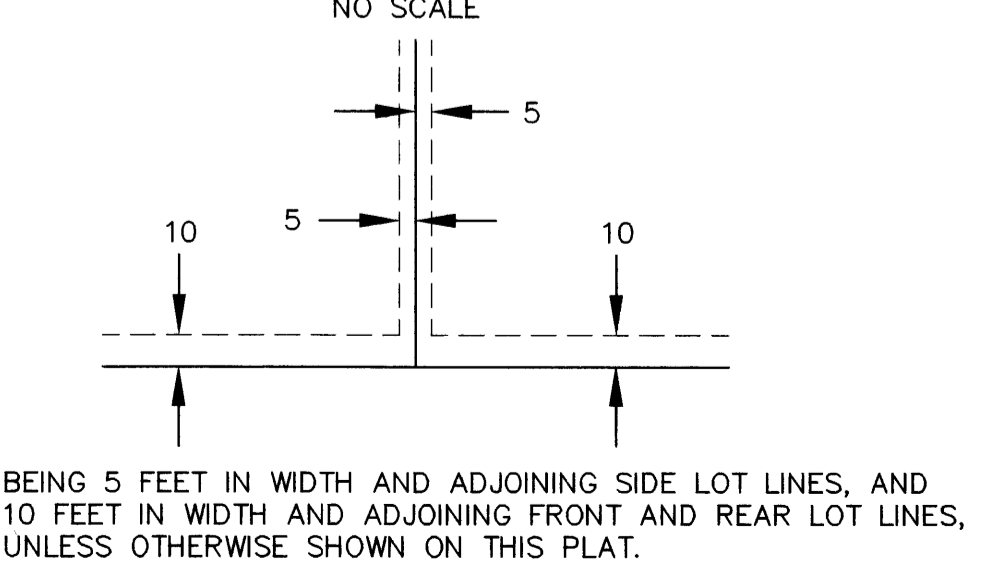
CITY COUNCIL OF THE CITY OF FRIDLEY, MINNESOTA  
Scott J. Lund Mayor Richard Schreyer Clerk  
ANOKA COUNTY SURVEYOR

I hereby certify that this plat has been checked and approved this 13th day of May, 2005.

By Larry D. Hoiom  
Larry D. Hoiom, Anoka County Surveyor  
by Charles F. Setzen, Deputy



DRAINAGE & UTILITY EASEMENT ARE SHOWN THUS:



- LEGEND
- - FOUND IRON MONUMENT
  - - IRON MONUMENT SET WITH CAP #14889, UNLESS OTHERWISE NOTED
  - (P) - DENOTES PLAT DISTANCE FROM HAMILTONS ADDITION TO "MECHANICSVILLE"
  - (M) - DENOTES MEASURED DISTANCE

482917.001 Tomens  
Office of REGISTRAR OF TITLES  
STATE OF MINNESOTA  
COUNTY OF ANOKA  
I hereby certify that the within instrument was filed in this office on 13th day, 2005  
at 2:13 o'clock P. M.  
Maureen J. Davine, Registrar of Titles  
By GKE  
Deputy Registrar of Titles

I HEREBY CERTIFY THAT THE CURRENT AND DELINQUENT TAXES ON THE LANDS DESCRIBED WITHIN ARE PAID AND THE TRANSFER IS ENTERED  
May 13 2005  
MAUREEN J. DAVINE  
REGISTER OF TITLES  
BY lgp  
DEPUTY PROPERTY TAX ADMINISTRATOR

**ULTEIG ENGINEERS, INC.**  
5201 EAST RIVER ROAD  
SUITE 308  
MINNEAPOLIS, MINNESOTA 55421  
PHONE (763) 571-2500 FAX (763) 571-1168  
\$189.50