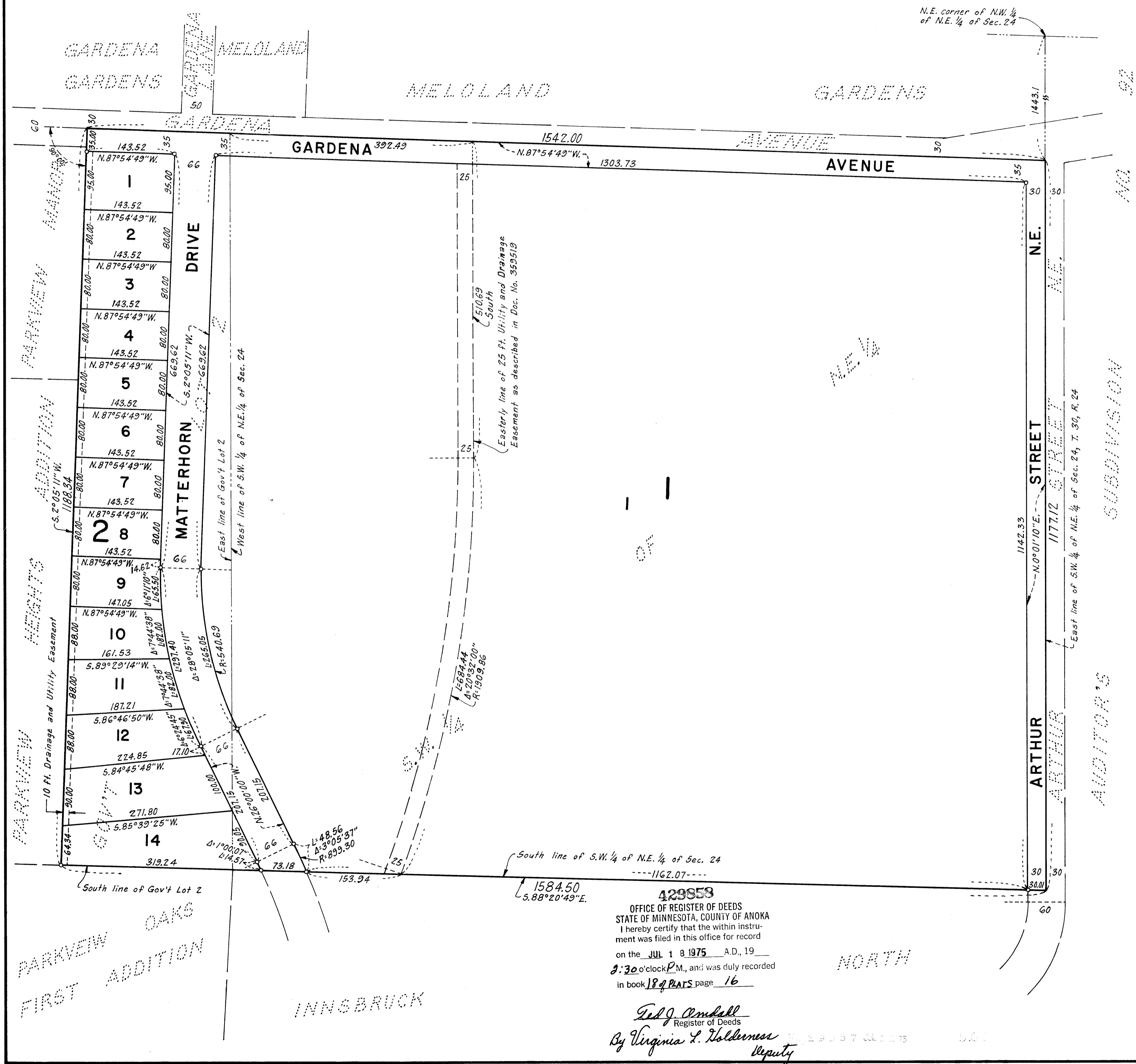


GRACE HIGH SCHOOL ADDITION

BEARINGS SHOWN ARE ASSUMED JANUARY, 1975 EGAN, FIELD & NOWAK, INC. SURVEYORS
° DENOTES IRON MONUMENT SCALE: 1 INCH EQUALS 100 FEET
CITY OF FRIDLEY, ANOKA COUNTY



Know all men by these presents that The Archdiocese of St. Paul and Minneapolis, a Minnesota Corporation, owner and proprietor of the following described property situated in the State of Minnesota and County of Anoka to wit:

That part of Government Lot 2 and of the Southwest 1/4 of the Northeast 1/4 of Section 24, Township 30, Range 24, described as follows: Commencing at a point on the east line of the Southwest 1/4 of the Northeast 1/4 of Section 24, Township 30, Range 24 which point is 1443.1 feet South of the Northeast corner of the Northwest 1/4 of the Northeast 1/4 of said Section 24; thence proceeding West 1542.0 feet; thence proceeding South at right angles to this last course for a distance of 1187.0 feet, more or less, to the south line of said Government Lot 2, and proceeding thence East on said south line to the Southeast corner of the said Southwest 1/4 of the Northeast 1/4; thence proceeding North on the east line of the said Southwest 1/4 of the Northeast 1/4 to the point of commencement, according to the United States Government Survey thereof; has caused the same to be surveyed and platted as GRACE HIGH SCHOOL ADDITION and do hereby donate and dedicate to the public for public use forever the avenue, drive, street and easements for drainage and utility purposes as shown on the plat. In witness whereof said The Archdiocese of St. Paul and Minneapolis has caused these presents to be signed by its proper officers and its corporate seal to be hereunto affixed this 19TH day of MAY, A. D. 1975.

THE ARCHDIOCESE OF ST. PAUL AND MINNEAPOLIS

by Ambrose V. Hayden vice president by John F. Kinney secretary
Ambrose V. Hayden John F. Kinney

STATE OF MINNESOTA
COUNTY OF HENNEPIN The foregoing instrument was acknowledged before me this 19TH day of MAY, 1975 by Ambrose V. Hayden, vice president and John F. Kinney, secretary, of The Archdiocese of St. Paul and Minneapolis, a Minnesota corporation, on behalf of the corporation.

Jerome H. Julius
Notary Public, HENNEPIN County, Minnesota.
My commission expires JANUARY 21, 1977

I hereby certify that I have surveyed and platted the property described on this plat as GRACE HIGH SCHOOL ADDITION: that this plat is a correct representation of said survey; that all distances are correctly shown on the plat in feet and hundredths of a foot; that all monuments have been correctly placed in the ground as shown; that the outside boundary line are correctly designated on the plat, and that there are no wet lands or public highways to be designated on the plat, other than as shown thereon.

Vernon A. Nickols
Vernon A. Nickols, Land Surveyor Minnesota Registration No. 9053

STATE OF MINNESOTA
COUNTY OF HENNEPIN The foregoing instrument was acknowledged before me this 27TH day of March, 1975 by Vernon A. Nickols, Land Surveyor.

Chris Kuntz
CHRIS KUNTZ, Notary Public, Hennepin County, Minnesota.
My commission expires March 4, 1982.

We hereby certify that the City Council of the City of Fridley, Anoka County, Minnesota, duly accepted and approved this plat of GRACE HIGH SCHOOL ADDITION, at a regular meeting thereof held this 16TH day of DECEMBER, A. D. 1974

CITY OF FRIDLEY, ANOKA COUNTY, MINNESOTA
by William J. Neer mayor by Maxine Brunson clerk
Checked and approved this 18TH day of July, A. D. 1975.

Roland W. Anderson
Roland W. Anderson
Anoka County Surveyor

"NO DELINQUENT TAXES AND TRANSFER ENTERED"
July 18 1975
Charles R. Lefebvre
Auditor, Anoka County
Nancy C. Casper
Deputy

429853
OFFICE OF REGISTER OF DEEDS
STATE OF MINNESOTA, COUNTY OF ANOKA
I hereby certify that the within instrument was filed in this office for record on the JUL 18 1975 A. D., 19 9:30 o'clock P.M., and was duly recorded in book 184 PLATS page 16

Ed J. Campbell
Register of Deeds
By Virginia L. Waldemose Deputy

PARKVIEW FIRST ADDITION
OAKS
INNSBRUCK

NORTH