

GREEN HAVEN PARKWAY ADDITION

KNOW ALL PERSONS BY THESE PRESENTS: That AD Center, LLC, a Minnesota limited liability company, owner of the following described property:

Tract A, REGISTERED LAND SURVEY NO. 258, Anoka County, Minnesota.

AND

Lot 2, Block 1, and Lot 1, Block 2, all in ENIVA ADDITION, said Anoka County, Minnesota.

AND the City of Anoka, a Minnesota Municipal Corporation under the laws of the State of Minnesota, owner of the following described property:

Outlots C and E, ENIVA ADDITION, Anoka County, Minnesota.

Have caused the same to be surveyed and platted as GREEN HAVEN PARKWAY ADDITION and do hereby dedicate to the public for public use the parkway and the drainage and utility easements as shown on this plat.

In witness whereof said AD Center LLC, a Minnesota limited liability company, has caused these presents to be signed by its proper officer this 10th day of August, 2016.

AD CENTER, LLC

[Signature]
Duane Lund, Manager

STATE OF Minnesota

COUNTY OF Anoka

This instrument was acknowledged before me this 10th day of August, 2016 by Duane Lund, as Manager of AD Center, LLC, a Minnesota limited liability company, on behalf of the company.

[Signature]

[Signature]

Notary Public, Minnesota

My commission expires January 31, 2020

Also in witness whereof said City of Anoka, a Minnesota Municipal Corporation under the laws of the State of Minnesota, has caused these presents to be signed by its proper officers this 7th day of NOVEMBER, 2016.

CITY OF ANOKA

[Signature]
Phil Rice, as Mayor

[Signature]
Amy T. Oehlers, as City Clerk

STATE OF MINNESOTA

COUNTY OF ANOKA

This instrument was acknowledged before me this 7th day of NOVEMBER, 2016 by Phil Rice, as Mayor, and Amy T. Oehlers, as City Clerk, of the City of Anoka, a Minnesota Municipal corporation under the laws of the State of Minnesota, on behalf of the corporation.

[Signature]

[Signature]
SCOTT BAUMGARTNER

Notary Public, MINNESOTA

My commission expires JANUARY 31, 2020

I Charles R. Christopherson do hereby certify that this plat was prepared by me or under my direct supervision; that I am a duly Licensed Land Surveyor in the State of Minnesota; that this plat is a correct representation of the boundary survey; that all mathematical data and labels are correctly designated on this plat; that all monuments depicted on this plat have been, or will be correctly set within one year; that all water boundaries and wet lands, as defined in Minnesota Statutes, Section 505.01, Subd. 3, as of the date of this certificate are shown and labeled on this plat; and all public ways are shown and labeled on this plat.

Dated this 19th day of July, 2016.

[Signature]

Charles R. Christopherson, Licensed Land Surveyor
Minnesota License No. 18420

STATE OF MINNESOTA
COUNTY OF ANOKA

This instrument was acknowledged before me this 19th day of July, 2016 by Charles R. Christopherson.

[Signature]
Seth M. Monroe

Notary Public, Minnesota.

My commission expires January 31, 2019

City Council, City of Anoka, Minnesota

This plat of GREEN HAVEN PARKWAY ADDITION was approved and accepted by the City Council of the City of Anoka, Minnesota at a regular meeting thereof held this 20th day of JUNE, 2016, and said plat is in compliance with the provisions of Minnesota Statutes, Section 505.03, Subd. 2.

City Council, City of Anoka, Minnesota

By: [Signature], Mayor

By: [Signature], Clerk

Anoka Planning Commission

Be it known that at a meeting held on this 7th day of June, 2016, the Planning Commission of the City of Anoka, Minnesota, did hereby review and approve this plat of GREEN HAVEN PARKWAY ADDITION.

Planning Commission, City of Anoka, Minnesota

By: [Signature], Chairperson

By: [Signature], Secretary

ANOKA COUNTY SURVEYOR

I hereby certify that in accordance with Minnesota Statutes, Section 505.021, Subd. 11, this plat has been reviewed and approved this 15th day of DECEMBER, 2016.

[Signature]
Larry D. Holm,
Anoka County Surveyor

ANOKA COUNTY AUDITOR/TREASURER

Pursuant to Minnesota Statutes, Section 505.021, Subd. 9, taxes payable in the year 2016 on the land hereinbefore described have been paid. Also, pursuant to Minnesota Statutes, Section 272.12, there are no delinquent taxes and transfer entered this 15th day of December, 2016.

[Signature]
Jonell M. Sawyer
Property Tax Administrator

By: [Signature], Deputy

ANOKA COUNTY RECORDER/REGISTRAR OF TITLES

County of Anoka, State of Minnesota

I hereby certify that this plat of GREEN HAVEN PARKWAY ADDITION was filed in the office of the County Recorder/Registrar of Titles for public record on this 15th day of December, 2016, at 3:29 o'clock P.M. and was duly recorded in Book 22 of forms Page 43, as Document Number 544549.006.

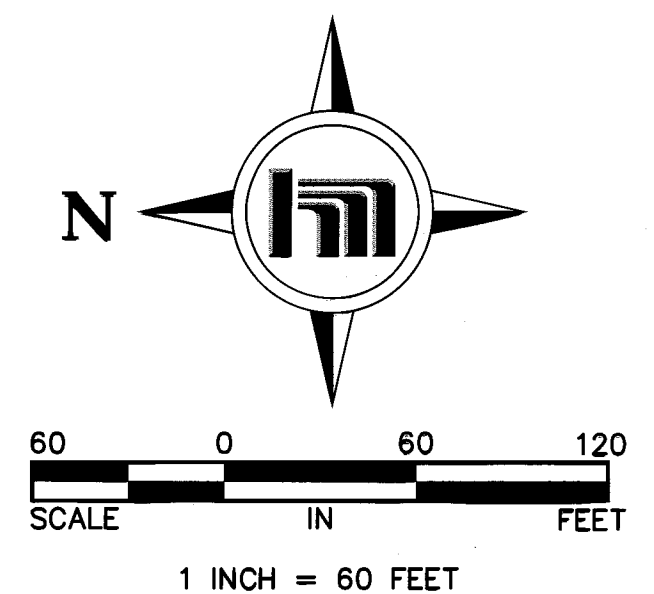
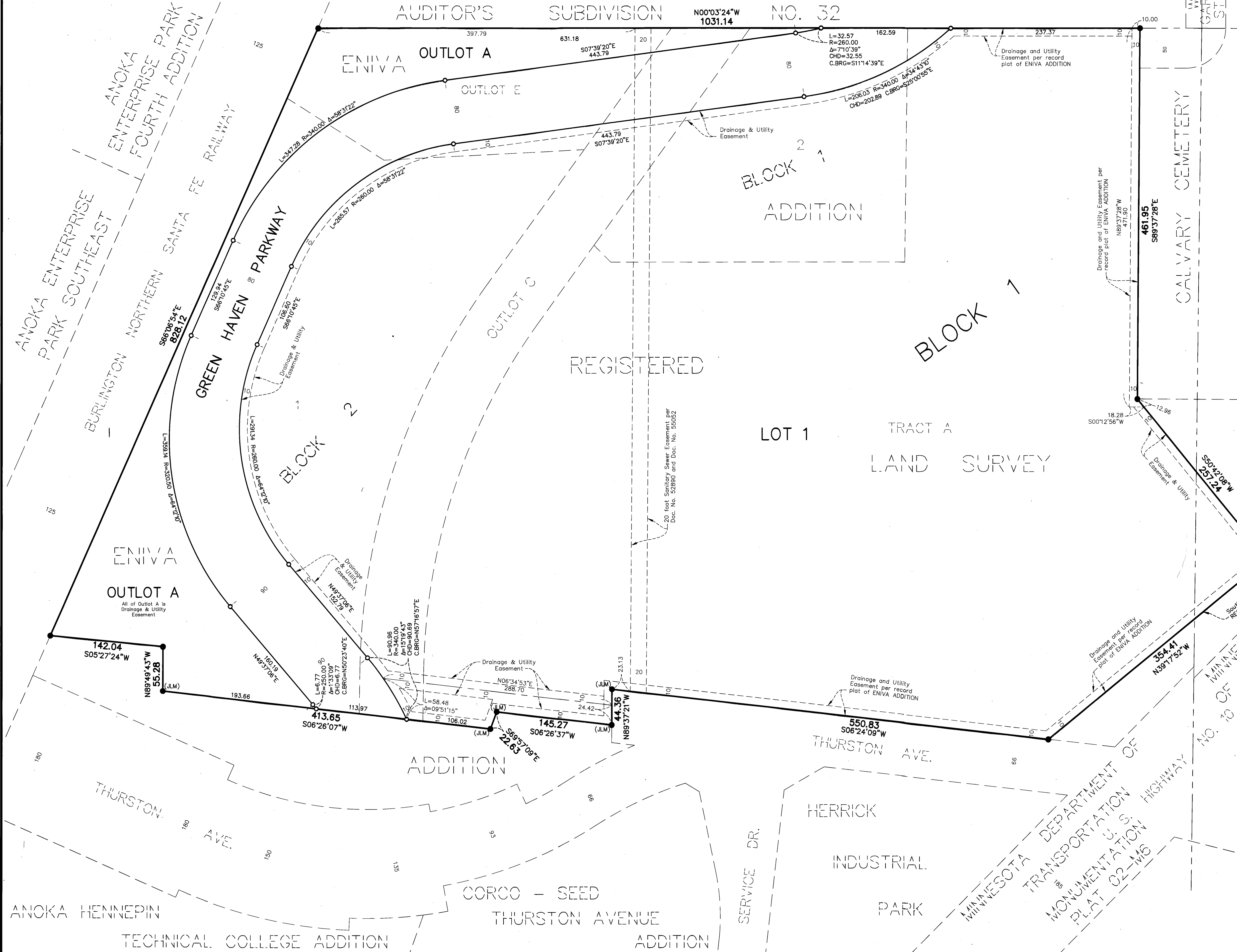
[Signature]
Jonell M. Sawyer
County Recorder/Registrar of Titles

By: [Signature], Deputy

GREEN HAVEN PARKWAY ADDITION

Book 22 of Towns Pg 43 CITY OF ANOKA
COUNTY OF ANOKA
SEC. 35, T. 32, R. 25

AUDITOR'S SUBDIVISION NO. 32
N00°03'24"W
1031.14



- (JLM) Denotes Judicial Cast Iron Monument
- Denotes 1/2 inch by 14 inch iron monument set and marked with Minnesota License No. 18420.
- Denotes found iron monument

For the purposes of this plat the Southwesterly line of Tract A, REGISTERED LAND SURVEY NO. 258 is assumed to bear N39°17'52"W.