

# GREEN VALLEY PRESERVE

KNOW ALL PERSONS BY THESE PRESENTS: That Green Valley Development, LLP, a Minnesota limited liability partnership, owner of the following described property:  
The Northeast Quarter of the Southeast Quarter, Section 27, Township 34 North, Range 25 West, Anoka County, Minnesota.

Has caused the same to be surveyed and platted as GREEN VALLEY PRESERVE and does hereby dedicate to the public for public use the public ways and the drainage and utility easements as shown by this plat. Also dedicating to the County of Anoka the right of access onto County State Aid Highway No. 28 as shown on this plat.

In witness whereof said Green Valley Development, LLP, a Minnesota limited liability partnership, has caused these presents to be signed by its proper officer this 9th day of October, 2015.

GREEN VALLEY DEVELOPMENT, LLP

*Josh Savageau*  
Josh Savageau, President

STATE OF MINNESOTA  
COUNTY OF Anoka

This instrument was acknowledged before me this 9th day of October, 2015 by Terry L. Buchanan, President of Green Valley Development, LLP, a Minnesota limited liability partnership, on behalf of the partnership.

*Claudia E. [Signature]*  
Notary Public, Anoka County, Minnesota  
My Commission Expires January 31, 2020

I Eric R. Vickaryous do hereby certify that this plat was prepared by me or under my direct supervision; that I am a duly Licensed Land Surveyor in the State of Minnesota; that this plat is a correct representation of the boundary survey; that all mathematical data and labels are correctly designated on this plat; that all monuments depicted on this plat have been, or will be correctly set within one year; that all water boundaries and wet lands, as defined in Minnesota Statutes, Section 505.01, Subd. 3, as of the date of this certificate are shown and labeled on this plat; and all public ways are shown and labeled on this plat.

Dated this 6th day of October, 2015.

*Eric R. Vickaryous*  
Eric R. Vickaryous, Licensed Land Surveyor  
Minnesota License Number 44125

STATE OF MINNESOTA  
COUNTY OF Anoka

This instrument was acknowledged before me this 6th day of OCTOBER, 2015 by Eric R. Vickaryous.

*Darlene A. Jones*  
Notary Public, Anoka County, Minnesota  
My Commission Expires 1/21/2020

CITY COUNCIL, CITY OF ST. FRANCIS, MINNESOTA

This plat of GREEN VALLEY PRESERVE was approved and accepted by the City Council of the City of St. Francis, Minnesota at a regular meeting thereof held this 2nd day of March, 2015, and said plat is in compliance with the provisions of Minnesota Statutes, Section 505.03, Subd. 2.

CITY COUNCIL, CITY OF ST. FRANCIS, MINNESOTA

By: *[Signature]* Mayor

By: *[Signature]* Clerk



COUNTY SURVEYOR

I hereby certify that in accordance with Minnesota Statutes, Section 505.021, Subd. 11, this plat has been reviewed and approved this 10th day of December, 2015.

By: *Larry D. Holium* by *Charles F. Reizen*, Deputy  
Larry D. Holium  
Anoka County Surveyor

COUNTY AUDITOR/TREASURER

Pursuant to Minnesota Statutes, Section 505.021, Subd. 9, taxes payable in the year 2015 on the land hereinbefore described have been paid. Also, pursuant to Minnesota Statutes, Section 272.12, there are no delinquent taxes and transfer entered this 10th day of Dec, 2015.

*Jonell M. Sawyer*  
Property Tax Administrator

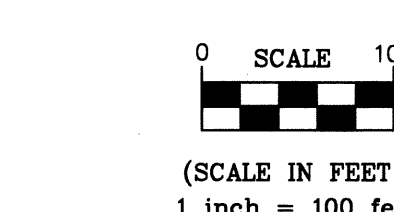
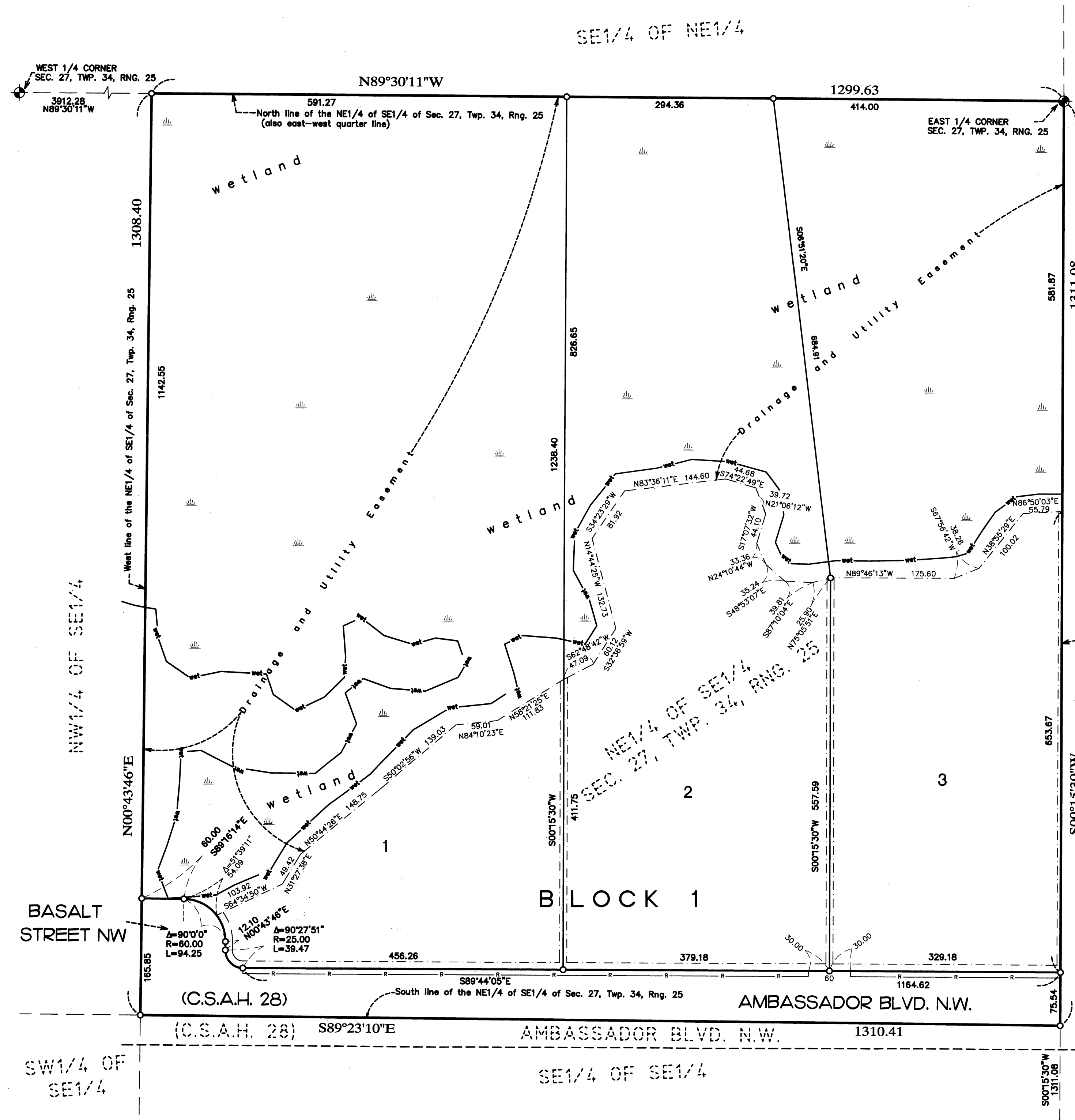
By: *Becky Hanson*, Deputy

COUNTY RECORDER/REGISTRAR OF TITLES  
County of Anoka, State of Minnesota

I hereby certify that this plat of GREEN VALLEY PRESERVE was filed in the office of the County Recorder/Registrar of Titles for public record on this 10th day of Dec, 2015, at 3:50 o'clock p.M. and was duly recorded in Book 78 Page 45, as Document 2125159.001

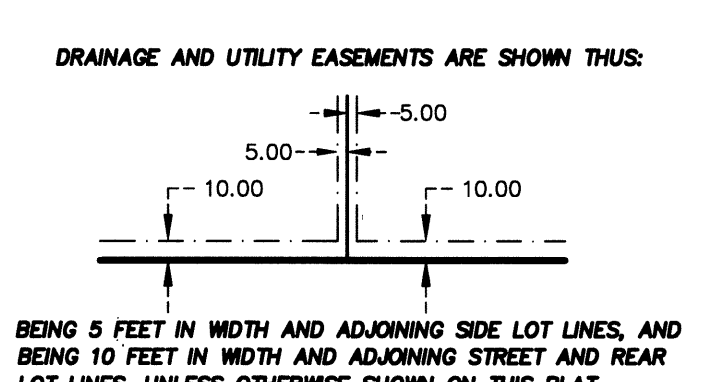
*Jonell M. Sawyer*  
County Recorder/Registrar of Titles

By: *Becky Hanson*, Deputy



NORTH

FOR THE PURPOSES OF THIS PLAT, THE EAST LINE OF THE NORTHEAST QUARTER OF SOUTHEAST QUARTER, SEC. 27, TWP. 34, RNG. 25, ANOKA COUNTY, MINNESOTA, IS ASSUMED TO BEAR S00°15'30"W.



⊕ DENOTES COUNTY MONUMENT  
○ DENOTES 1/2 INCH IRON PIPE MARKED BY LICENSE NO. 44125.

ALL MONUMENT REQUIRED BY MINNESOTA STATUTE WILL BE SET WITHIN ONE YEAR OF THE RECORDING DATE OF THIS PLAT, AND SHALL BE EVIDENCED BY A 1/2" INCH BY 14 INCH IRON PIPE MARKED BY RLS 44125.

— DENOTES ACCESS DEDICATED TO ANOKA COUNTY  
--- DENOTES EDGE OF DELINEATED WET LAND (as delineated by Ken Arndt in June, 2014)



#56.00