

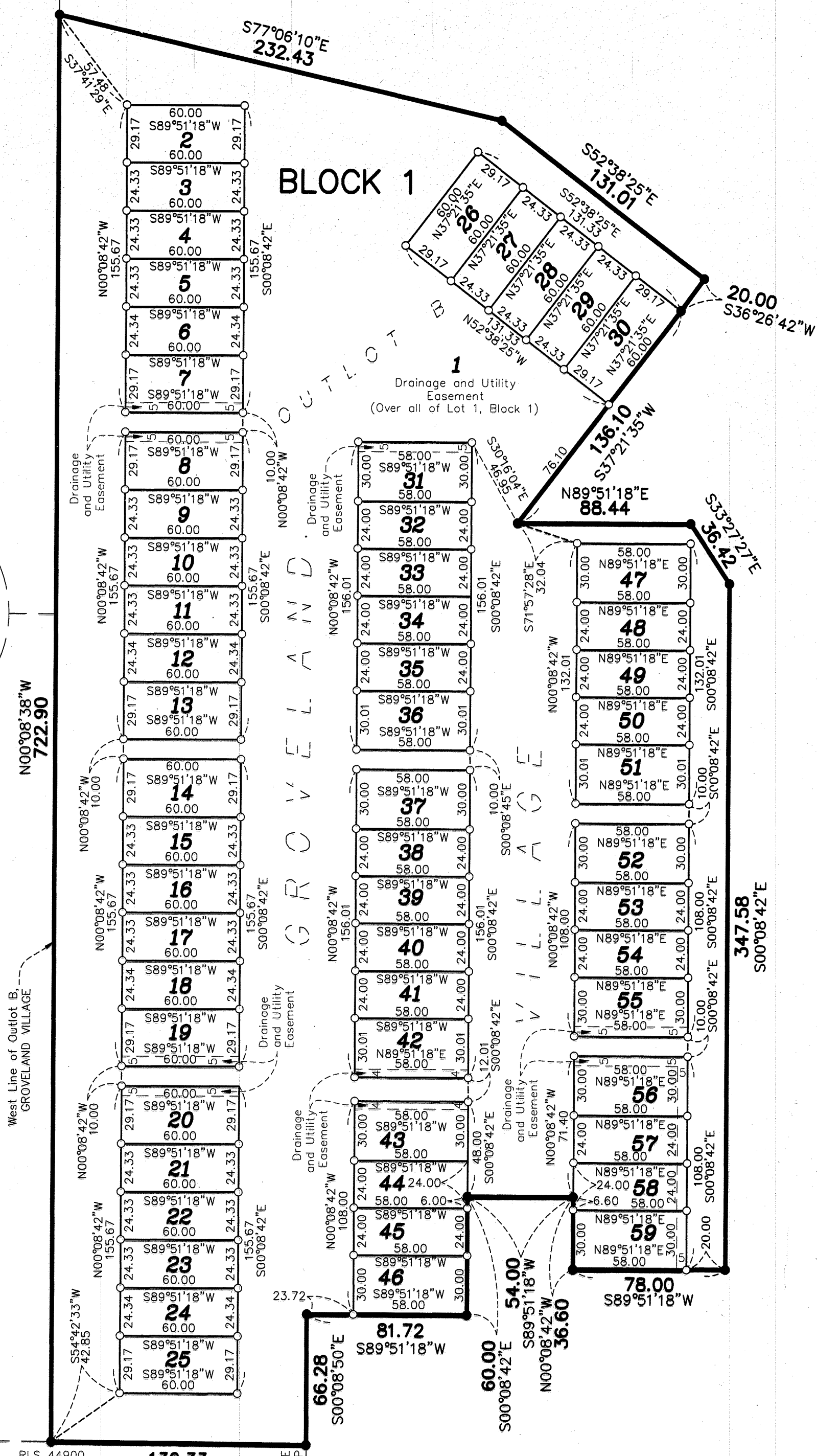
# GROVELAND VILLAGE SECOND ADDITION

ADDITION

ROSEYS

GROVELAND VILLAGE

JONATHAN'S  
1ST ADDITION



KNOW ALL PERSONS BY THESE PRESENTS: That M/I Homes of Minneapolis/St. Paul, LLC, a Delaware limited liability company, owner of the following described property:

OUTLOT B, GROVELAND VILLAGE, according to the recorded plat thereof, Anoka County, Minnesota.

Has caused the same to be surveyed and platted as GROVELAND VILLAGE SECOND ADDITION and does hereby dedicate to the public for public use the drainage and utility easements as shown on this plat.

In witness whereof said M/I Homes of Minneapolis/St. Paul, LLC, a Delaware limited liability company, has caused these presents to be signed by its proper officer this 17 day of March, 2022.

M/I HOMES OF MINNEAPOLIS/ST. PAUL, LLC

Gary M. White  
Area President  
Gary M. White, Area President

STATE OF Minnesota  
COUNTY OF Hennepin

This instrument was acknowledged before me on March 7, 2022 by Gary M. White, as Area President of M/I Homes of Minneapolis/St. Paul, LLC, a Delaware limited liability company, on behalf of the company.

Thomas R. Balluff (Signed)  
Ann M. Pellett (Printed)  
Notary Public,  
My commission expires Jan 31, 2024

I, Thomas R. Balluff do hereby certify that this plat was prepared by me or under my direct supervision; that I am a duly Licensed Land Surveyor in the State of Minnesota; that this plat is a correct representation of the boundary survey; that all mathematical data and labels are correctly designated on this plat; that all monuments depicted on this plat have been, or will be correctly set within one year; that all water boundaries and wet lands, as defined in Minnesota Statutes, Section 505.01, Subd. 3, as of the date of this certificate are shown and labeled on this plat; and all public ways are shown and labeled on this plat.

Dated this 4<sup>th</sup> day of MARCH, 2022.

Thomas R. Balluff  
Thomas R. Balluff, Licensed Land Surveyor  
Minnesota License No. 40361

STATE OF Minnesota  
COUNTY OF Anoka

This instrument was acknowledged before me on March 4, 2022 by Thomas R. Balluff.

Cynthia J. Merical (Signed)  
Cynthia J. Merical (Printed)  
Notary Public, Hennepin County, Minnesota  
My commission expires January 31, 2025

CITY COUNCIL, CITY OF BLAINE, MINNESOTA

This plat of GROVELAND VILLAGE SECOND ADDITION was approved and accepted by the City Council of the City of Blaine, Minnesota at a regular meeting thereof held this 20<sup>th</sup> day of December, 2021, and said plat is in compliance with the provisions of Minnesota Statutes, Section 505.03, Subd. 2.

CITY COUNCIL, CITY OF BLAINE, MINNESOTA  
By: [Signature] Mayor  
By: [Signature] Clerk

COUNTY SURVEYOR

I hereby certify that in accordance with Minnesota Statutes, Section 505.021, Subd. 11, this plat has been reviewed and approved this 14<sup>th</sup> day of April, 2022.

David M. Ziegemeier  
David M. Ziegemeier  
Anoka County Surveyor

COUNTY AUDITOR/TREASURER

Pursuant to Minnesota Statutes, Section 505.021, Subd. 9, taxes payable in the year 2022 on the land hereinbefore described have been paid. Also, pursuant to Minnesota Statutes, Section 272.12, there are no delinquent taxes and transfer entered this 14 day of April, 2022.

Pamela J. LeBlanc  
Property Tax Administrator  
By: Holly Hornehan Deputy

COUNTY RECORDER/REGISTRAR OF TITLES

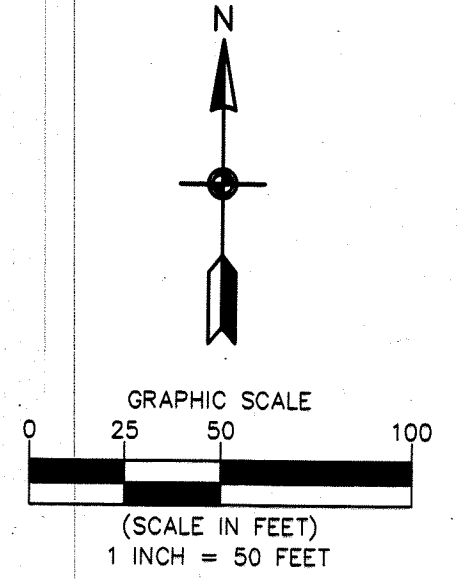
County of Anoka, State of Minnesota

I hereby certify that this plat of GROVELAND VILLAGE SECOND ADDITION was filed in the office of the County Recorder/Registrar of Titles for public record on this 14<sup>th</sup> day of April, 2022, at 1:00 o'clock P.M. and was duly recorded as Document Number 2362203.001.

Pamela J. LeBlanc  
County Recorder/Registrar of Titles  
By: Holly Hornehan Deputy

For the purposes of this plat, the West line of Outlot B, GROVELAND VILLAGE, is assumed to bear N00°08'38"W

- Denotes 5/8 inch by 14 inch Rebar, set or to be set within one year of recording of this plat and marked with license number 40361
- Denotes Found 5/8 inch rebar marked with RLS 40361 unless otherwise noted



\$156.00