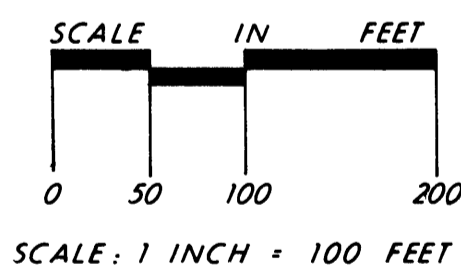
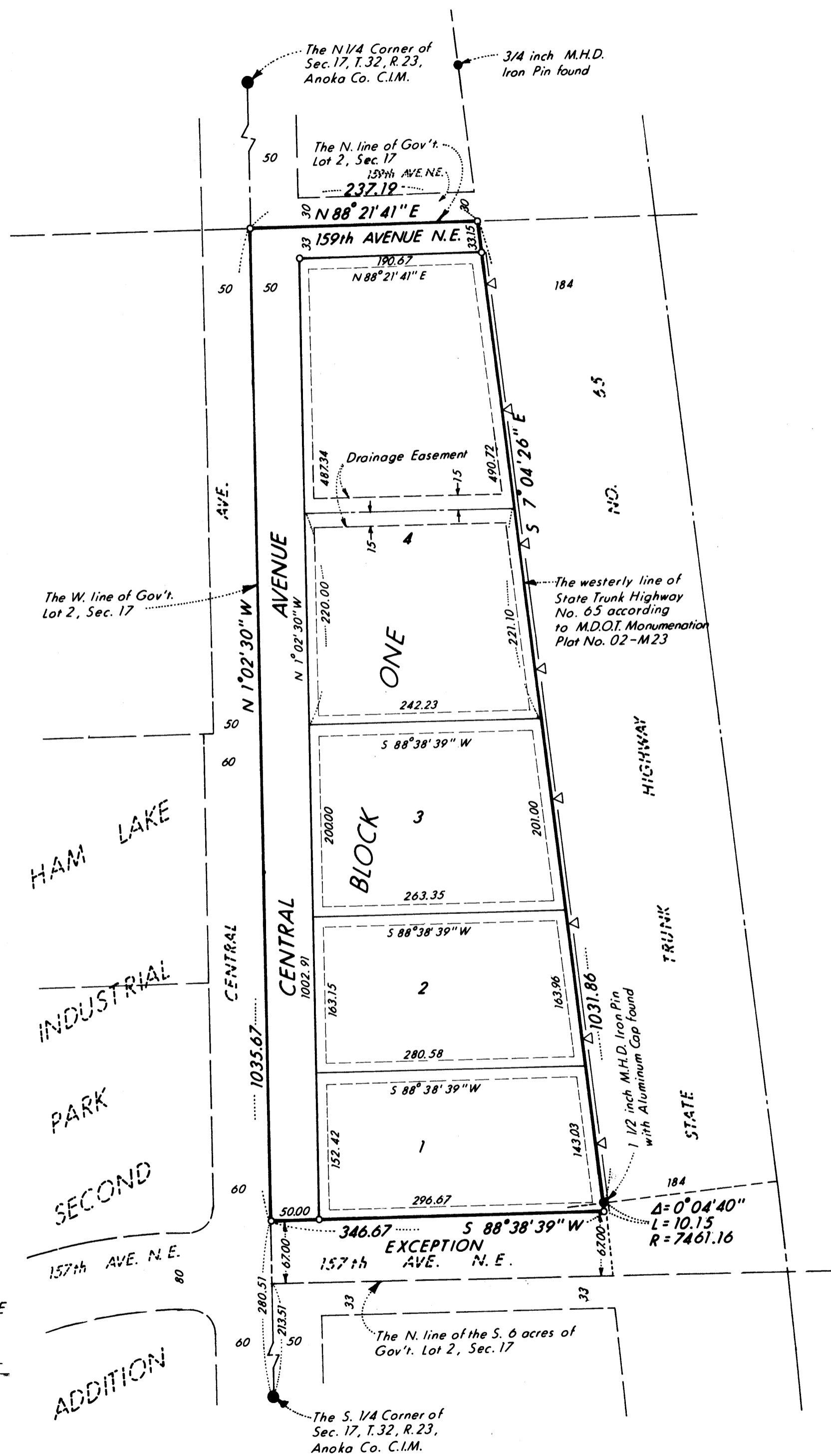
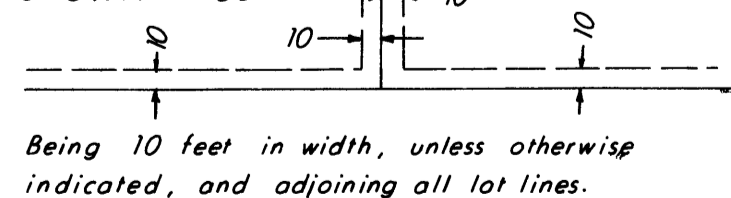


HAM LAKE INDUSTRIAL PARK THIRD ADDITION

City of Ham Lake, County of Anoka



DRAINAGE & UTILITY EASEMENTS ARE SHOWN THUS:



Being 10 feet in width, unless otherwise indicated, and adjoining all lot lines.

BEARING NOTE:

Orientation of this bearing system is the Minnesota State Plane Coordinate System, South Zone.

- Denotes iron monument capped RLS 10832
- △ Denotes right of access dedicated to the State of Minnesota

KNOW ALL PERSONS BY THESE PRESENTS that the City of Ham Lake, a Political Subdivision, fee owner of the following described property situated in the County of Anoka, State of Minnesota:

All that part of Government Lot 2, Section 17, Township 32, Range 23, Anoka County, Minnesota, lying north of the south 6 acres thereof and west of the westerly right-of-way of State Trunk Highway No. 65, according to Minnesota Department of Transportation Monumentation Plat No. 02-M23 on file and of record in the office of the County Recorder in and for said county. Except the south 67.00 feet thereof.

Has caused the same to be surveyed, platted and known as HAM LAKE INDUSTRIAL PARK THIRD ADDITION and does hereby donate and dedicate to the public for public use forever the avenues and utility and drainage easements as shown on this plat; also dedicating to the State of Minnesota the right of access to State Trunk Highway No. 65 from Lots 1, 2, 3 and 4 of Block 1 as shown on the plat. In witness whereof said City of Ham Lake, a Political Subdivision, has caused these presents to be signed by Dennis J. Landborg, Mayor, and Doris A. Nivala, Clerk-Treasurer, and its corporate seal to be hereunto affixed this 24 day of June, 1985.

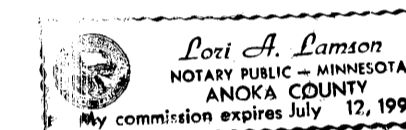
CITY OF HAM LAKE

Dennis J. Landborg
Dennis J. Landborg, Mayor

Doris A. Nivala
Doris A. Nivala, Clerk-Treasurer

STATE OF MINNESOTA)
COUNTY OF ANOKA)

The foregoing instrument was acknowledged before me this 24 day of June, 1985, by Dennis J. Landborg, Mayor, and Doris A. Nivala, Clerk-Treasurer of the City of Ham Lake, a Political Subdivision, on behalf of the City.



Lori A. Larson
Notary Public, Anoka County, Minnesota
My Commission Expires 7-12-91

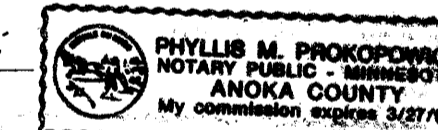
I hereby certify that I have surveyed and platted the land described on this plat as HAM LAKE INDUSTRIAL PARK THIRD ADDITION, that this plat is a correct representation of said survey; that all distances are correctly shown on said plat in feet and hundredths of a foot; that all monuments have been correctly placed in the ground as shown on said plat; that the outside boundary lines are correctly designated on said plat; and that there are no public highways or wetlands to be designated on said plat other than as shown thereon.

Ron Murphy
Ron Murphy, Land Surveyor
Minnesota Registration No. 10832

STATE OF MINNESOTA)
COUNTY OF ANOKA)

The foregoing instrument was acknowledged before me this 9th day of April, 1985, by Ron Murphy, Land Surveyor.

Phyllis M. Prokopowicz
Notary Public, Anoka County, Minnesota
My Commission Expires March 27, 1991

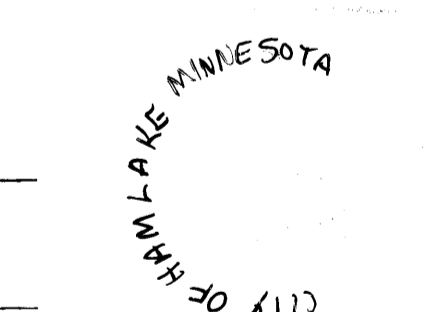


We hereby certify that the City Council of Ham Lake, Minnesota, duly accepted and approved the plat of HAM LAKE INDUSTRIAL PARK THIRD ADDITION at a regular meeting thereof held this 20 day of May, 1985.

CITY COUNCIL OF HAM LAKE, MINNESOTA

Dennis J. Landborg
Dennis J. Landborg, Mayor

Doris A. Nivala
Doris A. Nivala, Clerk-Treasurer



This plat of HAM LAKE INDUSTRIAL PARK THIRD ADDITION was checked and approved by me this 24th day of June, 1985.

Roland W. Anderson
Roland W. Anderson, Anoka County Surveyor

677791

OFFICE OF COUNTY RECORDER
STATE OF MINNESOTA, COUNTY OF ANOKA
I hereby certify that the within instrument was filed in this office for record on the JUN 24 1985 A.D., 19

9:55 o'clock A.M., and was duly recorded in book 35 of PLATS 16

Red J. Omdahl
County Recorder

By G. A. Swanson
Deputy

"NO DELINQUENT TAXES AND TRANSFER ENTERED"

June 24 1985
Charles R. DeFebvre
Auditor, Anoka County

By Jonell M. Sawyer
Deputy

I HEREBY CERTIFY THAT THE TAXES PAYABLE IN THE YEAR 1985 ON THE LANDS DESCRIBED WITHIN ARE PAID

Donald C. Bailes, M. Elstad
Anoka County Treasurer

COMSTOCK & DAVIS, INC.

CONSULTING ENGINEERS & LAND SURVEYORS