

HAMPTON ADDITION

CITY OF LINO LAKES
COUNTY OF ANOKA
SEC. 13, T. 31, R. 22

KNOW ALL PERSONS BY THESE PRESENTS: That Hampton Properties VIII, LLC, a Minnesota limited liability company, owner of the following described property:

The North 660 feet of the West 440 feet of the NW1/4 of the NW1/4 of Section 13, Township 31, Range 22, except the North 150 feet thereof, Anoka County, Minnesota.

Has caused the same to be surveyed and platted as HAMPTON ADDITION and does hereby dedicate to the public for public use the public ways and the drainage and utility easements as created by this plat. Also dedicating to the County of Anoka the right of access onto County State Aid Highway No. 54 as shown on this plat.

In witness whereof said Hampton Properties VIII, LLC, a Minnesota limited liability company, has caused these presents to be signed by its proper officer this 25 dayof November, 2025

HAMPTON PROPERTIES VIII, LLC

Joel T. Larson (Signature)Joel T. Larson its Chief manager
(Print name) (Title)STATE OF MINNESOTA
COUNTY OF RamseyThis instrument was acknowledged before me this 25 day of November, 2025 by JOEL LARSON, it's

of Hampton Properties VIII, LLC, a Minnesota limited liability company, on behalf of the company.

Susan F. Johnson (Signature)Susan F. Johnson (Print name)Notary Public, Ramsey County, MinnesotaMy Commission Expires 1/31/28

I, Jerrod Gustavus LeSavage do hereby certify that this plat was prepared by me or under my direct supervision; that I am a duly Licensed Land Surveyor in the State of Minnesota; that this plat is a correct representation of the boundary survey; that all mathematical data and labels are correctly designated on this plat; that all monuments depicted on this plat have been, or will be correctly set within one year; that all water boundaries and wet lands, as defined in Minnesota Statutes, Section 505.01, Subd. 3, as of the date of this certificate are shown and labeled on this plat; and all public ways are shown and labeled on this plat.

Dated this 25 day of November, 2025Jerrod Gustavus LeSavage
Jerrod Gustavus LeSavage, Licensed Land Surveyor
Minnesota License Number 58896STATE OF MINNESOTA
COUNTY OF HennepinThis instrument was acknowledged before me this 25 day of November, 2025 by Jerrod Gustavus LeSavage.Liz Pushing (Signature)Liz Pushing (Print name)Notary Public, Hennepin County, MinnesotaMy Commission Expires 1/31/29

CITY COUNCIL, CITY OF LINO LAKES, MINNESOTA

This plat of HAMPTON ADDITION was approved and accepted by the City Council of the City of Lino Lakes, Minnesota at a regular meeting thereof held this 13 day of October, 2025, and said plat is in compliance with the provisions of Minnesota Statutes, Section 505.03, Subd. 2.

CITY COUNCIL, CITY OF LINO LAKE, MINNESOTA

By: J. L. Harnett MayorBy: Roberta Colotti Clerk

ANOKA COUNTY SURVEYOR

I hereby certify that in accordance with Minnesota Statutes, Section 505.021, Subd. 11, this plat has been reviewed and approved this 30 day of December, 2025David M. Ziegler
David M. Ziegler
Anoka County Surveyor

ANOKA COUNTY AUDITOR/TREASURER

Pursuant to Minnesota Statutes, Section 505.021, Subd. 9, taxes payable in the year 2025 on the land hereinbefore described have been paid.Also, pursuant to Minnesota Statutes, Section 272.12, there are no delinquent taxes and transfer entered this 30 day ofDecember, 2025Pamela J LeBlanc

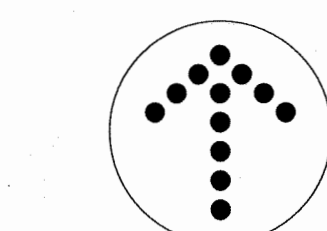
Property Tax Administrator

By: M. J. O'Connell DeputyANOKA COUNTY RECORDER/REGISTRAR OF TITLES
COUNTY OF ANOKA, STATE OF MINNESOTA

I hereby certify that this plat of HAMPTON ADDITION was filed in the office of the County Recorder/Registrar of Titles for public record on this

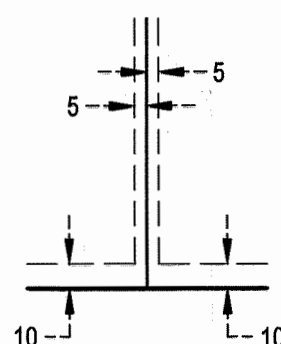
30 day of December, 2025 at 10:02 o'clock A.M. and was duly recorded as Document Number2456564.001Pamela J LeBlanc

County Recorder/Registrar of Titles

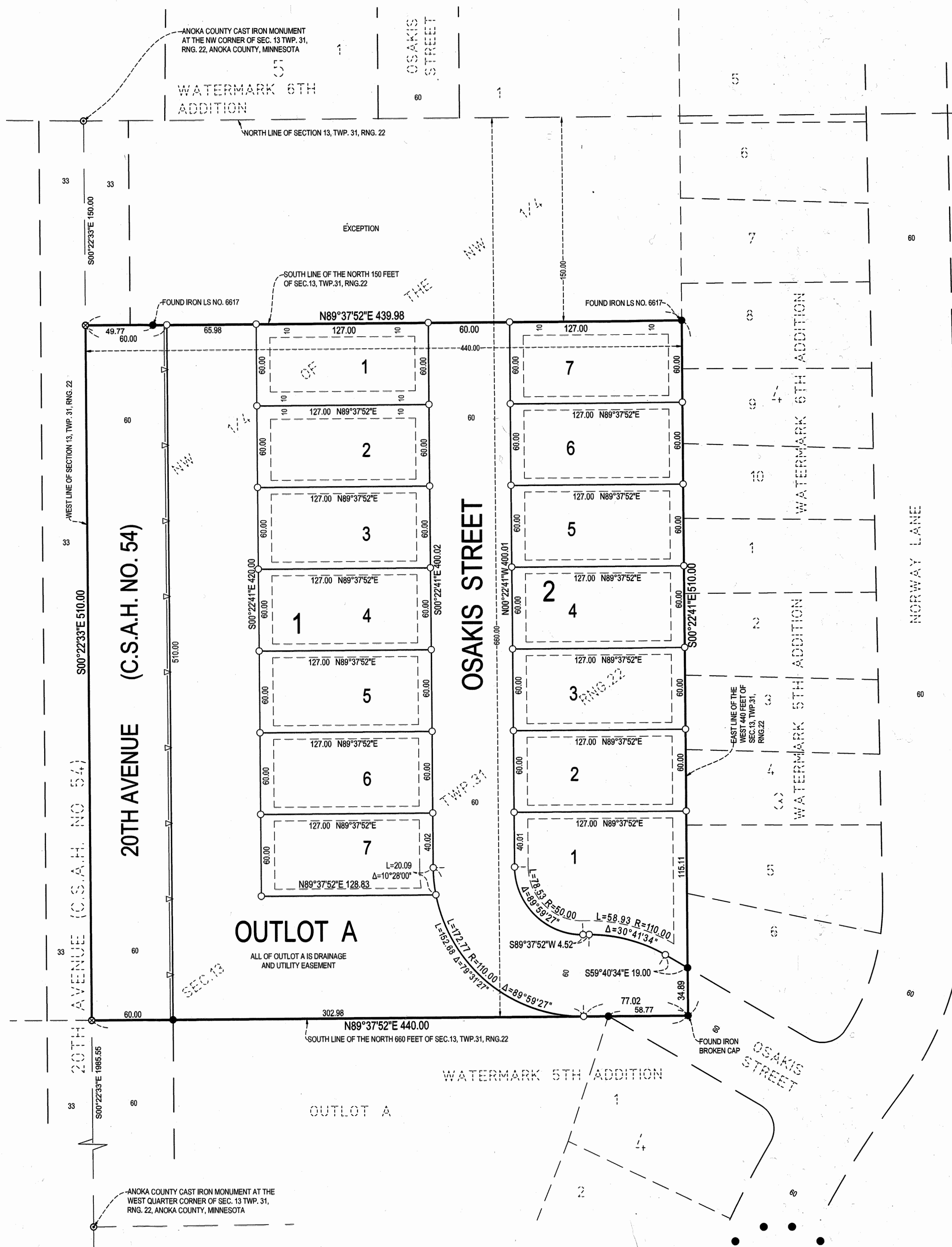
By: M. J. O'Connell DeputyNORTH
1 INCH = 50 FEET
SCALE IN FEET
0 50 100

For the purposes of this plat, the WEST LINE OF SECTION 13, T. 31, R. 22 is assumed to bear S00°22'33"E.

- ⊙ denotes set mag nail
- denotes 1/2 inch by 14 inch iron pipe monument set and marked by License No. 58896
- denotes 1/2 inch iron pipe monument found marked LS No. 40361 unless otherwise noted
- ⊙ denotes Anoka County Cast Iron Monument found
- △—△— denotes Right of Access dedicated to Anoka County

DRAINAGE AND UTILITY EASEMENTS
ARE SHOWN THUS:
(NOT TO SCALE)

BEING 5 FEET IN WIDTH AND ADJOINING SIDE LOT LINES, UNLESS OTHERWISE INDICATED, AND 10 FEET IN WIDTH AND ADJOINING RIGHT OF WAY LINES AND REAR LOT LINES UNLESS OTHERWISE INDICATED

LANDFORM
From Site to Finish