

OFFICE OF REGISTER OF DEEDS  
STATE OF MINNESOTA, COUNTY OF ANOKA

I hereby certify that the within map was filed in this office for record on the day of July, 1964, at 2:30 o'clock P.M., and was duly recorded in book 3, page 17.

*Robert A. Busch*  
Register of Deeds

By *Margaret K. ...*  
Secretary

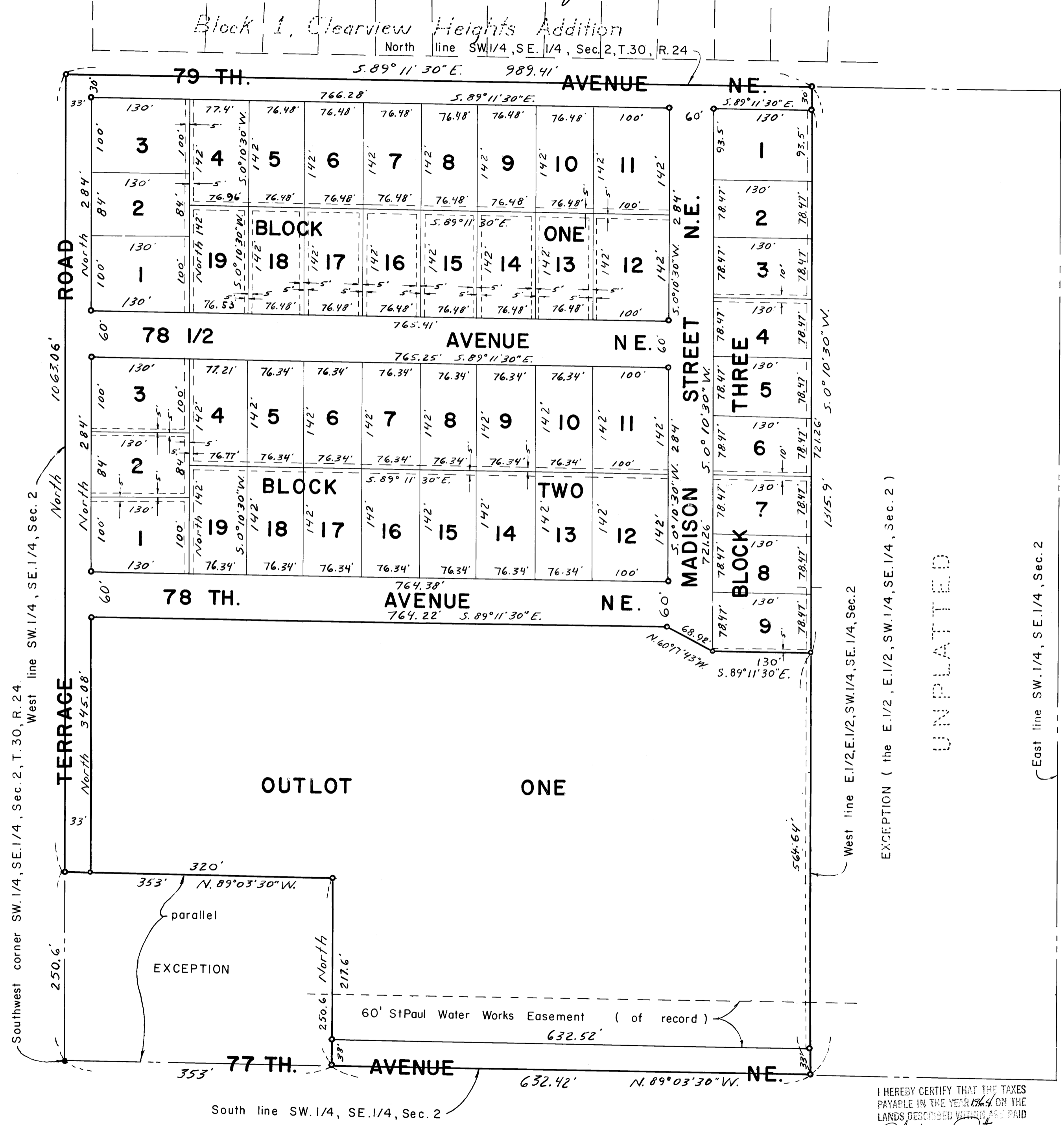
# HAN-DON FIRST ADDITION

Robert A. Busch - Surveyor

Scale: 1" inch = 100 feet  
° Indicates iron monument  
Bearings shown are assumed

ANOKA COUNTY, MINNESOTA

KNOW ALL MEN BY THESE PRESENTS: That Felix Daniels and Mary M. Daniels, his wife, fee owners, and John M. Hansen and Marjorie S. Hansen, his wife, contract purchasers, and Han-Don, Inc., a Minnesota Corporation, contract purchaser of the following described property, situated in the County of Anoka, State of Minnesota, to wit:



The Southwest Quarter of the Southeast Quarter (SW 1/4, SE 1/4) of Section 2, Township 30, Range 24, Anoka County, Minnesota, excepting therefrom the following described tracts: Beginning at the Southwest corner of said SW 1/4, SE 1/4, thence North along the West line of said SW 1/4, SE 1/4, a distance of 250.6 feet, thence East parallel with the South line of said SW 1/4, SE 1/4, a distance of 353.0 feet, thence South parallel with the West line of said SW 1/4, SE 1/4, a distance of 250.6 feet to the South line of said SW 1/4, SE 1/4, thence West along said South line to the point of beginning and also excepting the East Half of the East Half (E 1/2, E 1/2) of the said SW 1/4 of the SE 1/4.

Have caused the same to be surveyed and platted as HAN-DON FIRST ADDITION and do hereby donate and dedicate to the public for public use forever the street, road and avenues as shown on the annexed plat, also subject to drainage and utility easements as shown on the annexed plat.

In witness whereof, we have hereunto set our hands and affixed our seals, and Han-Don, Inc., has caused these presents to be signed by its proper officers and its corporate seal to be hereunto affixed this 17 day of July A.D., 1964.

In Presence Of:

*Joseph E. Wargo* and *Edward W. ...* as to *Felix Daniels* and *Mary M. Daniels*  
*Joseph E. Wargo* and *Peter Tema* as to *John M. Hansen* and *Marjorie S. Hansen*  
*Joseph E. Wargo* and *Peter Tema* as to *HAN-DON, INC.* its *Pres.* and *Robert W. Larsson* its *Sec. - Treas.*

COUNTY OF Anoka } ss. On this 17 day of July A.D. 1964, before me, a Notary Public, within and for said County and State, personally appeared Felix Daniels and Mary M. Daniels, husband and wife, to me personally known to be the persons described in and who executed the foregoing instrument, and acknowledged that they executed the same as their own free act and deed.

Notary Public, Anoka County, Minnesota. My Commission Expires ...

COUNTY OF Anoka } ss. On this 17 day of July A.D. 1964, before me, a Notary Public, within and for said County and State, personally appeared John M. Hansen and Marjorie S. Hansen, husband and wife, to me personally known to be the persons described in and who executed the foregoing instrument, and acknowledged that they executed the same as their own free act and deed.

Notary Public, Anoka County, Minnesota. My Commission Expires ...

COUNTY OF ANOKA } ss. On this 17 day of July A.D. 1964, before me, a Notary Public, within and for said County and State, personally appeared *John M. Hansen* and *Robert W. Larsson*, who each being duly sworn did say that they are respectively the *Pres.* and *Sec. - Treas.* of Han-Don, Inc., a Minnesota Corporation, the corporation named in the foregoing, and that said instrument was signed in behalf of said corporation by authority of its Board of Directors, and said *John M. Hansen* and said *Robert W. Larsson* acknowledged said instrument to be the free act and deed of said corporation.

Notary Public, Anoka County, Minnesota. My Commission Expires ...

I hereby certify that I have surveyed and platted the property described on this plat as HAN-DON FIRST ADDITION, that this plat is a true and correct representation of said survey, that all distances are correctly shown on the plat in feet and decimals of a foot, that all monuments for the guidance of future surveys have been correctly placed in the ground as shown on the annexed plat, and that there are no wet lands or public highways to be designated on said plat other than as shown thereon, that the outside boundary lines are correctly designated on the plat.

*Robert A. Busch*  
Registered Land Surveyor  
Minnesota Registration No. 7089

STATE OF MINNESOTA } ss. The above certificate was subscribed and sworn to before me, a Notary Public, within and for said County and State on this 17 day of July, 1964 A.D.

Notary Public, Anoka County, Minnesota, My Commission Expires ...

This plat was approved and accepted by the Village Council of the Village of Spring Lake Park, Minnesota at a regular meeting thereof held this 20 day of July, 1964 A.D.

By *Arnold Holz* its *Mayor* and by *John M. Cord* its *Clerk-Treasurer*  
*Bill Allen*, *...*

Accepted and approved on this 21 day of May, 1964 A.D., by the Planning Commission of the Village of Spring Lake Park.

By *J. L. Dahlquist* its *Village Secretary*

Checked and approved this 17<sup>th</sup> day of August, 1964 A.D.

*Robert V. Anderson*  
Anoka County Surveyor

I HEREBY CERTIFY THAT THE TAXES PAYABLE IN THE YEAR 1964 ON THE LANDS DESCRIBED WITHIN ARE PAID

*Robert A. Peterson*  
Auditor

TAXES PAID

25<sup>th</sup> day of Aug, 1964

*Bennett W. Campbell*  
Auditor, Anoka County, Minn.

By *Dwayne A. ...*

Note: utility and drainage easements indicated thus as shown on plat.