

HARMONY ESTATES 2ND ADDITION

KNOW ALL PERSONS BY THESE PRESENTS: That Hogdal Farm Limited Partnership, a Minnesota limited partnership, owner of the following described property:

All that part of Outlot A, HARMONY ESTATES lying within the Northwest Quarter and the Northeast Quarter of the Southwest Quarter, Section 22, Township 32, Range 23, Anoka County, Minnesota.

AND that Hogdal Homestead, Inc., a Minnesota corporation, owner of the following described property:

All that part of Outlot A, HARMONY ESTATES lying within the Northwest Quarter of the Southwest Quarter, Section 22, Township 32, Range 23, Anoka County, Minnesota.

Have caused the same to be surveyed and platted as HARMONY ESTATES 2ND ADDITION and do hereby dedicate to the public for public use the public ways and the drainage and utility easements as shown on this plat.

In witness whereof said Hogdal Farm Limited Partnership, a Minnesota limited partnership, has caused these presents to be signed by its proper partner this 15th day of December, 2016.

HOGDAL FARM LIMITED PARTNERSHIP
John B. Hogdal
 John B. Hogdal, General Partner

STATE OF Minnesota
 COUNTY OF Anoka

This instrument was acknowledged before me on December 15, 2016 by John B. Hogdal, General Partner of Hogdal Farm Limited Partnership, a Minnesota limited partnership, on behalf of the partnership.

Jennifer M. Moehlmann
 Jennifer M. Moehlmann
 Notary Public, Mille Lacs, MN
 My commission expires 1-31-19

In witness whereof said Hogdal Homestead, Inc., a Minnesota corporation, has caused these presents to be signed by its proper officer this 15th day of December, 2016.

HOGDAL HOMESTEAD, INC.
John B. Hogdal
 John B. Hogdal, President

STATE OF Minnesota
 COUNTY OF Anoka

This instrument was acknowledged before me on December 15, 2016 by John B. Hogdal, President of Hogdal Homestead, Inc., a Minnesota corporation, on behalf of the corporation.

Jennifer M. Moehlmann
 Jennifer M. Moehlmann
 Notary Public, Mille Lacs County, MN
 My commission expires 1-31-19

I, Thomas R. Balluff do hereby certify that this plat was prepared by me or under my direct supervision; that I am a duly Licensed Land Surveyor in the State of Minnesota; that this plat is a correct representation of the boundary survey; that all mathematical data and labels are correctly designated on this plat; that all monuments depicted on this plat have been, or will be correctly set within one year; that all water boundaries and wet lands, as defined in Minnesota Statutes, Section 505.01, Subd. 3, as of the date of this certificate are shown and labeled on this plat; and all public ways are shown and labeled on this plat.

Dated this 5th day of December, 2016.

Thomas R. Balluff
 Thomas R. Balluff, Licensed Land Surveyor
 Minnesota License No. 40361

STATE OF Minnesota
 COUNTY OF Anoka

This instrument was acknowledged before me on December 5, 2016 by Thomas R. Balluff.

Cynthia J. Morical
 Cynthia J. Morical
 Notary Public, Heavenly County, MN
 My commission expires Jan. 31, 2020

CITY COUNCIL, CITY OF HAM LAKE, MINNESOTA

This plat of HARMONY ESTATES 2ND ADDITION was approved and accepted by the City Council of the City of Ham Lake, Minnesota at a regular meeting thereof held this 16th day of May, 2016, and said plat is in compliance with the provisions of Minnesota Statutes, Section 505.03, Subd. 2.

CITY COUNCIL, CITY OF HAM LAKE, MINNESOTA

By *Steve Stahl* Mayor By *Demetrius* Clerk

COUNTY SURVEYOR

I hereby certify that in accordance with Minnesota Statutes, Section 505.021, Subd. 11, this plat has been reviewed and approved this 15th day of DECEMBER, 2016.

By *Larry D. Haum*
 Larry D. Haum, Anoka County Surveyor

COUNTY AUDITOR/TREASURER

Pursuant to Minnesota Statutes, Section 505.021, Subd. 9, taxes payable in the year 2016 on the land hereinbefore described have been paid. Also, pursuant to Minnesota Statutes, Section 272.12, there are no delinquent taxes and transfer entered this 15 day of December, 2016.

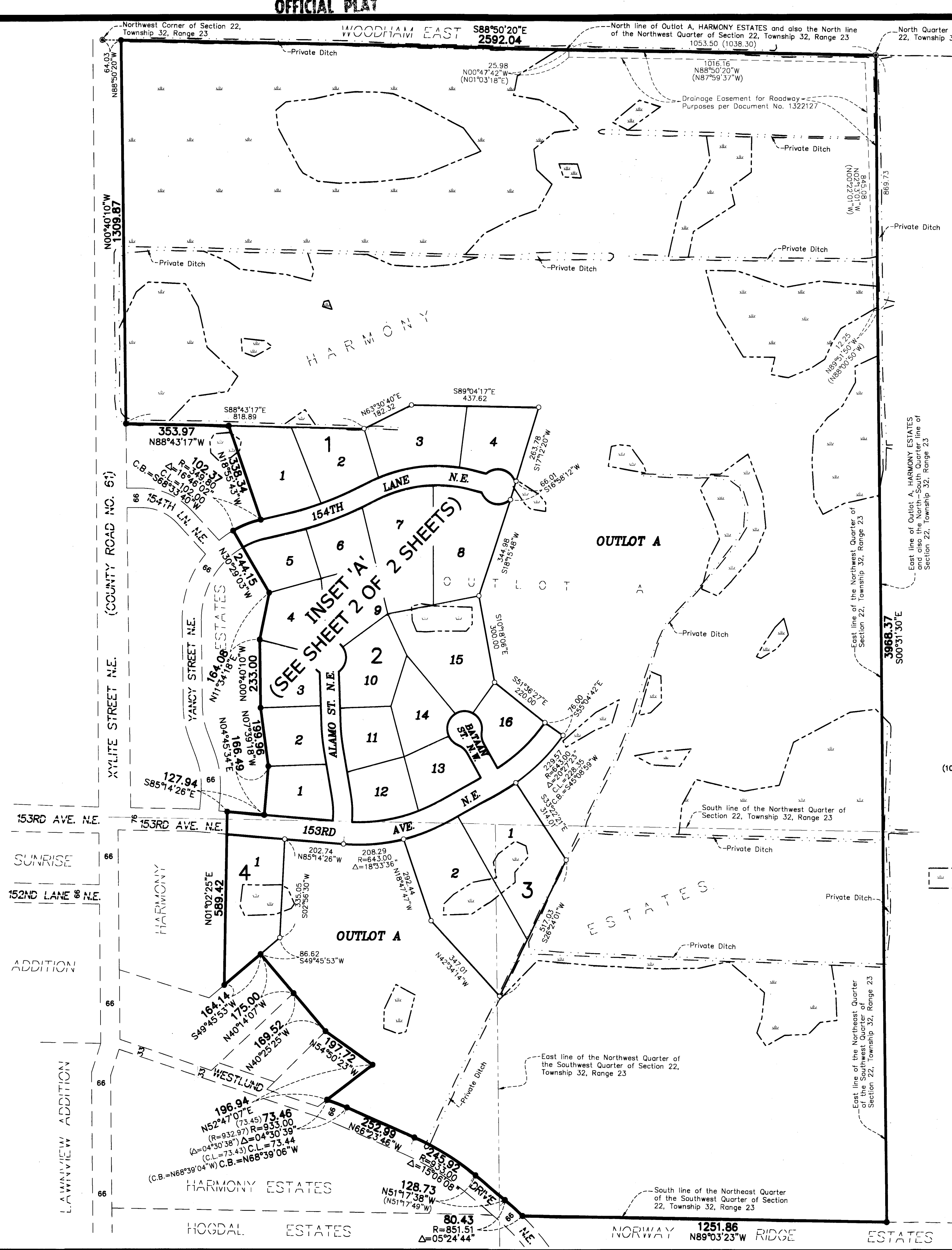
Jonell M. Sawyer
 Jonell M. Sawyer
 Property Tax Administrator
 By *Mass* Deputy

COUNTY RECORDER/REGISTRAR OF TITLES

County of Anoka, State of Minnesota

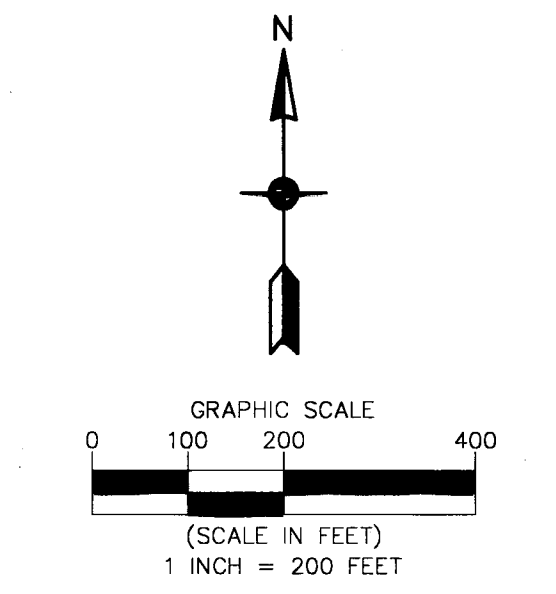
I hereby certify that this plat of HARMONY ESTATES 2ND ADDITION was filed in the office of the County Recorder/Registrar of Titles for public record on this 15 day of December, 2016, at 10:11 o'clock A.M. and was duly recorded in Book 734 Page 42, as Document Number 2158017.001

Jonell M. Sawyer
 Jonell M. Sawyer
 County Recorder/Registrar of Titles
 By *Mass* Deputy

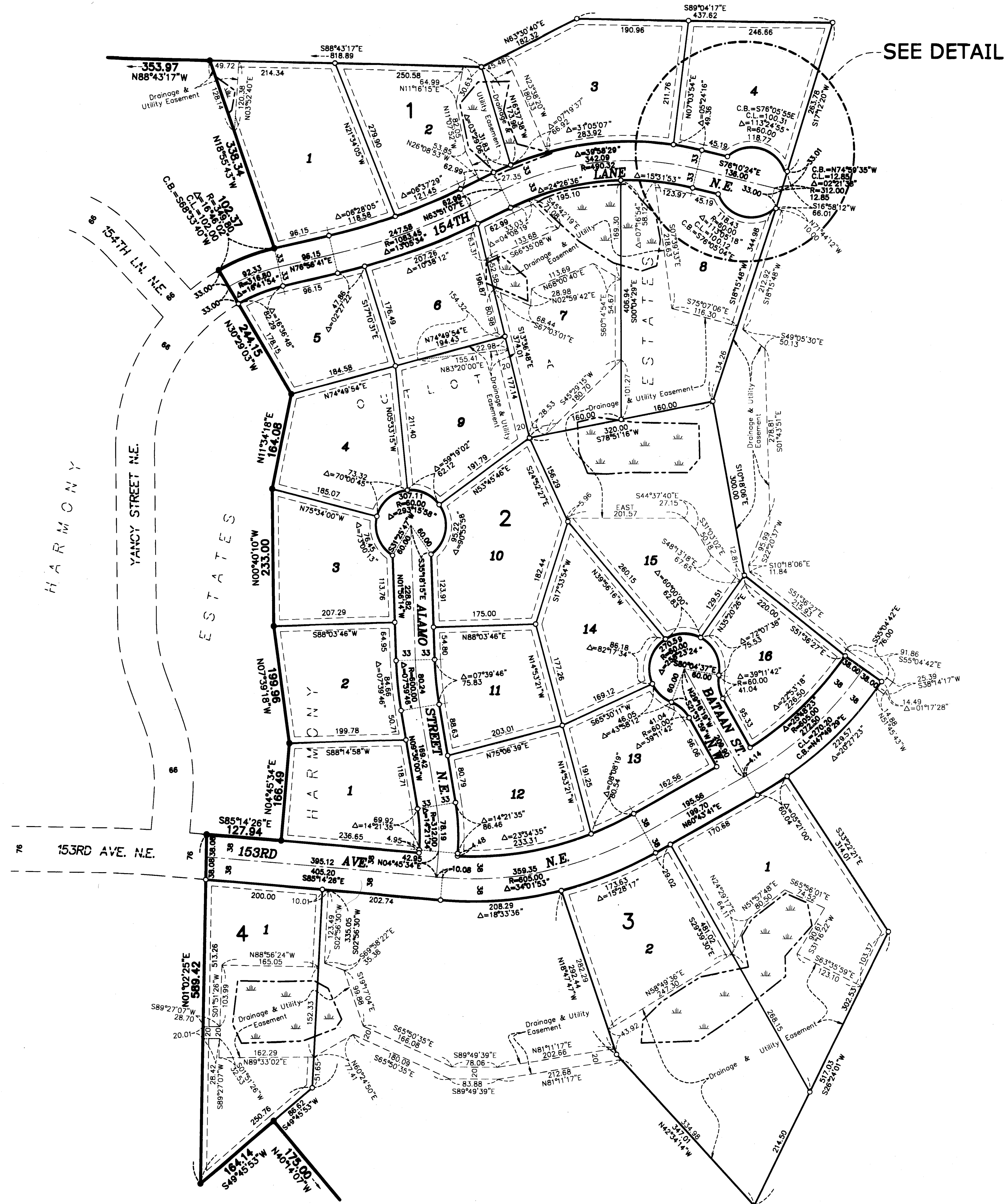


CITY OF HAM LAKE
 COUNTY OF ANOKA
 SEC. 22, TWP. 32, RGE. 23
 3k 79 of Abst page 42
 12/15/16 2158017.001

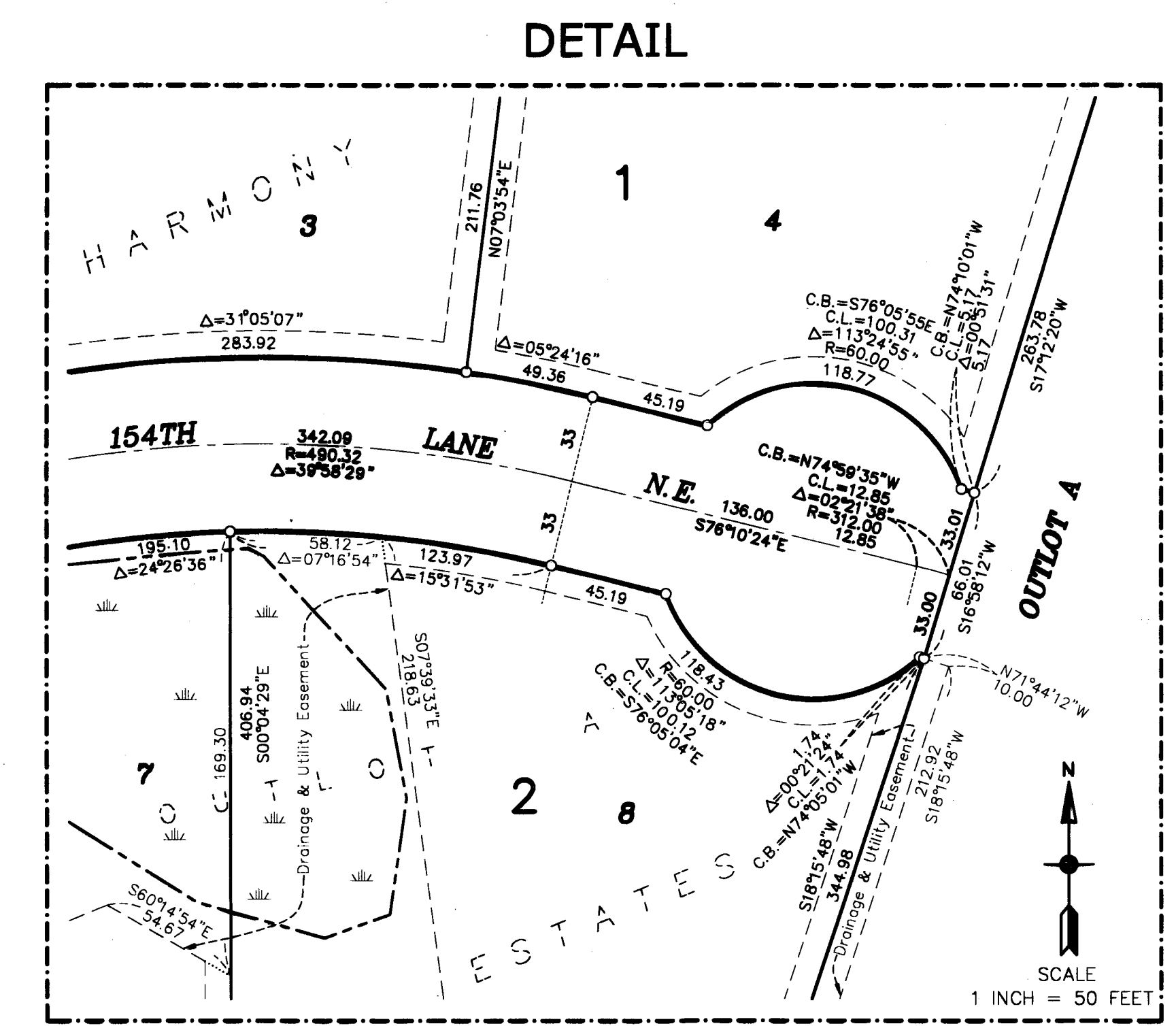
- For the purposes of this plat, the North line of Outlot A, HARMONY ESTATES, is assumed to have a bearing of South 88 degrees 50 minutes 20 seconds East.
- (100.00) Denotes dimension per Plat of HARMONY ESTATES
 - Denotes 1/2 inch by 14 inch iron monument set or to be set within one year of recording of this plat and marked with license number 40361
 - Denotes Found Iron Monument marked with RLS Number 17255
 - ⊙ Denotes Found Anoka County Monument
 - ▭ Denotes Wetland that was delineated by Ken Meeks in 2014



Carlson McCain
 ENVIRONMENTAL · ENGINEERING · SURVEYING



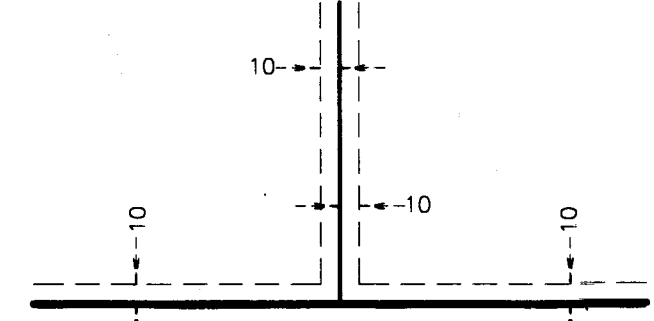
HARMONY ESTATES 2ND ADDITION INSET 'A'



For the purposes of this plat, the North line of Outlot A, HARMONY ESTATES, is assumed to have a bearing of South 88 degrees 50 minutes 20 seconds East.

- Denotes Wetland that was delineated by Ken Meeks in 2014
- Denotes 1/2 inch by 14 inch iron monument set or to be set within one year of recording of this plat and marked with license number 40361
- Denotes Found Iron Monument marked with RLS Number 17255

DRAINAGE AND UTILITY EASEMENTS ARE SHOWN THUS:



being 10 feet in width, and adjoining right of way lines, side lot lines, and rear lot lines unless otherwise shown on this plat.

