

# HARMONY FARMS SECOND ADDITION

CITY OF RAMSEY  
COUNTY OF ANOKA  
SEC. 10, T. 32, R. 25

KNOW ALL PERSONS BY THESE PRESENTS: That DRP MN 1, LLC, a Delaware limited liability company, owner of the following described property:

Outlot B, HARMONY FARMS, Anoka County, Minnesota.

AND

Outlot C, HARMONY FARMS, Anoka County, Minnesota.

Has caused the same to be surveyed and platted as HARMONY FARMS SECOND ADDITION and does hereby dedicate to the public for public use the public ways and the drainage and utility easements as shown on this plat. Also dedicating to the County of Anoka the right of access onto County State Aid Highway No. 5 as shown on this plat.

In witness whereof said DRP MN 1, LLC, a Delaware limited liability company, has caused these presents to be signed by its proper officer this 12 day of AUGUST, 2024.

DRP MN 1, LLC [Signature]  
signature  
Brian Clauson as AUTHORIZED SIGNATORY  
printed Title

STATE OF MINNESOTA  
COUNTY OF Dakota

This instrument was acknowledged before me on August 12, 2024 by Brian Clauson as AUTHORIZED SIGNATORY of DRP MN 1, LLC, a Delaware limited liability company, on behalf of the company.

[Signature]  
signature  
Jarrett A. Clauson  
printed  
Notary Public, Dakota County, Minnesota  
My Commission Expires Jan. 31, 2027

### SURVEYOR'S CERTIFICATE

I Peter J. Hawkinson do hereby certify that this plat was prepared by me or under my direct supervision; that I am a duly Licensed Land Surveyor in the State of Minnesota; that this plat is a correct representation of the boundary survey; that all mathematical data and labels are correctly designated on this plat; that all monuments depicted on this plat have been, or will be correctly set within one year; that all water boundaries and wet lands, as defined in Minnesota Statutes, Section 505.01, Subd. 3, as of the date of this certificate are shown and labeled on this plat; and all public ways are shown and labeled on this plat.

Dated this 24th day of July, 2024.

[Signature]  
Peter J. Hawkinson, Licensed Land Surveyor  
Minnesota License No. 42299

STATE OF MINNESOTA  
COUNTY OF Dakota

This instrument was acknowledged before me on this 24th day of July, 2024 by Peter J. Hawkinson.

[Signature]  
signature  
Nicholas J. Kalsoud  
printed  
Notary Public, Dakota County, Minnesota  
My Commission Expires 1-31-2025

### CITY COUNCIL, CITY OF RAMSEY, Minnesota

This plat of HARMONY FARMS SECOND ADDITION was approved and accepted by the City Council of the City of Ramsey, Minnesota at a regular meeting thereof held this 14th day of MAY, 2024, and said plat is in compliance with the provisions of Minnesota Statutes, Section 505.03, Subd. 2.

City Council, City of Ramsey, Minnesota

By: [Signature] Mayor  
By: [Signature] Clerk

### COUNTY SURVEYOR

I hereby certify that in accordance with Minnesota Statutes, Section 505.021, subd. 11, this plat has been reviewed and approved this 27th day of August, 2024.

By: [Signature]  
David M. Ziegler  
Anoka County Surveyor

### COUNTY AUDITOR/TREASURER

Pursuant to Minnesota Statutes, Section 505.021, Subd. 9, taxes payable in the year 2024 on the land hereinbefore described have been paid. Also, pursuant to Minnesota Statutes, Section 272.12, there are no delinquent taxes and transfer entered this 27 day of August, 2024.

[Signature]  
Pamela J. LeBlanc  
Property Tax Administrator  
By: [Signature], Deputy

### COUNTY RECORDER/REGISTRAR OF TITLES County of Anoka, State of Minnesota

I hereby certify that this plat of HARMONY FARMS SECOND ADDITION was filed in the office of the County Recorder/Registrar of Titles for public record on this 27 day of August, 2024, at 11:07 o'clock A.M. and was duly recorded as Document Number 2420907.002.

[Signature]  
Pamela J. LeBlanc  
County Recorder/Registrar of Titles  
By: [Signature], Deputy

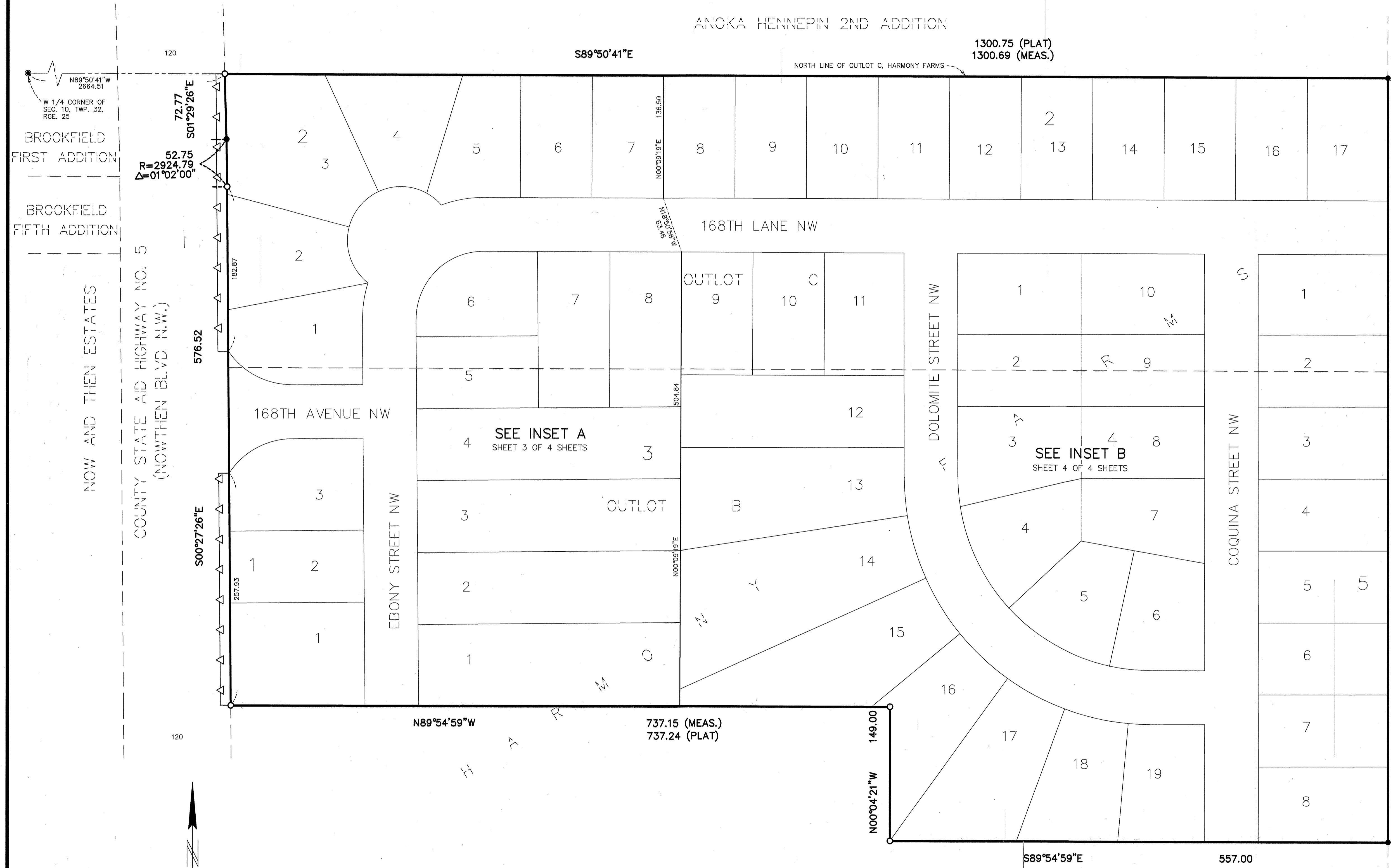
\$56.00

# HARMONY FARMS SECOND ADDITION

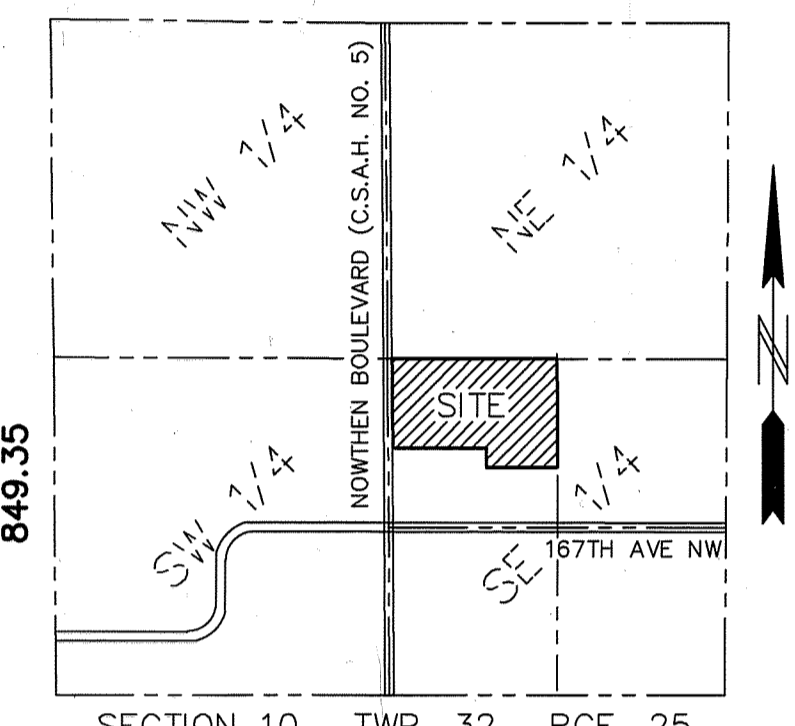
CITY OF RAMSEY  
 COUNTY OF ANOKA  
 SEC. 10, T. 32, R. 25

OFFICIAL PLAT

2420907.002

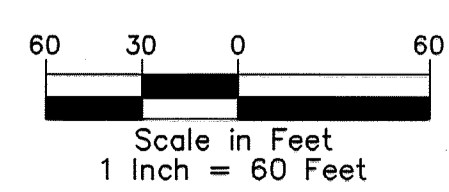


SHADY  
LAWN  
ESTATES



THE ORIENTATION OF THIS BEARING SYSTEM IS BASED ON THE NORTH LINE OF OUTLOT C, HARMONY FARMS, WHICH IS ASSUMED TO HAVE A BEARING OF SOUTH 89°50'41" EAST.

- DENOTES FOUND CAST IRON MONUMENT
- DENOTES 1/2 INCH BY 14 INCH IRON PIPE MONUMENT SET AND MARKED BY LICENSE NUMBER 42299, OR WILL BE SET IN ACCORDANCE WITH MS SECTION 505.021, SUBD. 10.
- DENOTES FOUND 1/2 INCH IRON PIPE MONUMENT.
- (PLAT) DENOTES DIMENSIONS AS SHOWN ON THE PLAT OF HARMONY FARMS.
- △ DENOTES RIGHT OF ACCESS DEDICATED TO ANOKA COUNTY.

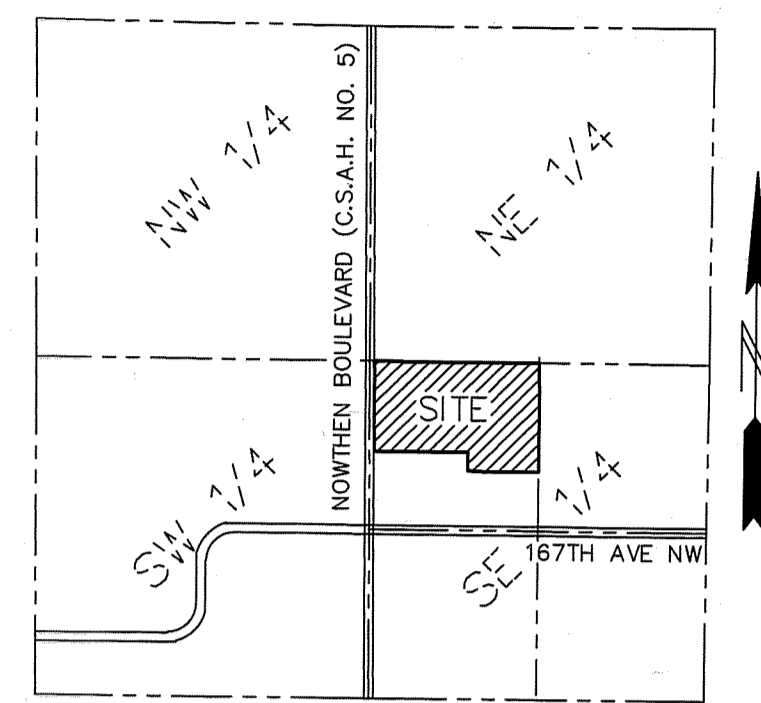
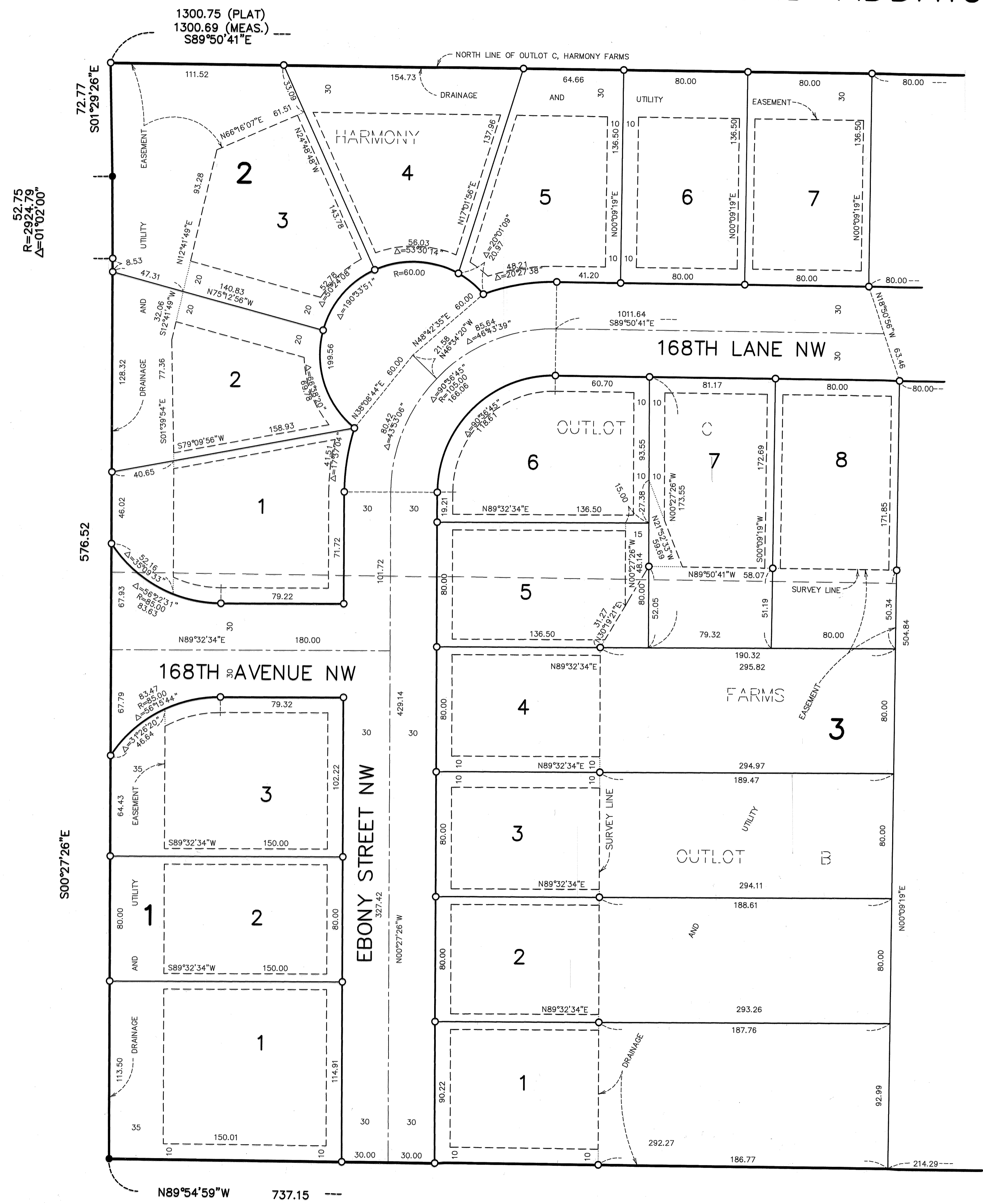


**PIONEER**engineering  
 CIVIL ENGINEERS LAND PLANNERS LAND SURVEYORS LANDSCAPE ARCHITECTS

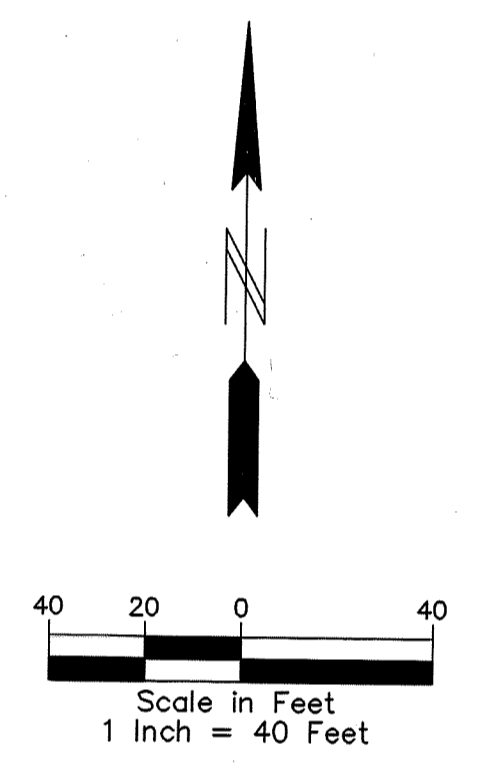
INSET A

# HARMONY FARMS SECOND ADDITION

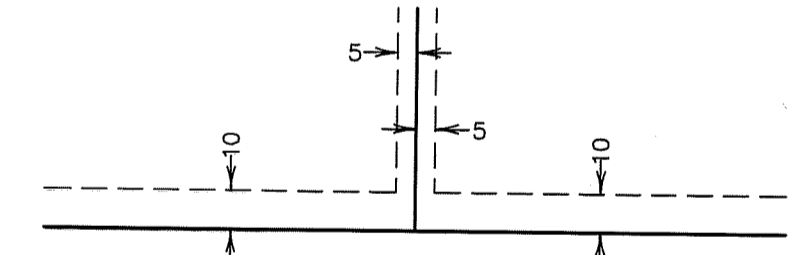
CITY OF RAMSEY  
COUNTY OF ANOKA  
SEC. 10, T. 32, R. 25



SECTION 10, TWP. 32, RGE. 25  
ANOKA COUNTY  
LOCATION MAP  
NOT TO SCALE



DRAINAGE AND UTILITY  
EASEMENTS ARE SHOWN THUS:  
(NOT TO SCALE)



Being 5 feet in width, and adjoining lot lines unless otherwise indicated, and 10 feet in width and adjoining right of way and rear lot lines unless otherwise indicated on the plat.

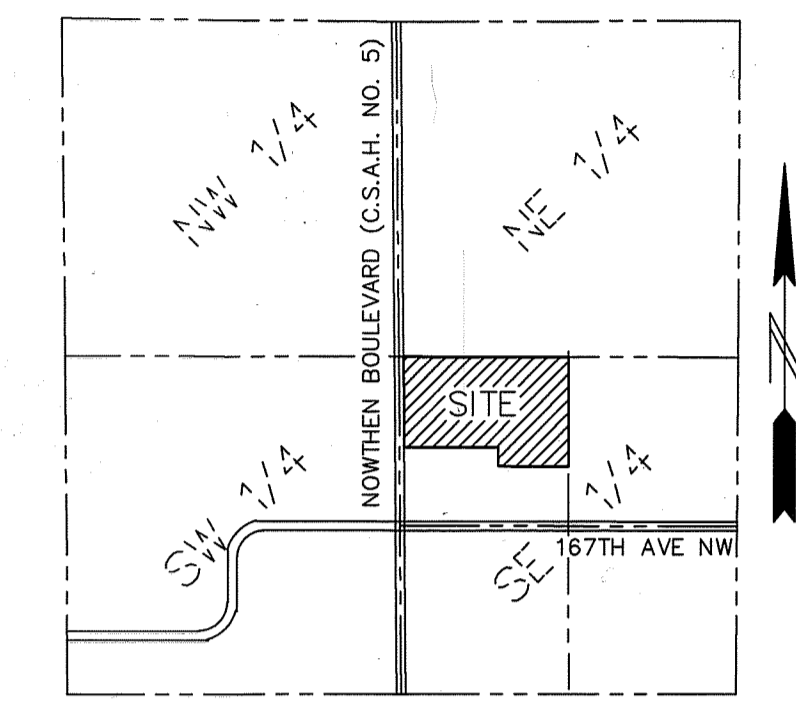
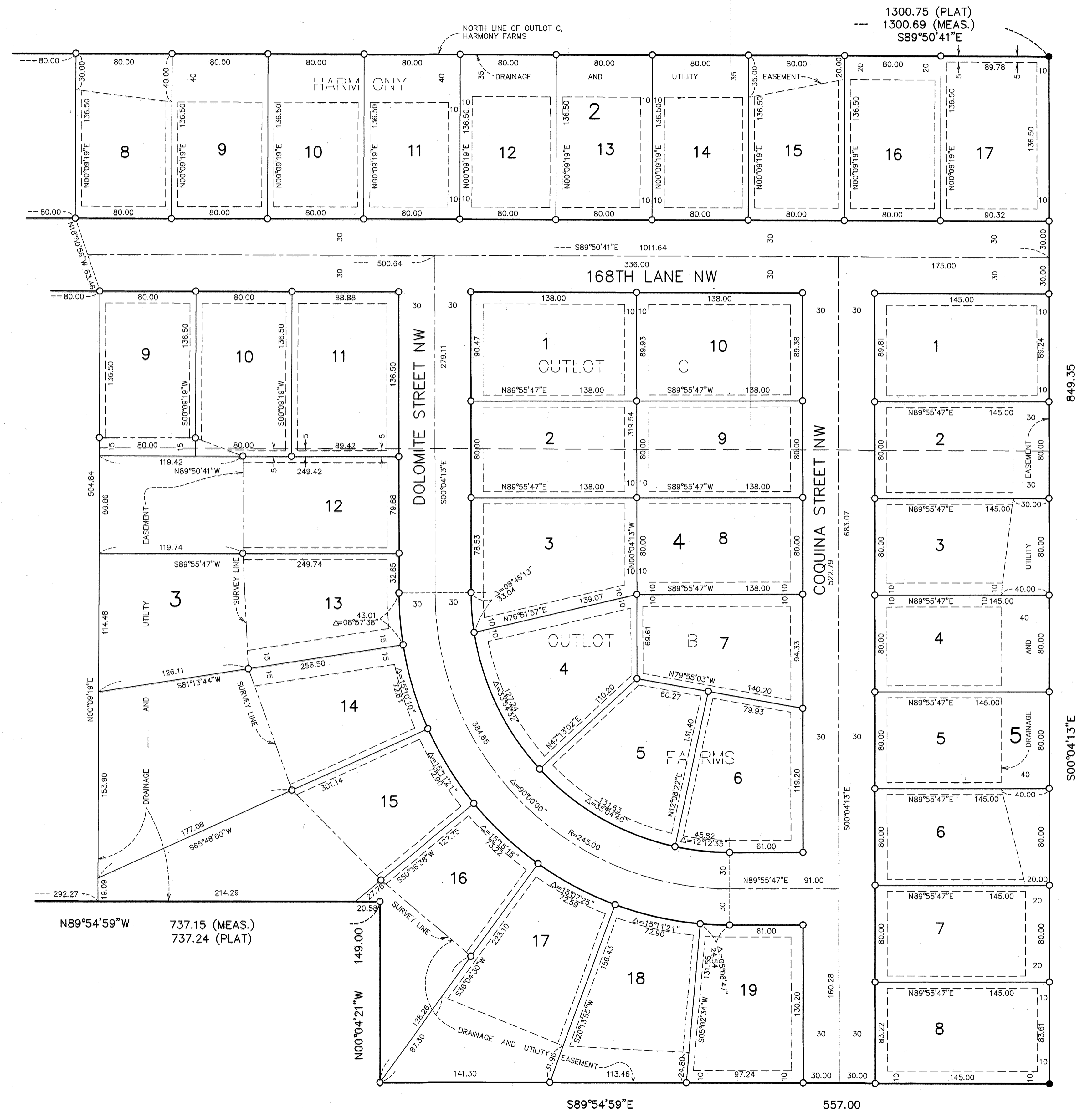
THE ORIENTATION OF THIS BEARING SYSTEM IS BASED ON THE NORTH LINE OF OUTLOT C, HARMONY FARMS, WHICH IS ASSUMED TO HAVE A BEARING OF SOUTH 89°50'41\"

- DENOTES 1/2 INCH BY 14 INCH IRON PIPE MONUMENT SET AND MARKED BY LICENSE NUMBER 42299, OR WILL BE SET IN ACCORDANCE WITH MS SECTION 505.021, SUBD. 10.
- DENOTES FOUND 1/2 INCH IRON PIPE MONUMENT

INSET B

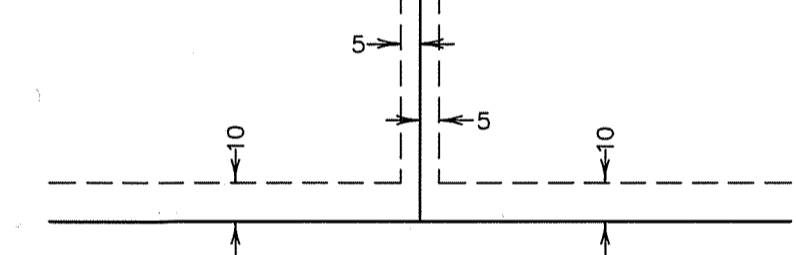
# HARMONY FARMS SECOND ADDITION

CITY OF RAMSEY  
COUNTY OF ANOKA  
SEC. 10, T. 32, R. 25



SECTION 10, TWP. 32, RGE. 25  
LOCATION MAP  
NOT TO SCALE

DRAINAGE AND UTILITY  
EASEMENTS ARE SHOWN THUS:



Being 5 feet in width, and adjoining lot lines unless otherwise indicated, and 10 feet in width and adjoining right of way and rear lot lines unless otherwise indicated on the plat.

THE ORIENTATION OF THIS BEARING SYSTEM IS BASED ON THE NORTH LINE OF OUTLOT C, HARMONY FARMS, WHICH IS ASSUMED TO HAVE A BEARING OF SOUTH 89°50'41" EAST.

- DENOTES 1/2 INCH BY 14 INCH IRON PIPE MONUMENT SET AND MARKED BY LICENSE NUMBER 42299, OR WILL BE SET IN ACCORDANCE WITH MS SECTION 505.021, SUBD. 10.
- DENOTES FOUND 1/2 INCH IRON PIPE MONUMENT

