

HARPERS HAVEN

CITY OF BLAINE
COUNTY OF ANOKA
SEC. 3, TWP. 31, RGE. 23

KNOW ALL PERSONS BY THESE PRESENTS: That Waters Edge Investments, LLC, a Minnesota limited liability company, owner of the following described property:

The North 330.00 feet of the South 660.00 feet of the Northwest Quarter of the Southeast Quarter of Section 3, Township 31, Range 23, EXCEPT the East 660.00 feet thereof, also EXCEPT the West 73.33 feet thereof, Anoka County, Minnesota.

Has caused the same to be surveyed and platted as HARPERS HAVEN and does hereby dedicate to the public for public use the public ways and the drainage and utility easements as shown on this plat.

In witness whereof said Waters Edge Investments, LLC, a Minnesota limited liability company, has caused these presents to be signed by its proper officer this 23 day of July, 2020

WATERS EDGE INVESTMENTS, LLC

[Signature]
Gregory J. Peterson, Chief Manager

STATE OF Minnesota
COUNTY OF Anoka

This instrument was acknowledged before me on July 23rd, 2020 by Gregory J. Peterson, Chief Manager of Waters Edge Investments, LLC, a Minnesota limited liability company.

Cynthia J. Morical (Signed)
Cynthia J. Morical (Printed)
Notary Public, Hennepin County, Minnesota
My commission expires January 31, 2025

I, Thomas R. Balluff do hereby certify that this plat was prepared by me or under my direct supervision; that I am a duly Licensed Land Surveyor in the State of Minnesota; that this plat is a correct representation of the boundary survey; that all mathematical data and labels are correctly designated on this plat; that all monuments depicted on this plat have been, or will be correctly set within one year; that all water boundaries and wet lands, as defined in Minnesota Statutes, Section 505.01, Subd. 3, as of the date of this certificate are shown and labeled on this plat; and all public ways are shown and labeled on this plat.

Dated this 23rd day of JULY, 2020

[Signature]
Thomas R. Balluff, Licensed Land Surveyor
Minnesota License No. 40361

STATE OF Minnesota
COUNTY OF Anoka

This instrument was acknowledged before me on July 23rd, 2020 by Thomas R. Balluff.

Cynthia J. Morical (Signed)
Cynthia J. Morical (Printed)
Notary Public, Hennepin County, Minnesota
My commission expires January 31, 2025

CITY COUNCIL, CITY OF BLAINE, MINNESOTA

This plat of HARPERS HAVEN was approved and accepted by the City Council of the City of Blaine, Minnesota at a regular meeting thereof held this 18th day of May, 2020 and said plat is in compliance with the provisions of Minnesota Statutes, Section 505.03, Subd. 2.

CITY COUNCIL, CITY OF BLAINE, MINNESOTA

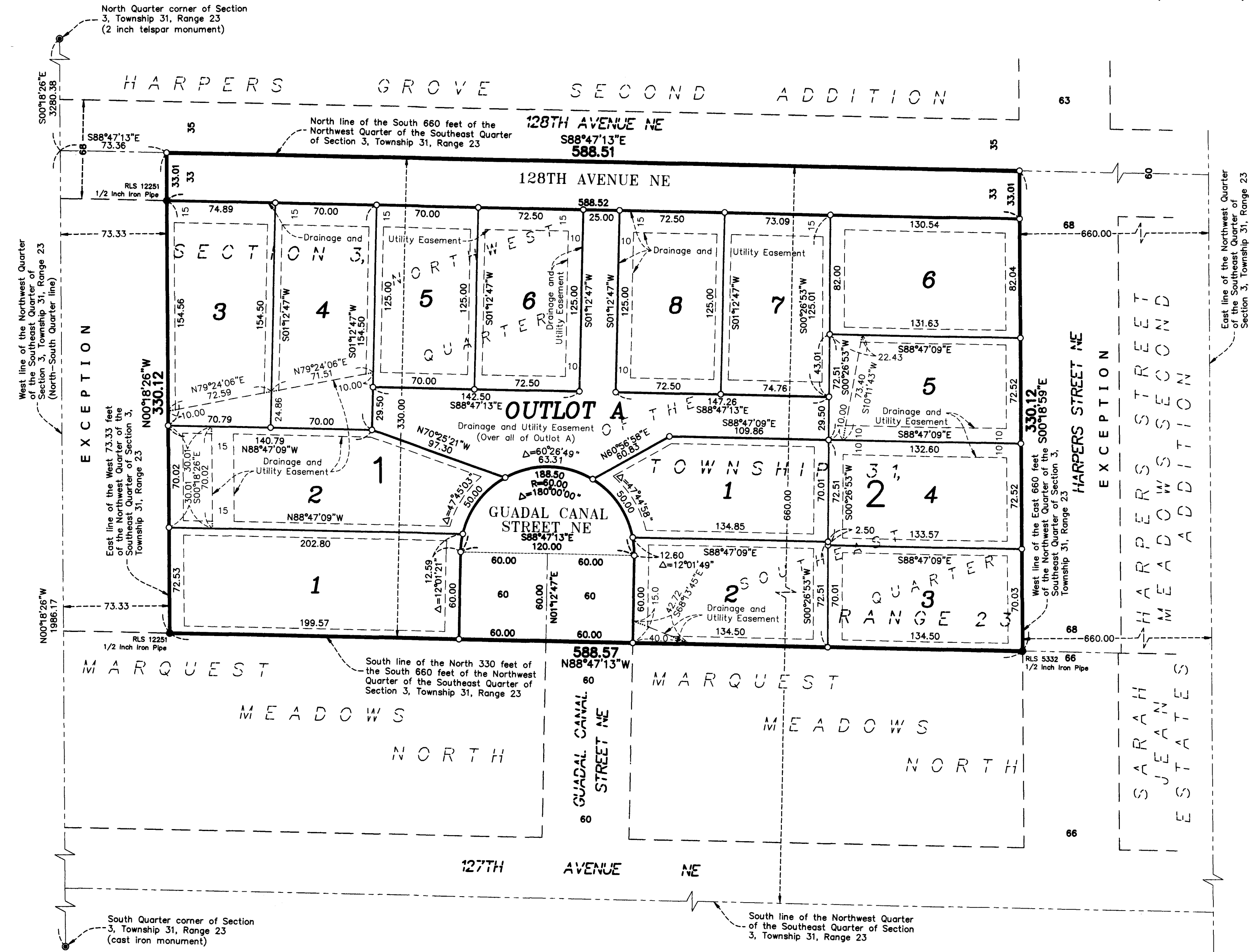
By: [Signature] Mayor

By: [Signature] Clerk

COUNTY SURVEYOR

I hereby certify that in accordance with Minnesota Statutes, Section 505.021, Subd. 11, this plat has been reviewed and approved this 3rd day of September, 2020.

By: [Signature]
Charles F. Gitzen
Anoka County Surveyor



COUNTY AUDITOR/TREASURER

Pursuant to Minnesota Statutes, Section 505.021, Subd. 9, taxes payable in the year 2020 on the land hereinbefore described have been paid. Also, pursuant to Minnesota Statutes, Section 272.12, there are no delinquent taxes and transfer entered this 3rd day of September, 2020.

[Signature]
Pamela d LeBlanc
Property Tax Administrator

By: [Signature] Deputy

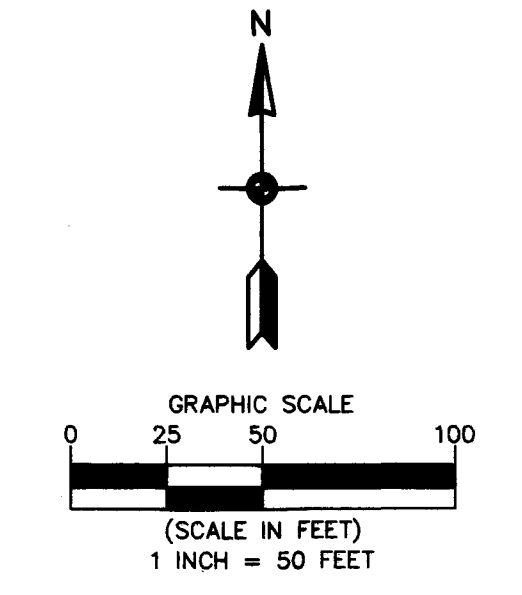
COUNTY RECORDER/REGISTRAR OF TITLES

County of Anoka, State of Minnesota

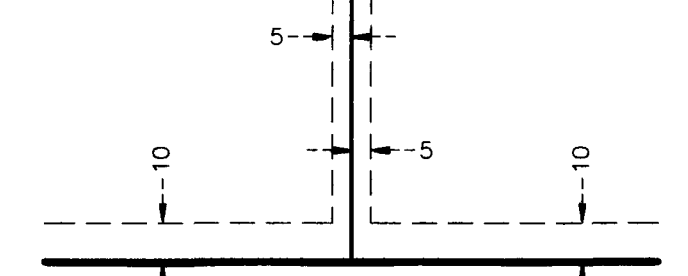
I hereby certify that this plat of HARPERS HAVEN was filed in the office of the County Recorder/Registrar of Titles for public record on this 3rd day of September, 2020, at 10:17 o'clock A.M. and was duly recorded as Document Number 2276832.001.

[Signature]
Pamela d LeBlanc
County Recorder/Registrar of Titles

By: [Signature] Deputy



DRAINAGE AND UTILITY EASEMENTS ARE SHOWN THUS:



being 5 feet in width, and adjoining side lot lines, and 10 feet in width and adjoining right of way lines and rear lot lines unless otherwise shown on this plat.

For the purposes of this plat, the North line of the South 660 feet of the Northwest Quarter of the Southeast Quarter of Section 3, Township 31, Range 23 is assumed to have a bearing of South 88 degrees 47 minutes 13 seconds East.

- Denotes Found Anoka County Section Monument, as noted
- Denotes 5/8 inch by 14 inch Rebar, set or to be set within one year of recording of this plat and marked with license number 40361
- Denotes Found Iron Monument as noted

