

# HARPERS LANDING NORTH

CITY OF BLAINE  
COUNTY OF ANOKA  
SEC. 3, TWP. 31, RGE. 23

KNOW ALL PERSONS BY THESE PRESENTS: That Harpers Grove LLC, a Minnesota limited liability company, owner of the following described property:

The Southwest Quarter of Southeast Quarter of Section 3, Township 31, Range 23, Anoka County, Minnesota, except the East 660 feet and except the South 990 feet thereof.

Has caused the same to be surveyed and platted as, HARPERS LANDING NORTH and does hereby dedicate to the public for public use the public way and the drainage and utility easements as shown on this plat.

In witness whereof said Harpers Grove LLC, a Minnesota limited liability company, has caused these presents to be signed by its proper officer this 1 day of August, 2022.

HARPERS GROVE LLC

Kelly M.H. Olsen  
Kelly M. Olsen, as Chief Manager

STATE OF Minnesota  
COUNTY OF Anoka

This instrument was acknowledged before me on August 1, 2022 by Kelly M. H. Olsen, Chief Manager of Harper Grove LLC, a Minnesota limited liability company, on behalf of the company.

Cynthia J. Morica (Signed)  
Cynthia J. Morica (Printed)  
Notary Public, Hennepin County, Minnesota  
My commission expires January 31, 2025

I, Thomas R. Balluff do hereby certify that this plat was prepared by me or under my direct supervision; that I am a duly Licensed Land Surveyor in the State of Minnesota; that this plat is a correct representation of the boundary survey; that all mathematical data and labels are correctly designated on this plat; that all monuments depicted on this plat have been, or will be correctly set within one year; that all water boundaries and wet lands, as defined in Minnesota Statutes, Section 505.01, Subd. 3, as of the date of this certificate are shown and labeled on this plat; and all public ways are shown and labeled on this plat.

Dated this 30<sup>th</sup> day of JUNE, 2022.

Thomas R. Balluff  
Thomas R. Balluff, Licensed Land Surveyor  
Minnesota License No. 40361

STATE OF Minnesota  
COUNTY OF Anoka

This instrument was acknowledged before me on June 30, 2022 by Thomas R. Balluff.

Cynthia J. Morica (Signed)  
Cynthia J. Morica (Printed)  
Notary Public, Hennepin County, Minnesota  
My commission expires January 31, 2025

CITY COUNCIL, CITY OF BLAINE, MINNESOTA

This plat of HARPERS LANDING NORTH was approved and accepted by the City Council of the City of Blaine, Minnesota at a regular meeting thereof held this 2nd day of May, 2022 and said plat is in compliance with the provisions of Minnesota Statutes, Section 505.03, Subd. 2.

CITY COUNCIL, CITY OF BLAINE, MINNESOTA

By: [Signature] Mayor  
By: [Signature] Clerk

COUNTY SURVEYOR

I hereby certify that in accordance with Minnesota Statutes, Section 505.021, Subd. 11, this plat has been reviewed and approved this 16<sup>th</sup> day of August, 2022.

By: David M. Ziegler  
David M. Ziegler  
Anoka County Surveyor

COUNTY AUDITOR/TREASURER

Pursuant to Minnesota Statutes, Section 505.021, Subd. 9, taxes payable in the year 2022 on the land hereinbefore described have been paid. Also, pursuant to Minnesota Statutes, Section 272.12, there are no delinquent taxes and transfer entered this 16 day of August, 2022.

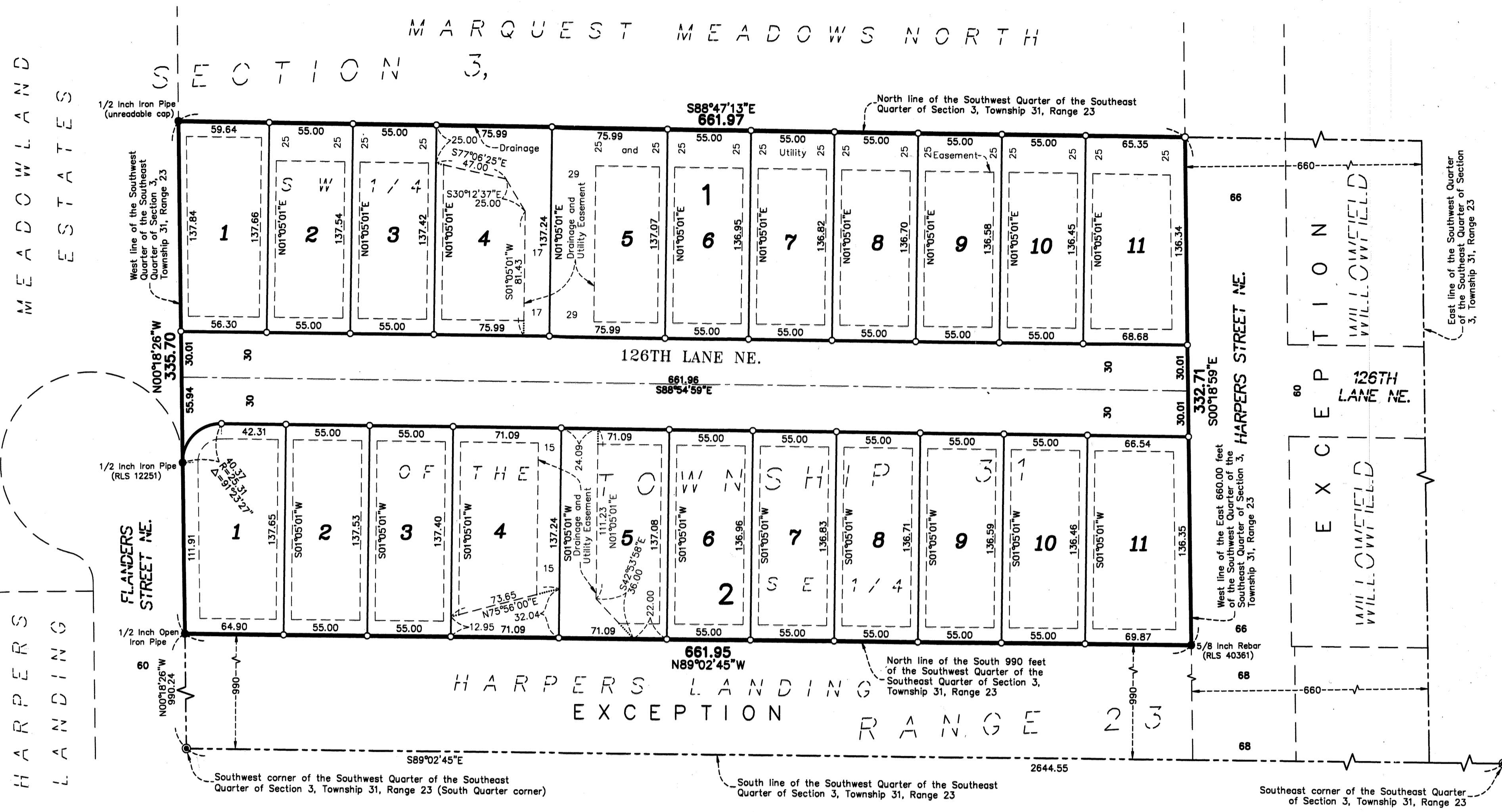
Pamela J. LeBlanc  
Property Tax Administrator  
By: [Signature] Deputy

COUNTY RECORDER/REGISTRAR OF TITLES

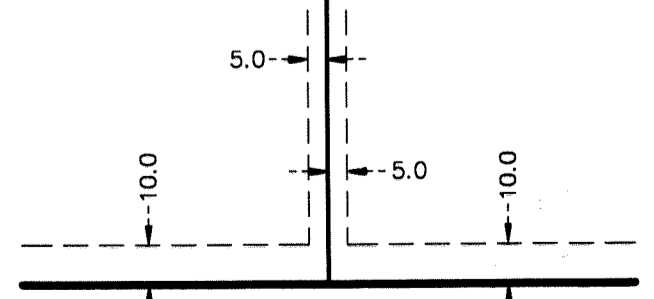
County of Anoka, State of Minnesota

I hereby certify that this plat of HARPERS LANDING NORTH was filed in the office of the County Recorder/Registrar of Titles for public record on this 16 day of August, 2022, at 10:10 o'clock A.M. and was duly recorded as Document Number 2373384.005.

Pamela J. LeBlanc  
County Recorder/Registrar of Titles  
By: [Signature] Deputy



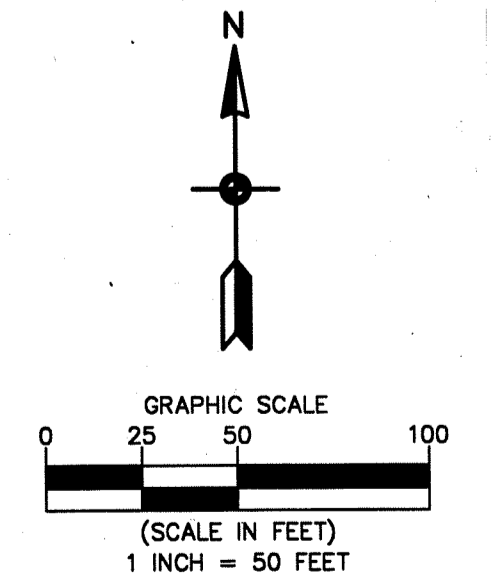
### DRAINAGE AND UTILITY EASEMENTS ARE SHOWN THUS:



being 5 feet in width, and adjoining side lot lines, and 10 feet in width and adjoining right of way lines and rear lot lines unless otherwise shown on this plat.

For the purposes of this plat, the North line of the Southwest Quarter of the Southeast Quarter of Section 3, Township 31, Range 23, which is assumed to bear South 88°47'13" East.

- Denotes 5/8 inch by 14 inch Rebar, set or to be set within one year of recording of this plat and marked with license number 40361
- Denotes Found Iron Monument, as noted
- ⊙ Denotes Found Anoka County Cast Iron Section Monument



456