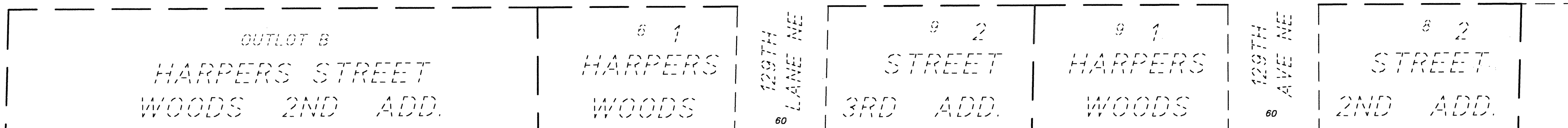
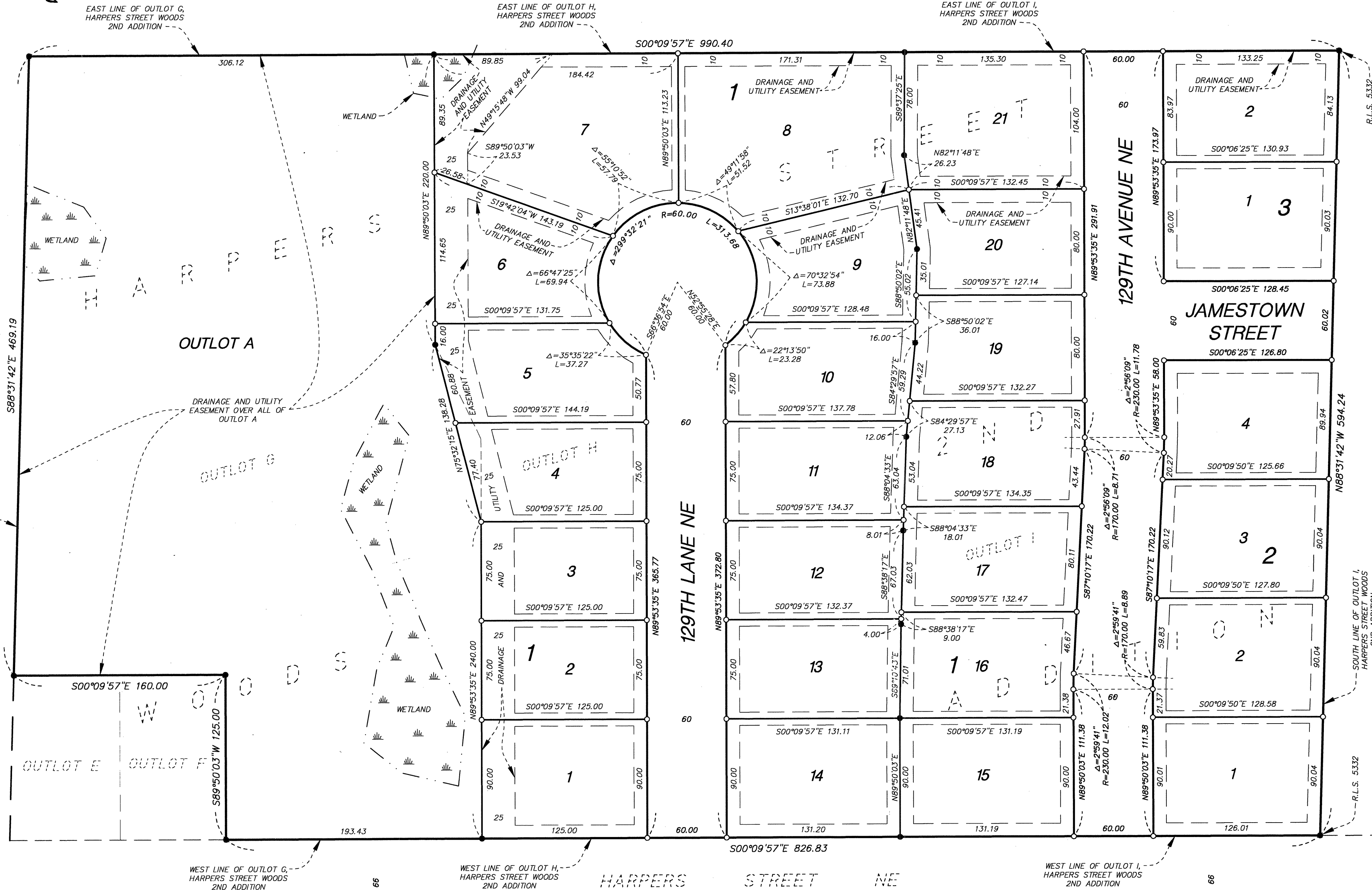
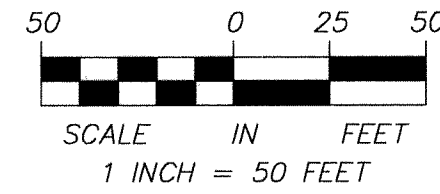
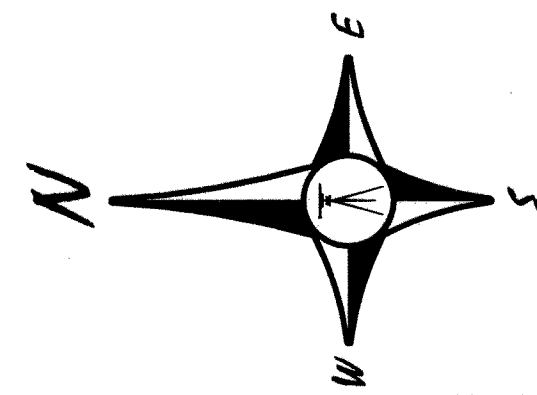
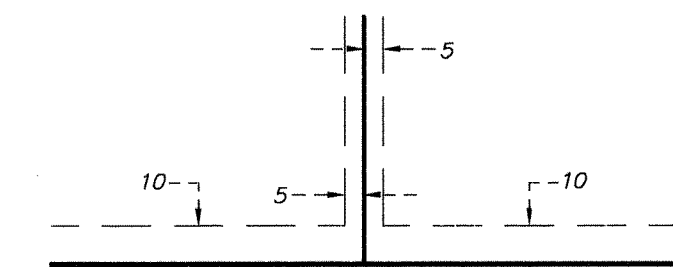


HARPERS STREET WOODS 4TH ADDITION



DRAINAGE AND UTILITY EASEMENTS ARE SHOWN THUS:



BEING 5 FEET IN WIDTH AND ADJOINING SIDE LOT LINES, ALSO BEING 10 FEET IN WIDTH AND ADJOINING RIGHT-OF-WAY LINES AND REAR LOT LINES, UNLESS OTHERWISE SHOWN ON THIS PLAT.

LEGEND

- DENOTES FOUND IRON PIPE MARKED R.L.S. 42627 UNLESS OTHERWISE SHOWN
- DENOTES SET 1/2" IRON PIPE WITH CAP MARKED R.L.S. 42627
- DENOTES EDGE OF WETLAND (SEE WETLAND NOTE)

BEARING NOTE

FOR THE PURPOSES OF THIS PLAT, THE SOUTH LINE OF OUTLOT I, HARPERS STREET WOODS 2ND ADDITION IS ASSUMED TO BEAR NORTH 88 DEGREES 31 MINUTES 42 SECONDS WEST.

WETLAND NOTE

THE WETLANDS SHOWN HEREON WERE DELINEATED BY KJOLHAUG ENVIRONMENTAL SERVICES COMPANY IN APRIL, 2005. THE DELINEATION WAS RE-CERTIFIED BY KJOLHAUG ENVIRONMENTAL SERVICES COMPANY AND APPROVED BY COON CREEK WATERSHED IN NOVEMBER, 2012

KNOW ALL PERSONS BY THESE PRESENTS: That Harper Street Woods, LLC, a Minnesota limited liability company, owner of the following described property:

Outlot G, Outlot H, and Outlot I, HARPERS STREET WOODS 2ND ADDITION, Anoka County, Minnesota.

Has caused the same to be surveyed and platted as HARPERS STREET WOODS 4TH ADDITION and does hereby dedicate to the public for public use the public ways and the drainage and utility easements as shown on this plat.

In witness whereof said Harper Street Woods, LLC, a Minnesota limited liability company, has caused these presents to be signed by its proper officer this 31 day of March, 2014

HARPER STREET WOODS, LLC

Barry B. Onufrock
Barry B. Onufrock, Chief Manager

State of Minnesota
County of Anoka

This instrument was acknowledged before me on 3/31/14 by Barry B. Onufrock, Chief Manager of Harper Street Woods, LLC, a Minnesota limited liability company.

Rebecca LaBarto
Rebecca LaBarto
Notary Public, Anoka County, Minnesota
My commission expires 1-31-16

I Kyle J. Roddy do hereby certify that this plat was prepared by me or under my direct supervision; that I am a duly Licensed Land Surveyor in the State of Minnesota; that this plat is a correct representation of the boundary survey; that all mathematical data and labels are correctly designated on this plat; that all monuments depicted on this plat have been, or will be correctly set within one year; that all water boundaries and wet lands, as defined in Minnesota Statutes, Section 505.01, Subd. 3, as of the date of this certificate are shown and labeled on this plat; and all public ways are shown and labeled on this plat.

Dated this 18th day of March, 2014

Kyle J. Roddy
Kyle J. Roddy, Licensed Land Surveyor
Minnesota License Number 42627

State of Minnesota
County of Anoka

This instrument was acknowledged before me on March 18, 2014 by Kyle J. Roddy.

Christine S. Hanson
Christine S. Hanson
Notary Public, Anoka County, Minnesota
My commission expires January 31, 2015

CITY COUNCIL, CITY OF BLAINE, MINNESOTA

This plat of HARPERS STREET WOODS 4TH ADDITION was approved and accepted by the City Council of the City of Blaine, Minnesota at a regular meeting thereof held this 19th day of December, 2013, and said plat is in compliance with the provisions of Minnesota Statutes, Section 505.03, Subd. 2.

CITY COUNCIL, CITY OF BLAINE, MINNESOTA

By *Kevin Steyer*, Mayor By *Jane M. Cross*, Clerk

ANOKA COUNTY SURVEYOR

I hereby certify that in accordance with Minnesota Statutes, Section 505.021, Subd. 11, this plat has been reviewed and approved this 7th day of MAY, 2014.

Larry D. Hjelm
Larry D. Hjelm, Anoka County Surveyor

2082012.004
Office of RECORDER/REGISTRAR
OF TITLES

STATE OF MINNESOTA COUNTY OF ANOKA

I hereby certify that the within instrument was filed in

this office for record on the 7th day of

May, 2014 at 9:50 o'clock A.M.

and was duly recorded in book 77 page

17

Jonell M. Sawyer
Jonell M. Sawyer
Recorder/Registrar of Titles

By *JF*
Deputy

I HEREBY CERTIFY THAT THE CURRENT AND DELINQUENT TAXES ON THE LANDS DESCRIBED WITHIN ARE PAID AND THE TRANSFER IS ENTERED	
DATE	5-7-2014
BY	<i>Jonell M. Sawyer</i> PROPERTY TAX ADMINISTRATOR
DEPUTY	<i>JF</i>



\$56.00