

HARPERS STREET WOODS 5TH ADDITION

KNOW ALL PERSONS BY THESE PRESENTS: That Harper Street Woods, LLC, a Minnesota limited liability company, owner of the following described property:

Outlot B, HARPERS STREET WOODS 2ND ADDITION, Anoka County, Minnesota.

Has caused the same to be surveyed and platted as HARPERS STREET WOODS 5TH ADDITION and does hereby dedicate to the public for public use the public way and the drainage and utility easements as shown on this plat.

In witness whereof said Harper Street Woods, LLC, a Minnesota limited liability company, has caused these presents to be signed by its proper officer this 2 day of March, 2015.

HARPER STREET WOODS, LLC
Barry B. Onufrock
Barry B. Onufrock, Chief Manager

State of Minnesota
County of Anoka

This instrument was acknowledged before me on March 3rd, 2015 by Barry B. Onufrock, Chief Manager of Harper Street Woods, LLC, a Minnesota limited liability company.

Monica Lux
Monica Lux
Notary Public, Anoka County, Minnesota
My commission expires Jan 31st, 2019

I Kyle J. Roddy do hereby certify that this plat was prepared by me or under my direct supervision; that I am a duly Licensed Land Surveyor in the State of Minnesota; that this plat is a correct representation of the boundary survey; that all mathematical data and labels are correctly designated on this plat; that all monuments depicted on this plat have been, or will be correctly set within one year; that all water boundaries and wet lands, as defined in Minnesota Statutes, Section 505.01, Subd. 3, as of the date of this certificate are shown and labeled on this plat; and all public ways are shown and labeled on this plat.

Dated this 23rd day of February, 2015.

Kyle J. Roddy
Kyle J. Roddy, Licensed Land Surveyor
Minnesota License Number 42627

State of Minnesota
County of Isanti

This instrument was acknowledged before me on February 23, 2015 by Kyle J. Roddy.

Jessica Johnson
Jessica Johnson
Notary Public, Isanti County, Minnesota
My commission expires Jan 24, 2018

CITY COUNCIL, CITY OF BLAINE, MINNESOTA

This plat of HARPERS STREET WOODS 5TH ADDITION was approved and accepted by the City Council of the City of Blaine, Minnesota at a regular meeting thereof held this 10th day of July, 2014, and said plat is in compliance with the provisions of Minnesota Statutes, Section 505.03, Subd. 2.

CITY COUNCIL, CITY OF BLAINE, MINNESOTA

By: *Christy* Mayor By: *Collins* Clerk

ANOKA COUNTY SURVEYOR

I hereby certify that in accordance with Minnesota Statutes, Section 505.021, Subd. 11, this plat has been reviewed and approved this 31st day of March, 2015.

Larry D. Holm by *Charles F. Setzen*, Deputy
Larry D. Holm, Anoka County Surveyor

COUNTY AUDITOR/TREASURER

Pursuant to Minnesota Statutes, Section 505.021, Subd. 9, taxes payable in the year 2015 on the land hereinbefore described have been paid. Also, pursuant to Minnesota Statutes, Section 272.12, there are no delinquent taxes and transfer entered this 31st day of March, 2015.

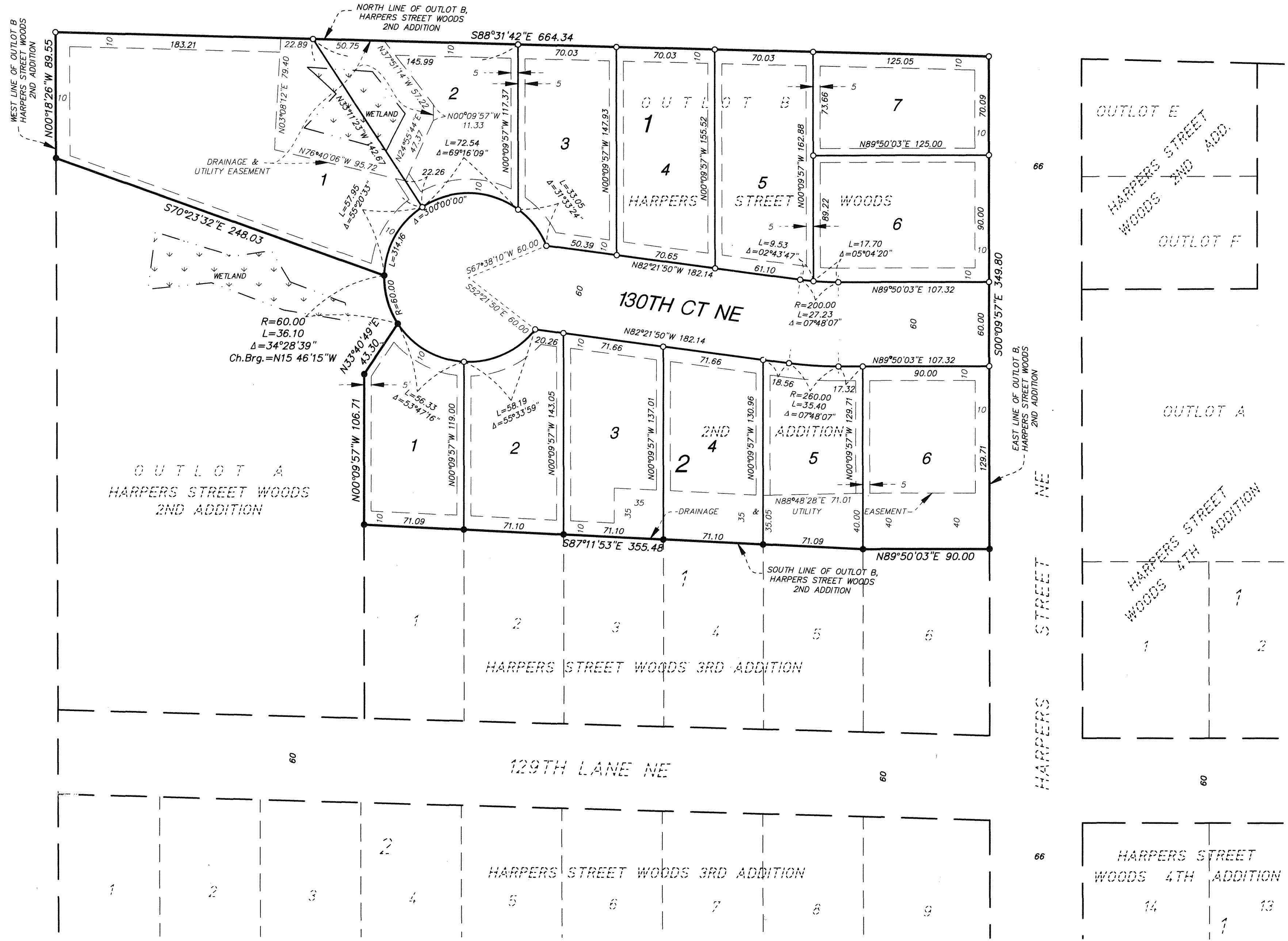
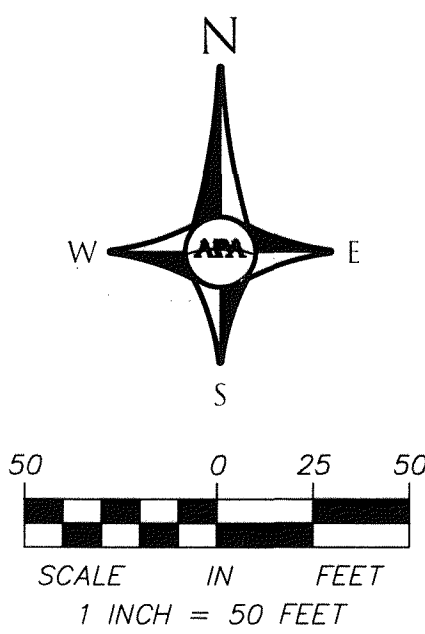
Jonell m. Sawyer
Jonell m. Sawyer
Property Tax Administrator
By: *N.S. Whelan* Deputy

COUNTY RECORDER/REGISTRAR OF TITLES

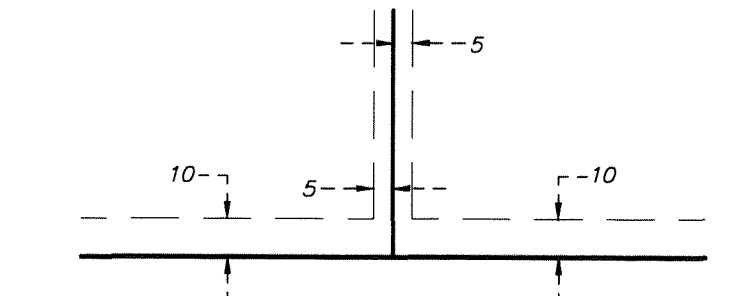
County of Anoka, State of Minnesota

I hereby certify that this plat of HARPERS STREET WOODS 5TH ADDITION, was filed in the office of the County Recorder/Registrar of Titles for public record on this 31st day of March, 2015, at 12:33 o'clock P.M. and was duly recorded in Book 78 Page 7, as Document Number 2103938.002.

Jonell m. Sawyer
Jonell m. Sawyer
County Recorder/Registrar of Titles
By: *N.S. Whelan* Deputy



DRAINAGE AND UTILITY EASEMENTS ARE SHOWN THUS:



BEING 5 FEET IN WIDTH AND ADJOINING SIDE LOT LINES, ALSO BEING 10 FEET IN WIDTH AND ADJOINING RIGHT-OF-WAY LINES AND REAR LOT LINES, UNLESS OTHERWISE SHOWN ON THIS PLAT.

LEGEND

- DENOTES FOUND IRON PIPE MARKED R.L.S. 42627 UNLESS OTHERWISE SHOWN
- DENOTES SET 1/2" IRON PIPE WITH CAP MARKED R.L.S. 42627
- DENOTES EDGE OF WETLAND (SEE WETLAND NOTE)

BEARING NOTE

FOR THE PURPOSES OF THIS PLAT, THE NORTH LINE OF OUTLOT B, HARPERS STREET WOODS 2ND ADDITION IS ASSUMED TO BEAR SOUTH 88 DEGREES 31 MINUTES 42 SECONDS EAST.

WETLAND NOTE

THE WETLANDS SHOWN HEREON WERE DELINEATED BY KJOLHAUG ENVIRONMENTAL SERVICES COMPANY IN APRIL, 2005. THE DELINEATION WAS RE-CERTIFIED BY KJOLHAUG ENVIRONMENTAL SERVICES COMPANY AND APPROVED BY COON CREEK WATERSHED IN NOVEMBER, 2012.