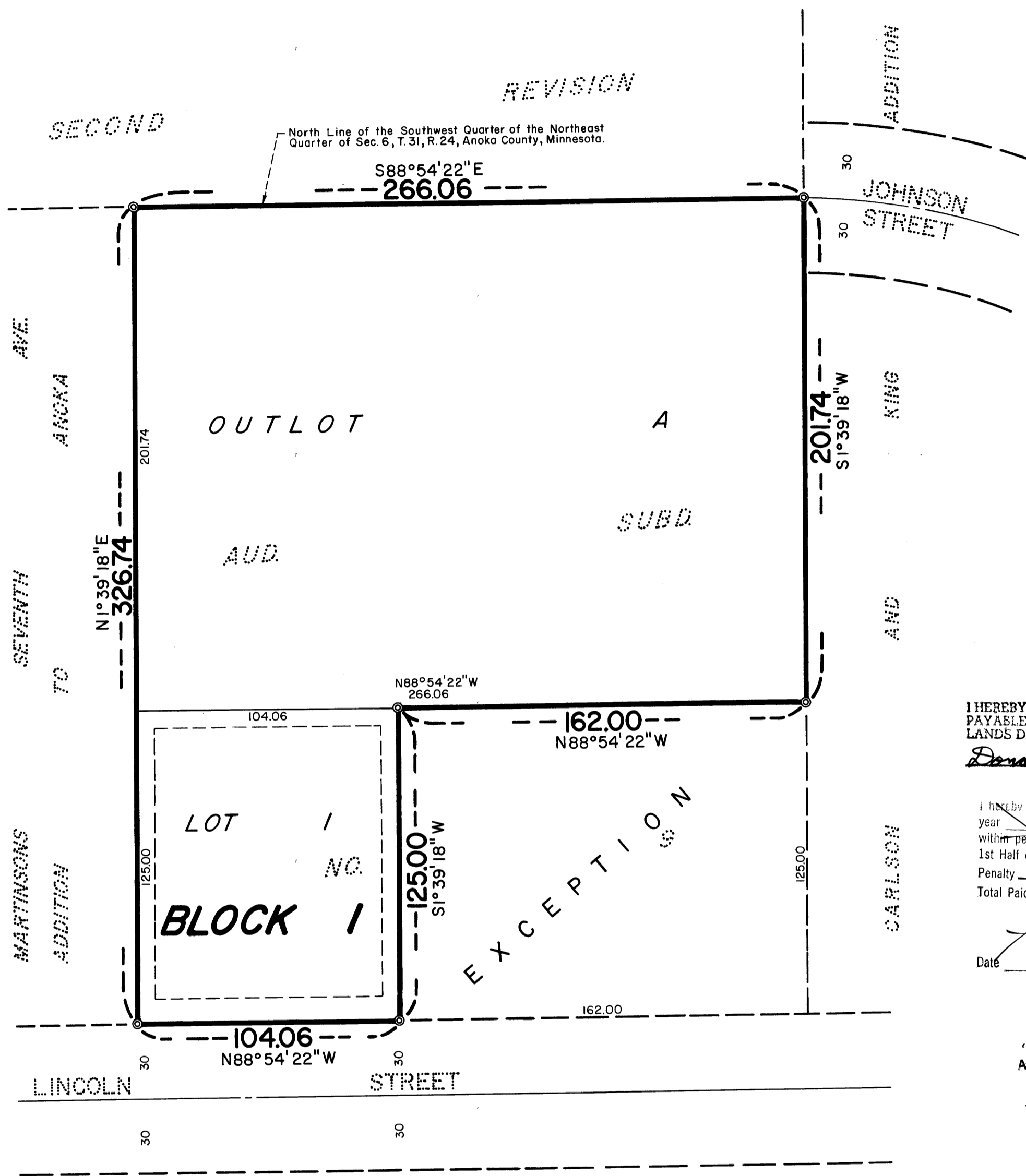


HARTFIEL ADDITION

City of Anoka County of Anoka



I HEREBY CERTIFY THAT THE TAXES PAYABLE IN THE YEAR 1984 ON THE LANDS DESCRIBED WITHIN ARE PAID

Donald C. Bailey, Treasurer
Anoka County Treasurer

I hereby certify that the taxes payable in the year 1984 on the property described in the within petition have been paid as follows:

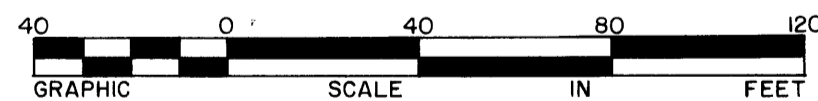
1st Half or Full	\$
Penalty	\$
Total Paid	\$

Anoka County Treasurer
By _____ Deputy County Treasurer
Date _____, 197

"NO DELINQUENT TAXES AND TRANSFER ENTERED"

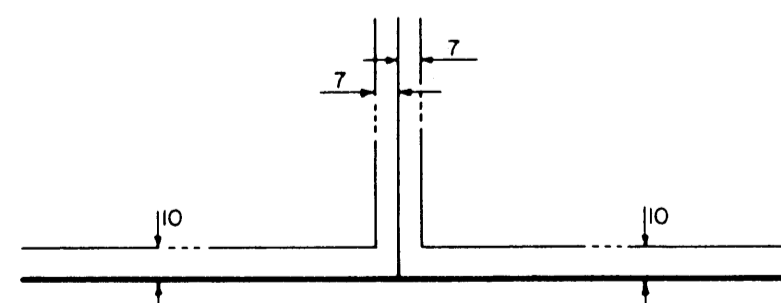
June 22nd 1984
Charles Rothman
Auditor, Anoka County

BY *J. Kaminski* Deputy



Scale: 1 Inch = 40 Feet
 ○ Denotes Iron Monument
 ⊙ Denotes Cast Iron Monument
 Bearings Shown Were Determined by Solar Observation

DRAINAGE AND UTILITY EASEMENTS ARE SHOWN THUS:



Being 7 feet in width, and adjoining lot lines, and 10 feet in width, and adjoining street lines as shown on the plat.

134942

134942
 TITLE
 HAKANSON ANDERSON ASSOCIATES, INC.
 ENGINEERS AND SURVEYORS

Hakanson Anderson Associates, Inc.
 engineers and surveyors

KNOW ALL MEN BY THESE PRESENTS: That Lowell Lindgren, personal representative of the estate of Lucille Lindgren, deceased, owner and proprietor, and Char-Mar Investment, Inc., a Minnesota Corporation, contract purchaser of the following described property situated in the County of Anoka, State of Minnesota, to wit:

The East 266.06 feet of the West 532.12 feet, except the East 162 feet of the South 125 feet of Lot Four (4) of Auditor's Subdivision Number Nine (9), according to the map or plat thereof on file and of record in the office of the County Recorder of Anoka County, NOW KNOWN as Lot Five (5), except the East One Hundred Sixty-two (162) feet of the South One Hundred Twenty-five (125) feet, Second Revision Auditor's Subdivision Number 9, according to the map or plat thereof on file and of record in the Office of the Registrar in and for the County of Anoka and State of Minnesota.

Have caused the same to be surveyed and platted as HARTFIEL ADDITION and do hereby donate and dedicate to the public for public use forever the Drainage and Utility Easements as shown on this plat.

In witness whereof Lowell Lindgren, personal representative of the estate of Lucille Lindgren, deceased, has caused these presents to be signed this 21st day of JUNE, 1984.

And in witness whereof Char-Mar Investment, Inc., a Minnesota Corporation, has caused these presents to be signed by its proper officer this 21st day of JUNE, 1984.

SIGNED: *Lowell Lindgren*
 BY: Lowell Lindgren, Personal Representative of the estate of Lucille Lindgren, deceased.

CHAR-MAR INVESTMENT, INC.
 BY: *Marvella A. Hartfiel* Secretary-Treasurer
 Marvella A. Hartfiel

STATE OF MINNESOTA
 COUNTY OF ANOKA
 The foregoing instrument was acknowledged before me this 21st day of JUNE, 1984 by Lowell Lindgren, Personal Representative of the estate of Lucille Lindgren, deceased, on behalf of the estate.

Gerald L. Sundeen
 GERALD L. SUNDEEN
 NOTARY PUBLIC - MINNESOTA
 ANOKA COUNTY
 My Commission Expires Sep. 11, 1985

Gerald L. Sundeen
 Notary Public
 Anoka County, Minnesota
 My Commission Expires SEPT 11, 1985

STATE OF MINNESOTA
 COUNTY OF ANOKA
 The foregoing instrument was acknowledged before me this 21st day of JUNE, 1984 by Marvella A. Hartfiel, Secretary-Treasurer of Char-Mar Investment, Inc., a Minnesota Corporation, on behalf of the corporation.

Gerald L. Sundeen
 GERALD L. SUNDEEN
 NOTARY PUBLIC - MINNESOTA
 ANOKA COUNTY
 My Commission Expires Sep. 11, 1985

Gerald L. Sundeen
 Notary Public
 Anoka County, Minnesota
 My Commission Expires SEPT 11, 1985

I hereby certify that I have surveyed and platted the property described on this plat as HARTFIEL ADDITION; that this plat is a correct representation of said survey; that all distances are correctly shown on the plat in feet and hundredths of a foot; that all monuments have been correctly placed in the ground as shown on said plat; that the outside boundary lines are correctly designated on said plat; and that there are no wet lands or public highways to be designated on said plat.

James M. Winter
 James M. Winter, Land Surveyor, Minn. Reg. No. T2263

STATE OF MINNESOTA
 COUNTY OF HENNEPIN
 The foregoing instrument was acknowledged before me this 20th day of JUNE, 1984 by James M. Winter, Land Surveyor.

Larry K. Affield
 LARRY K. AFFIELD
 NOTARY PUBLIC - MINNESOTA
 HENNEPIN COUNTY
 My Commission Expires NOV. 13, 1984

Larry K. Affield
 Notary Public
 Hennepin County, Minnesota
 My Commission Expires NOVEMBER 13, 1984

STATE OF MINNESOTA
 CITY OF ANOKA
 This plat of HARTFIEL ADDITION was approved by the City Commission of the City of Anoka, Minnesota at a regular meeting thereof held this 18th day of June, 1984.

Signed *Lorraine Hostetter*, Mayor Attest *Jeany Dulgar*, Clerk
 CITY COMMISSION OF ANOKA, MINNESOTA

STATE OF MINNESOTA
 CITY OF ANOKA
 This plat of HARTFIEL ADDITION was approved by the Planning Commission of the City of Anoka, Minnesota this 5th day of June, 1984.
 Signed *James M. Patten*, Chairman Attest *Robert W. Kirchner*, Secretary

Checked and approved this 22nd day of June, 1984.
Robert W. Anderson
 Anoka County Surveyor

