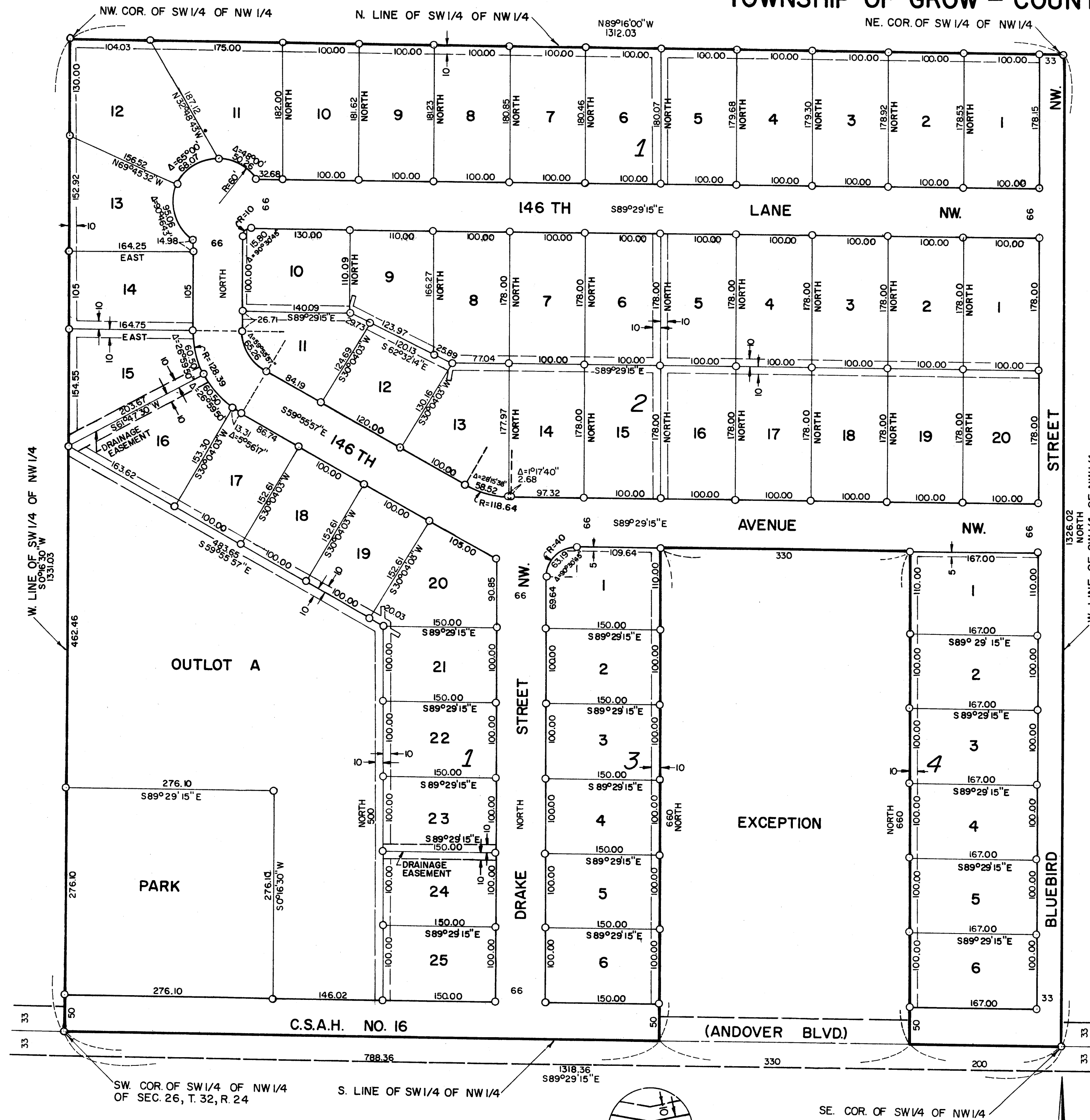


HARTFIEL'S ESTATES

TOWNSHIP OF GROW - COUNTY OF ANOKA



Know all men by these presents that Charles J. Hartfiel and Marvella A. Hartfiel, his wife, owners and proprietors of the following described property situated in the County of Anoka, State of Minnesota, to-wit: All of the SW 1/4 of the NW 1/4 of Section 26, Township 32, Range 24 in Anoka County, Minnesota except the South 660 feet of the West 330 feet of the East 530 feet of said SW 1/4 of the NW 1/4 as measured along the East and South lines of said SW 1/4 of the NW 1/4; have caused the same to be surveyed and platted as HARTFIEL'S ESTATES and do hereby donate and dedicate to the public for public use forever the Boulevard, Avenue, Lane, Street and drainage and utility easements as shown on the annexed plat. In witness whereof, said Charles J. Hartfiel and Marvella A. Hartfiel, his wife, have hereunto set their hands and seals this 12th day of Oct 1971 A.D.

In the presence of
 Witness Calvin Requin Witness Shirley Christy Charles J. Hartfiel
 Witness Mary Erickson Witness Harold E. Mattland Marvella A. Hartfiel

STATE OF MINNESOTA) (SS
 COUNTY OF ANOKA

On this 12th day of Oct 1971 A.D. before me, a notary public, within and for said County and State, personally appeared Charles J. Hartfiel and Marvella A. Hartfiel, his wife, to me personally known, to be the persons described in and who executed the foregoing instrument; and they affirm and acknowledge that they executed the same as their own free act and deed.

STATE OF MINNESOTA) (SS
 COUNTY OF ANOKA

Robert J. Axelle
 Notary Public, Anoka County, Minnesota
 My commission expires June 8, 1977

I do hereby certify that I have surveyed and platted the property described in the dedication of this plat as HARTFIEL'S ESTATES; that this plat is a correct representation of said survey; that all distances are correctly shown on said plat in feet and nearest hundredth of a foot; that all monuments have been correctly placed in the ground as shown on the plat; that the outside boundary lines are correctly designated on the plat; and there are no wet lands or public highways to be designated on said plat other than shown thereon.

Surveyor LeRoy Winner
 Minnesota Registration No. 4987

STATE OF MINNESOTA) (SS
 COUNTY OF ANOKA

Above certificate subscribed and sworn to before me, a Notary Public within and for said County and State on this 12th day of Oct 1971 A.D.

Robert J. Axelle
 Notary Public, Anoka County, Minnesota
 My Commission Expires June 8, 1977

The annexed plat of HARTFIEL'S ESTATES was approved by the Town Board of the Township of Grow at a regular meeting held this 12th day of October 1971 A.D.

Louis Gylfay
 Chairman of Town Board
Mary L. West
 Clerk of Town Board

Recommended for approval this 26th day of Oct 1971 A.D.

E. J. Lundheim
 County Highway Engineer, Anoka County, Minnesota

This plat was approved as to form and execution on this 2nd day of Dec 1971 A.D.

Robert Johnson
 County Attorney, Anoka County, Minnesota

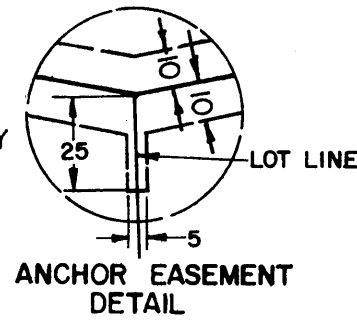
This plat was checked and approved on this 26th day of October 1971 A.D.

Robert W. Anderson
 County Surveyor, Anoka County, Minnesota

This plat was approved and accepted by the Board of County Commissioners of the County of Anoka, State of Minnesota, at a regular meeting held this 26th day of Oct 1971 A.D.

Albert R. Rosdahl
 Chairman
Charles P. Lefebvre
 County Auditor

DASHED LINES DENOTE UTILITY & DRAINAGE EASEMENTS



SCALE: 1" = 100'
 O DENOTES IRON PIN

LEROY H. WINNER & ASSOC., INC. - LAND SURVEYORS

"NO DELINQUENT TAXES"

January 25 1972
Robert Johnson
 Auditor, Anoka County
Charles Axelle
 Deputy

362230
 OFFICE OF REGISTER OF DEEDS
 STATE OF MINNESOTA, COUNTY OF ANOKA

I hereby certify that the within instrument was filed in this office for record on the 26th day of JAN 26 1972 A.D., 10:55 at 9:45 o'clock A.M., and was duly recorded in book 1 of Plat page 2

LeRoy Winner
 Register of Deeds
 By Margaret Rosdahl
 Deputy