

HARVEST ESTATES 2ND ADDITION

City of Ramsey
County of Anoka
Sec. 23, T. 32, R. 25

KNOW ALL PERSONS BY THESE PRESENTS: That Meadow Creek Builders, Inc., a Minnesota corporation, owner of the following described property:

Lot 25, Block 1, HARVEST ESTATES, Anoka County, Minnesota.

Has caused the same to be surveyed and platted as HARVEST ESTATES 2ND ADDITION and does hereby dedicate to the public for public use the public ways and the drainage and utility easements as created by this plat.

In witness whereof said Meadow Creek Builders, Inc., a Minnesota corporation, has caused these presents to be signed by its proper officer this 3 day of

May, 2019

MEADOW CREEK BUILDERS, INC.

[Signature] (Signature)
Michael D. Pomerleau, Vice President

STATE OF MINNESOTA
COUNTY OF Hennepin

This instrument was acknowledged before me this 3 day of May, 2019 by Michael D. Pomerleau, Vice President of Meadow Creek Builders, Inc., a Minnesota corporation.

[Signature] (Signature)

Christeen Hennes (Print)

Notary Public, Hennepin County, Minnesota

My Commission Expires Jan 31, 2020

I Lynn P. Caswell do hereby certify that this plat was prepared by me or under my direct supervision; that I am a duly Licensed Land Surveyor in the State of Minnesota; that this plat is a correct representation of the boundary survey; that all mathematical data and labels are correctly designated on this plat; that all monuments depicted on this plat have been, or will be correctly set within one year; that all water boundaries and wet lands, as defined in Minnesota Statutes, Section 505.01, Subd. 3, as of the date of this certificate are shown and labeled on this plat; and all public ways are shown and labeled on this plat.

Dated this 30th day of April, 2019.

[Signature]
Lynn P. Caswell, Licensed Land Surveyor
Minnesota License No. 13057

STATE OF MINNESOTA
COUNTY OF Hennepin

This instrument was acknowledged before me this 30 day of April, 2019 by Lynn P. Caswell.

[Signature] (Signature)

Michelle Marie Chapman (Print)

Notary Public, Dakota County, Minnesota

My Commission Expires 1/31/20

CITY COUNCIL, CITY OF RAMSEY, MINNESOTA

This plat of HARVEST ESTATES 2ND ADDITION was approved and accepted by the City Council of the City of Ramsey, Minnesota at a regular meeting thereof held this 9th day of April, 2019, and said plat is in compliance with the provisions of Minnesota Statutes, Section 505.03, Subd. 2.

By: [Signature] Mayor
By: [Signature] Clerk

COUNTY SURVEYOR

I hereby certify that in accordance with Minnesota Statutes, Section 505.021, Subd. 11, this plat has been reviewed and approved this 3rd day of May, 2019.

By: [Signature]
Charles F. Gitzen
Anoka County Surveyor

COUNTY AUDITOR/TREASURER

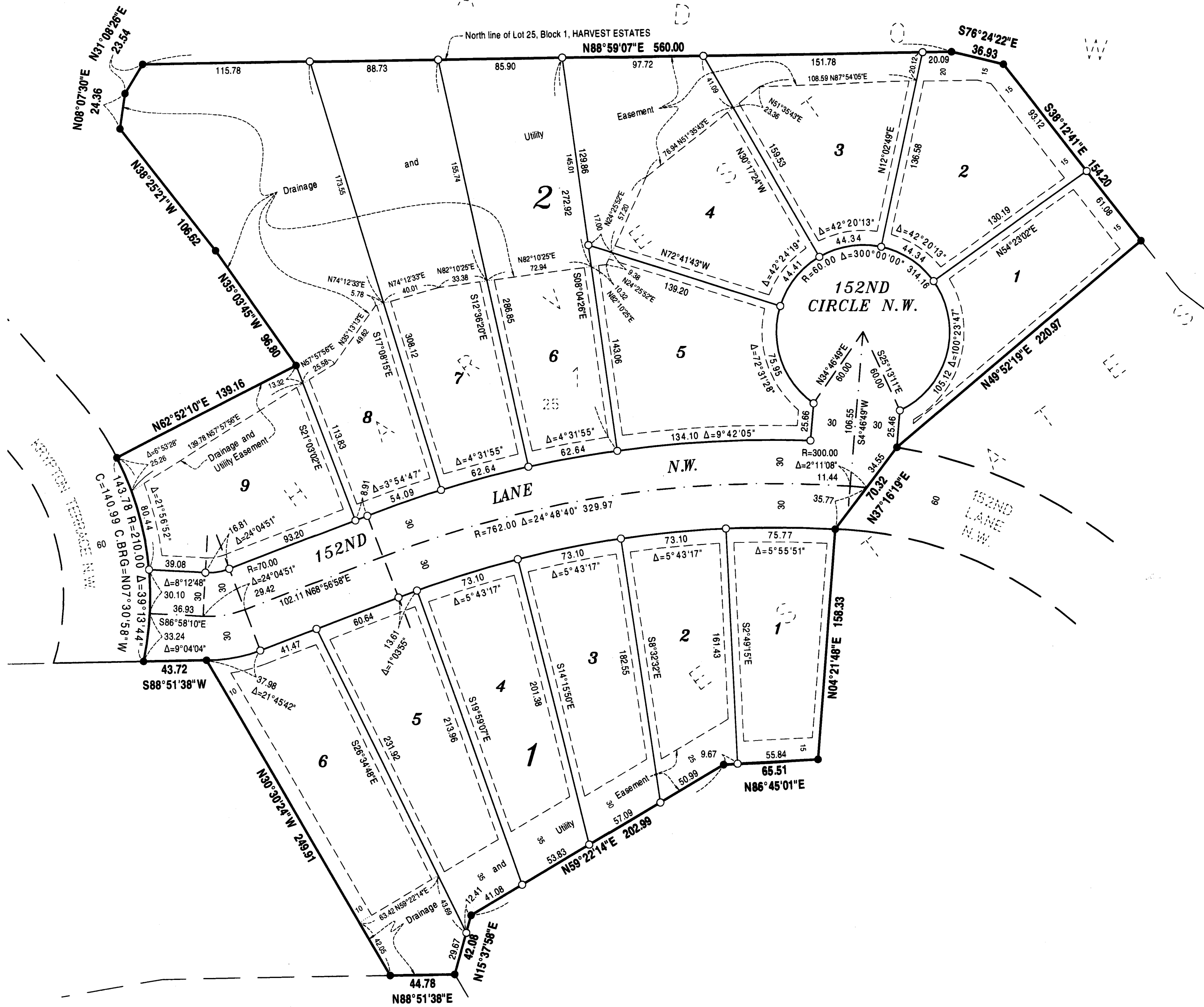
Pursuant to Minnesota Statutes, Section 505.021, Subd. 9, taxes payable in the year 2019 on the land hereinbefore described have been paid. Also, pursuant to Minnesota Statutes, Section 272.12, there are no delinquent taxes and transfer entered this 3 day of May, 2019.

[Signature]
Jonell M. Sawyer
Property Tax Administrator
By: [Signature], Deputy

COUNTY RECORDER/REGISTRAR OF TITLES
COUNTY OF ANOKA, STATE OF MINNESOTA

I hereby certify that this plat of HARVEST ESTATES 2ND ADDITION was filed in the office of the County Recorder/Registrar of Titles for public record on this 3 day of May, 2019, at 11:21 o'clock A.M. and was duly recorded as Document Number 2226009.006

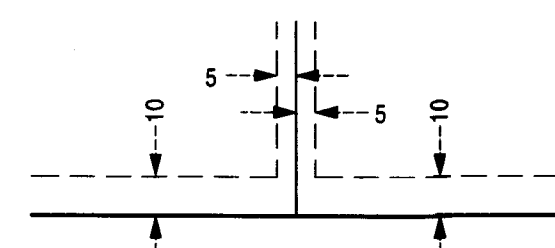
[Signature]
Jonell M. Sawyer
County Recorder/Registrar of Titles
By: [Signature], Deputy



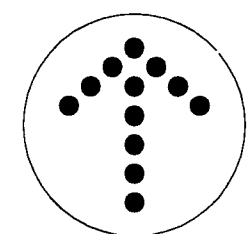
M E A D O W

● Denotes 1/2 inch iron pipe monument found.
○ Denotes 1/2 inch by 14 inch iron pipe monument set and marked by License No. 13057.
Bearings shown are based upon the North line of Lot 25, Block 1, HARVEST ESTATES, which has an assumed bearing of N 88°59'07" E.

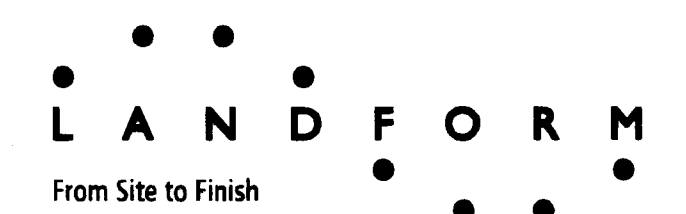
Drainage and Utility Easements are shown thus:



Being 5 feet in width and adjoining side lot lines, unless otherwise shown, and 10 feet in width and adjoining street lines as shown on the plat.



NORTH
1 INCH = 50 FEET
0 50 100
SCALE IN FEET



#56