

HASSAN ADDITION

CITY OF CIRCLE PINES
ANOKA COUNTY, MINNESOTA.

LOT SURVEYS COMPANY

Land Surveyors

KNOW ALL MEN BY THESE PRESENTS: That Del T. Hassan and Cynthia D. Hassan, his wife, owners and proprietors, of the following described property situate in the County of Anoka, State of Minnesota to-wit:

Government Lot 1, Section 36, Township 31, Range 23, Anoka County, Minnesota; except those parts thereof lying within the 4 following described parcels:

1. The plat of Circle Pines, Golden Lake, East Addition Part 1, Anoka County, Minnesota
2. The plat of Circle Pines, Golden Lake, East Addition Part 2, Anoka County, Minnesota.
3. The plat of Circle Pines, Golden Lake, South Addition Part 1, Anoka County, Minnesota.
4. The part which lies South of the following described line: Starting from a point on the West line of said Section 36, at a distance of 1717.60 feet South of the Northwest corner thereof; thence deflect to the left at an angle of 89 degrees 30 minutes 00 seconds a distance of 2646.40 feet, to the point of beginning of the tract of land to be described, said point being the intersection of the Southerly line of Lot 1, Block 3, Golden Lake, South Addition Part 1, and the North-South one-quarter line of Section 36; thence deflect to the right at an angle of 16 degrees 11 minutes 19 seconds, along the southerly line of Lots 1 through 7 of said Block 3, a distance of 422.20 feet; thence deflect to the left at an angle of 28 degrees 41 minutes 47 seconds a distance of 161.10 feet; thence deflect to the right at an angle of 48 degrees 23 minutes 26 seconds a distance of 63.20 feet, to the most Westerly corner of Lot 1, Block 4, said Addition; thence deflect to the left at an angle of 38 degrees 03 minutes 50 seconds a distance of 180.70 feet; thence deflect to the left at an angle of 67 degrees 20 minutes 47 seconds a distance 108.90 feet; thence deflect to the right at an angle of 31 degrees 12 minutes 46 seconds a distance of 157.90 feet, to the Southern most point of East line of Lot 5, Block 4, said Addition; thence deflect to the right at an angle of 65 degrees 44 minutes 20 seconds a distance of 118.30 feet; thence deflect to the right an angle of 33 degrees 40 minutes 52 seconds a distance of 140.50 feet; thence deflect to the right at an angle of 30 degrees 14 minutes 22 seconds a distance of 130.20 feet; thence deflect to the left at an angle of 79 degrees 35 minutes 57 seconds a distance of 166.60 feet; thence to a point of intersection with the West line of the Southeast Quarter of the Northeast Quarter of said Section 36, distant 605.40 feet South of the Northwest corner of said Southeast Quarter of the Northeast Quarter of Section 36, and there terminating.

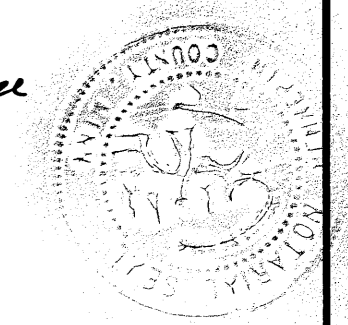
Have caused the same to be surveyed and platted as HASSAN ADDITION and do hereby donate and dedicate to the public for public use forever the Circle and Utility and Drainage Easements as shown on the plat. In witness whereof said Del T. Hassan and Cynthia D. Hassan, his wife, have hereunto set their hands and seals this 24th day of January A.D., 1978.
Signed:

Del T. Hassan
Del T. Hassan

Cynthia D. Hassan
Cynthia D. Hassan

State of Minnesota
County of Hennepin The foregoing instrument was acknowledged before me this 24th day of January A.D., 1978, by Del T. Hassan and Cynthia D. Hassan, his wife.

Gerald T. Coyne Gerald T. Coyne
Notary Public, Hennepin Co., Minnesota
My Commission Expires Sept. 14th 1983

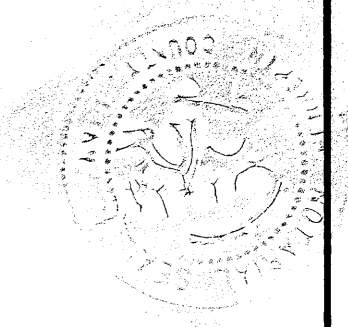


I hereby certify that I have surveyed and platted the property described on this plat as HASSAN ADDITION; that this plat is a correct representation of said survey; that the distances are correctly shown on said plat in feet and hundredths of a foot; that all monuments have been correctly placed in the ground as shown on said plat; that the outside boundary lines are correctly designated on said plat; and that there are no wet lands or public highways to be designated other than as shown thereon.

Raymond A. Prash
Raymond A. Prash, Registered Land Surveyor
Minn. Reg. No. 6743

State of Minnesota
County of Hennepin The foregoing instrument was acknowledged this 24th day of JANUARY A.D., 1978, by Raymond A. Prash, Registered Land Surveyor.

Gerald T. Coyne
Gerald T. Coyne, Notary Public, Henn. Co., Minn.
My Commission Expires September 14, 1983



We hereby certify that the City Council of the City of Circle Pines, Anoka County, Minnesota duly accepted and approved this plat of HASSAN ADDITION at a regular meeting thereof held this 14 day of February A.D., 1978.

CITY COUNCIL OF CIRCLE PINES, MINNESOTA

By Patricia J. Oman Mayor By St. H. Dammheim Clerk

Checked and approved this 22nd day of March A.D., 1978.

Robert W. Anderson
County Surveyor, Anoka County, Minnesota.

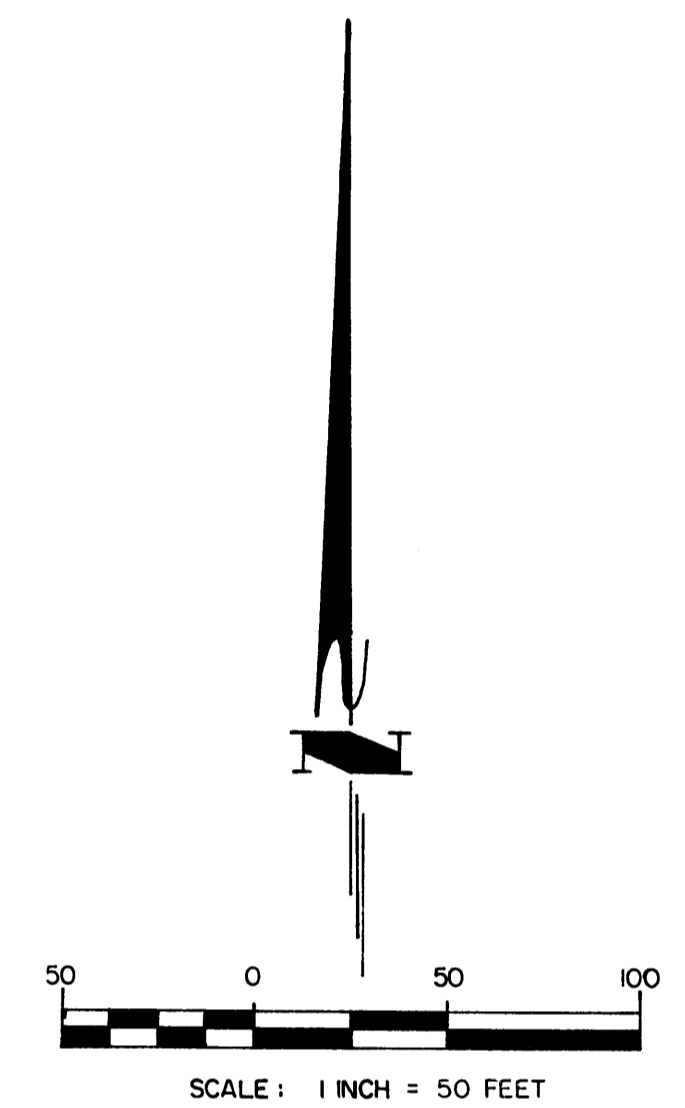
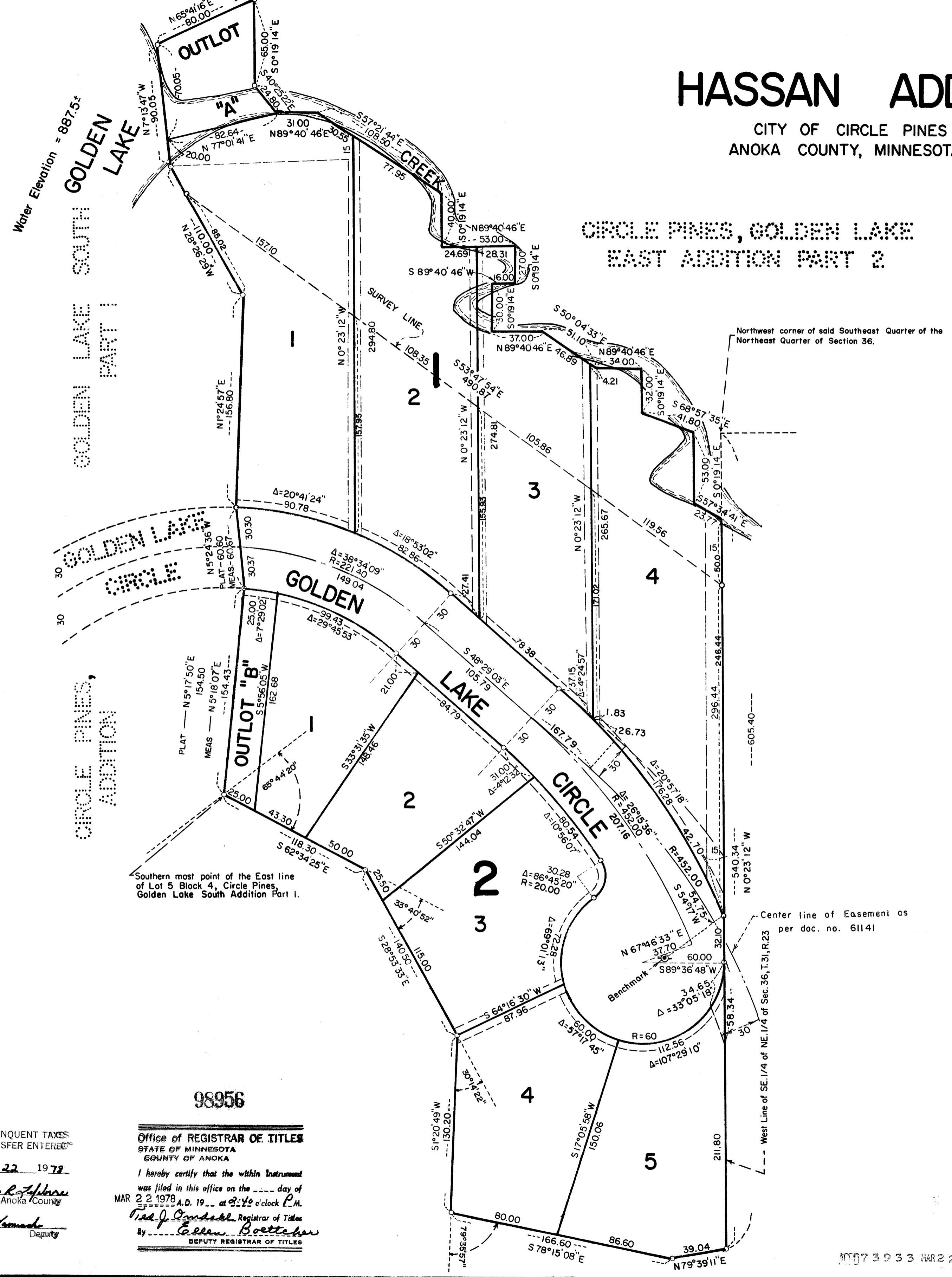
"NO DELINQUENT TAXES
AND TRANSFER ENTERED"

Mar 22 1978
Charles R. Scherer
Auditor, Anoka County
BY JP Amacher
Deputy

HASSAN ADDITION

CITY OF CIRCLE PINES
ANOKA COUNTY, MINNESOTA.

CIRCLE PINES, GOLDEN LAKE EAST ADDITION PART 2



Denotes utility and drainage easements being 5 feet in width and parallel to lot lines unless otherwise indicated.

LOT SURVEYS COMPANY LAND SURVEYORS

o- Denotes Iron Monument.
 Bearings Shown are Assumed.
 January 1978.
 BENCHMARK: Top of hydrant in center of circle. Elevation - 904.20 feet (1929 Adj.)

"NO DELINQUENT TAXES AND TRANSFER ENTRIES"
 Mar 22 1978
 Charles R. Johnson
 Auditor, Anoka County
 BY *F. E. Comand*
 Deputy

98956
 Office of REGISTRAR OF TITLES
 STATE OF MINNESOTA
 COUNTY OF ANOKA
 I hereby certify that the within Instrument was filed in this office on the 22 day of MAR 22 1978 A.D. 1978 at 2:40 o'clock P.M.
Neil J. O'Connell Registrar of Titles
 By *Eileen Rottcher*
 DEPUTY REGISTRAR OF TITLES