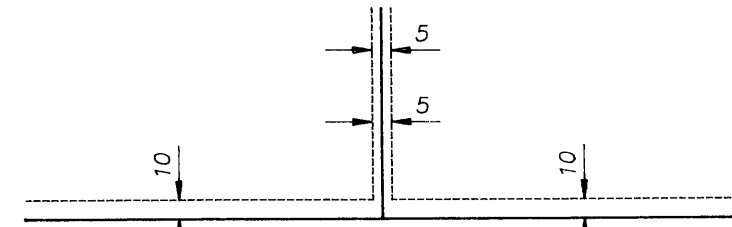


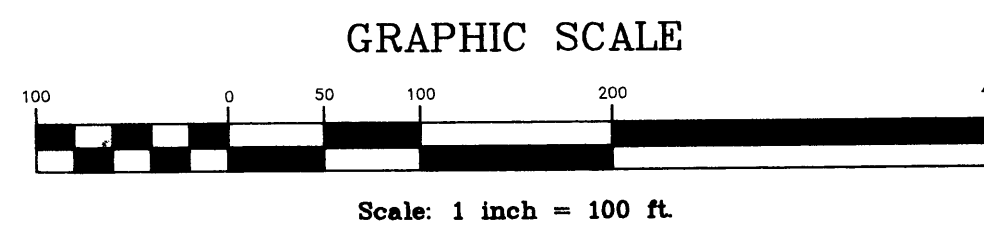
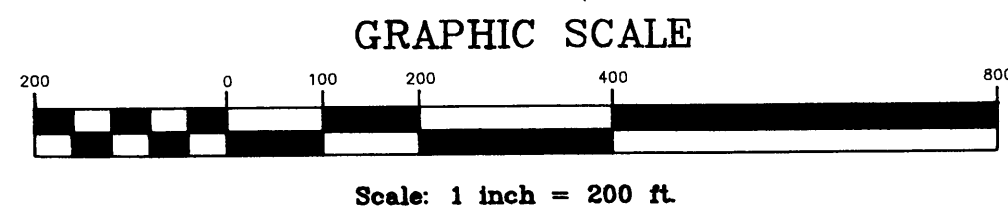
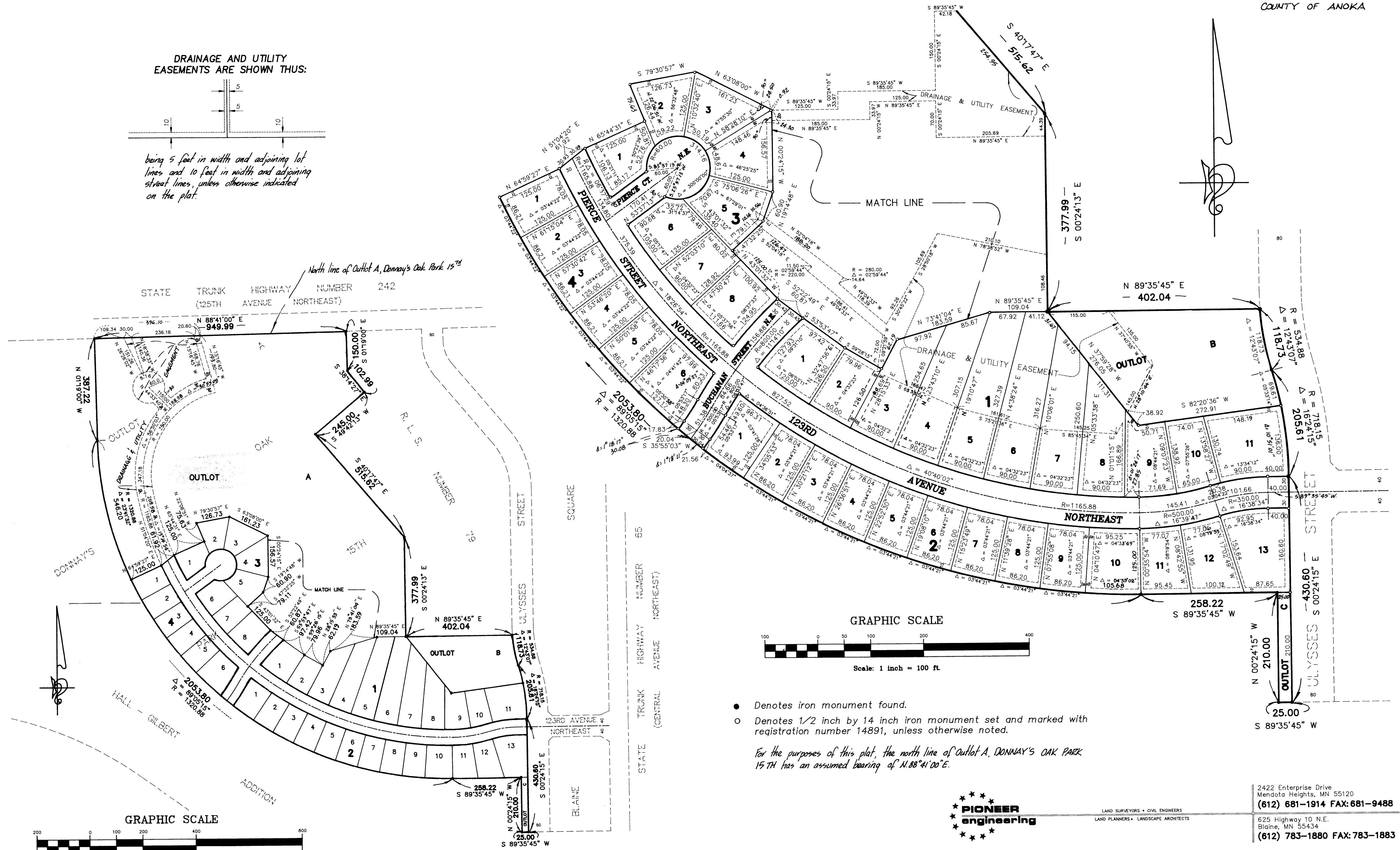
HEATHERWOOD 1ST ADDITION

CITY OF BLAINE
COUNTY OF ANOKA

DRAINAGE AND UTILITY
EASEMENTS ARE SHOWN THUS:



being 5 feet in width and adjoining lot lines and 10 feet in width and adjoining street lines, unless otherwise indicated on the plat.



- Denotes iron monument found.
- Denotes 1/2 inch by 14 inch iron monument set and marked with registration number 14891, unless otherwise noted.

For the purposes of this plat, the north line of Outlot A, DONNAY'S OAK PARK 15TH has an assumed bearing of N.88°41'00"E.



LAND SURVEYORS • CIVIL ENGINEERS
LAND PLANNERS • LANDSCAPE ARCHITECTS

2422 Enterprise Drive
Mendota Heights, MN 55120
(612) 681-1914 FAX: 681-9488
625 Highway 10 N.E.
Blaine, MN 55434
(612) 783-1880 FAX: 783-1883