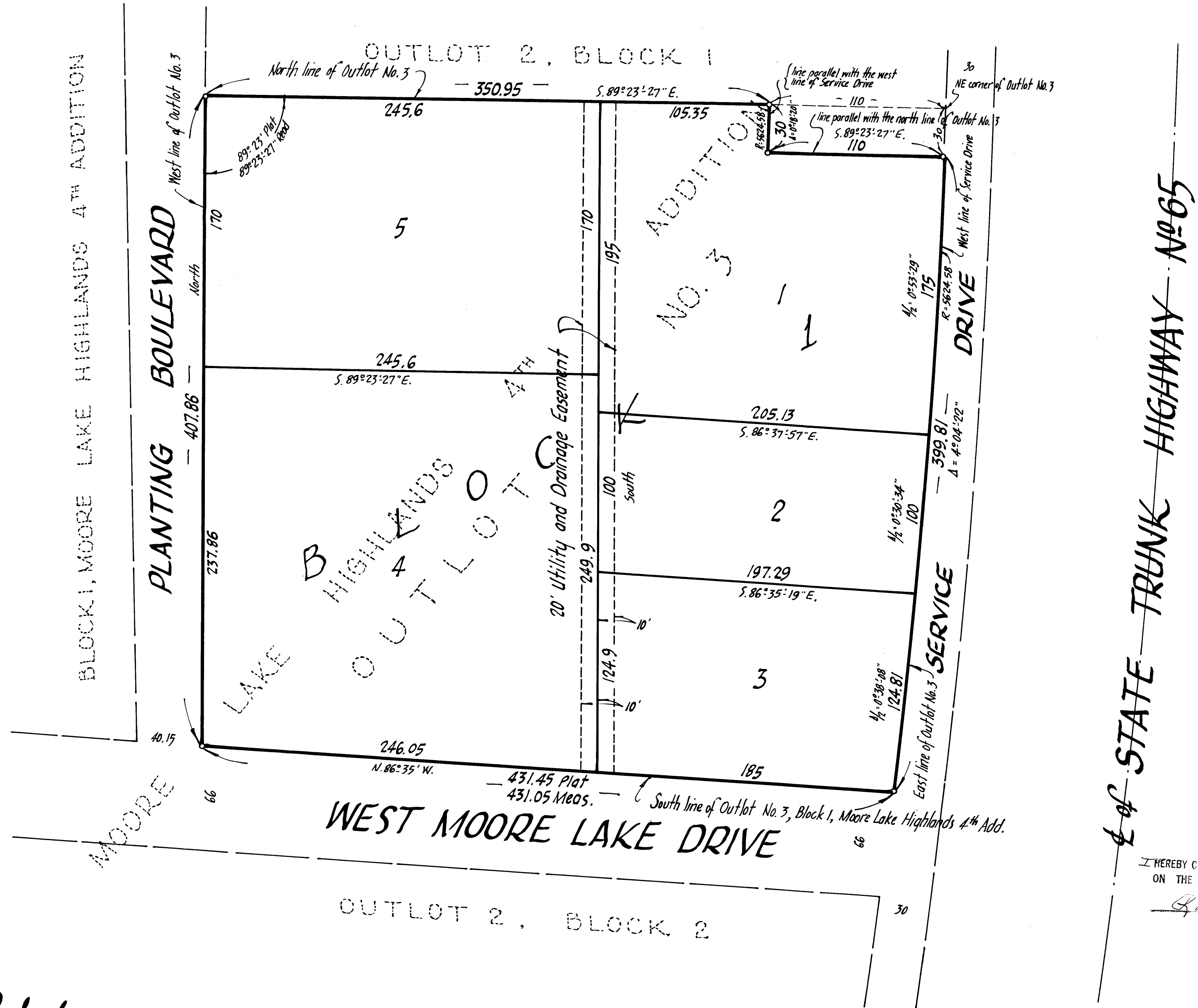


HERWAL 2ND ADDITION

- City of Fridley - County of Anoka -

o Denotes Iron Monument Bearings are assumed

NORTH



KNOW ALL MEN BY THESE PRESENTS: that Herwal Inc., a Minnesota Corporation, owner and proprietor of the following described property situate in the State of Minnesota and County of Anoka, to-wit: Outlot No. 3, Moore Lake Highlands 4TH Addition, excepting therefrom the following part: Commencing at the Northeast corner thereof and proceeding thence Southerly on the West line of the service road for a distance of 30 feet and proceeding thence West and parallel with the North line of said outlet for a distance of 110 feet, thence Northerly parallel with the West line of said service road to the North line of said outlet and proceeding thence East on said North line to the point of beginning; has caused the same to be surveyed and platted as HERWAL 2ND ADDITION; subject to the Utility and Drainage Easement as shown on the annexed plat; in witness whereof Herwal Inc. has caused these presents to be signed by its proper officers and its corporate seal to be hereunto affixed this 15 day of AUGUST A.D. 1963.

In Presence of
 As to George L. Walquist and Harold W. Hermann, President and Secretary-Treasurer of HERWAL INC.,
George L. Walquist President
Harold W. Hermann Secretary-Treasurer
John v. Terpstra (Signature)
George L. Walquist (Signature)
Harold W. Hermann (Signature)

State of Minnesota On this 15 day of AUGUST A.D. 1963, before me a Notary Public within and for said County and State, personally appeared George L. Walquist and Harold W. Hermann, to me personally known, who being by me duly sworn, did say that they are the President and Secretary-Treasurer respectively of Herwal Inc., the corporation named in the foregoing instrument; that the seal affixed to said instrument is the corporate seal of said corporation; and that said instrument was signed and sealed in behalf of said corporation by authority of its Board of Directors, and said George L. Walquist and Harold W. Hermann acknowledged said instrument to be the free act and deed of said corporation.

E. E. Orwoll
 Notary Public, Anoka County, Minnesota
 My Commission Expires Notary Public, Anoka County, Minn.
 My Commission Expires Jan. 30, 1968

I hereby certify that I have surveyed and platted the property described on this plat as HERWAL 2ND ADDITION; that this plat is a correct representation of said survey; that all distances are correctly shown on the plat in feet and decimals of a foot; that the monuments for guidance of future surveys have been correctly placed in the ground as shown on the plat; that the outside boundary lines are correctly designated on the plat, and that there are no wet lands or public highways to be designated on said plat other than as shown thereon.

E. A. Rottman
 Surveyor - Minnesota Registration No. 3795

State of Minnesota The surveyors certificate subscribed and sworn to before me, a Notary Public, this 15th day of August A.D. 1963.

Clarence P. Olson
 Notary Public, Hennepin County, Minnesota
 My Commission Expires Notary Public, Hennepin County, Minn.
 My Commission Expires Notary Public, Hennepin County, Minn.

We hereby certify that the City Council of the City of Fridley, Anoka County, Minnesota, duly accepted and approved the annexed plat of HERWAL 2ND ADDITION, at a regular meeting thereof held this 5th day of August A.D. 1963.

CITY OF FRIDLEY, MINNESOTA
 By William J. Hill Mayor
 By Martin J. Brunner Clerk

Checked and approved this 19th day of August A.D. 1963.

Robert W. Anderson Anoka County Surveyor

I HEREBY CERTIFY THAT TAXES FOR THE YEAR 1962 ON THE LANDS DESCRIBED WITHIN ARE PAID

Robert A. Peterson
 County Treasurer
 by S. Larson deputy

TAXES PAID
 This 19th day of Aug 1963
Kenneth Campbell
 Auditor, Anoka County, Minn.
Wayne A. Mueller Deputy

251296
 OFFICE OF REGISTER OF DEEDS
 STATE OF MINNESOTA, COUNTY OF ANOKA }
 I hereby certify that the within instrument was filed in this office for record on the 15th day of AUGUST A.D. 1963 at 2 o'clock P.M. and was duly recorded in book 14 of Platmaps.

Gertrude Skisser
 Register of Deeds
 By Margaret Russell Deputy

Suburban Engineering, Inc.
 — Engineers — Surveyors —