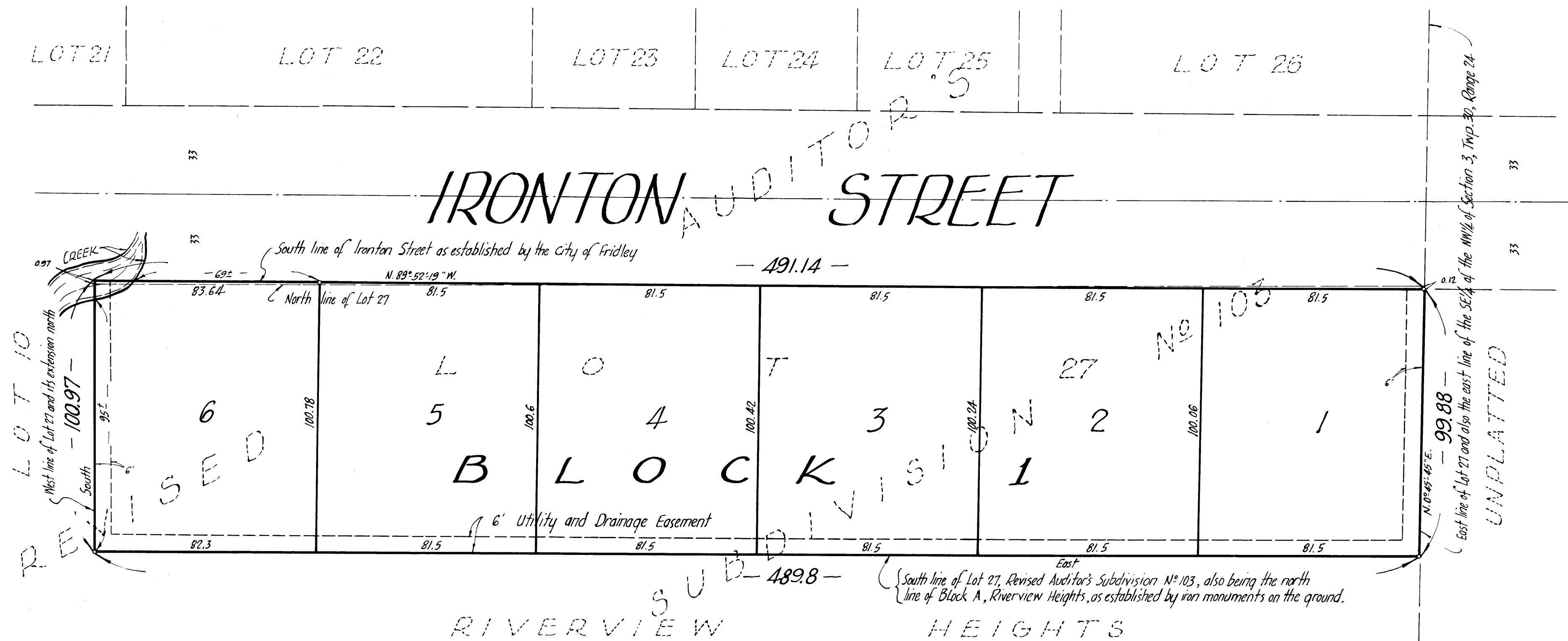


HERVAL ADDITION

- CITY OF FRIDLEY - COUNTY OF ANOKA -



• Denotes Iron Monument
 Bearings are assumed
 Scale 1"=30' November, 1962

Suburban Engineering, Inc.
 -Engineers and Surveyors-

Office of REGISTRAR OF TITLES
 STATE OF MINNESOTA
 COUNTY OF ANOKA
 I hereby certify that the within instrument
 was filed in this office on the _____ day of
 APR 4 1963 A. D. 1963 at 10:45'clock P. M.
 Kertrude Skinner, Registrar of Titles
 by Ellen Boettcher
 DEPUTY REGISTRAR OF TITLES

KNOW ALL MEN BY THESE PRESENTS: that Herwal Inc., a Minnesota Corporation, owner and proprietor of the following described property situate in the State of Minnesota and County of Anoka, to-wit: That part of Lot Eight (8) Auditor's Subdivision Numbered One Hundred Three (103), that is now known as Lot Twenty-seven (27), Revised Auditor's Subdivision Numbered One Hundred Three (103), together with that part of Lot Eight (8), Auditor's Subdivision Numbered One Hundred Three (103), lying South of the South line of Irononton Street; so called; and North of the North line of said Lot Twenty-seven (27), Revised Auditor's Subdivision Numbered One Hundred Three (103), and lying between the Northerly extension of the East and West lines of said Lot Twenty-seven (27), according to the map or plat thereof on file and of record in the office of the Registrar of Titles in Anoka County, Minnesota; has caused the same to be surveyed and platted as HERVAL ADDITION; subject to the Utility and Drainage Easements as shown on the annexed plat; in witness whereof Herwal Inc. has caused these presents to be signed by its proper officers and its corporate seal to be hereunto affixed this 2nd day of April, A.D. 1963.

In Presence of
 As to George L. Walquist and Harold W. Hermann
 E. Edward Orwoc
 HERVAL INC.
 George L. Walquist President
 Harold W. Hermann Vice President

State of Minnesota County of Anoka On this 2 day of April, A.D. 1963, before me a Notary Public within and for said County and State, personally appeared George L. Walquist and Harold W. Hermann, to me personally known, who being by me duly sworn, did say that they are the President and Vice President respectively of Herwal Inc., the corporation named in the foregoing instrument; that the seal affixed to said instrument is the corporate seal of said corporation; and that said instrument was signed and sealed in behalf of said corporation by authority of its Board of Directors, and said George L. Walquist and Harold W. Hermann acknowledged said instrument to be the free act and deed of said corporation.

TAXES PAID
 This 3rd day of Apr, 1963
 Kenneth W. Campbell
 Auditor, Anoka County, Minn.
 by Delia E. Sage Deputy

I hereby certify that I have surveyed and platted the property described on this plat as HERVAL ADDITION; that this plat is a correct representation of said survey; that all distances are correctly shown on the plat in feet and decimals of a foot; that the monuments for guidance of future surveys have been correctly placed in the ground as shown on the plat; that the outside boundary lines are correctly designated on the plat, and that there are no wet lands or public highways to be designated on said plat other than as shown thereon.

E. A. Rattus
 Surveyor - Minnesota Registration No. 3795
 State of Minnesota County of Hennepin The surveyors certificate subscribed and sworn to before me, a Notary Public, this 17th day of December, A.D. 1962.
Wesley O. Olson
 Notary Public, Hennepin County, Minnesota
 My Commission Expires _____

We hereby certify that the City Council of the City of Fridley, Anoka County, Minnesota, duly accepted and approved the annexed plat of HERVAL ADDITION, at a regular meeting thereof held this 3 day of DECEMBER, A.D. 1962.

CITY OF FRIDLEY, MINNESOTA
 By William J. Neel Mayor
 By Morrison Brunner Clerk
 Checked and approved this 3rd day of April, A.D. 1963.
Robert W. Anderson
 Anoka County Surveyor
 I HEREBY CERTIFY THAT TAXES FOR THE YEAR 1962 ON THE LANDS DESCRIBED WITHIN ARE PAID
Robert A. Peterson
 County Treasurer
W. Peterson Deputy