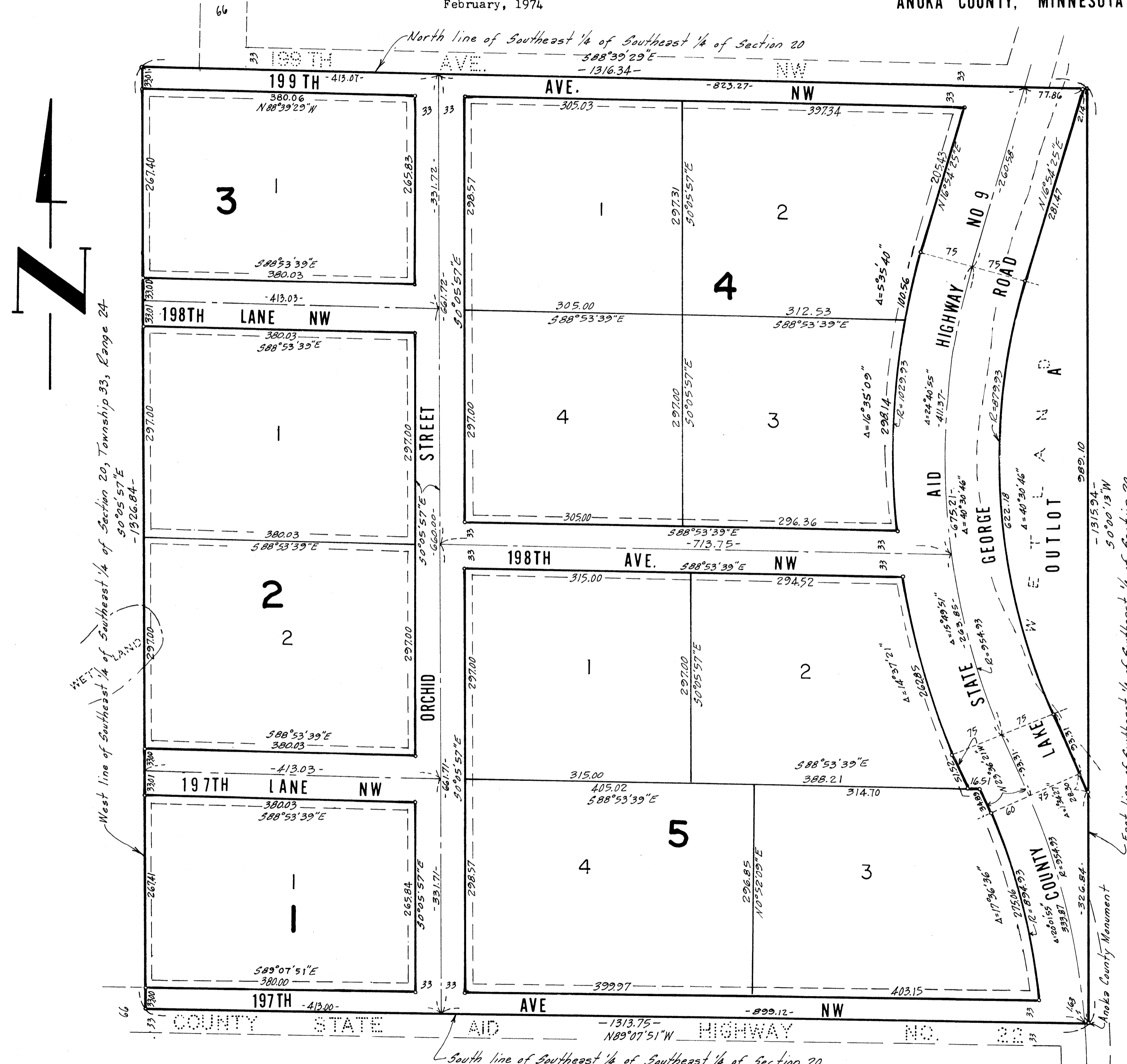


LOT SURVEYS COMPANY
LAND SURVEYORS

Bearings shown are assumed
Scale: 1 inch = 100 feet
O Denotes Iron Monument
February, 1974

HICKEY LAKE ADDITION

OAK GROVE TOWNSHIP
ANOKA COUNTY, MINNESOTA



KNOW ALL MEN BY THESE PRESENTS: That Smith and Anderson Inc., a Minnesota corporation, owner and proprietor of the following described property situate in the County of Anoka, State of Minnesota to-wit: The Southeast 1/4 of the Southeast 1/4 of Section 20, Township 33, Range 24. Has caused the same to be surveyed and platted as HICKEY LAKE ADDITION and do hereby donate and dedicate to the public for public use forever the Lanes, Avenues and Road as shown on the plat. Also dedicating to the County of Anoka, the right of access to County State Aid Highway No. 9 from Lots 2 and 3, Block 4, and Lots 2 and 3 Block 5. Also dedicating the Utility and Drainage Easements as shown on the plat. In witness whereof said Smith and Anderson Inc., a Minnesota corporation, has caused these presents to be signed by its proper officers and its corporate seal to be hereunto affixed on this 26th day of March A.D., 1974.

Signed: Smith and Anderson Inc.

David W. Anderson
David W. Anderson - President

Ronald E. Smith
Ronald E. Smith - Assistant Secretary

State of Minnesota
County of Anoka The foregoing instrument was acknowledged before me this 26th day of March A.D., 1974 by David W. Anderson, President and Ronald E. Smith, Assistant Secretary of Smith and Anderson Inc., a Minnesota corporation, on behalf of the corporation.

Anthony J. Maciaszek
Notary Public, _____ County, Minnesota
My Commission Expires 6-11-77

I hereby certify that I have surveyed and platted the land described in the dedication on this plat as HICKEY LAKE ADDITION; that this plat is a correct representation of said survey; that all distances are correctly shown on said plat; that all monuments have been correctly placed in the ground as shown; and that the outside boundaries of the land are correctly designated on said plat; and that there are no wet lands or public highways to be designated other than as shown thereon.

Raymond A. Prasch
Surveyor - Minnesota Registration Number 6743

State of Minnesota
County of Hennepin The foregoing instrument was acknowledged this 25th day of March A.D., 1974, by Raymond A. Prasch, Registered Land Surveyor.

Gerald T. Coyne
Gerald T. Coyne - Notary Public, Hennepin County, Minn.
My Commission Expires September 14, 1976

Annexed plat of HICKEY LAKE ADDITION was approved and accepted by the Board of County Commissioners of the County of Anoka, State of Minnesota, at a regular meeting thereof held this 26th day of March A.D., 1974.

Robert C. Lechick
Chairman

Charles R. Lefebvre
County Auditor

This plat was approved as to form and execution on this 26th day of March A.D., 1974.

Stephen H. Mantelero
Asst. County Attorney, Anoka County, Minnesota

Recommended for approval this 26th day of March A.D., 1974.

E. J. Lundblom
Anoka County Highway Engineer

Checked and approved this 26th day of March A.D., 1974.

Robert W. Anderson
Anoka County Surveyor

The annexed plat of HICKEY LAKE ADDITION was approved by the Town Board of the Township of Oak Grove at a regular meeting held this 25th day of March A.D., 1974.

Ernest W. Knutson
Chairman of Town Board

Walter J. Jorgensen
Clerk of Town Board

Utility and Drainage Easements shown thus being 10 feet in width and parallel with lot lines unless otherwise indicated.

406724
OFFICE OF REGISTER OF DEEDS
STATE OF MINNESOTA, COUNTY OF ANOKA
I hereby certify that the within instrument was filed in this office for record on the 26th day of March A.D., 1974 at 2:15 o'clock P.M., and was duly recorded in book 15 of Plats, page 14.
Ted J. Oswald
By Margaret Russell
Register of Deeds

"NO DELINQUENT TAXES AND TRANSFER ENTERED"
Mar. 26 1974
Charles R. Lefebvre
Auditor, Anoka County
BY Nancy C. Aupperle
Deputy