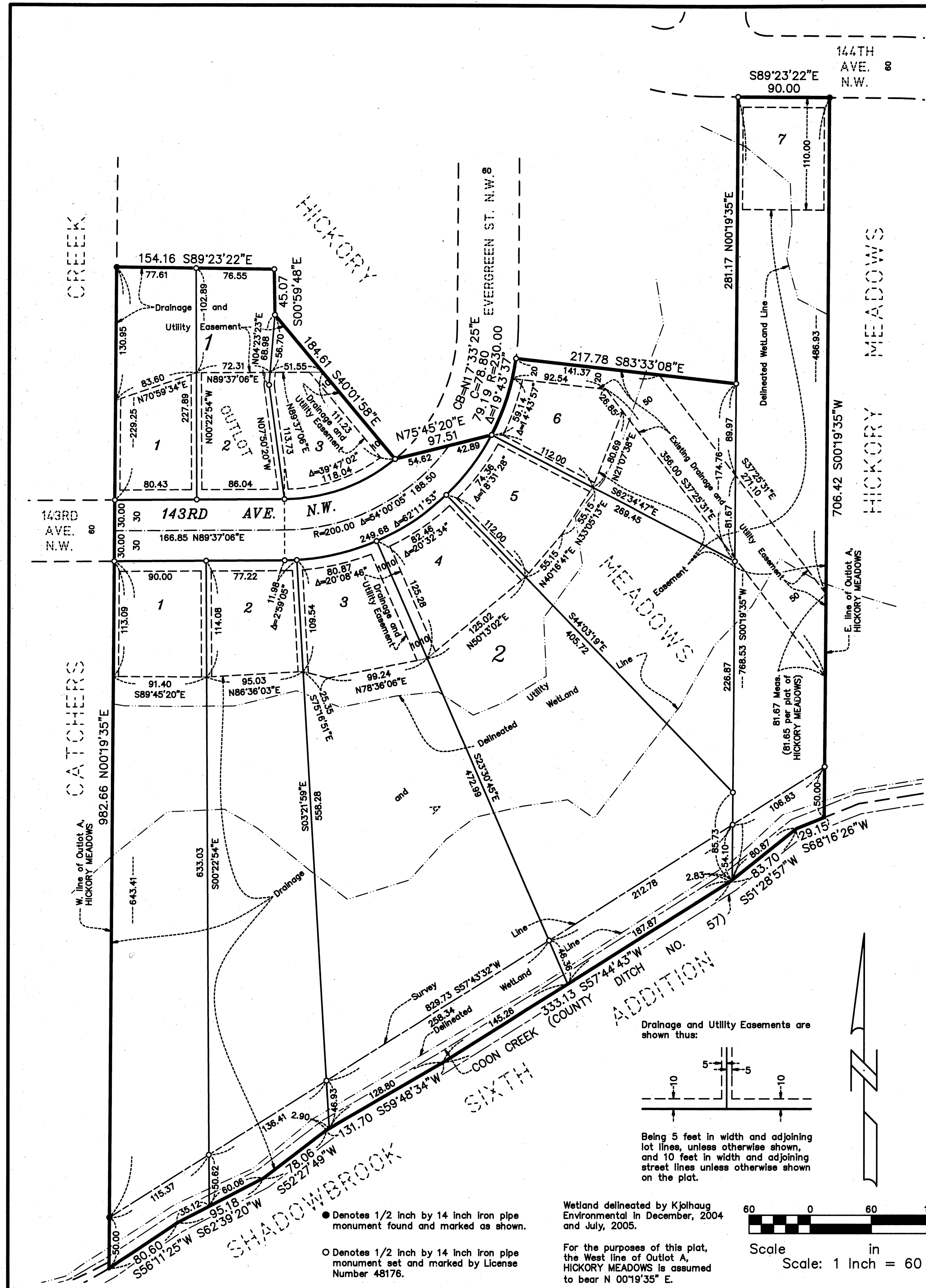


HICKORY MEADOWS 2ND ADDITION

BK 79 of Abst
Page 10

City of Andover
County of Anoka
Sec. 25, T. 32, R. 24



KNOW ALL PERSONS BY THESE PRESENTS: That Mark R. Smith owner, and Kathleen A. Smith, his wife, of the following described property:

Outlot A, HICKORY MEADOWS, Anoka County, Minnesota.

Have caused the same to be surveyed and platted as HICKORY MEADOWS 2ND ADDITION and do hereby dedicate to the public for public use the public way and the drainage and utility easements as created by this plat.

In witness whereof said Mark R. Smith and Kathleen A. Smith, husband and wife, have hereunto set their hands this 18 day of May, 2016.

Mark R. Smith
Mark R. Smith

Kathleen A. Smith
Kathleen A. Smith

STATE OF MINNESOTA
COUNTY OF Ramsey

This instrument was acknowledged before me this 18 day of May, 2016 by Mark R. Smith and Kathleen A. Smith, husband and wife.

[Signature]

Notary Public, Washington County, Minnesota
My Commission Expires 1-31-2020

I Eric B. Lindgren do hereby certify that this plat was prepared by me or under my direct supervision; that I am a duly Licensed Land Surveyor in the State of Minnesota; that this plat is a correct representation of the boundary survey; that all mathematical data and labels are correctly designated on this plat; that all monuments depicted on this plat have been, or will be correctly set within one year; that all water boundaries and wet lands, as defined in Minnesota Statutes, Section 505.01, Subd. 3, as of the date of this certificate are shown and labeled on this plat; and all public ways are shown and labeled on this plat.

Dated this 22nd day of FEBRUARY, 2016.

E. B. Lindgren

Eric B. Lindgren, Licensed Land Surveyor
Minnesota License No. 48176

STATE OF MINNESOTA
COUNTY OF HENNEPIN

This instrument was acknowledged before me this 22nd day of February, 2016 by Eric B. Lindgren.

[Signature]

Notary Public, DAVOTA County, Minnesota
My Commission Expires 01/31/2017

CITY COUNCIL, CITY OF ANDOVER, MINNESOTA

This plat of HICKORY MEADOWS 2ND ADDITION was approved and accepted by the City Council of the City of Andover, Minnesota at a regular meeting thereof held this 17th day of NOVEMBER, 2015, and said plat is in compliance with the provisions of Minnesota Statutes, Section 505.03, Subd. 2.

CITY COUNCIL, CITY OF ANDOVER, MINNESOTA

By: *[Signature]* Mayor

By: *[Signature]* Clerk

ANOKA COUNTY SURVEYOR

I hereby certify that in accordance with Minnesota Statutes, Section 505.021, Subd. 11, this plat has been reviewed and approved this 31st day of MAY, 2016.

[Signature]

Larry D. Hoiuh
Anoka County Surveyor

ANOKA COUNTY AUDITOR/TREASURER

Pursuant to Minnesota Statutes, Section 505.021, Subd. 9, taxes payable in the year 2016 on the land hereinbefore described have been paid. Also, pursuant to Minnesota Statutes, Section 272.12, there are no delinquent taxes and transfer entered this 31st day of May, 2016.

[Signature]
Jonell M. Sawyer

Property tax Administrator

By: *[Signature]* Deputy

ANOKA COUNTY RECORDER/REGISTRAR OF TITLES

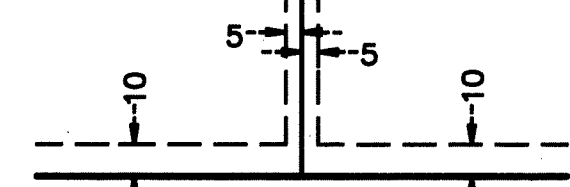
I hereby certify that this plat of HICKORY MEADOWS 2ND ADDITION was filed in the office of the County Recorder/Registrar of Titles for public record on this 31st day of May, 2016, at 1:07 o'clock P.M. and was duly recorded in Book 79, Page 10, as Document Number 2138440.001 of Abst.

[Signature]
Jonell M. Sawyer

County Recorder/Registrar of Titles

By: *[Signature]* Deputy

Drainage and Utility Easements are shown thus:



Being 5 feet in width and adjoining lot lines, unless otherwise shown, and 10 feet in width and adjoining street lines unless otherwise shown on the plat.

Wetland delineated by Kjolhaug Environmental in December, 2004 and July, 2005.



Scale in Feet
Scale: 1 Inch = 60 Feet

● Denotes 1/2 inch by 14 inch iron pipe monument found and marked as shown.

○ Denotes 1/2 inch by 14 inch iron pipe monument set and marked by License Number 48176.

For the purposes of this plat, the West line of Outlot A, HICKORY MEADOWS is assumed to bear N 00°19'35" E.

\$56.00

LANDFORM
From Site to Finish